

## SACRAMENTO LEADS COUNTRY IN CASH SPENT ON SCHOOLS

WASHINGTON, Feb. 27.—Seventy-nine American cities having an estimated population between 50,000 and 100,000 in 1922 spent \$91,344,000 for educational purposes other than libraries in that year. Census bureau statistics issued today show 44 of the 79 cities spent more than \$1,000,000 each and that four of them spent more than \$2,000,000 each. The average per capita expenditure for teachers' salaries and other expenses of maintenance and operation, exclusive of costs of outlays and permanent improvements, amounted to \$12.77 for 1922, as compared with \$5.55 in 1917.

Sacramento had the largest total expenditure with \$2,959,000, of which \$1,770,000 was for permanent improvements. Canton, Ohio, spent \$2,194,000, including \$1,072,000 for improvements; Schenectady \$2,174,000 including \$929,000 for improvements; and Hoboken, N. J., \$2,111,000, including \$1,031,000 for improvements.

Waterbury led in expenditures for teachers' salaries and other expenses of operation and maintenance exclusive of permanent improvement outlays, with \$1,525,000. Oklahoma City was second with \$1,479,000 and Tulsa third with \$1,280,000.

Other cities, which spent more than \$1,000,000 for that purpose were:

Jacksonville, Fla., \$1,682,000; San Diego, \$1,374,000; Bayonne, \$1,271,000; Wichita \$1,087,000; Sioux City \$1,188,000; South Bend \$1,038,000; Rockford \$1,010,000; Terre Haute \$1,045,000; Berkeley \$1,148,000; Fresno \$1,146,000, and Pasadena, \$1,123,000.

## Pimples

BLOOD impurities are pumped by the heart into the face. That is what causes that grainy appearance, that muddiness, sallowness, pimples, blackheads, acne, red spots, and that impossible "something" which no face cream, massage, or face powder can cover up or beautify! The foundation for a beautiful skin simply is not there, and no face treatment can give it to you. But increase your red-blood-cells, and quickly the ruby tint of purity begins to glow in the cheeks, the complexion becomes Venus-like and immaculate! Try it. It will do it every time. S.S.S. builds the red-blood-cells you need for a beautiful complexion. Begin using S.S.S. at once, and give yourself what you have been working for, for years.

S.S.S. is sold at all good drug stores in two sizes. The larger size is more economical.

**S.S.S. The World's Best Blood Medicine**

## ANOTHER PEACE PLAN OFFERED PRIZE \$25,000

CHICAGO, Feb. 27.—A \$25,000 peace plan competition for the "best educational plan to provide world peace and international justice," was announced today by Augustus O. Thomas, president of the world federation of educational associations, which will make the award.

The prize was contributed by "an interested patron of world peace who wishes his name withheld," Dr. Thomas said. The competition will be world wide and the decision of the fifteen judges who constitute the committee of award will be final. The winning plan will not be submitted to a committee of any kind.

Henry M. Robinson, a member of the American group of the international commission examining German finances, is chairman of the committee of awards.

The winning plan, which must be stated in less than 5000 words and submitted before July 1, 1924, may be of any form purely educational in character, Dr. Thomas explained. "It must be strictly non-political and must be practical," he said.

## The Screen

"Flaming Youth" Wins  
"Flaming Youth" is making one of the biggest hits of the year at the Rialto theatre.

It treats of the laxity of the present day girl in her observance of the conventions, and while in no way a preachment, it points to the dangers that beset the pleasure-loving girl who is likely to be just a trifle indiscreet in her pursuit of happiness.

Replete with highly dramatic situations, it tells, nevertheless, a charming, romantic story.

The role of Patricia Pentris is an ideal one for Colleen Moore. Other parts are in the capable hands of Milton Sills, Elliott Dexter, Myrtle Stedman, Sylvia Breamer, Betty Francisco, Phillips Smalley, Walter McGrail and Ben Lyon.

"The Covered Wagon"  
Declared to eclipse all previous productions of its kind, and acclaimed by the country's leading motion picture critics, "The Covered Wagon" will be revealed for the first time at the Rialto theatre, matinee and night, Friday and Saturday, Feb. 23, March 1st.

The story of "The Covered Wagon" based on Emerson Hough's novel, is typically American in both theme and treatment. The heroic adventures of the sturdy pioneers, when the assembled wagon trains set out from Westport for the uncharted wilderness 2000 miles away are vividly portrayed.

It is a drama of the men and women who defied all hardships in their efforts to settle and build up a mighty empire. It is likewise a story of the love of the true hearted Mollie Wingate and Will Baulson, portrayed by Lois Wilson and J. Warren Kerrigan.

## Y. M. C. A. TEAMS WORKING HARD IN ASHLAND DRIVE

ASHLAND, Feb. 27.—The Y. M. C. A. teams have been working hard for the past few days in order to raise the required amount of funds which are needed to carry out the recently established Pioneer club and the Hi-Y association of the high school. These clubs have just been established, however the Hi-Y club was started in the high school last year, but has not been able to continue the work this year until recently, due to the lack of funds which are now being provided by kind hearted citizens and people interested in the Christian work of the young people of the community. The Pioneer club is for boys from the age of 12 to 15, which is principally the Junior High boys. The Hi-Y takes in the older boys from the age of 15 to 19, and consisting mostly of high school boys. Both of the organizations have a large membership and although the Pioneer club is quite a new organization much interest is being taken in the work and much benefit has been derived from the club. Mr. Rush Henry, mathematics teacher and assistant coach in the high school has been hired to help the boys and coach them along the necessary lines. He also will have charge of a four weeks' encampment which will be held at some place not far from here, and where the boys will experience some real camp life and derive the benefits of a vacation, while at the same time get some idea of working outdoors. Basketball teams have been established among the different Sunday school classes and the different churches play games, trying out for the championship among the churches.

Mr. Henry giving three evenings a week from 4 to 6 and from 7 to 9 and a half day on Saturday. This time is spent in coaching the boys and in instructing them along general lines. The Pioneer hall is being used for the meeting at the present time, and the hall has been improved to make a suitable meeting place. The quota of \$600 has been partly raised and it is hoped that the remaining amount will be raised during the next few days.

Mrs. M. W. Wheeler and Miss Bertha Borall spent Tuesday in Grants Pass on business. Miss Borall is a clerk in McGee's dry goods store.

Miss Helen Sanford was a guest of the Kappa Alpha Sigma while attending the conference at Corvallis last week. Miss Katherine Pratt visited her sister, Miss Frances Pratt, while at Corvallis.

Mr. Charles W. Gilbert of Marshall Wells company was in Ashland Tuesday on business.

Detailed reports of the conference held at Corvallis last week were made by the official delegates in the high school assembly Tuesday afternoon. The delegates were Miss Isabelle Silver, Miss Esther Counter, Mr. Raymond Carson, Mr. John Galey and the Misses Eve and Minnie Poley. Only Miss Minnie Poley, Miss Silver and Miss Counter gave the report Tuesday. The others will be given Wednesday or Thursday. Miss Silver told about the banquet given for the official delegates in the new tea room run by the Home Economic girls there, and Miss Counter told of the general impression which she received from the conference. Miss Poley told about the convocation, which was held at one o'clock Saturday. This is usually held at one o'clock Wednesday, but on account of the delegates a special one was held on Saturday. This was one of the most impressive things on the trip, and Miss Poley urged that a similar plan be carried out in the high school when some speaker addresses the school. At the beginning of the convocation, invocation is given and then music is furnished by one of the bands there. The college songs are played and short talks are given by the different members of the faculty, followed by the main address of the day. This is one of the few times when all of the students get together.

Henry Schaeffer of the Kings Highway was in Ashland Tuesday attending to business interests in this city.

Mr. J. E. Jones of Ashland recently returned from an extended trip in Culver and other points in California.

Mr. Roy Robley and family were visiting in Ashland a few days ago. Mr. Robley is connected with the General Electric plant in New York and is now returning to his home and work in Portland. Mr. Robley was a former Ashland resident and a graduate of A. H. S.

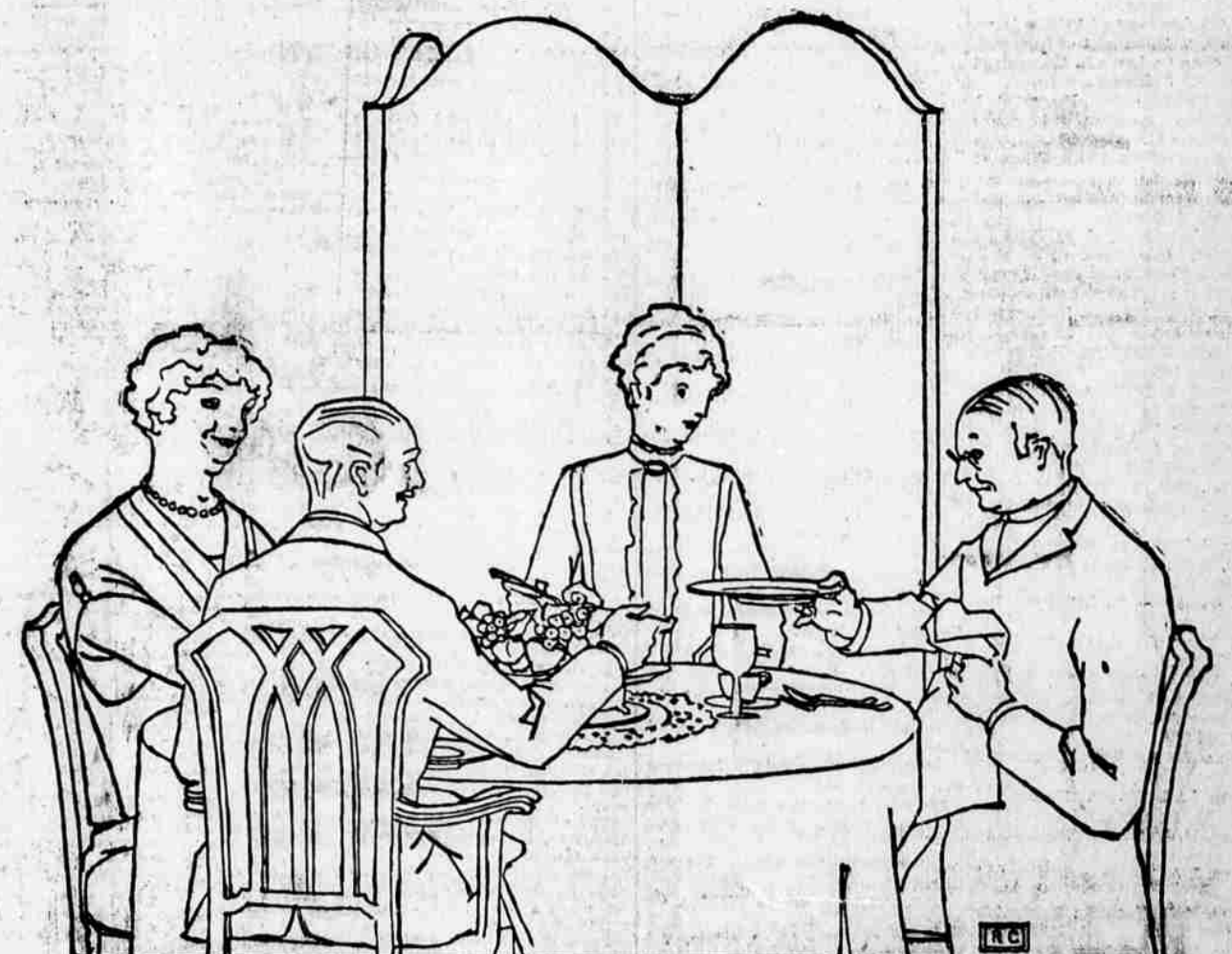
The post office has recently secured additional help, due to the increased work and the large amount of mail. Carriers and clerks have been added. This is the first time that any help has been added in fourteen years. The receipts of the office have more than doubled since the installation of the carrier service fourteen years ago. The volume of work has enlarged accordingly.

Mrs. Frank Dillard returned recently from Portland where she was called to the bedside of her father.

Mrs. Jack Kimball of Klamath Falls was a guest of Miss Blanche Hicks during the week. She is well known here, and is a daughter of Judge Watson.

WASHINGTON, Feb. 26.—Western senators have been informed by President Coolidge that the federal government stands ready to assist any banks in the northwest in need of aid because of the acute agricultural situation, provided local conditions warrant.

# for Making PIE CRUST



Pie Crust so good that  
sceptics who "can't eat pie"  
ask for a second piece

# Snowdrift

SNOWDRIFT—a pure, rich, creamy cooking fat—is made by the Wesson Oil people out of oil as good as a fine salad oil. (You need oil that's good to eat to make cooking fat as good as cooking fat can be.) Then Snowdrift is packed in a truly air-tight bucket (air-tight—but as easy to open as winding the clock) to keep it as sweet and fresh as the day it was made—sweet and fresh all the way down to the bottom of the bucket.

Using Snowdrift in your own favorite recipe is the best way to find out how good Snowdrift is. Remember to add salt because Snowdrift is sweet, fresh, and unsalted.

KATE BREW VAUGHN'S recipe for PIE CRUST  
1 1/2 cups flour  
1/2 cupful Snowdrift  
Ice water sufficient to make a dough  
1/2 teaspoonful salt  
Cup the Snowdrift into the flour with silver knives and add ice water to make a dough. Roll the dough out.  
Dot over with Snowdrift, fold several times, and roll out again. Line pans and cover with the same. Crust for pie should be about a quarter inch thick and rolled larger than pans to allow for shrinkage. Perforate top crusts to allow steam to escape.  
All Measurements are Level

## Concrete Roads Are Built to Ride On— Not to Slide On

When you come to a stretch of Concrete road you feel your car "take hold" on the firm, even surface.

You notice the sure, swift action of the brakes even in wet weather—how easy it is to steer.

You make your own comparisons with other road surfaces.

Then you realize why Concrete hard-surfaced roads are being built everywhere in response to motorists' needs.

One of the purposes of the Portland Cement Association is to enable everyone—whether he uses Concrete or has it used for him—to get the greatest value for his money.

We have a personal service to offer individuals and communities.

Let us know definitely what help you need. There is no obligation.

Our booklet R-3 tells many interesting facts about Concrete roads. Ask us for your copy

**PORTLAND CEMENT ASSOCIATION**  
Gasco Building  
PORTLAND, OREG.

A National Organization  
to Improve and Extend the Uses of Concrete  
Offices in 27 Other Cities

**WHITE TRUCKS**  
ED F. WEBBER  
LOCAL REPRESENTATIVE  
Office at Medford Service Station  
Phone 14

Try Mt. Pitt Flour \$1.65  
Marvel Loaf ..... \$1.50  
**MORTON MILLS**  
CENTRAL POINT

**Davidson News Co.**  
New Palm Block  
Cor. Fir and Main  
Magazines  
Newspaper Agencies  
Subscriptions  
Distributors to the Trade  
Phone 585  
Confectionary Smokes

**INCOME TAX SERVICE**  
Furnished on State and Federal  
Personal Returns Corporation Reports  
Partnership Returns Corporation Records  
Corporation Returns  
Compilation of your records for these reports, and Counsel in all  
Income Tax Matters  
**GEO. G. HEWITT**  
Income Tax Adviser  
804 and 305 Medford National Bank Bldg  
Telephone 325