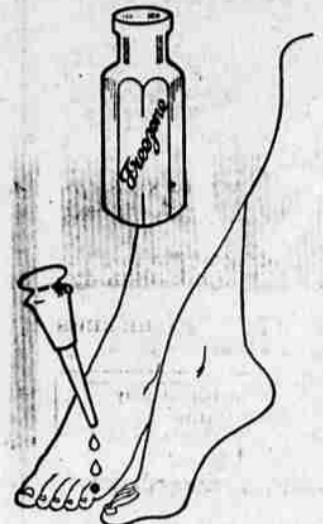


CORNS

Lift Off with Fingers



Doesn't hurt a bit! Drop a little "Freezone" on an aching corn, instantly that corn stops hurting, then shortly you lift it right off with fingers. Truly! Your druggist sells a tiny bottle of "Freezone" for a few cents, sufficient to remove every hard corn, soft corn, or corn between the toes, and the calluses, without soreness or irritation.

DANCE

McElroy's Orchestra
Fair Grounds

TONIGHT

May 10
8:30

Mother's Day

Sunday, May 13

An appropriate gift is a box of our candy with a handsome Mothers' Day Motto.

Call in and see them.

The Shasta



REBORING that is done with exact precision and correct equipment remedies perfectly the scores in cylinders.

OUR REBORING is the work of trained machinists and our equipment is of the best.

Moderate charges.

Offutt Machine Shop
36-40 No. Front. Phone 119



YOUR CAR To perform right, to stand up to abuse, should be equipped right—supplied with Quality lubricants, cared for as any other piece of machinery.

The Auto Supply Co.
31 N. Bartlett. Doc Wright
"Flashes of Action," Bialto Theatre, May 7 to 8.

B. E. HARDER IS ELECTED PRES. C. OF COMMERCE

B. E. Harder was elected president of the Medford Chamber of Commerce at a meeting of the board of directors held last evening. C. A. Knight was elected vice-president and Floyd Hart treasurer. H. O. Probst was re-elected secretary.

A greater part of the meeting was devoted to organizing the year's work and in advising the newly elected directors of policies of the former board and actions taken on incomplete projects of the organization.

The president was authorized to appoint a committee on committees, and committees on forum, budget, auditing and membership.

The financial statement showed a cash balance on May 1st of \$1,164.86 and \$1,000.00 in the publicity sinking fund.

Recommendations for additional office equipment, repairs on the building owned by the chamber, transfer of cash to the publicity sinking fund and the employment of extra clerical help were referred to the budget committee. This committee was instructed to make a careful study of the possible income of the chamber and then recommend to the board what obligations the board should assume this year.

The board unanimously voted to endorse the clean-up campaign of the city and each one of the seven hundred members of the chamber are to be asked to do his or her share in making this project a success.

Preliminary steps were taken toward advertising the community and it was ordered that a request be filed with E. A. McCormick, vice-president of the Southern Pacific company which when granted will materially assist Medford in getting the right kind of publicity.

The directors now in charge of the chamber are B. E. Harder, C. A. Knight, V. H. Vawter, H. L. Walther, Bert Anderson, A. L. Hill, Ed. M. White, Alex Sparrow, John R. Tomlin, Emil Mohr, J. W. Wakefield, Volney Dixon, Harry Rosenberg and J. N. Brownlee.

SALVATION ARMY CAMPAIGN WILL START ON MONDAY

The endorsement of the Elks, the American Legion and the chamber of commerce is given to the Annual Home Service campaign of the local Salvation Army organization.

Ernest L. Graves, state director for the Salvation Army campaigns throughout the state will be in the city Friday to complete preliminary arrangements for the launching of the Salvation Army Home Service campaign Monday morning, May 14th. The goal to be reached is \$3,000, this being the amount necessary to maintain the work here in Jackson county as well as to contribute to the oversight of the work in Oregon, and to provide a relief fund for the needy.

Valuation of relief work done by the Salvation Army here in the past 12 months is about \$812.

In his statement, Mr. Graves says it is the desire of the officers of the Salvation Army to eliminate the old fashioned method of supporting the organization, namely the promiscuous solicitation of funds in the pool rooms and various places of business by means of the tambourine.

Mr. Graves has just returned from Des Chutes county where they succeeded in raising \$3300, their quota being \$3000. And taking into consideration the number of friends that the Salvation Army has in Jackson county both Mr. Graves and the officers in charge of the local work believe that with the hearty cooperation of every citizen their quota will be raised here.

It is the sincere hope of the campaign director, Captain and Mrs. C. Ford, local officers in charge, that all will respond heartily to this very worthy call; it being understood that if the quota is reached there will be no more appeals for the coming 12 months, outside of the Christmas kettles, and it is admitted that it would hardly seem like Christmas without them.

Statistical Report of Work Done in Medford Last Twelve Months
Senior Work—Open air held, 260 open air attendance, 10,000; indoor meetings, 261; indoor attendance, 5000; conversions, 80; number of hours of visitation, 520.

Junior Work—Meetings held, 100; attendance, 2052; conversions, 50.
Relief Work
Number of persons given meals, 78; number of persons given lodging, 150; number of persons given groceries, 400; number of persons given Christmas dinner, 250; number of persons given garments and shoes, 255. Total number of persons helped, 1155. Total value of relief given, \$812.

CAPTAIN AND MRS. C. FORD,
Officers in Charge.

BUSINESS MEN URGED TO AID U. S. RAILROADS

NEW YORK, May 10.—An appeal to American business men to help railway owners and employes put the nation's transportation system back on its feet was uttered before the chamber of commerce of the United States today by W. N. Doak, vice-president of the brotherhood of railway trainmen.

Railroad labor does not favor federal ownership, control or operation of the lines, Mr. Doak asserted. It is interested in seeing them successfully operated by private owners and run on a sound financial basis.

Walter W. Head of Omaha, Neb., first vice-president of the American Bankers' association, assured the chamber that the financial credit of American roads would be re-established by continued increasing efficiency of management and continued stability of regulation by the government and public opinion. Investors had every reason to feel encouraged by the upward tendency of earnings.

Mr. Head opposed both government ownership and withdrawal of the government from regulation of rates or wages. He advocated reasonable consolidation of rail systems, gradual reconstruction of freight schedules and the adjudication of labor controversies by the inter-state commerce commission "in order that one body may have jurisdiction over railroad income and expense."

GERMANS APPEAL FROM SENTENCES

DUESSELDORF, May 10.—(By the Associated Press)—An appeal from the sentences returned against Baron Krupp von Bohlen and the directors of the Krupp works by a French court martial at Werden yesterday, has been filed by the attorneys for the defense. Baron Krupp and the other defendants were placed in the French military prison here today; pending the decision of the upper military tribunal.

LONDON, May 10.—(By the Associated Press)—The British reply to the German reparations proposals probably will go forward tomorrow. The note will be a terse, energetic document, and while not so sweeping as the French reply, it will point out in unmistakable terms the utter unacceptability of Chancellor Cuno's proposals and the imperative need for a more substantial and workable formula for the solution of a problem which affects the economic life of all Europe.

PROHI EXPENSE FOR 2 MONTHS \$1570

Prohibition enforcement in Jackson county for the months of March and April cost \$1570.49, divided \$823.16 for April, and \$747.33 for March, according to figures given by the county clerk's office.

The April bills allowed were as follows: J. H. Leggett, \$153.51; S. B. Sandefer, \$572.22; Bert M. Sullivan, \$10; Bert Moses, \$6; incidental expense, \$5.50. A bill for \$3.05 was disallowed.

The March expenses were divided as follows:
J. H. Leggett, \$180; Frank Houston, \$65; S. B. Sandefer \$412.92; S. B. Sandefer, \$75; Standard Oil, \$90.24.

NATIONAL GUARD TO EAT OWN MULLIGAN

Some of the members of Company A, National Guard, having strenuously declared their ability to make the best kind of mulligan that can be made, it is being decided to give them an opportunity to test out it's effect upon their fellow members of the National Guard this week and a part of the company are willing to risk their future happiness on the strength of this guarantee and allow these men to feed them at the new range at Jacksonville over the week end.

A portion of Company A will leave for their range at 6 o'clock Saturday evening, May 12th, for an outing and some field instructions. Every man will go with pack and field equipment complete.

President Cancels Speech.
WASHINGTON, May 10.—President Harding today notified those in charge of arrangements for the memorial meeting tonight at New York for General and Mrs. Ballington Booth of the Volunteers of America, that he would be unable to accept their invitation to address the gathering.

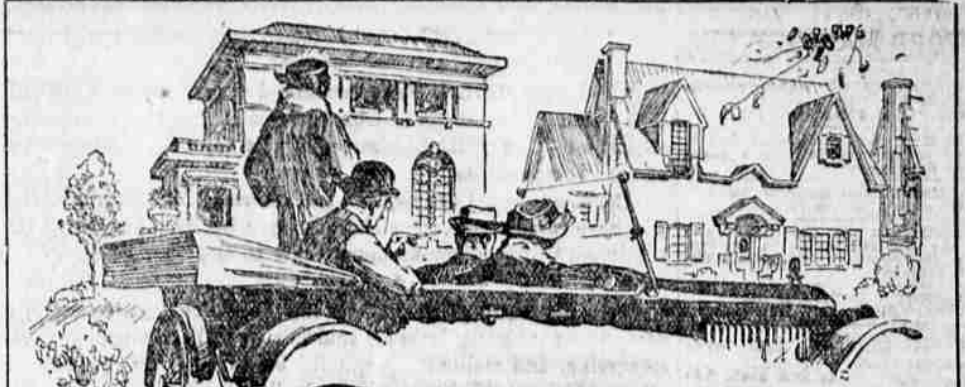
Steel Orders Decline.
NEW YORK, May 10.—Unfilled orders of the United States Steel corporation of April 30, made public today, totalled 7,288,509 tons, a decrease of 114,822 tons under those at the end of the preceding month.

EXQUISITE COMEDY PAGE MONDAY NIGHT

Arthur Richman's exquisite comedy "The Awful Truth," is the brilliant vehicle bringing to us the most welcome of our younger players, none other than Ina Claire, so happily recalled as the sparkling luminary of "Polly With a Past," "The Gold Diggers," and the revue environment of the "Follies." Miss Claire will be seen at the Page theatre Monday evening, May 14th.

Miss Claire has one of the roles in which her host of admirers like best to see her. She is a smart, beautiful and fashionable divorcee, on the brink of a second matrimonial adventure, brought about by financial necessity, when a most interesting and unusual chain of circumstances, involving her attractive former husband, interrupts her plans. The outcome is at once extremely amusing and unexpected.

Miss Claire is surrounded with a most capable and distinguished supporting company, headed by Bruce McKee, who has met with an individual success of no small proportions. Surrounding roles are portrayed by such well-known players as Cora Witherspoon, Louise Mackintosh, Kyra Alanova, Paul Harvey, Raymond Walburn, Arthur W. Metcalfe and Lewis Sealy. Of important interest is the fact that Mr. Richman's comedy has been produced under the personal direction of Henry Miller, and the production accorded the play by Charles Frohman company is one characteristic of all Frohman presentations, marked by excellent good taste and painstaking attention to each detail.



The Show Place on your block

IS YOUR HOME COMFORTABLE, restful—and painted to harmonize with the landscape? Do motorists point out your house to visitors? Or do women exclaim over its charming appearance?

If you would make your home the colorful and attractive place it should be, there are a number of Fuller products to help you. Pioneer Shingle Stain, for shingle roofs, with its subdued and unfading shades and its superior penetrative and preservative qualities that retard decay. Or Concrete, a damp-proof coating for concrete or brick. Or Fuller's Pure Prepared Paint and Phoenix Pure Paint—unsurpassed for covering and wearing qualities which in the end will make them less expensive than paints which cost a trifle less per gallon. The reputation—74 years old—of Fuller paints and varnishes assures you satisfaction.

Whatever your painting need, W. P. Fuller & Co. makes a paint for the purpose. Get an estimate today from a master painter. Write our Service Department for advice and for a copy of our "Home Service" booklet. No obligation.

W. P. FULLER & CO.
301 Mission Street, San Francisco

22 Branches in Pacific Coast Cities - Factories: San Francisco and Los Angeles



FULLER PAINTS VARNISHES

The following firms carry Fuller Paints and Varnishes
W. B. THOMPSON, Medford, Oregon

THE STUDEBAKER LIGHT-SIX SEDAN \$1550

—But You Can't Ride on the Paint!

Imitation diamonds can be made to look so real and sparkle so brightly that it is difficult to tell them from the genuine.

But try to sell one and you will find out its real worth in a flash.

Same with automobiles. Weaknesses of construction in a closed car can be hidden, for a time, with paint and varnish and fancy fittings. But all is not quality that glitters.

You can't ride on the paint. And when you place such a car in the second hand market, you suffer a heavy depreciation because it lacked real intrinsic value at the outset. Use will never improve a mediocre product.

The second hand floor is the melting pot for automobile values. Cars are stripped of artificial values and only inherent worth counts.

Motor car owners tell us that the trade-in value of any Studebaker car at the end of three or four or five years of useful life is greater than on any other car built today—the percentage of depreciation is the lowest.

No wonder the Studebaker Light-Six Sedan is the fastest selling quality Sedan in the world!

The name Studebaker stands for quality, durability, comfort and integrity.

Four wide-opening doors. Eight-day clock. Quick-action cow ventilator. Attractive coach lamps. Heater. Mohair velvet plush upholstery. Glass-proof dash and windshield cleaner. Dome light. Thief-proof transmission lock.

HITSON MOTORS
36-40 So. Fir St., Medford

MODELS AND PRICES—f. o. b. factory			
LIGHT SIX	SPECIAL SIX	BIG SIX	
3-Door, 117 W. S., 40 H. P.	4-Door, 117 W. S., 40 H. P.	4-Door, 137 W. S., 40 H. P.	
Touring, \$975	Touring, \$1175	Touring, \$1750	
Roadster (3-Door), 975	Roadster (3-Door), 1250	Speedster (3-Door), 1655	
Coupe-Roadster (3-Door), 1125	Coupe (3-Door), 1975	Coupe (5-Door), 2150	
Sedan, 1150	Sedan, 2050	Sedan, 2750	

Terms to Meet Your Convenience

THIS IS A STUDEBAKER YEAR