

BOXES NOW READY FOR THE VALLEY APPLE EXPOSITION

The single layer boxes for the Rogue River Apple Exposition can now be obtained by the growers at the Medford Chamber of Commerce.

There are just three classes under which apples may be entered in the exposition. These are plate displays of five apples each, one box and three box entries.

Growers who have not received a premium list may get the same from the Medford Chamber of Commerce. There is no fee charged to make entries, nor will there be an entrance charge to the display.

WORK ON FAIR GROUNDS TRACKS THIS WEEK

Work will be commenced this week on building the auto speedway, race track, driveways and leveling the grounds for the Jackson County Fair grounds.

NEGRO CONFESSES TO MURDER OF N. J. CHILD

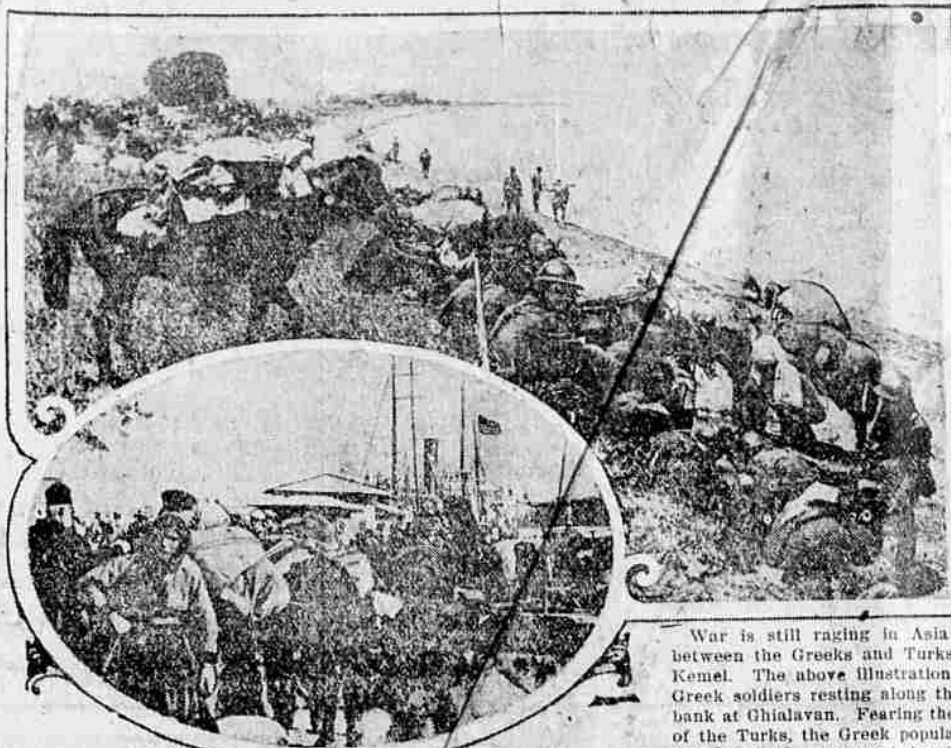
VINELAND, N. J., Oct. 19.—Louis Lively, the negro accused of killing a little girl at East Moorestown, N. J., last spring, was arrested here early today after shooting a policeman.

Sure Relief BELLANS FOR INDIGESTION



6 BELLANS Hot water Sure Relief FOR INDIGESTION

Evacuation of Nicomedia by the Greek Residents



War is still raging in Asia Minor between the Greeks and Turks under Kemal. The above illustration shows Greek soldiers resting along the river bank at Ghialavan.

MAIL TRIBUNE G. A. HUNT CO. FREE MATINEE

The trial of Buddy Apperson for burglary is one of the dramatic events of "Bill Apperson's Boy," which will be seen at the Page theatre, with Jack Pickford in the title role, Saturday at 10:30 a. m.

In this feature, which First National is distributing, Mr. Pickford, in the part of a youth of the Blue Ridge mountains, is accused of entering the home of a girl with whom he is in love, late at night.

The courtroom is crowded with picturesque types from the mountaineer community as the trial begins. Buddy Apperson is freed through the testimony of the girl.

HINTS ON CARE OF SPARE TIRES

Extra tires, not in use on the car, should be kept in a cool, dark place, free from extremes of either heat or cold cause an injurious chemical action in the

rubber, resulting in its premature deterioration. It is well to further protect extra tires by wrapping them with a strip of cloth.

The latest Savage Tire service bulletin, from which the above is taken, advises that the casing carried as a spare should not be brand-new but rather a tire that has been used somewhat.

This Savage bulletin also gives some pointers on the care of spare inner tubes. They should be kept either in a special container, such as can be purchased at any supply store, or else carried in the original box.

There are but three classes under which apples are entered for competition being that of a plate of five, one box and three boxes. First, second and third prizes are offered on twenty-two varieties of apples on plates.

EX-KING LUDWIG OF BAVARIA IS DEAD

LONDON, Oct. 19.—Ludwig III, former king of Bavaria, whose throne crumbled when the German armies were defeated and former Emperor William fled from Germany, died yesterday at Sarvar castle, in Hungary. His death closed a most picturesque and colorful career.

APPLE ENTRIES TO CLOSE OCTOBER 27 FOR EXPOSITION

One week from today, October 27, is the time set when all entries must be made for the Rogue River Valley Apple exposition, therefore there are but a few days left for the growers to get exhibits ready.

More than \$100 in cash premiums are offered and an equal amount in merchandise and these are so apportioned as to give every grower a chance to secure an award.

Growers are not expected to enter commercial sized boxes, but the awards will be made on quarter boxes which may be obtained at the office of the Medford chamber of commerce. These are now ready for distribution.

All entries must be made on October 27, as the judging will be done on the 28th and the exposition will be open to the general public on Saturday, Oct. 29.

ADVERTISING OF S. OREGON FIRST WORK NEW BODY

A movement which promises large and constantly increasing benefits to Southern Oregon, was successfully launched in Ashland Tuesday through the organization of the Consolidated Chamber of Commerce of southern Oregon.

The plan is simple and through its very simplicity spells success. The members of the organization are the local chambers of commerce of the cities of Ashland, Grants Pass, Klamath Falls and Medford.

Similar efforts toward uniting these four bustling cities of southern Oregon, said Mr. Sheldon, have failed because either the joint organization has tackled too varied a line of projects, some of which did not interest the local communities, or it has run off on an effort which particularly concerned one of the cities and not all southern Oregon as a whole.

It was apparent from the discussions at the organization meeting yesterday morning and the luncheon at the Oregon Hotel at noon, that the advertising of all Southern Oregon as a tourist attracting district, would probably be the first consideration to receive attention. It was forcefully pointed out that by far too many of the tourists who came into Southern Oregon came for the purpose of seeing just one thing and left after a brief visit to that point, also that tourists would come from a distance to visit a series of attractions which would not come for one only.

led their delegates: T. L. Stanley, Klamath Falls; John H. Fuller, Ashland; H. O. Probach, Medford, and Lynn Sablin, Grants Pass.

Little Wonders, Madam—

that you can work yourself with paint, varnish or enamel

WE have established a service for women and men who want to do small jobs of interior painting, varnishing or refinishing of furniture, floors, bath rooms, walls, bric-a-brac, basketry, brackets, etc.

It's a free service. You simply tell us what you have to refinish, how finished now and what effect you want to get.

We tell you how to do it—in detail. What kind of material to use. What kind of brush. What method. Where to buy.

You can work transformation in home things that will surprise you. Old bedsteads, tables, chairs, floors, bath tubs, etc., are old really only on the surface. Paint, varnish or enamel them and they're new!

We make a special line of paints, varnishes, etc., for just this kind of work—Fuller's "Home Service" Paint products—for you to use.

They dry perfectly, spread easily and smoothly, and give every desired result. You'll be surprised to learn what you can do, once you've used them.

Our experience with paints and painting practice goes back more than 72 years. We are one of the country's largest manufacturers.

Follow Fuller's "Home Service" Specifications, and you'll get the exact effects you're looking for.

Don't think you can't because you haven't done this kind of work before. Let Fuller products and Fuller service show you that you can.

Where to Buy

Important that you get the right material so be sure to go to the right store for Fuller products. Cut out coupon below as a memo to direct you.

Write us now—a post card—for complete catalog of Fuller's Specification "Home Service" Paint Products, which tells just what to buy for the work you have in mind. Send full description of, and get our free advice on refinishing furniture, chairs, floors, bric-a-brac, brackets, basketry, etc.

Fuller's SPECIFICATION "Home Service" Paints Varnishes-Enamels

M'd. by W. P. Fuller & Co. Dept. 18, San Francisco Pioneer Paint Manufacturers for 72 Years Established 1849

For all Exterior Jobs of Painting it is advisable to Secure the Services of a Master Painter.

Fifteen-for-Floors

Fifteen-for-Floors is Fuller's Specification for a durable, beautiful floor varnish of the finest type. Not injured by boiling water, rolling furniture or very hard wear.

SAVE THIS

(Cut this out and put it in your pocket-book or handbag as a memo.) Fuller's "Home Service" Paint Products are sold by the following in your city:

THOMPSON THE PAINTER

126 N. Front St. Phone 464

Land Plaster \$19 per ton

This is the Highest Quality Plaster Obtainable

in Ton Lots

Get your Land Plaster applied before rains set in—

We'll Save You Money on Your Fertilizers

Place Your Orders Now

Monarch Seed & Feed Co.

317 E. Main "THE FARMERS' SERVICE STATION" Phone 260

Heat Your Bungalow, Cottage, or Flat with Hot Water

Cellar not necessary—put in any small house without disturbing present heating arrangements, until ready to use—



IDEAL-Arcola Radiator-Boiler

The Arcola is placed in living room, parlor, or kitchen and fired as a stove. It heats the room and also sends its excess heat by hot water system to American Radiators in adjoining rooms. The simplest, most durable, most economical heating plant ever devised for small buildings. Don't delay to find out all about it.



Modern Plumbing and Heating Co.

Phone 628

MEDFORD-ROSEBURG AUTO STAGE

Leaves Medford 11:00 a. m. daily. Leaves Roseburg 1:00 p. m. daily

MEDFORD-GRANTS PASS STAGES

Leave Medford—8:00 a. m., 11:00 a. m., 1:00 p. m., 4:30 p. m. Leave Grants Pass—10:00 a. m., 1:00 p. m., 4:00 p. m., 6:15 p. m.

Cars stop at all intermediate points.

Waiting room, Medford, 5 S. Front. Phone 309

INTERURBAN AUTOCAR CO.



Prince Albert's a new note in the joys of rolling 'em!

Talking about rolling your own cigarettes, we'll tell you right here that Prince Albert tobacco has 'em all lashed to the mast!

You've got a handful of happiness coming your direction when you pal it with P. A. and the makin's papers! For Prince Albert is not only delightful to your taste and pleasing in its refreshing aroma, but our exclusive patented process frees it from bite and parch!

And, for a fact, rolling up Prince Albert is mighty easy! P. A. is crimp cut and stays put and you whisk it into shape before you can count three! And, the next instant you're puffing away to beat the band!

Prince Albert is so good that it has led four men to smoke jimmy pipes where one was smoked before! It's the greatest old buddy-smoke that ever found its way into a pipe or cigarette!

Prince Albert is sold in toppy red tins, tippy red tins, handsome pound and half pound tin humidors and in the round crystal glass humidors with sponge moisture top.



Copyright 1921 by H. J. Reynolds Tobacco Co. Winston-Salem, N. C.

PRINCE ALBERT

the national joy smoke

The Screen

Anita Stewart at Page.

"Sowing the Wind," which has Anita Stewart as its charming star, opened an engagement at the Page theatre yesterday and was received with unmistakable approval by a large audience. It can be classified as one of the really good pictures of the current season. Miss Stewart, by a finished performance in her portrayal of the character of a beautifully innocent girl whose mother is a "queen" of revelers in a notorious gambling house, commands hearty sympathy. She registers the changing emotions of a girl in such a predicament with fine shading and no one can go away from the theatre without taking the feeling that it makes no difference what obstacles an evil fate may place in the way of a human being, there can come happiness ultimately.

The cast supporting Miss Stewart is far above the average. Ralph Lewis Myrtle Stedman, James Morrison and William V. Moak all handle important roles most acceptably.

"The Old Nest," Rialto A story full of the same sort of appeal that made "Humoresque" so popular, but entirely different from the latter picture and in a technical way a better production, is "The Old Nest," now being featured at the Rialto.

Mary Alden in the role of the mother simply lives the part. Louise Lovely has a good role, and there are other well-known players, with a number of particularly well trained children.

"The Old Nest" is one of the films that the lovers of picture plays cannot afford to miss.

Airmen Offer Service

OMAHA, Neb., Oct. 19.—One hundred members of the Aero club of Omaha, through Earl W. Porter, its president, today offered Postmaster General Hays their services to help recruit 500 volunteer airplane flyers to carry the mails in the event the railroad strike makes it necessary.

WOMEN WHO OVERWORK

"Man may work from sun to sun, but woman's work is never done." In order to keep the home neat and attractive, the children well dressed and tidy, women continually overdo and suffer in silence, drifting along from bad to worse, knowing full well that they need help to overcome the pains and aches which daily make life a burden. Lydia E. Pinkham's Vegetable Compound is a medicine with specific value which overcomes many of the worst forms of female complaints as the letters constantly being published in this paper will prove.