

**REMEMBER** to ask your grocer for Calumet Baking Powder and be sure that you get it—the Indian head on the orange label. Then forget about bake day failures. For you will never have any. Calumet always produces the sweetest and most palatable foods. And now remember, you always use less than of most other brands because it possesses greater leavening strength.



Now Remember—Always Use

**CALUMET BAKING POWDER**

There is no waste. If a recipe calls for one egg—two cups of flour—half a cup of milk—that's all you use. You never have to re-bake. Contains only such ingredients as have been officially approved by U. S. Food Authorities, is the product of the largest, most modern and sanitary Baking Powder Factories in existence. Pound can of Calumet contains full 16 oz. Some baking powders come in 12 oz. instead of 16 oz. cans. Be sure you get a pound when you want it.

**Calumet Columbia Muffin**  
Recipe  
—4 cups sifted flour, 4 level teaspoons Calumet Baking Powder, 1 tablespoon sugar, 1 teaspoon salt, 2 eggs, 2 cups of sweet milk. Then mix in the regular way.



**"Paint Up"**

THIS IS GOOD PAINTING WEATHER

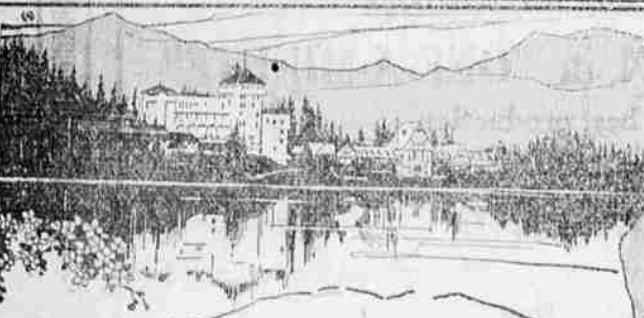
**Paint Up Now!**

Before doing this, see

**THOMPSON, The Painter**  
Dealer in Paints, Oils, Varnishes and Wall Paper

Forty years' practical experience at your service.

126 N. Front Phone 464



**SUMMER EXCURSION RATES**

To Eastern Points Thru

**CANADIAN PACIFIC ROCKIES**

TICKETS ON SALE JUNE 1ST TO AUGUST 15TH, INCLUSIVE

Limit three months from date of sale, with final return limit October 31st.

For full particulars write, telephone, or call at office

**CANADIAN PACIFIC RAILWAY**

E. E. Penn, Gen'l. Agt. Passgr. Dept. 55 Third St., Portland, Oregon.

**OFFICIAL REPORT  
MEDFORD SCHOOL  
FINANCES, 1921**

Due to the generous support of the taxpayers the trustees of School District No. 49 are able to submit a report showing the district to be in sound financial condition. While the receipts from the direct tax did not quite equal the amount voted, other receipts netted a greater revenue than estimated.

Special care was given to the taking and checking up of the school census, with the result as shown by the item marked "County School." Instruction was furnished in our high school to many pupils from other school districts having no high schools. This revenue is listed under "High School." Under "Tuition" is shown the revenue received from individuals attending our schools from other districts which by direct tax provided for instruction in their own schools. The state and federal government contributed to the support of our agricultural department under the provision of the Smith-Hughes act. The students of the manual training department have paid for material used in their various projects and the amount received is shown under the appropriate heading.

It was necessary to borrow money during the fall term when tax returns were light. These loans have all been repaid, including the loans carried over from the previous year. Repairs to buildings and grounds will require more money during the coming year, as fire escapes must be provided for two schools, worn out walks must be replaced and roofs retreated and painted.

The district has been paying interest on a bond debt of \$115,000. During the fiscal year just closed this obligation has been reduced to \$105,999. In order to retire the remainder on the bonds when due it will be necessary to lay aside at least \$10,000 each year in a sinking fund. In order to do this the maintaining of a policy of strict economy will be imperative.

The old high school building is entirely inadequate for present needs. It could be used to advantage as a junior high, thereby relieving the congestion in the Washington and Lincoln schools. This adjustment will not be possible of course until a new high school building can be provided.

The ball park has recently been acquired by the district and a suitable site for the new building is assured. It is hoped that the public will support this program and that future school boards will observe the strict economy necessary for its success.

Board of Directors School Dist. No. 49.  
JOSEPH O. GREY,  
Chairman Finance Committee.

June 29, 1921.

Financial statement School District No. 49, June 29, 1921, follows:

Direct tax	\$ 91,502.73
County school	17,268.30
State school	3,240.08
High school	19,243.29
State 2 mill tax	6,255.25
Tuition	1,062.20
State agricultural dept.	623.00
Manual training material	482.15
Interest on deposits	134.21
Borrowed money	42,500.00
Other sources	163.91
Cash on hand June 16, 1920	5,722.72
	\$182,903.55

Disbursements	
Teachers' salaries	\$ 87,863.84
Clerk's salary	500.00
Janitors' salaries	6,180.11
Election and census	206.32
Tuition	33.50
Text books	268.89
Library books	243.01
Teaching supplies	1,516.65
Janitors' supplies	716.16
Postage, stationery and printing	351.18
Science department	277.67
Manual training dept.	816.93
Home economics dept.	297.89
Agricultural dept.	470.21
Fuel	2,539.94
City water	600.90
Light and power	394.51
Telephone and telegraph	377.43
Equipment and repairs	999.30
Building repairs	1,224.72
Insurance	712.51
Rental of buildings	1,285.00
Interest to city and banks	759.32
Bond interest	5,843.00
Miscellaneous	1,455.44
Previous loans repaid	12,000.00
Current loans repaid	42,500.00
Payment on Ball Park	1,000.00
Bonds retired	19,090.00
Cash on hand June 29, 1921	1,311.63
	\$182,903.55

**An Advertisement Helped Her**  
Mrs. Lucille Mackey, 16 Buena Vista St., Washington, Pa., writes: "Last winter my 3-year-old girl caught a bad cold which left her with a dry cough. It bothered her most at night and she would cough until she vomited. I think she must have had whooping cough. I saw an advertisement for Foley's Honey and Tar. I tried it and bought two bottles and her cough left her before she finished the second bottle. She had gotten awfully thin, but now she is as fat as ever." Sold everywhere. Adv.

**To the Citizens of Medford**  
We are announcing our new Square Deal Wet Wash Laundry at 608 North Grape street, which will be in operation on or about July 1st. Our prices will suit your pocket book and we will treat you square.  
H. F. PECK, Manager.

**UNION OPEN AIR  
CHURCH MEETINGS  
TO BEGIN SUNDAY**

Beginning Sunday evening, July 3rd union Sunday evening services will be held in the park during the months of July and August. The churches which have planned this summer program are the Christian church, Rev. D. E. Millard, minister, the M. E. Church, Rev. J. R. Bassett, minister, the Main Street Methodist church, Rev. James E. Conder, minister, the Baptist church, Rev. F. E. Leach, minister, and the Presbyterian church, Rev. E. P. Lawrence, minister.

A platform will be erected near the band stand, just in the rear of the Carnegie library, and seats will be arranged for the joint congregations so that there will be as much comfort as possible. The place chosen will be away from the noise of the street and protected from the rays of the sun by the trees and will be an ideal spot for summer evening gatherings. Services will begin at 8 p. m. and will be in charge of the different ministers and their choirs, each taking their turn. Moving pictures will be used some evenings to add to the interest and helpfulness of the services. On July 3rd the Whitney Boys' chorus of Portland, a famous boys organization will have charge of the entire evening for a sacred concert. Fuller announcement will be made in a day or so of this service.

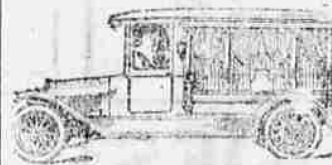
Every one in the city is invited to attend these services which promise fine things for the city religiously during the warm summer Sunday evenings.

REV. D. E. MILLARD,  
President.  
REV. E. P. LAWRENCE,  
Secretary Ministerial Association.



You need a good tea to make a good iced drink. Hivilla is delicious when iced.

DAY OR NIGHT



WEEKS-CONGER CO  
Funeral Directors

With good health packed in

TEMPTING, tasty and rich in nutrition, OLYMPIC Wheat Hearts make a cereal both appetizing and satisfying.

Of creamy whiteness this "meat of the wheat" fulfills the requirements of breakfast or luncheon efficiently and economically; adaptable for many goodies 'twice, too.

The OLYMPIC Line includes every family's favorite cereal—carefully milled, packed, wrapped and sealed.

At Your Grocers ALONG WITH OLYMPIC FLOUR

OLYMPIC FLOUR  
PANCAKE FLOUR  
WHEAT HEARTS  
FARINA  
CAKE AND PASTRY FLOUR  
SCARLET FLOUR  
HEALTH BRAN  
WHEAT CORNFAL  
JUST THE CORN MEAL  
MILLED OATS  
STEEL CUT OATS  
WHEAT FLAKES

**FREE TUBE OFFER**

ON

**PENNSYLVANIA TIRES**

EXPIRES JULY 1st

A Word to the Wise Is Sufficient

**THE BUSY CORNER MOTOR CO.**

"The Store Where Your Dollar Does Its Duty"

INTERNAL BATHS are the greatest aid to health

**J. B. L. CASCADE**

Ask for free booklet

Walden Pharmacy  
THE "ROSS" STORE

**SEWING MACHINES**

New or used, all late models Singer Electric.

Cash or credit on easy payment. All Machines Repaired.

First-Class Dress Making, Picotting, Hemstitching

Singer Sewing Machine Co.  
10 S. Fir Phone 215-11

**Fordson**  
TRADE MARK

LOOK FOR THE SIGNS ON THE FENCE THEY ARE SATISFIED—YOU COULD BE

The Tractor of all work. Fordson will do more different kinds of work than any Tractor built. Don't buy a plow machine only. Get a general purpose machine.

**C. E. Gates Auto Co.**  
Corner Sixth and Pacific Highway