

Your Kitchen clean as a new pin



YOU can keep it that way when you use a good oil cookstove. No drudgery—no dirt. Just touch a match to the burner and you have clean intense cooking heat. To be sure of best results in your stove, use Pearl Oil—the uniform kerosene. Pearl Oil is clean burning and economical. It is refined and re-refined by a special process. Every drop is converted into real heat.

Pearl Oil is for sale by dealers everywhere. Order by name—Pearl Oil.

STANDARD OIL COMPANY (California)

PEARL OIL HEAT AND LIGHT

MEDFORD PARTY TOURING STATE VISITS C. LAKE

Miss Grace Mitchell arrived home yesterday from Kallispell, Montana, where she was head of the Domestic Science department of the high school for the term just closed.

Miss Ida Johnson of Eugene, who also has been teaching in the Kallispell high, accompanied her home. The two young ladies made short stops at Spokane, Seattle, Tavoca, Portland and The Dalles, visiting friends and relatives. At The Dalles by previous arrangement they met Vesta Holt, who has been teaching at that place the past year and a party was made up consisting of Miss Holt, Miss Johnson, Miss Mitchell, Mr. Alan Woolley of The Dalles and Austin Raymond of Patricks Creek as guests of Miss Holt in her car motored through Central Oregon, via Bend, and Klamath Falls, taking in all the scenic attractions on the way, including Crater Lake to which place they drove as far as possible on the Sand Creek road and hiked over the snow the balance of the way. Owing to the wind blowing and the wonderful activity of the mosquitoes however they were rather disappointed in the view.

The party only stayed indoors one night on the trip, that was at Bend, where they put up at the leading hotel. The girls say that the landlord evidently heard that they were coming as the keys that the clerk gave them were decorated with sleigh-bells and there were signs in the rooms stating that every article was listed in the office and if anything was missing it would be charged to their account.

FLAG EXERCISES ARE IMPRESSIVE

The Flag Day exercises of the Medford lodge of Elks, assisted by the G. A. R. and American Legion, held last night at the Elks temple were well attended and very impressive. The hall was beautifully decorated with special flags, flowers and plants and it possible the most beautiful floral liberty bell ever made by N. S. Bennett. The G. A. R., the W. R. C. and the American Legion auxiliary were largely represented in the audience.

The program included the patriotic address by E. E. Kelly, introductory exercises and altar service by the exalter ruler and officers of the Elks lodge, history of the flag by Floyd Hart, solo by Mrs. Fred Straupe, orchestra selections, and selections by a quartet composed of Mesdames Fred Straung and Frank Isaacs and F. C. Edmeades and Wm. Vawter, and the singing of America by the audience.



"Straight is the Way"

In "Straight is the Way," the picture dramatization of "The Manifestation of Henry Ott," Ethel Watts Mumford's delightful original board satire, which will be shown at the Rialto theatre today.

Deft touches of brilliant satire, delightfully human characterizations, and droll situations are high lights in this production which from a scenic, histrionic, literary and directorial point of view reaches a remarkably high standard.

An exceptionally well balanced cast includes such sterling players as Matt Moore, George Parsons, Gladys Leslie, Mabel Bert, Van Dyke Brooks and Henry Sedley.

Brewsters Millions, Page "Brewster's Millions," which has been read by thousands of readers and which is considered one of the most popular novels ever penned by George Barr McCutcheon, has been adapted to the screen and serves as a feature for Roscoe (Fatty) Arbuckle. The round star will appear in the production at the Page theatre today and remainder of the week with a cast that includes Betty Ross Clark, Charles Ogle, Marion Skinner and a host of others. The story has served the stage also, but impartial critics declare the screen version excels it as a medium of humor.

Latest Arrivals at Auto Camp Grounds

The arrivals of Tuesday at the city auto camp were as follows: Mr. and Mrs. Sid Brown and child, and Sid Brown, Jr., of Weiser, Ida, enroute south in two cars; C. E. Christner and friend of Arlington, Kas., enroute to Seattle; Mr. and Mrs. J. Talbert and child of Marshfield, Ore., have with a view of locating; S. W. Chappell and friend of Klamath Falls, spending a day here; Mr. and Mrs. A. Altensstein and three children of Calos, Wn., en route to Lamont, Ida.; Mr. and Mrs. H. J. Bruecker and child of Moscow, Ida., enroute to Ashland; Mr. and Mrs. W. M. Zinke and child of Raymond Wn., touring to California.

Did you ever look at the back of this package?



This is why They Satisfy

—and the blend can't be copied

Chesterfield CIGARETTES 20 for 20 cents

In air-tight packages. Also obtainable in round tins of 50, vacuum-sealed.

LIGGETT & MYERS TOBACCO CO



Sold only by dealers

give tire mileage at the lowest cost in history

SIZE	NON-SKID		NON-SKID GORD	
	OLD	NEW	OLD	NEW
30x3	\$17.55	\$12.85		
30x3 1/2	20.80	15.00	\$34.25	\$27.50
32x3 1/2	26.30	21.00	41.15	36.40
32x4	34.95	26.90	52.30	46.30
34x4 1/2	49.85	38.35	62.05	54.90
35x5	61.15	47.05	77.35	68.45

30x3 1/2 RED-TOP, Old \$27.75, New \$22.00

Plus War Tax. Reduction on all styles and sizes.

A New Low Price on a Known and Honest Product

We Carry a Complete Line of

Fisk Tires and Tubes

MEDFORD AUTO COMPANY

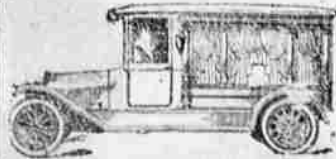
BUICK AND CHEVROLET CARS

Corner Main and Holly Streets.

STORAGE

S FURNITURE S
T MOVING T
O PACKING O
R and R
A SHIPPING A
G BAGGAGE G
E DELIVERED E

KEIZUR TRANSFER Cor. Bartlett & 8th. Phone 233



DAY OR NIGHT

WEEKS-CONGER CO

Funeral Directors

MAIL YOUR FILMS

to SWEM'S STUDIO 217 East Main St. Medford

You can afford to ride

A Harley-Davidson Gaylord Cycle Shop

We Make Paints, Varnishes For Women's Use at Home

THOUSANDS of women with keen home pride want to do their own painting and varnishing at home, and thousands do—with materials we make.

We make those materials especially for home use. You ask for "Fuller's Home Service" Paint Products.

And we maintain a special "Home Service Department" furnishing free information and detailed directions which will enable anyone to do his or her own work.

You simply describe the article, how finished now, and the effect you want to get. We tell you how, the kind of paint, the kind of brush—the things you need to know to do good work.

You'll be surprised, delighted

to see the transformation you yourself can make in home things—furniture, floors, walls, woodwork, bric-a-brac, etc.

"Just a can of paint or varnish and a little work that's fun," works wonders.

Our knowledge of paints and painting practice has been gained through 72 years' experience. We are one of the country's largest manufacturers of paint products and make the very finest kind of goods.

Don't think because you've never done it that you can't do work like this yourself. Try it with our help. Just follow Fuller's Specifications and you'll get the desired effects.

Remember—don't allow surfaces to rot. It costs less to paint them.

Fuller's SPECIFICATION "Home Service" Paints Varnishes - Enamels M'd by W. P. Fuller & Co.



WHERE TO BUY: Important that you get the right material so be sure to go to the right store for Fuller products. Cut out the coupon to the right as a memo to direct you.

Write us now—a postcard—for booklet of Fuller's Specifications.

Fuller's "Home Service" Paint Products which tells what to buy for the work you have in mind.

Consult our Advisory Department relative to the questions you may have in mind.

For all exterior jobs of painting it is advisable to obtain the services of a Master Painter



Fullerwear

"The All-Purpose Varnish" Adapted for any surface either inside or outside. The most durable varnish obtainable. Withstands interior wear and weather exposure. Does not scratch, peel, rub off or turn white. Dries overnight.

Fullerwear is Fuller's Specification for all-purpose varnishing at home—for furniture, tables, chairs, linoleum, etc. Boiling water cannot harm it, nor rolling furniture. Dries dust-free in four hours. Walk on it overnight.

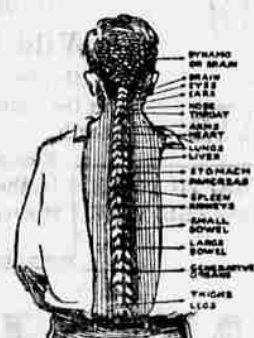
W. P. Fuller & Co. Dept. 11, San Francisco Pioneer Paint Manufacturers for 72 Years

Established 1849 Branches in 16 cities in the West Dealers Everywhere Also makers of Rubber-Cement Floor Paint, All-purpose Varnishes, Silver-white Enamel, Fifteen-for-Floors Varnish, Washable Wall Finish, Auto Enamel, Barn and Roof Paint, Porch and Step Paint.

SAVE THIS

(Cut this out and put it in your pocket-book or handbag as a memo) Fuller's "Home Service" Paints are sold by the following in your city:

THOMPSON THE PAINTER 128 N. Front St. Phone 364



CHIROPRACTIC WILL GIVE YOU HEALTH

Chiropactic will give you health. Nerve pressure is the cause of disease.

Dr. A. Burkland CHIROPRACTOR

GIM CHUNG China Herb Store

Herb cure for earache, headache, catarrh, diphtheria, sore throat, lung trouble, kidney trouble, stomach trouble, heart trouble, chills and fever, cramps, coughs, poor circulation, carbuncles, tumors, cracked breast, cures all kinds of gonorrhea. NO OPERATIONS.

Medford, Oregon, Jan. 12, 1917. This is to certify that I, the undersigned, had very severe stomach trouble and had been bothered for several years and last August was not expected to live, and hearing of Gim Chung (whose Herb store is at 214 South Front street, Medford), I decided to get herbs for my stomach trouble, and I started to feeling better as soon as I used them and today am a well man and can heartily recommend anyone afflicted as I was to see Gim Chung and try his herbs. (Signed) W. H. JOHNSON, Witness: Wm. Lewis, Eagle Point, W. L. Childreth, Eagle Point, M. A. Anderson, Medford, S. H. Holmes, Eagle Point, C. E. Moore, Eagle Point, J. V. McIntyre, Eagle Point, Geo. Van der Hellen, Eagle Point, Thos. E. Nichols, Eagle Point.

Wm. Lewis, Eagle Point, W. L. Childreth, Eagle Point, M. A. Anderson, Medford, S. H. Holmes, Eagle Point, C. E. Moore, Eagle Point, J. V. McIntyre, Eagle Point, Geo. Van der Hellen, Eagle Point, Thos. E. Nichols, Eagle Point.

Licensed CITY SCAVENGER

All refuse immediately removed on short notice. Weekly visit in residence district. Daily business district. Phone 888.

WHITSETT & JENNINGS

Medford Iron Works

Tractor, Truck, Spray Outfit, and Gas Engine Repairing a Specialty

GENERAL FOUNDRY AND MACHINE SHOP

GOOD CLOTHES

I Make Them

KLEIN THE TAILOR

188 East Main St.

YOU CAN GET MOST ANY OLD THING AT MOST ANY OLD TIME AT DE VOE'S