



Every drop POWER-FULL

"Red Crown" is all-refinery gasoline—with full power in every drop. It is made to meet the requirements of your engine.

"Red Crown" has the full and continuous chain of boiling points necessary for ready starting, quick and smooth acceleration, steady, dependable power and long mileage. Look for the "Red Crown" sign before you fill.

STANDARD OIL COMPANY (California)



Demand for Gasoline Increasing Faster than Supply. Owing to the increasing use of motor cars, trucks, tractors, motor boats and other devices operated with gasoline engines, the demand for gasoline is growing faster than the supply.

The Gasoline of Quality

W. E. Walker, Special Agent, Standard Oil Co., Medford

THOUSANDS JAM COLISEUM, WAIT FOR FIREWORKS

CHICAGO, June 8.—Hours before the doors were opened at the big Coliseum today thousands of persons were waiting and hoping to get in for a look at the unbossed republican national convention.

Political activities moved out of the hotel district and into the Coliseum itself with the assembling of the first session. It was the first opportunity of the various managers to meet the delegates all together and instead of buttonholing delegates singly and in groups they went after them in delegations.

Today's proceedings in the hall had little to do with the actual nomination, they were merely a rout ne, but indispensable preliminary to the sessions which are to follow.

True, the preliminaries include the keynote speech by Senator Lodge, of Massachusetts, temporary chairman, and that is the really big business of the first day. Whether the temporary organization with Senator Lodge as chairman is to be made the permanent one is still undetermined today.

While last minute arrangements were being made no change in the lineup was discernible and the various managers frankly admitted they saw no tangible evidences of which way the wind is going to blow. They were at it looking forward to the first ballots, which will come during the middle of the week, to point the way to courses of action.

The convention actually opened its first session at 11 o'clock Chicago time.

DEADLOCK WITH HUGHES TO FORE AS DARK HORSE

CHICAGO, July 9.—(A. P.)—Overnight reports and rumors from candidates' camps and delegation headquarters shed no light on the situation. A triangular deadlock between Wood, Lowden and Johnson still appeared the almost certain result to come on the first trial of voting strength Wednesday or Thursday with probably more than a score of favorite sons, dark horses or individual selection sharing more than half of the total vote.

The roll call will give, however, the first clear intimation as to what the massing of the more than 500 fancy free, unattached delegates have been thinking.

It will contain information for which all parties to the great dispute have been waiting.

It was this situation that gave dark horse talk additional prominence yesterday and with it came an undercurrent from arriving delegations of suggestion that after all, it might be wiser to put forward a candidate whose name had not been involved in the senate inquiry into pre-campaign expenditures and activities of presidential aspirants.

Again the name of Charles Evans Hughes, recurred in these discussions and Governor Coolidge of Massachusetts was also mentioned. There was more talk during the night of the possibility of short cutting convention preliminaries by making the temporary organization with Senator Lodge as chairman, the permanent convention structure. This would save many hours of organization work, it was argued.

COL. MILLER TELLS MINERAL WEALTH

Even with a most heavy rain fall around the hour set for the address of Colonel Robert A. Miller at the Library, there was an exceptionally large audience which greeted him and he gave a most interesting talk based upon the geological formations of Southern Oregon.

Beginning with the formations of Crater Lake, which he called the "Gem of the Cascades," he traced the mineral wealth of this region. Every known mineral with the exception of oil is known to be found here. Gold, silver, copper, iron, cinnabar and platinum are known to exist in large quantities, Oregon being one of the three localities which furnishes the world's supply of platinum at the present time.

If the mineral wealth which now exists near Medford would be five hundred miles from a railroad in South America, the millionaires would be clamoring to invest their money to get it, said Col. Miller, but as this wealth is at our very doors, the element of chance has been removed and the lure of the gold has been lessened.

Southern Oregon is still a great field for mineral exploration and the minerals and oil will not be produced unless an attempt is made to mine or drill for them. The wealth in the hills and under the floor of the valley cannot be determined until investigated, but, as the colonel stated, there is a far greater wealth remaining than the hundred million of dollars which has already been taken out in gold.

PROF. VINING WILL ADDRESS FORUM

Tomorrow noon at the Chamber of Commerce forum meeting, Professor Irving Vining of Ashland will address the members on what is to be done toward tourist development in connection with Ashland's new project. Mr. Vining, having been responsible in interesting eastern capitalists, knows what is contemplated by the investors in the hotel and springs. He will give first hand information of this development which means much to Ashland and every city in Southern Oregon.

A number of members of the Ashland Commercial Club, of a committee which is in charge of the installation of a forum for this club, will be in attendance to see how the Medford Chamber of Commerce conducts theirs and Medford should turn out in full attendance to greet them.

The forum will be held at the Medford hotel at noon and adjournment will be taken promptly at 1:15.

Got Good Results. This honest, straight forward letter from a woman who has suffered should be heeded by all afflicted with backache, rheumatic pains, sore muscles, awful tired feeling and other symptoms of kidney and bladder trouble: "I have got such good results from Foley Kidney Pills that I can sleep much better and the pain in my back and sides is a good lot better. I am going to keep on taking them." Mrs. Chas. Gray, 270 6th St., Detroit, Mich. For sale by Medford Pharmacy.

ANOTHER FIRM TO ENLARGE QUARTERS

Mordoff & Woolf have decided to enlarge their quarters, to accommodate their increasing business and have leased the building now occupied by the Golden Rule on West Main street, 50x100, and will move all their new goods thereto about August 15th and greatly enlarge their stocks of furniture, stoves and house furnishings. They will retain their present quarters, 50x120 feet, on South Fir street and will continue their second-hand business in that location.

This is one of the old established progressive firms of the city.

THOS. H. SIMPSON NEW COMMISSIONER

The county commissioners have chosen Thomas H. Simpson of Ashland to fill the unexpired term of the late George Owens, which expires next January. Mr. Simpson has lived in the county a number of years, is a practical, thorough business man, understands the needs of the people of the county, and will make a first class commissioner. He was urged to make the race for the nomination by people all over the county, but declined.

The board meets Thursday.

Census Returns

WASHINGTON, June 8.—Port Horn, Mich., 25,944 increase 7081 or 37.5 per cent. Marietta, Ohio, 15,100 increase 2177 or 16.8 per cent. Eau Claire, Wis., 20,880 increase 2570 or 14 per cent.

Advertisement for Post Toasties featuring a child and the text: "If you want to get solid with your daddy - says Bobby - have your mother feed him Post Toasties best of corn flakes"

Advertisement for Stenography and Multigraphing by Tunnell & Edwards, located at 104-208 Liberty Building, Medford, Oregon.



A trunk full of kind words

can't tell the news about Camels like your taste will!

WHAT you like most in a cigarette you'll find in Camels—they are so refreshing in flavor, so delightful in mellowness, so smooth, yet so full bodied.

Camels quality and Camels expert blend of choice Turkish and choice Domestic tobaccos make the most wonderful combination ever put into a cigarette! You will prefer this blend to either kind of tobacco smoked straight! Smoke Camels liberally—they will not tire your taste!

Another feature about Camels, they leave no unpleasant cigarettey aftertaste nor unpleasant cigarettey odor!

You'll choose Camels quality and Camels blend to any premiums, coupons or gifts you ever heard tell of!



R. J. Reynolds Tobacco Co. Winston-Salem, N. C.

Camels are sold every where in scientifically sealed packages of 20 cigarettes for 20 cents, or ten packages 100 cigarettes in a glassine paper covered carton. We strongly recommend this carton for the home or office supply or when you travel.

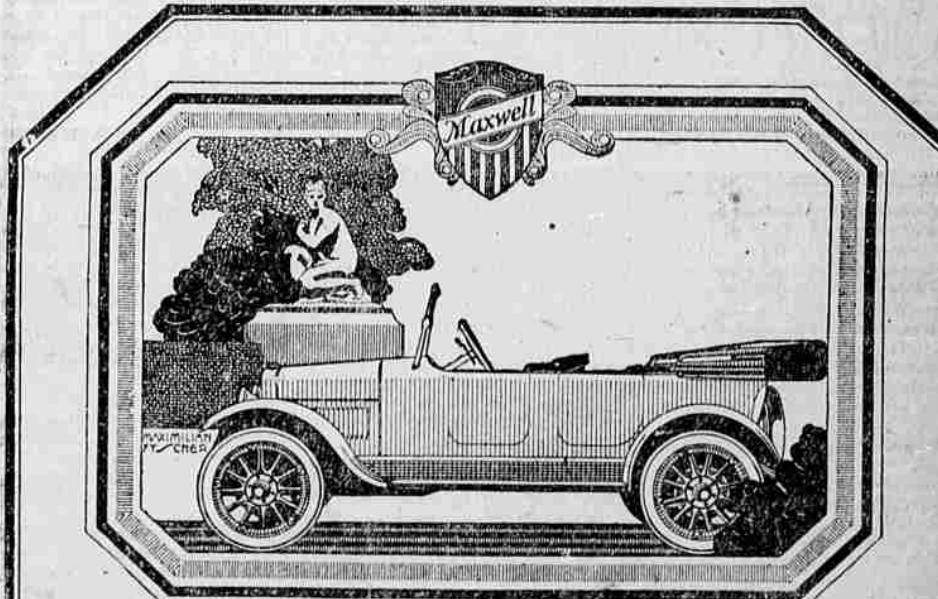


Advertisement for Jantzen Knit Wear featuring illustrations of women in swimsuits and the text: 'Inseparable from the good times of summer—SWIMMING—at the beach or in the pool! These pleasant hours of golden summer days will be memorable if your suit carries the label of Jantzen Knit Wear'.

Advertisement for Fruit Shippers: 'TO FRUIT SHIPPERS We take pleasure in announcing that we have completed arrangements to pack and handle all our fruit, through the Rogue River Fruit Distributors Packing Plant this coming season. DENNIS, KIMBALL & POPE, INC. E. M. McKeany Pacific Coast Representative. Office Holland Hotel Bldg.'

Advertisement for Mr. Orchardist: 'Mr. Orchardist We are pleased to advise that we can furnish Orchard Brand Spray Materials, Powdered Lead, Paste, Blackleaf "40", etc. We also have a lot of No. 1 made up apple and lug boxes. Let us quote you prices. Farm Bureau Co-operative Exchange Phone B-22. "Perry's Old Stand"'

Advertisement for The Dow Hospital: 'Fifth and North Riverside Telephone 11 The Dow Hospital Graduate Nurses Only Special Attention to X-Ray Cases.'



Those Good Brakes in a

MAXWELL

are aided by special steels

Brakes seem to be one of the overlooked features of a motor car. In a Maxwell they have had the extreme of attention. For instance, a road engineer, in about 500,000 miles of experimental driving, has constantly tested and studied them. That is why you can check the speed of a Maxwell in an instant and bring it to a standstill either by foot brake or hand brake. Special steels in a Maxwell are largely responsible. They give it extra strength in wear and endurance, but they make the car light in weight. Thus when you call on it to halt, the brakes are not required to "wrestle" with superfluous weight, and the momentum of the car is easily stopped. These are steels made to Maxwell's own formulae. They equal, pound for pound, the steels in any car built. But no car has steels just like them. In a large measure they contribute to Maxwell's growing prestige, as expressed in figures like these: nearly 400,000 now in use; and 100,000 more for the year 1920.

A. W. Walker Auto Co. Medford, Oregon