

Owners Do Not Wait While Valves Are Ground

IT IS no wonder the Willys-Knight owner becomes more enthusiastic over his car the longer he drives it. The Sleeve-valve motor improves with use, and performs consistently every day. Free from valve grinding and repairs, it is always ready for immediate service. The rigid, dependable chassis and beautiful, durable coach work complete the full measure of owner satisfaction.

The car that improves with use

WILLYS-KNIGHT

FEDERAL Double Cable Base Tires



FEDERAL Tires save to you the many miles of service which rim-wear robs you of in ordinary tires. Federal Double-Cable-Base construction effects this saving at no additional cost per tire.

Our **Accessory Stock** is **Complete and Priced Right**

ANNOUNCEMENT

New Location

McCurdy-Bowen Motor Co.

Sparta Building—Main Street and Pacific Highway

Service

It is our aim to render the best SERVICE possible in all our lines.



Our New Home

Is one of the most up-to-date plants on the Pacific coast and is located on the Pacific Highway.

In less than a year we have outgrown two other locations and have been forced to lease for a period of years the best location in Medford and Southern Oregon—Main Street at corner of Pacific Highway

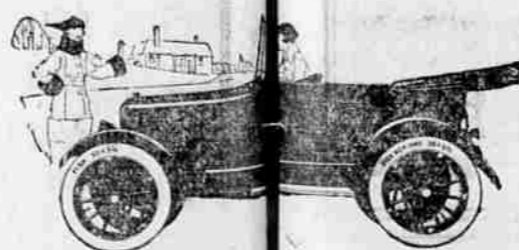
COME—LOOK

At the Overland Chassis and see the Triplex springs.



New Triplex Iron Out Road

ROUGH ROADS seem smoothed out by the wonderful new Triplex Springs of Overland 4. Triplex Springs hold the wheels to the road, while the passengers ride in comfort. Their astonishing qualities have created an entirely new conception of light car riding ease. This comfort is now obtainable in a light car with economy in fuel and tires and remarkably low upkeep cost. Overland 4 is started and lighted by the Auto-Lite two-unit system. It has U. S. L. batteries. It is equipped with all the latest car essentials and conveniences.



When You Have Tire Trouble

Call us up

We are

At Your Service

for tire changes for

Federal and Pennsylvania Tires

Pennsylvania Vacuum Cup

TIRES

Cords

HIGHEST QUALITY

Fabrics

The "Yellow Chassis" Trucks



that serve so well.

The sensation of the Truck Shows

Republic INVINCIBLE Model 19, 2-2 1/2 tons capacity, is an improved motor truck that has been the center of interest at every truck show this year.

Its capacity rating is extremely conservative. It is so sturdy and powerful that you put it down as a much heavier truck, on sight.

That it will stand up under the most strenuous work is assured by the fact that it is basically the same as the 50,000 Republic Trucks which have made remarkable hauling records in every kind of business and industry. Many improvements have been made to give added service value.

Model 19, Republic INVINCIBLE 2--2 1/2 tons

The radiator has been enlarged to give cooling capacity equal to any climate or emergency. Continental motor of latest type with 28.88 horse power at 1000 r.p.m. insures ample power.

Four speed transmission adds flexibility and gives more power on the low speeds where most needed.

Late type oil governor holds truck to rated speed and delivers maximum power at all speeds.

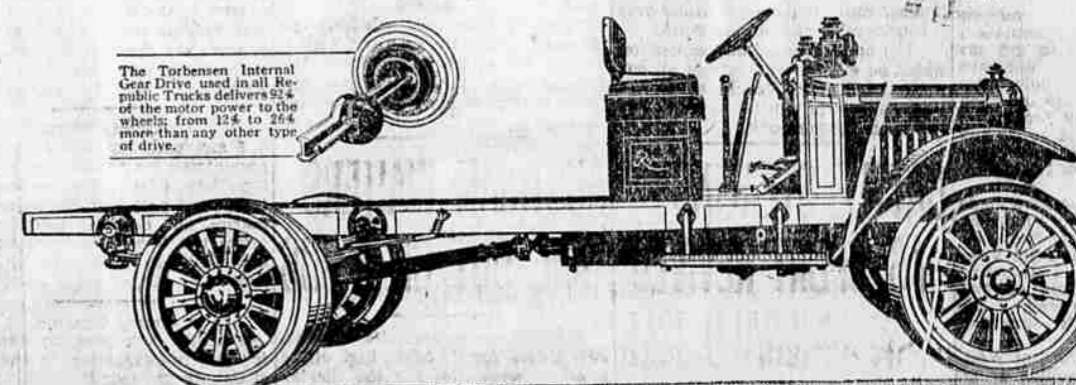
Rear spring suspension is constructed according to government design.

Many other improvements make this truck the most efficient and economical hauling unit in its class.

Wheelbase 144"; optional 168"; Firestone pressed on tires, 36" x 4" front; 36" x 7" rear;—pneumatics extra price.

A well balanced truck adapted to a wide range of business uses.

Only by seeing this truck can you appreciate its unusual value. Telephone us and we will be glad to have our representative call.



REPUBLIC Internal Gear Drive MOTOR TRUCKS

Built by the Largest Manufacturers of Motor Trucks in the World