

# SHERIFF OPENS TAX COLLECTION OFFICE ASHLAND

ASHLAND, Mar. 24.—As far as this vicinity is concerned, everything is in readiness for the convenient payment of taxes, the first half of which for the year 1919 is now due. To accommodate local taxpayers Sheriff Terrill has opened a collection office in rooms formerly occupied by White's Jewelry store on the Plaza, which will be open from 9:30 to 12 a. m. and 1 to 5 p. m. daily until further notice. O. Winter is in charge, and these matters will be expedited to the relief of conditions which have prevailed in previous years. Remember, the first half must be paid on or before April 5, 1920, or the entire tax for the year becomes due and payable. While Winter is collecting for the past, R. P. Campbell is assessing for the future, and between the 1919 and 1920 milestones federal collectors come along with the result that the tax is ground still finer than ever. But please remember that not only the nation at large, but also state, county and municipality—not to overlook the school district—loveth a cheerful giver.

The soldier boys, and literally "their name is Legion," will afford a premier musical entertainment at the armory on Wednesday evening, March 24, the attraction being the O. A. C. Band, which is making a spring tour of Southern Oregon. Aside from its merits as representing a leading state institution, its visit here is doubly welcome owing to the fact that among its personnel are a number of former Ashland boys, including Bert Freeman and Olin Douglas. Bert is extra proficient on the clarinet. Frank Ross and Cliff Hatfield of Central Point are also with the aggregation. The band's versatility is up to all the traditions of musical excellence. Following the concert proper, a jazz unit from the organization will speed the lively steps of a social dance which follows.

"Can you beat it?" is the query which Dr. A. W. Hoslough propounds in regard to Wisconsin weather, notably in the latitude of Barnumwood, where he is now located. On March 8 in that section a big thunder storm raged, and on the following day it was ten below zero. He states that he has driven no less than six horses the past winter, three of them being in the discard owing to strenuous service. No wonder "Doc's" thoughts revert to the weather conditions which he formerly experienced in this section of Suny Southern Oregon.

Raymond Badger, Elmer Bagley, Ernest Abbott and Elwood Hedberg are among Ashland students home from O. A. C. for the spring vacation. Raymond comes particularly to meet his parents, who are returning to the old family home here after a long stay in Oakland, Cal.

Malta Commandery, Knights Templar, a large proportion of the county membership of which reside in Medford and vicinity, will attend divine service at the Methodist church in Ashland on Easter Sunday, April 4, by invitation of the pastor Rev. C. A. Edwards. Rev. William Wallace Youngson, superintendent of the Portland district of that denomination, and an official high in the councils of the Templar organization throughout the state and nation, will deliver the address. There will be a formal order of exercises and special musical adjuncts to the service, which will be held at 2 o'clock in the afternoon. Malta Commandery of Grants Pass has also signified an intention of being present at this Easter service, an annual observance which is participated in by Templars in all countries throughout Christendom.

The W. G. Hale family have returned from the winter's stay in the vicinity of Santa Clara, Calif.

Lloyd Casebeer, skilled pianist and well known Ashland boy now of Portland, will participate in a musical portion of the program incident to the Older Boy's Conference, to be held under Sunday school auspices of the state, in Portland March 27, sessions to be held in Tabor Presbyterian church. The Older Girl's Conference along similar lines will be held at Cottage Grove, March 26/28, the gathering in this respect being the eighth annual one.

Justice W. H. Gowdy is now filling the office of city judge and in view of the fines recently assessed against car owners, who violate both state enactment and municipal ordinance, his penalties have become a terror to speeders.

Mrs. E. C. Gard, now of Seattle, but for years a resident here, and one of Ashland's foremost civic and social workers, has been visiting the old home surroundings recently, and on Wednesday of this week was the guest of honor at a reception held at the Temple of Truth, given by a host of friends as a token of esteem in behalf of the former co-worker.

Funeral services of the late Mrs. Ida Alice Hill, who died in this city after prolonged illness, were held on Tuesday at the Methodist church. Interment was in Hargadine cemetery. Deceased was a native of Jackson county and was 50 years of age. She was the wife of Wilmer Hill, and sister of Clarence Lane of this city. The family home was on a ranch over in the vicinity of Hill. In addition to the husband and brother, she leaves

a large number of other relatives and friends in this locality.

After sojourning in Southern California for a long time, G. W. Crews has returned to the old family home on Granite Street. He has been at Holtville, in the Imperial Valley, where his son-in-law, Professor Wardrip, whose name is a familiar one as being connected with the Ashland Normal of former days, is superintendent of that town's schools.

Rev. A. J. Sullens, superintendent of congregational activities throughout the state, was an Ashland visitor early in the week and occupied the pulpit of the local church last Sunday.

The Masonic lodge will work a double header on the third degree Friday evening, March 26, to which members of the craft in general are invited to participate.

In the realty transfer line among recent sales, trades, and purchases, Mrs. Sarah Gartner has bought the residence property on Sixth street, next door to the Catholic church. A chief transaction has been a sale of the P. L. Ashcraft model orchard, and garden tract, three acres in extent, at the intersection of Winter street and Scene Drive. This is probably the most intensively cultivated tract within city limits, for years past Mr. Ashcraft having devoted to it every application of progressive horticultural methods, with the result that the orchard and garden are exponents of ideal development. A comfortable roomy house and other improvements go with the property which has been purchased by R. W. Johnson of Fossil, one of Ashland's numerous colony of home-seekers from Eastern Oregon. Possession will be given next fall. It is understood the transfer was on the basis of \$4,500. The Frechberg home on Granite street, one of the cozy places on Granite street, has been purchased by R. D. Wallsten. The Allen bungalow on Pioneer Avenue has been purchased by Mrs. Nellie Conner, lately returned from San Francisco, who will improve and occupy the property.

## MOTHERHOOD WOMAN'S RIGHT

How Lydia E. Pinkham's Vegetable Compound Helps to Make Women Normal.

Washington, Ind.—"I was in such a condition that I never expected to have children and my aunt advised me to take Lydia E. Pinkham's Vegetable Compound. It improved my health and restored a normal condition of my system so that I now have a fine baby. Until she was about a year old I was very nervous, and all the time thinking something terrible was going to happen. If I heard anyone coming my heart would beat fast and I wanted to run. So I took the Vegetable Compound again and it helped me wonderfully. You may publish my letter as the evidence is surely great."—MRS. I. V. A. BANTA, R. 6, No. 4, Box 24, Washington, Ind.

Among the virtues of Lydia E. Pinkham's Vegetable Compound is its ability to correct sterility in many cases. This fact is well established as evidenced by the above letter and hundreds of others we have published in these columns.

In many other homes, once childless, there are now children because of the fact that Lydia E. Pinkham's Vegetable Compound makes women normal, healthy and strong.



THOUGH vegetables cost a lot in market—you can have them in plenty, without paying so much! And better vegetables, and fresher! Just a little space—a little care—and Morse's a-filling seeds. You can get them

at grocers, florists, drug and hardware stores, etc., everywhere.

C. C. MORSE & CO. (INC.)

125 Market St. San Francisco

## MORSE'S SEEDS

Handled in Medford by

Monarch Seed & Feed Co. 317 E. Main St.

## STAR TAXI

PHONE 300  
Cars for hire with or without Driver.  
JAMES LESLIE  
Nash Hotel

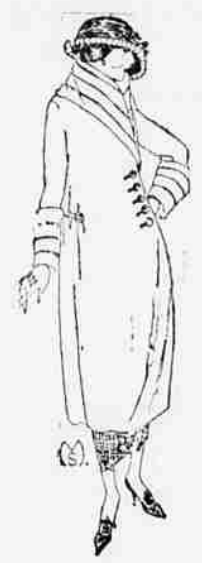
# Buy Your Easter Togs Now

As It Is Only a Few More Days Until Easter

This store is filled with the newest of Spring styles in Suits, Coats, Dresses, Skirts, Blouses and Shoes

## LADIES' READY-TO-WEAR

### New Easter and Spring Coats



Are here in all the bright new colors and styles. We have them in Polo Cloth, Pompon, Broadcloths, Tricotines, Gaberdines, Jerseys, Serges and Mixed Suitings. Our prices are right and we will be glad to have you inspect our line before you buy. These coats are priced at \$15.75, \$24.75, \$32.50, \$35.00, \$38.50, \$45.00, \$67.50 and \$72.50.

### New Easter and Spring Suits



In Tricotines, Jerseys, Gaberdines, Tricotines and Serges. A good assortment of styles and colors. These range in sizes from 16 and 18 years to 43—45 and 47 stout. They are priced at \$23.75, \$29.50, \$35.25, \$37.50, \$44.50, \$44.00, \$50.00, \$55.00, \$63.75, \$75.00, \$79.75.

We carry the Printzess and Palmer Suits. (These names speak for themselves), besides other lines. These Suits as well as Coats, Dresses or Skirts are fitted and finished up without extra cost to you.

### THE NEW DRESSES ARE BEAUTIFUL

In soft Taffetas, pussy Willow, Georgette, Satin finished Taffeta; combination of figured Georgette and satins; ember Georgettes, combination accordion pleated and emb. Georgettes; in fact this line is very complete and the sales ladies are glad at any time to assist you in making your selection.

Prices are \$23.75, \$25.00, \$33.75, \$40.00, \$50. We also have a good line of wool dresses in Tricotines, Jerseys and Serges, priced at \$15.00, \$15.75, \$19.50, \$27.50, \$33.75, \$37.50, \$40.00 and \$50.00.

### NEW SPRING SKIRTS

We know the styles and price on the new skirts are right. By the way we are selling them, don't wait too long to buy yours.

Silk Poplins \$4.75, \$5.00, \$8.25, \$16.50 and \$18.75  
Jerseys at \$10.85 and \$13.50  
Cotton and wool mixed and all wool priced from \$8.99, \$12.75 \$13.50 to \$15.00.  
Plaids and fancy striped wool at \$13.50, \$14.00, \$16.00 and \$17.75

### THE NEW BLOUSES

Are very pretty, some with the wool emb., some beaded, others in silk emb. and plains. We have a good assortment of colors and styles, priced at \$5.65, \$6.75, \$8.50, \$9.75, \$10.00, \$19.75 and \$20.00

Tub Silk Waists \$11 to \$11.50  
Silk Jersey Smocks at \$15.00 and \$16.50

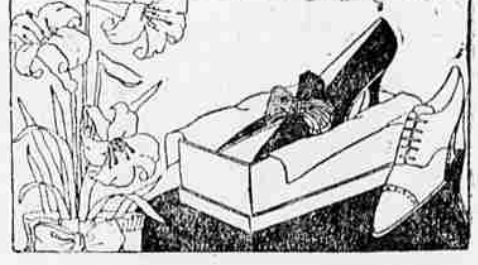
THE PRICES ON ALL GARMENTS IN THIS DEPARTMENT SHOWS THE GOLDEN RULE SAVING POWER

## EASTER SHOES FOR ALL THE FAMILY

Everybody can afford to have a new Shoe for Easter if you buy them here

### LADIES' SHOES

Never before have we ever shown such a beautiful assortment of Ladies' Fine Shoes, Oxfords and Pumps. We have all the latest styles and in the very best grades of leather. Come in and get the kind you want now while the stock is complete and your size is here. We carry nearly all widths and sizes and our prices are the lowest.



### MEN'S SHOES

We carry a large assortment of Men's Dress and Work Shoes. In Men's Dress Shoes we carry the Barry Dress Shoe, manufactured at Brockton, Mass. In five years of selling these shoes in Medford we have never taken up to exceed fifteen pairs of shoes out of the many hundreds of pairs that were sold. If you want styles, quality and service get a Barry Shoe.



### LADIES' PUMPS AND OXFORDS.

- Black Kid, French Heel Pumps at \$8.25
- Black Kid, French Heel Pumps at \$7.25
- Black Kid, French Heel Pumps at \$7.25
- Black Kid, French Heel Button Trimmings Pumps at \$7.85
- Black Kid, French Heel Tie Pumps at \$7.85
- Brown Kid, French Heel Tie Pumps at \$8.50
- Brown Kid, French Heel Pumps at \$8.45
- Black Kid, Military Heel Pumps at \$7.00
- White Kid, French Heel Pumps at \$10.30
- White Canvas, Military Heel Oxfords at \$4.40
- White Canvas, Low Heel Oxfords at \$3.98
- White Canvas Pumps, high heel at \$5.25
- White Poplin Oxfords, military heel, at \$5.45
- White Canvas Pumps, military heel at \$5.25
- Brown Oxfords, military heel, at \$8.50 and \$8.85
- Brown Oxfords, French heel at \$8.50
- Black Kid Oxfords, French heel at \$8.00 to \$10.00
- Black Kid Oxfords, military heel at \$6.45 \$7.50 and \$9.80

### LADIES' SHOES

- White Canvas Shoes, military heel, at \$5.25 to \$5.75
  - White Canvas Shoes, French heel at \$5.75
  - White Nubuck Shoes, French heel, at \$9.25
  - Dark Brown Lace Boots, high heel at \$12.75 to \$14.40
  - Black Kid Lace Boots, high heel at \$11.65
  - Black Kid Military Heel Lace Boots at \$9.35
- Other shoes too numerous to mention. Come in and we will gladly show you our shoes and give you the prices on each one.

- Dark Brown English Shoes at \$9.75, \$10.55 to \$13.35
- For the man with a wide foot get the Barry K. D. last at \$9.50
- Barry's Cushion Sole Shoes at \$12.20
- Other Dress Shoes at \$9.50, \$10.55 to \$13.35

### OXFORDS

- Dark Brown Calf, Lace Oxfords at \$12.90
- Dark Brown Kid Oxfords at \$10.95

### MEN'S WORK SHOES

- Very Large Assortment to Choose From.
- Regular Army Shoes at \$7.49
- Other Work Shoes at \$3.75, \$5.25, \$6.25, \$6.75 to \$8.50

### MEN'S MULE AND ELK WORK SHOES

- One lot of old shoes left over from last year and year before, at \$2.35 to \$3.50. Broken sizes.
- Mule Skin Work Shoe, for orchard work at \$4.00
- Elk Skin Shoes at \$3.75 to \$5.00
- Elk Skin Welt Sole, a very comfortable summer shoe at \$6.95

### CHILDREN'S SHOES

- Our new Slippers in patent leather, kid and white canvas; are in also our white canvas, rubber sole shoes and slippers.
  - Slippers priced at, in sizes 5 to 8 at \$2.45
  - Slippers priced at, in sizes 8 1/2 to 11, at \$2.85
  - Slippers priced at, in sizes 11 1/2 to 2, at \$3.48 and up
  - White Canvas priced at, in sizes 5 to 8, at \$1.45
  - White Canvas priced at, in sizes 8 1/2 to 11, at \$1.75
  - White Canvas priced at, in sizes 11 1/2 to 2, at \$2.05
- We can save you money on Girls' and Boys' School Shoes.

WHEN YOU BUY YOUR SHOES HERE YOU GET THE BEST AT THE LOWEST PRICE AND A FIT OR NO SALE

We Underbuy and Undersell



The Most in Value The Best in Quality