

ESSEN'S CAPTURE WILL END WAR STATES EXPERT

Fortifications on West Bank of Rhine Valuable After Metz is Taken by Americans—Forts of no Use to Stem Invasion as Proved Early in Present War.

(By J. W. T. Mason, famous military authority.)

NEW YORK, Sept. 17.—When America's millions begin their invasion of German territory, in the final offensive of the war, they will be able to cross the Rhine at many points if the necessities of the campaign require it.

The German army cannot retire behind the Rhine, take up defensive positions, and defy the world to do its worst. The Rhine is vulnerable.

Furthermore, every important city on the Rhine is situated on the west bank. America's armies will not have to cross the river to capture Strassburg, Mayence, Coblenze or Cologne. They are ready now for seizure on the near side.

But, before reaching the Rhine, the Americans must first break Germany's great offensive line, which runs from Metz, southward to Chateau Salins, then southeast thru Saarburg to Strassburg.

Saarburg Key to Line

This front, across the border from French Lorraine, is Germany's first stronghold against invasion. It is probably the most heavily fortified line in the world, and the most scientifically constructed. Back of it is a remarkable net of military railways, constructed years ago for the purpose of preventing a French army getting into Germany. The key to the line is Saarburg, where immense strategic railway yards have been constructed.

The defenses have been planned with unusual care, not only because they guard the Rhine. Immediately to the north of the line are the great coal and iron fields of the Saar district. These fields are one of the three main mining groups in Germany. If they are captured by the Americans, as they will be, Germany's munitions output will be seriously curtailed. One reason for believing that General Pershing's plan of campaign calls for an invasion of Germany northward thru Lorraine is because of the location of the Saar mines so near to the American front in France.

Rhine Extensively Fortified

Having moved back the Metz-Chateau Salins-Saarburg line, and having got possession of the Lorraine mineral area, the Americans may then be expected to reach out further east for the Rhine, and widen their front.

The Rhine is lavishly supplied with fortress protection. From the Swiss border northward, the principal fortresses are Neu Breisach, Strassburg, Gernersheim, Mayence (or Mainz), Coblenze (with Ehrenbreitstein, Cologne and Wesel. Of these, the only fortresses on the east bank are Wesel which is a defense against invasion from Holland, and Ehrenbreitstein.

Regardless of their situation, the value of these fortresses for defensive purposes has been greatly reduced by tactical developments during the past four years. Before the present war began, many believed in the impregnability of the Rhine line. Not so now. The German guns that reduced Liege, Antwerp, Maauberge and other entrenched camps early in the war, made obsolete the Rhine fortifications.

Easy Mark for Big Guns

The allies now have similar cannon of their own. At long range they will be able to pulverize any fortified German position above ground which the kaiser may be foolhardy enough to defend.

This doesn't mean the Germans cannot protect a single point along the Rhine by a lavish use of men. The French defended Verdun, but it wasn't Verdun that defended France. Verdun, equal in strength to any Rhine fortification, was held from the enemy not by its own immobile guns, but by the infantry and mobile cannon that protected the citadel in distant, outlying positions.

Men Feel Tired, Too

While much is said about tired women it must be remembered that men also pay the penalty of overwork. When the kidneys are weak, inactive or sluggish, when one feels tired out and miserable, lacks energy and ambition. Foley Kidney Pills are tonic and strengthening. Wm. H. Clark, Springfield, Ohio, writes: "I found no relief from kidney trouble until I discovered Foley Kidney Pills. Now I am in A1 shape." They act quickly and surely. For sale by Superior in Manpower

mans are called upon to defend, the weaker will be their reserves. On the other hand, the allies will be so superior in manpower that their own reserves will not suffer thru an enlargement of the front.

The Rhine runs thru a wide valley from the Swiss border as far as Mayence. The banks are low and flat. The river is wide, varying from 500 to 3500 feet, but at many points there are islands which will materially assist military bridge making. Above Mayence, the banks are rock and difficult to bridge. But, beginning at Coblenze, these obstacles gradually disappear, and at Cologne, the west bank is flat, tho there are hills across the river.

The rock sides of the river are a protection for Frankfurt from a western approach, but do not prevent a sortie across the river from the south. Frankfurt is about 20 miles east of the Rhine, and will certainly be a point of attack if General Pershing makes a serious effort to carry the war back of the Rhine barrier. Frankfurt is the financial capital of Germany, and its capture would be inferior in importance, politically, only to the occupation of Berlin, Cologne or Hamburg.

Seek to Reach Cologne

Proceeding northward along the Rhine, the Americans will probably seek to reach Cologne. The fall of Cologne would threaten Germany with strangulation. In the immediate environs of Cologne the second of Germany's three great coal and iron fields is located. Dusseldorf, the center of the mining district, is 25 miles north of Cologne, and the great Krupp works at Essen are about 20 miles still further northward.

An advance by the Americans to Essen would mean the ending of the war, unless the Germans acknowledge defeat before that catastrophe overtakes them.

Probably Essen marks the furthest limit of America's war plans for the time being. Cologne itself, which would be the base for operations against Essen, is on a line almost parallel to Brussels. Expressed this way, the distance doesn't seem so far, tho by direct measure from the present American front it is about 150 miles away. The terrain is about the same as that over which the present fighting is proceeding in France, except that in one or two places, there are hills which run to mountainous proportions. Nevertheless, nothing impregnable stands in the way.

Essen's Fall Ends War

While the main American offensive will probably move northward along the Rhine from Lorraine, a subsidiary drive may well be developed in Alsace, to the south. The Rhine is more easily crossed in Alsace than elsewhere.

By moving to the east bank and striking into Baden, two important purposes will be served. First, south Germany, which has no love for Prussian arrogance, will be given a bitter taste of the world's resentment against the Hohenzollerns. Second, and important, the line of battle will be lengthened.

Von Hindenburg is now trying to abridge his front in France so as to accumulate enough reserves to make a concentrated defense possible against the Americans inside German territory. He will be unable to carry out this strategy if, after his line is shortened in France, it is stretched across the Rhine well into Germany.

5000 TONS OF OLD CLOTHES FOR BELGIANS

WASHINGTON, Sept. 17.—Five thousand tons of clothing for the destitute people of occupied Belgium and France is the object of a campaign announced today by the American Red Cross for the week beginning next Monday. The clothing drive of the Red Cross last March brought in 5000 tons of garments and it is estimated that at least as much more will be required to clothe the ten million people in the territory during the coming winter.

DANISH KING DECORATES FORMER U. S. AMBASSADOR

COPENHAGEN, Sept. 17.—King Christian bestowed the grand cross of the Order of Dannebrog on Dr. Maurice F. Egan, former American ambassador to Denmark. This is the highest decoration which can be awarded a commander.

Up to the Russians

The establishment of the eastern front anew is a question which the Russians must answer for themselves. But they cannot answer it when they have no chance to express their wish; there are none of the

RUSSIAN PEOPLE TIRED OF ANARCHY TO WELCOME ALLIES

(By Harold Edwin Bechtel.)

LONDON, Sept. 17.—"The Russian people as a whole will, I believe, welcome allied intervention," said Sir George Buchanan, British ambassador to Russia for years, in an interview today.

Sir George is recognized as one of the foremost authorities on Russian affairs in Great Britain.

"My hope is," he continued, "that when the allies set up an organization in Russia it will be the nucleus of a great force to which all patriotic Russians will rally."

In granting this interview, Sir George made it clear that he was expressing his own personal views and was not speaking for the British government.

The former ambassador takes no stock in the theory that the allied expedition will arouse antagonism among the Russian millions and increase the power of those who are seeking to exploit the east. As he explained:

"The Russians—I refer now to the vast majority of the people—feel that their country is going to rack and ruin; their industry is rusting away; their agriculture is in a more or less moribund state; their country has been split up into small states; hunger and disease are everywhere; and the greatest organized power in most of the country is the Bolshevik army, made up largely of Austrian and German prisoners.

People Tired of Anarchy

"German rule has failed to bring order and peace in the Ukraine and elsewhere. The people are tired of the prevailing anarchy.

"Certainly it seems to me that the time is ripe when all Russians who love their country will welcome an expedition by friends who promise relief.

"I do not like the word 'intervention.' It is too likely to be misinterpreted to mean interference in Russian internal affairs, which is, of course, the farthest thing from the minds of the allies, as has been forcefully pointed out by President Wilson. I should prefer to use the words 'military and economic assistance.'

"President Wilson struck the keynote when he said that he was determined to 'stand by Russia.' And that is what we have all got to do.

First Step Military

"The first step taken in Russia must of necessity be military, because we must certainly, in any event and whatever the force required, rescue the gallant Czech-Slovaks who are cut off in European Russia and Siberia. And it is also necessary first to set up an organization.

"But right on the heels of this should come relief—economic assistance and food. That is what the allies promise.

"When I returned from Russia I was most disturbed to find in Great Britain resentment over the defection of Russia and a general feeling of hopelessness over the eastern situation.

"I said in a speech then, and I say now: 'Russia is not dead.' But she cannot recover health and strength without outside help; she cannot hope to take in hand the work of industrial and economic reconstruction without the assistance of foreign capital and foreign technical advisers. That capital and that expert advice must come from the allies and not from Germany."

Must Use Japan's Army

Referring to a feeling in some quarters that "the war will be won in the west," and that anything elsewhere is a "sideshow," Sir George said:

"It is true, of course, that the military decision will be won in the west, and that it would be a mistake to divert any considerable number of troops from that theater of war.

"We cannot, however, make the mistake of allowing Germany to establish her military and economic domination over Russia, for if she is able to draw men and supplies from Russia she will be able to prolong the war for years.

"We must prevent this at all costs, and if we cannot spare men from the west we must appeal to Japan to send whatever troops are required for the purpose.

"We must not, however, forget that if once Germany gets Russia into her clutches, she will hold to her prey despite all the victories we may gain in the west, and that if Germany becomes mistress of the east she will have won the war!

Up to the Russians

"The establishment of the eastern front anew is a question which the Russians must answer for themselves. But they cannot answer it when they have no chance to express their wish; there are none of the

which every true Russian so ardently desires.

"Let us remember that if the Germans are allowed to carry out their plans in the east, there can be no hope for the perpetual peace which we are fighting in the west to attain.

"Germany as mistress of the east with its enormous natural resources and immense population, would be a perpetual menace to the peace of the entire world.

"Russia is not only important; Russia is vital!

"Germany's object in the war, henceforth, will undoubtedly be to make concessions in the west to gain a free hand in the east.

"Peace on such terms would be very alluring to our pacifists, but for the allies to accept such terms would be nothing short of suicide!"

WHOLESALE EXECUTIONS INCREASE IN PETROGRAD

STOCKHOLM, Sept. 17.—Wholesale executions are increasing in Petrograd, private telegrams received by the way of Helsingfors, report during the past week 812 persons were executed; of more than four hundred others on the prescribed list, most have been made hostages.

All persons of the rank of councilors of state have been imprisoned.

147,520 TONS OF SHIPPING, 13 DAYS

WASHINGTON, Sept. 17.—Twenty-six ships with a dead weight tonnage of 147,520 were delivered to the shipping board by American yards during the first 13 days of this month the board announced today. During this same period 28 steel and wood ships of 159,370 dead weight tons were launched.

TIME TO CONVERT LIBERTY BONDS LAPSES NOV. 9TH

WASHINGTON, Sept. 17.—The treasury department again reminds holders of 4 per cent Liberty loan bonds that these securities are convertible into 4 1/2 per cent bonds of the Third Liberty loan, and extends a warning that this privilege lapses November 9 and cannot be renewed.

A statement issued over the signature of Secretary McAdoo says: "Holders of these 4 per cent bonds lost nothing by exercising the privilege of conversion and gain one-fourth per cent interest per annum. Holders of 4 per cent bonds should not wait until the last moment to exercise the privilege of conversion but proceed to do so promptly. Delay will result in overburdening the banking institutions of the country and the treasury department by making it necessary to handle all conversions at the last moment, and may result in the loss of the privilege of conversion altogether.

"Holders of coupon bonds are strongly advised to request issue of registered bonds in order to protect themselves against the risk of loss, theft and destruction of their bonds.

"Official Department Circular No. 114, with forms of application, has been distributed to Federal Reserve banks and banks and trust companies throughout the United States. These institutions are asked as a matter of patriotic service to assist bond buyers in exchanging 4 per cent bonds for 4 1/2 per cent bonds and in registering their bonds."

WASHINGTON, Sept. 17.—The house has rejected amendments to the revenue bill designed to exempt salaries of the president, federal judges and state, municipal and county officials from federal income taxation.

BRITAIN'S LIQUOR BILL HIGHER BUT LESS INTOXICATION

LONDON, Sept. 17.—Before the war the people of this country spent \$800,000,000 a year for drink. Now they spend \$1,200,000,000. Nevertheless there is not half the drunkenness in these war times that there was in 1913. Heavy taxation to provide war funds accounts for the public's increased drink bill, not further indulgence. In fact, excessive drinking has declined more than 80 per cent, and there has been an enormous gain in national efficiency.

All this has come about, Lord D'Abernon, chairman of the liquor control board, told the Associated Press, as a result of the war regulations introduced by the government.

"There is great ground for hope," he said, "that the progress made toward temperance under war conditions won't be lost, that it will be continued by post-war action along lines similar to the restrictions now in force."

Such action must come, if taken, from parliament. The life of the present regulations will terminate one year after peace has been declared. According to Lord D'Abernon, it is certain that the country never will go back to pre-war conditions.

The board's regulations limiting the hours for the sale of liquor, cutting down the alcoholic content of both spirits and beer, and abolishing treating were taken to rather kindly, on the whole, in Lord D'Abernon's opinion.

BRAZIL CANCELS LICENSES FOR GERMAN INSURANCE

RIO DE JANEIRO, Monday, Sept. 16.—The Brazilian government has cancelled the licenses of German insurance companies.

AS YOUNG AS YOUR KIDNEYS

The secret of youth is elimination of poisons from your body. This done, you can live to be a hundred and enjoy the good things of life with as much "pep" as you did when in the springtime of youth. Keep your body in good condition, that's the secret.

Watch the kidneys. The kidneys and digestive organs are the main causes. The kidneys filter and purify the blood. All the blood passes thru your kidneys once every three minutes. They strain or filter out the impurities. That is their work. Keep them clean and in proper working condition and you have nothing to fear. Drive the poisonous wastes and deadly uric acid accumulations from your system. Take Gold Medal Haarlem Oil Capsules at intervals and you will always be in perfect working order. You will feel strong and vigorous. Nerves and muscles will be elastic and your face will radiate youth and health. Gold Medal Haarlem Oil Capsules are imported direct from the laboratories at Haarlem, Holland.

They are not a patent medicine, but a guaranteed remedy which has been used by the sturdy Dutch for over 200 years and which has helped them to develop into one of the strongest and healthiest races in the world. Get them from your druggist. Do not take a substitute. In sealed packages—three sizes. Adv.

GAGNON LUMBER YARD

All kinds of rough and dressed Lumber. Specialties: Dimension stuff, Finishing Lumber, shingles, Sash and Doors, Roofing Paper, Fruit Boxes. Buy Jackson County Products. Place orders now for Fruit Boxes. New Shed, 113 S. Front St., Medford.

Phone 850.

Clubbing Rates

Medford Mail Tribune and Crescent City Courier. Medford Mail Tribune (Daily) \$5.00 Crescent City Courier (Weekly) 2.00 \$7.00 Clubbing rate, \$6.00. Medford Mail Tribune (Weekly) \$1.50 Crescent City Courier (Weekly) 2.00 \$3.50 Clubbing rate, \$2.50.

CRATER LAKE

Hotel and Auto Rates

Board and lodging, per day (tent) \$ 3.25 Board and lodging, per day (Lodge) 3.75 Board and lodging, per day with hot and cold water.. 4.25

Auto Stage Fare, 12-passenger White

Medford to Crater Lake and return 15.00 Kirk to Crater Lake and return 6.00 Klamath Falls to Crater Lake and return, via Kirk 9.30 Medford to Kirk or the reverse via Kirk 10.50 Medford to Klamath Falls or the reverse, via Kirk. 12.15 Auto stage leaves Medford, Holland and Nash Hotels at 9:00 a. m. Leaves S. P. Depot 9:40 a. m. For further information phone Crater Lake Motor Company, Court Hall, local manager.

Crater Lake Hotel Company

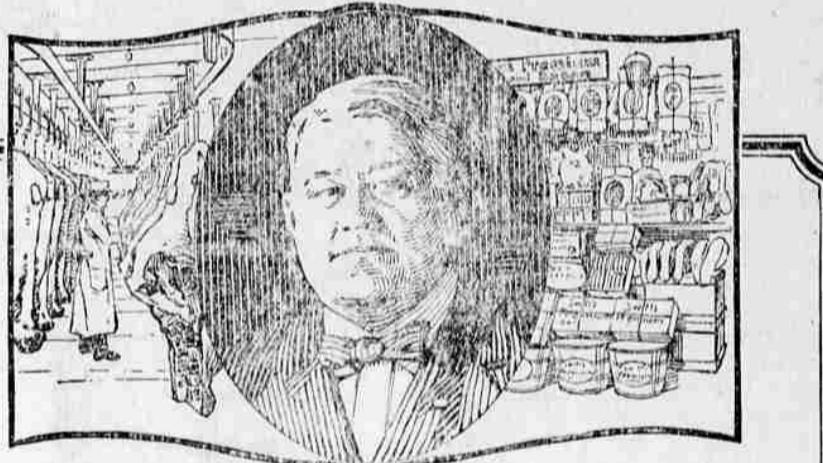
WESTON'S Camera Shop

The Only Exclusive Commercial Photographer in Southern Oregon.

Negatives made any time or place by appointment.

Phone 147-J. We'll do the rest.

J. B. PALMER, Medford



The Branch House Man

This is one of the Swift & Company Branch House Men.

They are all pretty much alike in the way they feel toward their work—and that is what this ad is about.

They know that most people couldn't get such good meat promptly and in good condition if it weren't for the branch houses of which they are in charge.

They know that the branch house is one of the most important links in the chain of preparing and distributing meat for a nation.

They know that Swift & Company must have its branch houses run at the highest notch of usefulness; that even a Swift & Company branch house won't run itself, and that it is up to the branch house man to run it properly.

Any branch house man who doesn't see his work in this light is transferred to some other place with Swift & Company to which he is better adapted.

They are picked men, these branch house men. Every time you sit down to a steak or chop, or cut of roast, you can give a grateful thought to the whole crew of them.

And remember, in a general way, that everything that makes life smoother and more convenient for you is the result of the thoughtfulness and effort of a lot of people of whom you have never heard.

Swift & Company, U. S. A.

