

### CAMPAIGN FOR ROAD BOND ISSUE IN FULL SWING

The campaign for the \$6,000,000 road bond election is in full swing. The apathetic feeling which existed in the early part of the campaign has been overcome by a greater interest in the movement. This can be attributed to the better understanding by the people as to the bond issue.

Much criticism was made as regards the excessive expense of constructing highways in the past in the different localities of the state. This in a great measure has been explained by the fact that in this case as with all other enterprises the initial work generally carries the experimental expense with it. This is not necessary any more and the construction of a mile of highway will now be done at a price consistent with such work at a figure similar to the cost of road construction in the greater populated states.

Furthermore there is now a federal check on all overcharges as provided for in the federal act by the appropriation of \$75,000,000 which is to be expended for highways in the United States in which the states share on a fifty-fifty basis, which provides that the secretary of agriculture may, in his discretion, from time to time, make payments on said construction as the same progresses, but these payments, including previous payments, if any, shall not be more than the United States' pro rata part of the value of the labor and materials which have been actually put into said construction in conformity to said plans and specifications; nor shall any such payment be in excess of \$10,000 per mile, exclusive of the cost of bridges of more than 20 feet clear span. The construction work and labor in each state shall be done in accordance with its laws, and under the direct supervision of the state highway department, subject to the inspection and approval of the secretary of agriculture and in accordance with the rules and regulations made pursuant to the act.

The sum fixed by the government, namely, "not to exceed \$10,000 per mile," are roads from 20 to 30 feet wide. While the width of the roads is at the discretion of the state highway commission it is understood that the major portion of the total mileage will be roads from 10 to 12 feet wide, thereby reducing the cost materially, giving the assurance that the \$6,000,000 appropriation bond money will complete the mileage as contemplated by the state highway commission.

### OFFICIALS PRAISE FEDERAL BUILDING

The visiting United States officials who are in Medford this week at the federal court session have much praise for Medford's new federal building in its entirety but especially for the court room and offices in connection therewith.

"I am very much pleased with the court room and its appointments and the offices and their arrangement," said United States Judge C. E. Wolverton of Portland. "While I have been in more magnificent court rooms—ones with marble walls and elaborate decorations, yet I have never presided in a court room that I liked better than this one, and in fact have been in very few that I have liked as well.

"The most striking feature is its splendid acoustic properties. Why, the lawyers, witnesses, etc., talking in ordinary tones can be heard perfectly. It's a real pleasure and comfort to preside in such a room. The court room in the new federal building at Pendleton, which is almost a duplicate of this building, also has splendid acoustics. The court room there is very much the same as here except that your court room seems somewhat larger."

### FOOD MANIPULATORS PRONOUNCED TRAITORS

CHICAGO, May 10.—Members of the Chicago Butter and Egg board were addressed today by Carl Vrooman, assistant secretary of agriculture, who told them that any one who manipulates food prices in the present crisis is a traitor to his country and should be punished as such. "I appeal to you to support the government in its efforts to control supplies for the best good of all concerned," he said.

### INJURIOUS EFFECT OF OIL SMUDGE UPON VEGETATION

BY DILLON R. HILL. The fact that dense smoke is hurtful to vegetation has been proven time without number, and the evidence of it is obtainable in great volume. The government has issued bulletins on the subject, citing instances observed by scientific men; and the Iowa experiment station has another in circulation, showing the indisputable injury to orchard and garden by smoke in the factory districts.

And yet, because of the fact that the fog is known to be a preventive of frost injury, many people assume, without investigation, that it is because the sun rays are prevented from striking the tender plants and buds directly. As a matter of scientific fact and deduction, the super-saturated atmospheric condition is the source of salvation of the crops from frost.

**Prolongs Frost Danger.** The presence of a heavy cloud of smoke over the orchards serves only to prolong the existence of the frost into later hours of the morning, intensifying its degree and giving it opportunity for greater harm to the buds and bloom; for, when the wind finally blows the smoke away, suddenly admitting the direct sun rays to the frost, the damage is done quickly and more severely; whereas, the degree of warmth in the rising sunbeams is much less and serves to dispose of the frost more gradually and less harmfully on that account.

Lack of careful thought has caused many fruitists to reach false conclusions as to the cause of fog protection from frost injury. Likening the smoke's resistance of sun rays to that of the fog, they reason that the two are similar in action, when, as a matter of fact, there is no similarity of action or effect.

**Another Effect.** The spring start of fruit and other trees is made on stored plant food which is the excess of the trees' daily need during the previous growing season. All bud development and growth, it is well known, are made on energy derived from this food until the young leaves are well out. If these leaves are rendered inactive or are stunted in growth by the sooty deposits, the period of growth on stored food is prolonged until new leaves can be pushed out, thus causing a heavy drain on the reserve of the tree. If this condition is prolonged over a period of years, a greatly weakened tree is sure to be the result.

Thus, it will be seen that the danger from the use of oil smudge may be traced from every possible angle.

**Cannot Escape It.** No volume of false philosophy will save the orchardist from these dangers. He cannot escape the injury by refusing to see it. The first and most important feature of the oil smudge damage is to the fruit buds and bloom. The second is to the tender wood fibre of the tree boughs and, finally, to the tree itself. Each year's use of it adds to the damage done the preceding year. The harm is cumulative until, like any other slow process of death, the orchard passes into early decay.

There is not a farm product that can escape the positive injuries of the oil smudge. There is not a farm animal that does not suffer from its use. It injuriously affects the cows and the milk product; the pigs and the poultry. It is an inexcusable mistake and cannot be placed in any other category. Scientists are discovering this fact in every locality where the oil smudge is used. Its absolute elimination is the only remedy.

### 128 AMERICANS HELD PRISONERS IN GERMANY

WASHINGTON, May 10.—That 127 Americans still are held prisoners in Germany, probably removed from captured armed merchantmen, was revealed today at the state department. It is assumed that the men were brought to Germany by raiders operating in the south Atlantic.

### SINN FEINER ELECTED BY IRISH TO COMMONS

LONDON, May 10.—Joseph McGuinness, a Sinn-Feiner, has been elected to the house of commons at the special election held to fill the vacancy for the southern division of Longford county, Ireland. His majority was 37 over Patrick McKenna.

### "SEPTEMBER MORN," PAGE, MAY 11TH MANY PROTESTS TO WAR TAX BILL REACH CONGRESS



The cast of principals to be seen in the dancing festival, "September Morn," coming to the Page theatre, Friday, May 11, includes several names which have already been distinguished in our best light operas. Ruth Wilkins, in the role of "Argentina" whose clever dancing is the talk of the season, played leading roles in "Louisiana Lou," "The Goddess of Liberty" and "The Military Maid." Maud K. Williams, playing "Mrs. Storm" is well remembered in Henry W. Savage's musical comedy "The Prince of Pilsen" and the famous Boston Opera company. William Moore, in the leading comedy role of "Rudolph Plastric" was seen in "The Red Mill," "The Heart-Breakers" and for several seasons in vaudeville. Other prominent members in the cast are: J. J. Patton, James Baber, Leslie Jones, Billy Murphy and a smart chorus of stunning show-girls.

### LET FRENCH ATTACK THEIR OWN OFFICERS

BERLIN, May 10.—An official statement today says: "As reprisal for the placing of a German general staff and 15 officers on French hospital ships in the Mediterranean, the German authorities have placed twice this number of French officers of corresponding rank at points in the western industrial districts which are especially subject to aerial attack."

### SECRET SESSION OF PARLIAMENT

LONDON, May 10.—The parliamentary circles were particularly interested in today's secret session of the house of commons, at which many questions uppermost in the public mind were discussed. Colonel Winston Spencer Churchill, formerly first lord of the admiralty, was the first speaker. The secret session probably will continue over Friday.

### COTTAGE CHEESE RANKS HIGH AS MEAT SUBSTITUTE

WASHINGTON, May 10.—Cottage cheese is one of the important meat substitutes, say specialists of the U. S. department of agriculture. It contains a larger percentage of protein (the chief material for body building) than most meats and furnishes this material at a lower cost. In every pound of cottage cheese there is about one-fifth of a pound of protein, nearly all of which is digestible. Meats, on the other hand, usually contain less protein and besides have a certain waste, such as bone and other inedible material. A pound of cottage cheese daily would supply all the protein required by the ordinary adult engaged in sedentary occupation.

The following table shows that cottage cheese, obtainable at from 12 to 17 cents per pound is much cheaper than most meats in furnishing protein for the diet.

|  |
|--|
| 1.27 pounds of sirloin steak.  |
| 1.09 pounds round steak.   |
| 1.37 pounds chuck rib beef.  |
| 1.52 pounds fowl.  |
| 1.46 pounds fresh ham.   |
| 1.44 pounds fresh ham.   |
| 1.58 pounds loin pork chop.  |
| 1.31 pounds hind leg of lamb.  |
| 1.37 pounds breast of veal.  |
| In addition to protein, energy for performing body work must be furnished by food. As a source of energy also cottage cheese is cheaper than most meats at present prices. The following table shows the comparison when energy is considered. |
| On the basis of energy supplied, one pound of cottage cheese equals:   |
| 8 1-3 ounces sirloin steak.  |
| 11 1-4 ounces round steak.   |
| 11 1-4 ounces chuck rib beef.  |
| 10 3-4 ounces fowl.  |
| 5 1-2 ounces fresh ham.  |
| 5 ounces smoked ham.   |
| 6 ounces loin pork chop.   |
| 7 1-3 ounces hind leg of lamb.   |
| 12 3-4 ounces breast of veal.  |

### HAMBURG ABANDONS HOPE OF ANTWERP

AMSTERDAM, May 10.—Hamburg merchants indulge in no hopes that Antwerp will pass under German control, according to the Hamburg papers. At a meeting of the leading business men of the port, called for the discussion of a canal project, a resolution was adopted condemning the proposition to build a canal from the Main to the Danube. Herr Mathies, president of the Hamburg chamber of commerce, said that such a canal would merely profit Rotterdam and Antwerp, "whose harbors were not German and never would be German."

The meeting adopted a resolution urging the government to build a canal from the Elbe to the Danube with the greatest speed possible.

### What Ails You?

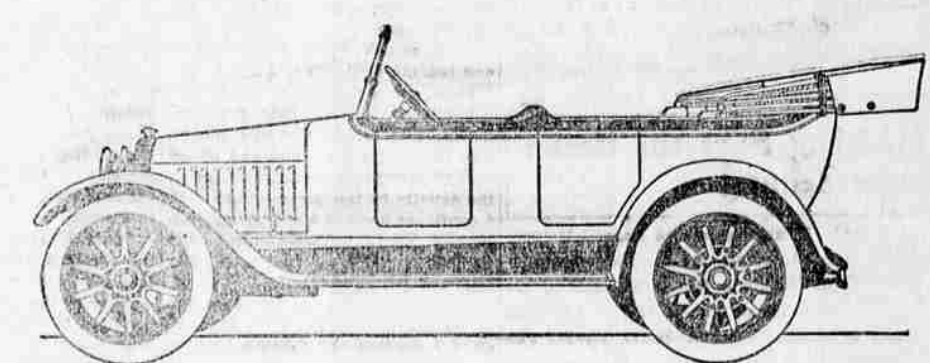
Have you become run-down, weak, emaciated, pale after a long siege of colds? Does the skin show that the blood is thin and watery? Spring is the time when vitality is at its lowest ebb—clean house now—by ridding the body of its accumulated poisons. Refresh the blood with a stimulating tonic.

Dr. Pierce's Golden Medical Discovery, free from alcohol or narcotics and extracted from roots and herbs with pure glycerine, banishes from the blood all poison and impure matter. It dissolves the impure deposits and carries them out, as it does all impurities, through the Liver, Bowels, Kidneys and Skin.

If you have indigestion, sluggish liver, nasal or other catarrh, steady nerves or unsightly skin, get the "Discovery" to-day and start at once to replace your impure blood with the kind that puts energy and ambition into you and brings back youth and vigorous action.

Sold by dealers in liquid or tablet form; or send the trial package of tablets to Dr. V. M. Pierce, Buffalo, N. Y.

**MOTHERS OF OREGON.**  
Albany, Oregon.—"At one time I was weak and nervous; had headache and backache; liver was sluggish, and I was troubled with constipation. I needed a tonic—a constitutional builder. A friend told me about Dr. Pierce's Golden Medical Discovery. I took it and it built me right up, gave me new strength, put my liver in good shape, and helped me in every way."—Mrs. ELLEN DODELE, 1118 E. 2nd Street.



Chalmers 7-Passenger Touring Car—Price \$1350 Detroit

## Chalmers Sensational Run Sets New Motor Car Standard

A Chalmers on March 26-27 set a new high mark in motor car history. On that date was established a standard in city traffic performance that promises to endure. To cover 536.8 miles through dense Chicago traffic in 24 hours is no mean feat. To do it with a stock 7-passenger touring car, carrying 4 passengers, on high gear only, without motor stop, and making 14 miles to the gallon of fuel is a superlative performance.

Chalmers accomplished the feat with ease. It did it because of the quality of its motor, the excellence of its design, the thoroughness with which it is built. Thus is proven the flexibility that a motor car owner of today demands. Thus is insured that economy that appeals in this day of high cost of gasoline. Thus is demonstrated the ability of a builder like Chalmers to produce a car of superlative merit at a price far below what is necessarily asked by manufacturers of a limited output.

The conclusion is inevitable—Buy a Chalmers

|                                       |   |                                     |
|---------------------------------------|---|-------------------------------------|
| Touring Car, 7-passenger . . . \$1350 | Touring Sedan, 7-passenger . . . \$1850 | Limousine, 7-passenger . . . \$2550 |
| Touring Car, 5-passenger . . . 1250   | Roadster, 3-passenger . . . 1250        | Town Car, 7-passenger . . . 2550    |

(All prices f. o. b. Detroit. Prices subject to change without notice.)

## A. W. WALKER AUTO CO.



### Woods Lumber Co.

### BEST SEEDS That Grow

We have a choice line of Garden Seeds, including the Famous Burpees in packages and bulk. 59 varieties of Spencer's Sweet Peas.

### Broadley

The Medford Florist and Seed Man  
Phone 872.

### Hotel Hoyt

Sixth and Holt Streets, near depots, Portland, Ore. Fireproof, newly decorated. Rates 75c to \$2.00. L. W. Himes, Manager.

### WESTON'S Camera Shop

208 East Main Street, Medford  
The Only Exclusive Commercial Photographer in Southern Oregon.  
Negatives Made any time or place by appointment.  
Phone 147-J.  
We'll do the rest.  
E. D. WESTON Prop.