

AGREEMENT IN O. C. LAND GRANT HELD DOUBTFUL

Attorney W. I. Vawter has returned from Salem, where he attended the Oregon-California land grant conference, and issued the following statement:

Jackson county was represented at the conference by W. C. Leever, E. V. Carter, W. S. Crowler and W. I. Vawter.

The first day was given up to addresses. Among others that spoke was Senator Charles W. Fulton, the burden of his speech being to the effect that the Oregon & California railroad lands were a grant to a corporation in precisely the same manner as to an individual; that the government had no right to convert them into a national forest or have them re-transferred to the public domain in any way.

The burden of the address of the attorney general, George M. Brown, was to the effect that the lands were subject to taxation in all respects as privately-owned lands, and that the railroad company in withholding payment of taxes was just as much subject to being penalized for the grant lands as an individual would be for his private holdings.

The railroad company was represented by E. F. Dunne, who very capably represented his client, his contention being that his company owned the lands, and the decision of the supreme court of the United States placed only two restrictions on their holdings, and with the exception of these two restrictions their title was absolute, namely: That the company was not to sell to exceed 160 acres to any one purchaser at a price not to exceed \$2.50 an acre, and that the purchaser must be an actual settler.

The final result of all the discussion and deliberation was on the second day. The conference passed a resolution that it was the sense of the conference that the congress of the United States shall define who is an actual settler under the terms of the O. & C. land grant acts and what shall be considered an actual settlement, requiring the railroad company to perform the terms and conditions of the act, and also a further resolution that the people of the state of Oregon objected to any further forest reserve increase and that congress forthwith and as speedily as possible provide for the immediate sale of the railroad grant lands in quantities not to exceed 160 acres to an individual at a maximum price of \$2.50 an acre. This resolution was practically adopted unanimously.

Then it was decided that at a future date to be named that a committee from the railroad company shall meet with a committee composed of Governor Withycombe and others for the purpose of seeing whether or not the railroad company and the state of Oregon can agree upon a policy to present to congress. I can't say how soon that meeting will be called.

I have no faith that the representatives of the railroad company and the representatives of Oregon can get together, as I think the railroad company will insist upon certain rights which cannot be conceded by the state at this time. Among other things claimed by the railroad company is that it is not required to sell at any definite time in the future, but may hold the lands as long as it sees fit. Another contention by the company is that it owns the timber absolutely, with the right to cut the timber from said land and remove the same at any time it sees fit. This contention was made by its astute counsel, E. F. Dunne, notwithstanding the supreme court in its decision enjoined the railroad company from cutting any timber from the lands whatsoever.

Just how favorably the resolutions adopted by the conference will be received by congress can only be a conjecture. It will be proper to add that the interior department at Washington was represented by Clay Tallman, general land commissioner, and a paper was read from Chief Forester Graves.

VILLA'S ARRIVAL AT JUAREZ FORECASTED

EL PASO, Tex., Sept. 20.—The arrival of General Villa at Juarez, the border town opposite here, was forecast today by passengers arriving on special trains who declare they passed his car en route.

The whole Villa army is apparently being transferred to Sonora state via Juarez and Casa Grandes, they said.

Thirteen troop trains are reported stalled for coal or water between Chihuahua City and Juarez. Troop and supply trains arriving yesterday were routed through 40 Casas Grandes today.

GIANT WAR BIPLANES THAT FIRES TORPEDOES AS POWERFUL AS ONE THAT SANK THE STEAMSHIP LUSITANIA WILL BE USED TO BOMBARD KRUPP FIREARMS WORKS IN GERMANY

Built by Americans, It Is Now Being Assembled in Canada for Use of British Army—With Tons of Explosives It Will Be Able to Fly From Western Front to Berlin and Back

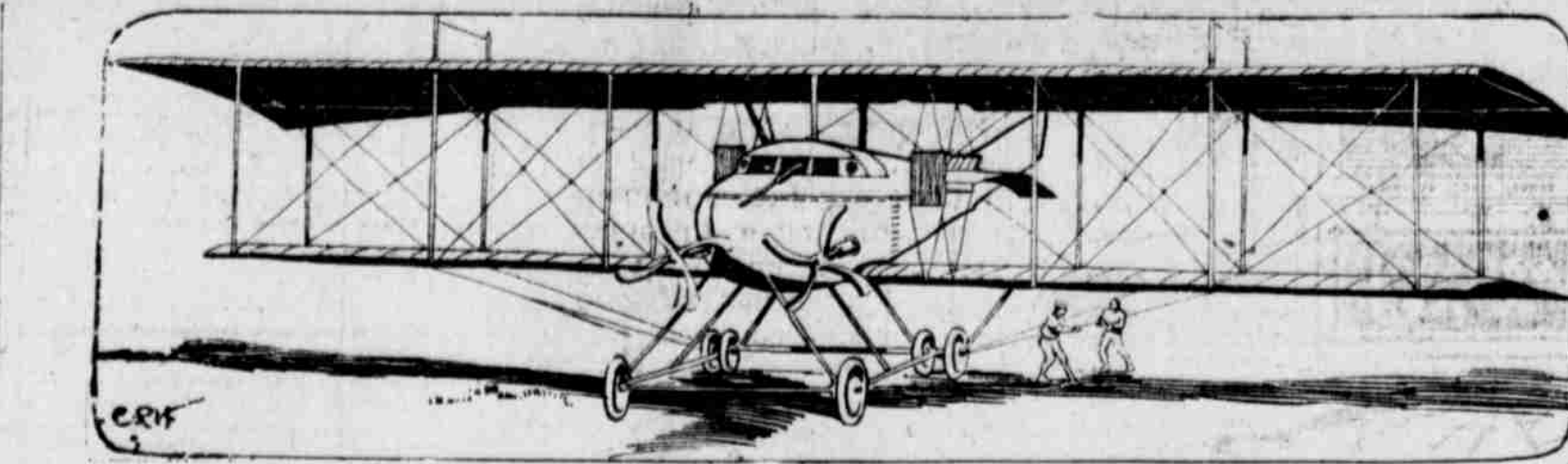
TORONTO, Sept. 20.—Think of shooting an aerial torpedo equal in power to that which sank the Lusitania, into the Krupp works at Essen, the Zeppelin factory at Friedrichshafen or the big German supply station and fleet at Cuxhaven.

The giant biplane that Glenn H. Curtiss is building here for the British army will be able to carry at least eight such projectiles in low flights invading German territory.

The bombardments which the British flying officers expect to accomplish with this machine would make previous aerial attacks on German posts seem like exhibitions of fireworks by comparison.

Up to this time 60 pounds has been the limit of weight of the bombs dropped from aeroplanes of the small military types in service on both sides. Three or four such bombs exhausted the carrying capacity of the machine when added to the weight of men and gasoline.

Among the bomb has been a matter for guessing. The accurate range finding and sighting instruments used by artillerymen on ship and shore have not come into use among



Giant Biplane That Glenn H. Curtiss and Assistants From His American Factory Are Building in Canada for the British Army. Sketched By Artist Higgins From Description of an Eye Witness. It Will Be Used to Shell the Krupp Works in Germany.

aviators, chiefly because the loads they carry have not permitted it.

Big Bomb Gun

One of the principal features of Britain's giant flying machine will be a bomb gun. Its details are a military secret, but I am informed that it has developed surprising accuracy. This gun makes it possible to hurl a projectile containing a 250-pound charge of gun-cotton at an enemy from a height of a mile or more.

The sights make allowance not only for distance, but for the speed of the aeroplane, which may reach 75 miles an hour, throttling down to 40 miles for landing.

A bomb dropped from an aeroplane traveling a mile a minute does not fall on the spot over which it is released. It touches the earth at a distance from the spot determined by the height at which it was dropped. It often falls a quarter of a mile away.

Built to lift a ton and a half besides its own weight, which is nearly two tons, the big biplane is expected

to have lifting capacity in explosives of a ton. This is in addition to the necessary fuel and oil for a flight of six hours and the weight of two or three men.

Fired Through Car Opening

The bomb tube is of light steel. It will be fired through an opening in the bottom of the aeroplane body or car. Compressed air will supply the "kick" behind the bomb as it leaves the aeroplane, and the force of gravity will take care of it thereafter as it plunges at the target.

The Curtiss aircraft gets its great lifting power from its enormous biplane wings, and two motors of 160 horsepower each, the largest in use on this side of the Atlantic. Its wings spread nearly 100 feet from tip to tip and measure nine feet across. The upper plane is nearly ten feet above the lower wings.

It is gratifying to American aviation enthusiasts that the biplane form invented by the Wright brothers has been found most effective for military work in the war largely owing to big lifting power.

Each of the motors swings a propeller on either side in front of the car.

The "big sticks," as the pilots call them, are each 9 1/2-28 feet long. They turn 1200 times a minute at full speed, and their tips cover about seven miles in that time.

Can Visit Berlin

If the airman wish to make a call on the kaiser at Berlin the lifting capacity of the big "pusher," as the constructors call it, will enable them to do so.

From the fighting line in France to the German capital and back again is little more than 900 miles, and would require about 1600 pounds of gasoline for the flight of twelve hours.

The aviators would still have room aboard with them for about 1000 pounds of gun cotton or dynamite bombs, to be presented with their compliments.

The big biplane is not designed for fighting other aircraft, but her vital parts will be protected by light armor that will resist rifle bullets. She may

also have a small rapid-fire gun at a safe distance.

Like the America

In appearance the giant will much resemble the America, built last year for the Rodman Wanamaker trans-Atlantic expedition and later sold to England. The success of the America brought the order for the big machine, which is nearly 30 per cent larger than the America and has twice her engine power.

Instead of a boat for use in alighting on the water the new craft has a wheeled carriage of massive frame, for use on land. Men and fuel tanks, explosives, instruments and guns will be sheltered in an inclosed body 45 feet long, resembling a torpedo in shape, set between the upper and lower planes.

The new aircraft now being put together here was designed and built largely in the United States by Americans, though assembled here.

Its success will aid in restoring the leading place in aviation to the United States, the birthplace of the new science.

BOSTON REPELS DETROIT IN FINAL GAME OF SEASON

FENWAY PARK, Sept. 20.—The Red Sox repulsed the last Tiger rush of the season today, defeating Detroit 3 to 2. Like preceding games of the series, it was one of wonderful fielding, in which Hooper was a particular star.

Ruth and Dauss pitched erratically. Ruth, however, was strong when needed up to the eighth inning, when his wildness resulted in filling the bases and Foster was called upon for relief. He struck out Vitt for the last out.

It was a "break" of the game which decided the contest for Boston. A ball bounding off Burns' shins in the sixth inning gave Lewis a triple, on which Speaker tied the score and Lewis scored soon after, although to the spectators it appeared that Catcher Stange had blocked him from the plate.

VILLA CLAIMS VICTORY OVER CALLES' FORCES

EL PASO, Tex., Sept. 20.—Villa sources today announced the defeat of forces of General Calles, Carranza commander at Paredes and in the Canyon De San Antonio late yesterday by General Maytorena's troops.

It was said four officers and 25 men were the Carranza losses at Paredes and eight officers and 18 men killed at Coyan De San Antonio. The Carranza forces are reported on the defensive at Divisadero, near Naco.

BRITISH INTERNE BARON VON BISSING

LONDON, Sept. 20.—Baron Von Bissing, half brother of General Von Bissing, German military governor of Belgium, and a naturalized British subject, after fighting for months for his liberty, has been interned. He was mysteriously spirited away today from his luxurious home in Kensington by detectives.

It is reported that the Islington workhouse will be the baron's domicile during the remainder of the war.

DISSOLUTION NOTICE

Notice is hereby given that the firm of Sharpe & Learned has been dissolved. All bills from September 11th are due and payable to I. W. Sharpe.

157 (Signed) A. LEARNED, JR.

ELKS PREPARE FOR DEDICATION OF NEW TEMPLE

Medford Elks have begun the work of preparing for the dedication of their new home in this city next Thursday and Friday, when visitors from all over the northwest will be in attendance. Flags and the lodge colors have been put in place on Main street. Already out-of-town guests are arriving. The largest part of the visiting delegations will arrive Thursday. They will be met at the depot and escorted to the new home.

Thursday noon lunch will be served for all guests. At 2 o'clock the cornerstone ceremony will be held. At 3 a reception to all guests will be held in the clubrooms. In the evening at 8:30 o'clock the dedication services will be held in the lodge rooms. At 9 o'clock the grand ball will be held at the Natatorium. This will be one of the social events of the season.

Friday morning the visiting Elks will be taken on an auto tour of the valley. In the afternoon at 2 o'clock the organization of the State Elks' Reunion association will be held. Special entertainment at the Star theater for the Elks will be given at 8 o'clock. At 8:30 the venison banquet and stag vaudeville entertainment will be given in the gymnasium of the Elks' temple.

For the occasion the Southern Pacific has inaugurated a fare of one and one-third from all points in the state. There will be large delegations from Klamath Falls, Grants Pass, Eugene, Roseburg, Salem, Albany, Portland and Rogue River valley points.

MORGAN WORLD'S RICHEST MAN

(Continued from page one)

awarded until the Morgan group has a generous supply of the stocks that are to be hoarded by munitions orders.

And this explains many of the mysterious movements in the stock market that have always been followed in the past nine months by the plunger of a fat war contract with the company whose stock was affected.

Creating Fortunes

There was, for instance, an automobile plant that had a junk pile made up of cars returned to the factory because of defects. Many of the prospective profits of the company had been buried in this junk pile. An agent of the allies saw this pile and offered \$3,000,000 for it. His bid was accepted right off the bat. Now the stock of this company, which was worth between \$9,000,000 and \$10,000,000 before the war, is quoted around \$33,000,000 on the stock exchange.

The president of another company looked at his paper one afternoon and

discovered the stock was shooting up. It puzzled him. The next afternoon the stock was up some more. It kept on rising for three weeks. Then he got an order from the Morgan house for certain munitions. The explanation was that Morgan's "insiders" knew the company was to get this war order and had been trading in the stock on margins, cleaning up probably a few millions.

Doesn't Know Extent

That's why Morgan doesn't yet know how much he's worth. Every upward rocketing of his war stocks, every increased profit of his mills, all the added tonnage on his railroads, every trip of his Atlantic steamships, adds to his mounting millions. And on top of this—

Fees! Fees! Fees! Morgan isn't the only magic money king this war is making. Schwab has cleaned up millions; Carnegie is count-

ing millions; every large holder of war stocks is seeing his fortune increased before his eyes. Gamblers in the stock market have netted untold sums by booming war stocks, following the Morgan lead.

But these millionaires are small fry by comparison. They don't count. J. P. Morgan transcends them all. He is the richest man on the earthly planet.

NOTICE TO CONTRACTORS

Sealed proposals will be received by the Rogue River Valley Canal company of Medford, Oregon, until September 25th, 1915, 1 p. m., for the construction of a reinforced concrete weir and bulkhead at Bear creek, Talent, Oregon. Plans and specifications may be obtained by applying in person to the chief engineer. The company reserves the right to reject any or all proposals. 156*

SENTENCE SISTER TO PRISON, GERMAN RULE

PARIS, Sept. 20.—A dispatch to the Havas News agency from Geneva says:

"Extraordinary precautions have been taken by the German military administration to prevent uncensored letters leaving Germany. A sister superior of the Order of Sainte Christianita at Metz was searched on her departure for a trip to Switzerland. Various letters intended for mailing outside of Germany were found upon her and she was sentenced to fifteen days in prison. A sister who had written one of the letters was sentenced to a month's imprisonment."

On Time for Breakfast

Ever know a real boy who wasn't on time for meals when there was something he liked? Boys are always ready for breakfast when they're going to have the

New Post Toasties

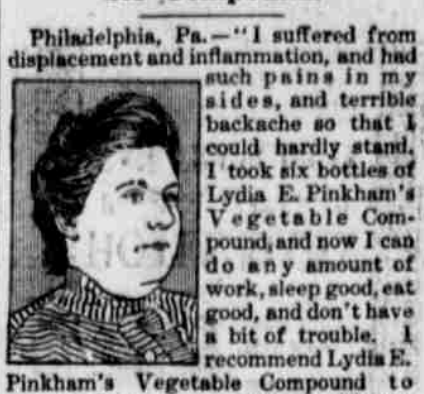
These delicious, new corn flakes bring to your table all of the delightful flavour of sun ripened corn. They're made by a new method that keeps them crisp and firm even after cream or milk is added—they don't mush down as other corn flakes do.

Notice the little pearl-like "puffs" on each flake—a distinguishing characteristic; try them direct from the package without cream or milk and you'll get the real corn flavour of

New Post Toasties

WOMAN COULD HARDLY STAND

Because of Terrible Backache. Relieved by Lydia E. Pinkham's Vegetable Compound.



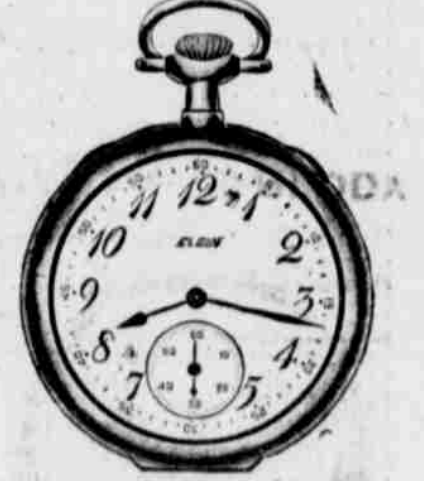
Philadelphia, Pa.—"I suffered from displacement and inflammation, and had such pains in my sides, and terrible backache so that I could hardly stand. I took six bottles of Lydia E. Pinkham's Vegetable Compound, and now I can do any amount of work, sleep good, eat good, and don't have a bit of trouble. I recommend Lydia E. Pinkham's Vegetable Compound to every suffering woman."—Mrs. HARRY FISHER, 1625 Doughton St., Nicetown, Pa.

Another Woman's Case.

Providence, R. I.—"I cannot speak too highly of your Vegetable Compound as it has done wonders for me and I would not be without it. I had a displacement, bearing down, and backache, until I could hardly stand and was thoroughly run down when I took Lydia E. Pinkham's Vegetable Compound. It helped me and I am in the best of health at present. I work in a factory all day long besides doing my housework so you can see what it has done for me. I give you permission to publish my name and I speak of your Vegetable Compound to many of my friends."—Mrs. ABEL LAWSON, 126 Lippitt St., Providence, R. I.

Danger Signals to Women are what one physician called backache, headache, nervousness, and the blues. In many cases they are symptoms of some female derangement or an inflammatory, ulcerative condition, which may be overcome by taking Lydia E. Pinkham's Vegetable Compound. Thousands of American women willingly testify to its virtue.

WATCHES AND Watch Repairing



MARTIN J. REDDY JEWELER
New Location, 212 E. Main
Phone 10 for Correct Time

UNION FEED AND LIVERY STABLE

FULL EQUIPPED LIVERY STABLE
AMBULANCE SERVICE
112 South Riverside
Phone 150
GAUNYAW & BOSTWICK
Proprietor.

Deep Well Drilling

Oil, gas, and water wells, 12, 13, 14-inch to 1500 feet. For prices see J. STEVENS, 238 North Central

"Nearest to Everything"

HOTEL MANX

Powell St. at O'Farrell
SAN FRANCISCO

Headquarters for Californians while visiting the Exposition.

Our commodious lobby, fine service, and homelike restaurant will appeal to you.

No Raise in Rates
\$1.50 Per Day Up

Management
Chester W. Kelley

"Meet me at the Manx"