

MANY PRIZES FOR OREGON EXHIBITS AT PANAMA FAIR

OREGON BUILDING, Exposition Grounds, San Francisco, June 23.—Grand prize for the "best, most complete and most attractive" exhibit in horticulture, together with a score of gold and silver medals for individual exhibits in horticulture; grand prize for the "best general display of forage products," including all unthreshed grains, together with three medals of honor, twenty-four gold medals, sixty-nine silver medals and eighty-nine bronze medals for various products of the soil! How is that for one week's awards for Oregon? From the noise being made by the six or eight states in direct competition, the Oregon winnings ought to be satisfactory to Oregonians. Oregon fruit is now officially recognized as the best and Oregon forage products will become as favorably known as the Oregon rose.

In the horticultural awards the Willamette valley was given a gold medal on Italian prunes. However, long before the jury announced its decision the public had decided that the Willamette prune was incomparably superior to any other to be tasted on the grounds.

When it came to processed fruits, the splendid display from the Rogue River valley—Medford, Ashland and Grants Pass—captured the gold medal and the admiration of every visitor to the exhibit. Douglas and Wasco counties and the Willamette valley were each given a silver medal for their fine displays of bottled fruits.

All of the awards in horticulture were made on the showing in the Palace of Horticulture alone, the magnificent displays in the Oregon building being excluded from competition. The winning Oregon exhibit, in charge of C. N. Ravlin, is a beauty, particularly delightful for its simplicity and the absence of the fussiness so common here. Each fruit section of the state contributed a full share to the big winning and is entitled to equal credit.

Oregonians on the exposition grounds are particularly pleased that the state captured the grand prize on forage crops. While Oregonians know that general farming represents the larger portion of the wealth of the state, and that the state is unexcelled in the production of superior forage and—rains, the apple and pear booster, more active than the rest, has made Oregon known most largely as a premier horticultural state. The magnificent showing in the palace of horticulture has made a tremendous impression, and in winning the grand prize has brought Oregon's larger side to the attention of the nation, which will now know that Oregon can raise hogs, feed dairy animals and beat the world in other things than fruit. This is particularly gratifying to O. E. Freytag, of Oregon City, who is director of agricultural exhibits.

Continuing the correspondent says: "It was after the artillery had been sent to the rear that the panic stricken troops began their flight. Wagon and supply trains blocked the roads. Men detached the horses from these vehicles and rode away on them, heedless of the crowd of soldiers of all arms, crowding back to the rear."

"Generals and colonels were helplessly carried away. Units were disbanded and the army became a mere mob. It was readily to be seen that catastrophe was unavoidable."

A report was given out today that since June 12, sixty thousand Russian soldiers and nine Russian guns have been captured.

BERLIN JOYOUS OVER CAPTURE OF GALICIAN CAPITAL

BERLIN, June 23.—News that Lemberg had been carried by Austrian and Hungarian troops was received today with great jubilation in Berlin. Throngs crowded the public squares and the parks, flags were displayed, bands played patriotic airs, extra editions of the newspapers were shouted on the streets and the church bells were rung. Everybody felt that another great step toward final victory had been gained.

A special correspondent of the Cologne Gazette telegraphed that the Russians before the general retreat began hurriedly sent back all the artillery they could move. This was done instead of endeavoring to cover the retreat of the artillery and saving all of it. Part of the cannon were useless on account of poor ammunition.

Further proof was furnished by an high explosive shell test against our battleship Puritan, about four years ago. This battleship sank as a result of one high explosive shell. Comparing the efficiency of this result with armor-piercing shells, I refer to the test against the battleship San Marcos. It took two days' bombardment to sink this old battleship; certainly with this number of high explosive shells they would have been sufficient to sink all our battleships.

If Turkey had a few modern 18-inch guns in proper places and sufficient shells containing 500 pounds of high explosives, the Anglo-French ships would have not even attempted to force the Dardanelles; this is, of course, only an assumption of mine, but it is a reasonable one.

The small sketch shows the fuse in detail. 1 indicates the body of the shell, 2 the bridge plug, 3 a separate shell which carries the fuse. The fuse comprises a thin metallic case (4), inclosing a detonating charge (5); 6 indicates the separating partition and 7 the detonating chamber. 8 indicates the fulminate and 9 a percussion cap, carried by a plunger (10), mounted in the stock (11), and retained in position by a break-pin (12).

The separating partition (6) is held against longitudinal movement by means of pins (13a), said pins are held in place by means of blocks of smokeless powder (14), which are held in place by plate (15), having an aperture (16), which permits the flames generated by the powder constituting the expelling charge of shell.

Under normal conditions the partition 6, which is of great thickness, intervenes between the priming charge and bursting charge, so that any accidental explosion of the fuse will be prevented from access to the large mass of high explosives, which they will destroy the fuse chamber, will not detonate the large masses of high explosives in the shell.

When the shell is being discharged from the gun, however, the flames of the expelling charge will have access to the powder blocks (14), and the latter will burn out, so that the locking pins (13a) will be free to move readily outward, under the influence of the centrifugal force.

It will be observed, only after the shell has passed clear of the gun, the pins (13a) are free to move readily outward, under the influence of the centrifugal force, and the partition (6) is thereby free, along with the fuse, and will move forward into the detonating chamber (7), and upon impact the said plunger will move forward and by the contact of the percussion cap (9), with the partition (6) will explode its charge of fulminate, whereupon the detonating charge (5) will detonate in turn the masses of high explosives in the shell.

It will be understood by this description and drawing that no accident can happen, even if an enemy's shot or shell should strike amidst many loaded shells of this system, and many shells have been used as targets for guns of various caliber to establish the absolute safety of this system. An accident can only happen by design, and not even through ignorance.

Mr. and Mrs. J. B. Alder are home from a visit to San Francisco and the fair.

HOW A BIG SHELL IS MADE; HOW EXPLOSIVE POWER IS ATTAINED

Louis Gathmann Proves Superiority of Explosive Shell Compared to Armor Penetrating Missile—They Are Safer to Handle, Too.

(This is the projectile with which the Germans are now shelling Dunkirk at a distance of twenty-five miles. Here is a timely explanation of its construction by its American inventor, Louis Gathmann.—Editor.) (By Louis Gathmann, noted expert on gunnery and explosives)

Unprofessionals have naturally great fear of the terrific power of high explosives; but experts know that by using a proper fuse they are much safer to handle than powder shells.

As conclusive proof of this I refer to the war between Japan and Russia; the latter had its fleet equipped with armor-piercing projectiles, while Japan had adopted high explosive shells, and in the sea of Japan, May 28, 1905, Japan literally destroyed the Russian navy, sinking 22 ships and capturing 14; only two out of 38 escaped.

Further proof was furnished by an high explosive shell test against our battleship Puritan, about four years ago. This battleship sank as a result of one high explosive shell. Comparing the efficiency of this result with armor-piercing shells, I refer to the test against the battleship San Marcos. It took two days' bombardment to sink this old battleship; certainly with this number of high explosive shells they would have been sufficient to sink all our battleships.

If Turkey had a few modern 18-inch guns in proper places and sufficient shells containing 500 pounds of high explosives, the Anglo-French ships would have not even attempted to force the Dardanelles; this is, of course, only an assumption of mine, but it is a reasonable one.

The small sketch shows the fuse in detail. 1 indicates the body of the shell, 2 the bridge plug, 3 a separate shell which carries the fuse. The fuse comprises a thin metallic case (4), inclosing a detonating charge (5); 6 indicates the separating partition and 7 the detonating chamber. 8 indicates the fulminate and 9 a percussion cap, carried by a plunger (10), mounted in the stock (11), and retained in position by a break-pin (12).

The separating partition (6) is held against longitudinal movement by means of pins (13a), said pins are held in place by means of blocks of smokeless powder (14), which are held in place by plate (15), having an aperture (16), which permits the flames generated by the powder constituting the expelling charge of shell.

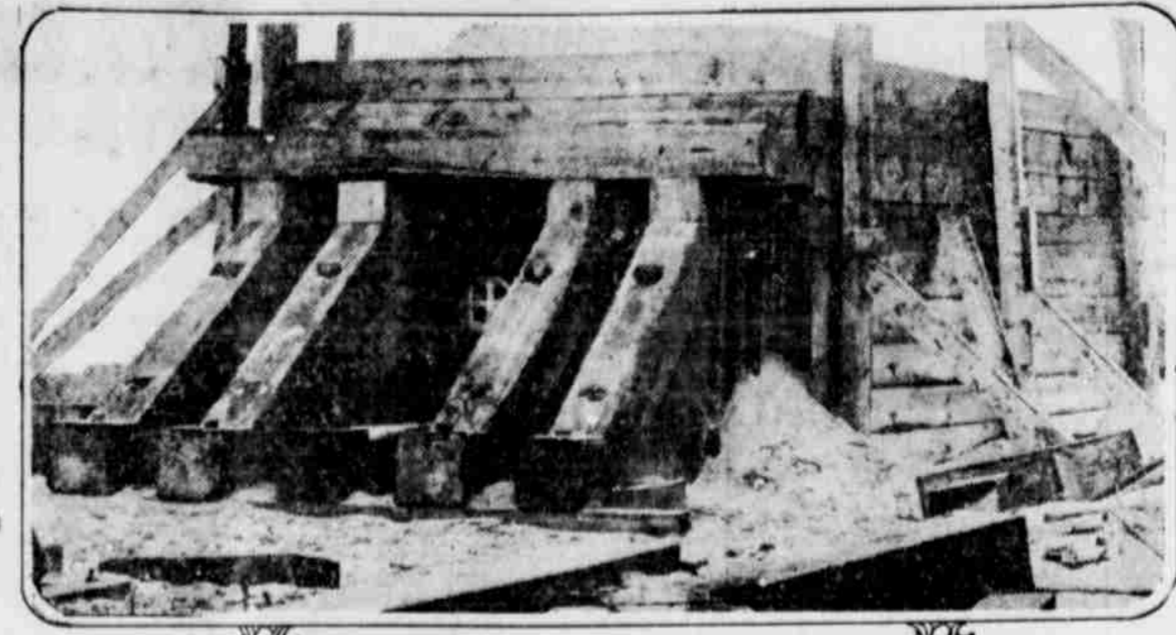
Under normal conditions the partition 6, which is of great thickness, intervenes between the priming charge and bursting charge, so that any accidental explosion of the fuse will be prevented from access to the large mass of high explosives, which they will destroy the fuse chamber, will not detonate the large masses of high explosives in the shell.

When the shell is being discharged from the gun, however, the flames of the expelling charge will have access to the powder blocks (14), and the latter will burn out, so that the locking pins (13a) will be free to move readily outward, under the influence of the centrifugal force.

It will be observed, only after the shell has passed clear of the gun, the pins (13a) are free to move readily outward, under the influence of the centrifugal force, and the partition (6) is thereby free, along with the fuse, and will move forward into the detonating chamber (7), and upon impact the said plunger will move forward and by the contact of the percussion cap (9), with the partition (6) will explode its charge of fulminate, whereupon the detonating charge (5) will detonate in turn the masses of high explosives in the shell.

It will be understood by this description and drawing that no accident can happen, even if an enemy's shot or shell should strike amidst many loaded shells of this system, and many shells have been used as targets for guns of various caliber to establish the absolute safety of this system. An accident can only happen by design, and not even through ignorance.

Mr. and Mrs. J. B. Alder are home from a visit to San Francisco and the fair.



View of target constructed to test the Gathmann high-explosive shell. The armor plate was of 16-inch nickel steel, supported by a structure of 12x14 inch oak beams and backed by 130 tons of solid earth. The circle with the cross-mark inside shows the point at which the shell was aimed. The shell fired against this plate was a 12-inch shell carrying 210 pounds of high-explosive detonated by the Gathmann fuse. The result is shown in the second picture. The backing, Gathmann claims, was stronger than anything possible to construct on the side of a battleship and yet the target was entirely destroyed.

RUSSIANS RETAKE THE LEFT BANK OF DNEISTER RIVER

GENEVA, June 23.—The Tribune prints the following despatch from Innsbruck, which purports to have been received from Czernowitz, Bukovina.

"The Russians have re-captured positions on the left bank of the Dneister lost on the 20th. An Austrian force trying to cross the Dneister at its confluence with the Swica was defeated with the loss of 1500 men and was obliged to retreat in the direction of Kallsch.

"At the cost of enormous losses General Pflanzer made a slight advance between the Stripa and the Dneister. The Russians are holding their own at Korpicee, inflicting severe losses on their adversaries.

"For the third time, an Austrian attempt to invade Bessarabia has been repulsed with heavy losses."

Smokers of TURKISH TROPHIES Cigarettes fifteen years ago — are smokers of TURKISH TROPHIES Cigarettes today!

Makers of the Highest Grade Turkish and Egyptian Cigarettes in the World

RED CROSS FUNDS FOR MEXICO EXHAUSTED

WASHINGTON, June 23.—All Red Cross funds available for famine relief in Mexico have been exhausted and today the society issued another urgent appeal for foodstuffs and money. Twenty thousand persons were reported as practically starving in Guerrero.

How desperate the food situation is even in Vera Cruz is said to be indicated by the case of a talented woman, 23 years a public school teacher, who was found begging in the streets for food. Another sister, well educated, was peddling soap.

PRESIDENT OFF TO SUMMER WHITE HOUSE

WASHINGTON, June 23.—President Wilson will leave at midnight for the summer White House at Cornish, N. H., not to return until July 6. He goes first to Roslyn, L. I., to spend tomorrow with Colonel E. M. House. Late tomorrow night he will depart for Cornish, where he expects to arrive Friday.

Direct telegraphic communication between the White House offices and Cornish has been arranged and the president will be in constant touch with Acting Secretary Lansing.

THAW TESTIFIES OWN BEHALF

(Continued from Page 1.)

staying in Manchester, N. H., you entertained friends and acquaintances and in turn were entertained by them?"

"That is right," replied the witness.

Thaw was asked to tell of the examination of his sanity made in Manchester by a federal commission in connection with proceedings to extradite him to New York. He named the members of the commission and told how it came to be appointed.

A physician representing a Pittsburgh bank had also come to see him in Manchester, said Thaw.

Banks Honored Checks

"This Pittsburgh bank honored your checks, did it not?"

"Yes, and the banks in New Hampshire, Canada and elsewhere," said the witness.

Mr. Stanfield then turned the witness over to the state's attorney, but Mr. Cook announced that he would not cross-examine at this time. Thaw was then excused, and with grave demeanor returned to his seat.

AUTO SERVICE FROM EAGLE POINT TO MEDFORD AND BACK

The undersigned will leave Frank Lewis' confectionery every day except Sunday for Medford with his auto at 1 o'clock p. m., arriving at 2 p. m. Leave Nash hotel, Medford, at 5 p. m., arrive at Eagle Point at 6 p. m. A part of the traffic is solicited.

S. H. HARNISH, Eagle Point, Ore

HEART OF PAINTED WOMAN AT PAGE

"The Heart of a Painted Woman" is a virile and powerful dramatic production, adapted from the original story of the same name. It was written especially for Mme. Olga Petrova, who plays the principal role supported by an admirable cast of well known players, and is suited to her brilliant dramatic powers. "The Heart of a Painted Woman" is in five parts, contains 200 scenes and was staged in the exact locality of the original work. This photo-play will be shown at the Page Theater Wednesday and Thursday.

LANSING SECRETARY OF STATE

(Continued from page one)

advisers if it would not be advisable to select a man who was more prominent and had probably performed greater service for his party.

Favored By Cabinet

From the first, however, practically all members of the cabinet have favored Mr. Lansing's selection, and it was understood that the president took the view that the character of the man was more to be considered at this juncture of international affairs than any other. Mr. Lansing was appointed secretary ad interim on Mr. Bryan's retirement. Under the law, his appointment is not permissible for thirty days. Mr. Lansing's ad interim designation would have expired early next month. His regular appointment, however, becomes effective at once. When congress meets his nomination will have to be submitted to the senate for confirmation in the regular way.

Get Ready for the 4th of July

—AT—

MANN'S

CENTRAL AVE., NEAR P. O. THE WOMEN'S STORE

\$2.00 WAISTS \$1.19	200 Women's, Lingerie Waists, all new styles, in plain and fancy, values up to \$2.00, sale price.....	\$1.19	\$2.50 WAISTS \$1.39	200 Women's New Tub Silk Waists, in plain, stripes and fancy figures, values up to \$2.50, sale price, each.....	\$1.39
----------------------	--	--------	----------------------	--	--------

HOT WEATHER DRESSES

Just received, a new line of Women's Wash Dresses, in voile, linen and organdies, sizes 16 to 42, splendid values at..... \$4.98, \$5.98 and \$6.98

CHILDREN'S WASH DRESSES

New Gingham Dresses for children, ages 6 to 14, worth 75c, on sale Thursday..... 48c

Children's Wash Dresses, sizes 6 to 14, beautiful styles, worth \$1.25, this sale..... 98c

NEW SKIRTS

We handle the famous "Kor-rect" Tailored Skirts, the best-fitting skirt made.

New Suspender Skirts, in black and white checks, on sale Thursday, each..... \$3.98

New Palm Beach Skirts, special..... \$4.98

New Palm Beach Suits, real \$15 grade..... \$8.98

Wash Petticoats, fast colors, each..... 69c

WASH GOODS SALE

New Floral Lace Cloths, fast colors, special, yard..... 10c

New Zephyr Gingham, worth 12 1/2c, special, yard..... 9c

40-inch Organdies, floral patterns, worth 35c, special, yd..... 25c

New Voiles and Organdies, worth 20c, sale price, yard..... 15c

36-in. and 40-in. Dress Linens, worth up to \$1.00 — sale price, per yard..... 39c

New Pleisse Crepe, for underwear, per yard..... 15c

HOT WEATHER UNDERWEAR

Women's Sleeveless Vests, all sizes, special, each..... 8c

Women's Union Suits, cheap at 35c, very special, a suit..... 25c

Women's Porous Knit Union Suits, special, a suit..... 65c

Children's Sleeveless Vests, all sizes, special, each..... 15c

Women's Crepe Night Gowns, very special, each..... 98c

Women's fine Lingerie Night Gowns, special, each..... 59c

Women's Comfy Cut Sleeveless Vests, special, each..... 15c

Women's fine grade Union Suits, worth 75c, special at, per suit..... 59c

Warner's Corsets

New Summer Net Model, all sizes, very cool for hot weather, per pair..... \$1.25

50 Warner's Corsets, discontinued models, worth up to \$2.00, sale price, pair..... 98c

Warner's Braisseries, new model, pair..... 59c

Warner's Braisseries, made of Cluny lace, worth \$1.50, special, pair..... 98c

10% Off On All Parasols 10% Off

200 Brand New Parasols, made in this season's latest shapes and colors, the best variety in the city, on sale Thursday at 10% off regular price.

Children's Parasols at 10c, 15c, 25c and 50c each.

Clark's O. N. T. Spool Cotton 7 for 25c at..... 10c

Sanitol Talcum Powder, can..... 10c

Snap Fasteners, card..... 2c

Lustre Cotton, ball..... 4c