

# NEGLECT BREEDS STUNTED BEINGS LONDON SLUMS

### Large Proportion of Englishmen Unfit for Soldiers, Due to Factory Life, Hence Army is Small, Says Charles Edward Russell, Who Tells of Effect of Poverty Upon Masses.

(By Charles Edward Russell, newspaper editor, magazine writer and economist, who is writing from the war zone exclusively for this newspaper.)

(Copyright, 1915, by the Newspaper Enterprise association.)

LONDON, May 5.—When all is said and done, the potent reason why Great Britain does not make an army like the army of Germany is because she hasn't the material to make it of. Here is the greatest lesson of all. She has the numbers but not the material.

The stalwart among her sons, by the thousands and tens of thousands, have gone to the war. Brave, vigorous of body, alert of mind, they will perform as valiantly as the young men of any other nation on earth. They are the children of sufficiency.

But that is all. What of the vast remainder?

So we come now to the heart of the matter to England's depressed nerve center and the sign of her great affliction.

### Why Not Take These Men?

Walk in London anywhere east of Aldgate; go over to Southwark; visit the great manufacturing districts of the Midlands or the north. Here are men and men and men, come, government; you want men. You cover the walls and fill the newspapers with insistent demands for men and more men. Well, look upon these endless swarms of men, thousands upon thousands of men, streets full of men, men well within the age limits of your demand. Here is army after army for you. Why don't you take them?

Why not? Well, this is why not. Listen, nervous, dull-eyed, with hollow chests, pallid faces, serawny forms—What! Will you make soldiers of these? Once, years ago, the recruiters tried that experiment with results well known in the secret history of the army. They will not try it again.

Traditionally, the British yeoman was the strongest man of his inches that went in shoe leather. While the nation slept on this tradition a profound revolution had taken place.

Up to 1849 the country had been largely agricultural. When the corn laws were repealed she ceased to be agricultural and developed into the greatest manufacturing nation in the world.

A vast army of producers gradually exchanged agricultural employment for life in the back alleys, dark courts, sub-cellars and attics of the crowded manufacturing cities.

Also they exchanged open-air life for the grinding monotony of mills, the fresh air of the fields for the stenches of slums, and the rough, hearty farm fare for tea, salt fish and jam.

### Swarm in Repulsive Regions

The second and third generations under these conditions furnish those strange beings that, inert and hopelessly inefficient, now live and swarm in the most repulsive regions of every British city.

They represent the price that England is paying for her neglect of her less fortunate.

They are not alone feeble in body, but equally feeble in mind. If you were to try to talk with some of them you would find that they do not understand you, nor could you well understand them. You would find in their rickety frames, horribly wrecked by a faulty industrial system, a mass of men apart and with only the rudiments of human intelligence. You would find, for instance, that some of them seem to have forgotten how to laugh, that they have almost no knowledge of passing events and the world about them, that they barely know there is a war. You would find that by day they creep out of their holes and by night creep back again like some dreadful animal. You would find that to get something to eat and to find some place to sleep constitute for these children of God and brethren of yours the horizon of life.

### Underfed a Majority in London

It is a horrible fact that in London the underfed and the ill-fed are in a majority—after all these centuries of civilization, here in civilization's center. If you were to go attentively along any of the streets you would see how true this is. The proportion of young men most plainly ill-nourished and the proportion of young

men revealing the stigmata of degeneracy are not less than appalling.

Furthermore, it is unfortunately true that the mill that produced these specters continues to operate. To this day a very large part of the toiling millions never get enough to eat, inhabit gloomy or unsanitary dwellings, work long hours at dreary employments and as a result are thin-blooded, small-boned and without ambition. And that is one reason why Great Britain has no such army as Germany's and will have none.

It was the aftermath of Boer war revelations that jolted the nation to some of these facts. Nobody should have been surprised; there had been warnings enough. For years the unheeded prophets had been pointing out that the conditions to which the majority were condemned were eating out the strength of the nation. There was no strength, they said, in the fortunes of a few, nor even in factories, ships and trade. The only asset of national strength was the physical well being and intellectual development of the masses. When these were neglected the nation was walking the sure road to trouble.

### Richest Nation is Poorest Nation

When the jar came and these words proved true there were investigations that showed startling facts. It appeared, for instance, to be literally true that what had been called the richest nation was in fact the poorest.

Of the total population of 42,000,000 it appeared that about 8,000,000 lived on the starvation line or below it, and of these 1,800,000 were in London. Poverty was so general and so acute that one person in every four must be buried at public expense; or in other words, as a pauper.

A census of the east end of London showed about 320,000 persons as members of families domiciled in but one room to a family, and that sometimes a cellar or sub-cellar.

Terrifying statistics were produced showing the rapid increase of insanity and disease among the submerged millions.

Further investigations proved that between the well-to-do castes and the toiling castes was a steadily widening margin of physical differences. The average height of the well-to-do was found to be almost three inches greater than the average height of the inferior castes; their chest measures, arm measures and leg measures were distinctly different.

The factory toilers were becoming a race of beings stunted and dwarfed.

### A New Kind of Human Nature

Society was producing a new kind of human creature, inferior physically, inferior mentally, without physical stamina and without the spirit of revolt, dull, sheep-like, submissive, unimaginative, weak and retrogressive.

Will you make soldiers of these? On the revelation of these appalling facts the government undertook remedies. It is on this account and this alone that we have had the accident compensation law, old age pensions, rudimentary reforms in land taxation, insurance against unemployment, the sudden and short-lived crusade for better housing for the poor.

For such a crisis as this, these things are too late and too little. The mass of poverty has not been relieved.

Therefore Great Britain's army after nine months of prodigious work has reached a total believed by optimists to exceed 2,000,000, against the 9,000,000 of Germany and the 7,500,000 that Great Britain ought to have.

But, you say, Germany, too, has undergone a great industrial development; Germany, too, has become a great manufacturing nation. Yet Germany shows no sign of physical breakdown.

Ah, yes. And that is the point. Great Britain, amid these changes, has held steadfastly to the policy of letting the toilers look out for themselves. Germany, under the inspiration of the astute Bismarck, has made its first concern the health and physical welfare of its toilers.

### Germany Careful of Her Masses

For thirty-five years Germany has been assiduously careful of these things. Compensation for accidents or disability, insurance against unemployment, old age pensions, pure food, sanitary dwellings, physical development and training are old stories in Germany.

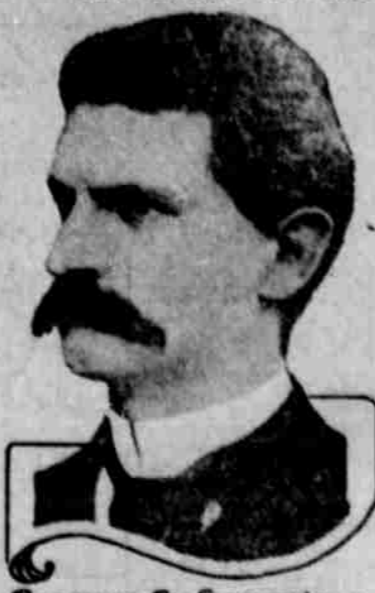
Hence she turns out as a capable army one to seven of her population and Great Britain turns out one to twenty-two.

Poverty is the deadliest foe. For years a nation may walk its way and disregard the enemy within. Then the test of war comes and it has for defense one in twenty-two of its population instead of one in seven.

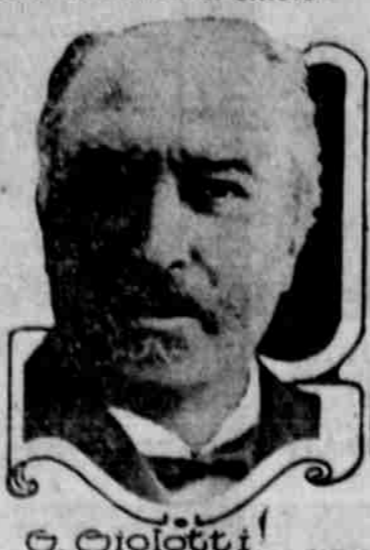
### A Reliable Hair Tonic

It is an easy matter to prevent diseases of the scalp by using Meritol Hair Tonic. It should be used regularly to keep the scalp free of germs, as these germs are the cause of the majority of cases of dandruff and later, baldness. We are authorized to guarantee Meritol Hair Tonic. Haskins Drug Store. Exclusive agency, prices 50c and \$1.00.

## MEN BEHIND THE THRONES IN THE ITALIAN CRISIS



Baron S. Sonnino



G. Giolitti



Prince Buelow

Baron Sidney Sonnino, again foreign minister for Italy, known as "the framer of Italian cabinets," is one of the men Prince Buelow, the Kaiser's envoy, is trying to influence against war. Sonnino has been a big political power in Italy and much pressure is being brought to bear on him, it is said, even to the extent of large offers, to prevent war. Greater than Sonnino in the estimation of the German nations, however, is G. Giolitti, former president of the ministry and still looked upon as one of the powerful men of Italy. It is intimated that the Germans and Austrians have tried to persuade him to obtain his old place as premier and avert war.

## MEXICAN CAPITAL STILL SHY OF FOOD

WASHINGTON, May 22.—Mexico City continues to suffer from shortage of food, especially corn. State department dispatches today said that when an attempt was made yesterday to distribute to 8000 people there was not a sufficient supply and about 250 fainted during the crush. Several demonstrations have taken place, the official dispatches say, and in one such yesterday a crowd invaded the chamber of deputies where a convention was in session and cried, "We are hungry."

## WEATHER BUREAU CHIEF TO VISIT HERE

Ben Sheldon has received a letter from Charles F. Marvin, chief of the weather bureau, accepting the invitation of the Commercial club to stop here and investigate first hand the conditions of the valley respecting frost warning service. It is hoped this visit will help materially in the valley's securing such federal cooperation as it needs for perfecting future service in this regard.

### CHICHESTER'S PILLS

THE DIAMOND BRAND  
Largest and Best  
SOLD BY DRUGGISTS EVERYWHERE

## ROGUE RIVER BANK THIEF ARRESTED BUT BREAKS JAIL

The thief who robbed the Rogue River bank five weeks ago was arrested in California, but sawed his way out of jail, according to information given to Chief of Police Hittson by a Pinkerton detective who passed through Medford this week for Portland. The suspect was held awaiting the arrival of the sleuth, but when he arrived the bird had flown.

The knowledge the police have of the arrest was given from the steps of a northbound passenger, and there was not much time for explanatory details except that a man arrested for vagrancy became talkative to a cellmate and boasted of his deed at Rogue River. The cellmate told the sheriff, who notified the Pinkerton agency. Meanwhile the desperado who threw ammonia in the face of Cashier Rosser became suspicious and made a successful break for liberty. Outside assistance is believed to have been given.

Pictures of the suspect were taken and copies will be mailed to the local authorities.

During the last week several robberies have occurred in San Francisco, wherein ammonia was used to subdue the victim, the drug being more effective and less dangerous than the old style way of hitting him over the head with a lead pipe or pumping lead into his anatomy.

### HOTEL STANFORD

MR. I. HARRIS, Manager and President  
250 KEARNY ST.  
Bet. Sutter and Bush

#### SAN FRANCISCO

A modern, fire-proof, up-to-date Hotel, located in the center of everything and on a direct line to the Exposition Grounds.

#### RATES

Detached Bath	Private Bath
\$1.00, \$1.50 single	\$1.50, \$2.00 single
\$1.50, \$2.00 double	\$2.00, \$2.50 double

150 Rooms of Solid Comfort—Every Convenience  
From Third and Townsend St. Depot, take car No. 15 or 16. From Ferry take Sutter St. car, get off at Kearny St., walk half a block North. Or take a "City" Bus direct to Hotel.

## GOOD YEAR AND REPUBLIC IRES

WE SAVE EXTRA COSTS AND TIME BY DOING OUR OWN ADJUSTING

### Crater Lake Motor Car Co.

Distributors for Southern Oregon  
16-18 S. Fir street. Medford, Oregon

## EXCURSIONS EAST VIA CALIFORNIA EXPOSITION

Low Round Trip Fares direct to eastern cities by the North Bank Road and Northern Pacific or Great Northern Railways.

### "NORTH BANK ROAD" WATER LEVEL RAIL. 26 HOURS OCEAN SAIL.

Portland to San Francisco

Same Time and Rate as All-Rail Meals and Berths Included in Fares

"North Bank Road" water level rail, 26 hours ocean sail, Portland to San Francisco.

SS. Northern Pacific sails May 23, 31; June 4, 8, 12, 16, 20, 24, 28. Steamer train leaves Portland 9 a. m.

Features of Palatial Steamship Service: De luxe suites with bath and shower; deck chairs, free; refreshments free at 10 a. m.; tea in palm room and buffet luncheon, free. Unsurpassed dining service. Write for folder.

R. H. CROZIER, Assistant Gen. Pass. Agent, Portland, Ore.

## \$5.50 MEDFORD to ROSEBURG and RETURN

Account

### Roseburg's Strawberry Carnival

May 21-22

Tickets on sale from all stations in Oregon May 21-22, with final return limit May 24.

FULL PARTICULARS FROM ANY AGENT OF THE SOUTHERN PACIFIC

John M. Scott, General Passenger Agent, Portland, Ore.

## PAGE WIRE FENCE

Is the choice of every careful fence buyer. You can see it along nearly every road and farm in Southern Oregon and Northern California.

WE HAVE THE RIGHT STYLE FOR YOU.

Our 12-bar 46-inch General Purpose Fence is a winner. It represents most value for the money. Will turn pigs, hogs, sheep and cattle. Every line wire is made double strength, stretches tight over rough and hilly ground. Gives you just what you need in fence service.

WE SELL SUPERIOR FENCE SERVICE AT THE RIGHT PRICE

### GADDIS & DIXON

"THE PAGE FENCE MEN"

MEDFORD, OREGON

# Chalmers Motor Cars

## Quality

The Chalmers Motor Company plant covers 30 acres; employs 4000 trained, skilled workmen

On this Rock-Quality-I mean to build my Business  
Hugh Chalmers Nov. 22 1907

Chalmers Models  
New Six-40 at \$1,400 Light Six-48 at \$1,650 Master Six-64 at \$2,400

Let your next Car be a Chalmers

PERRY ASHCRAFT Jr., Agent