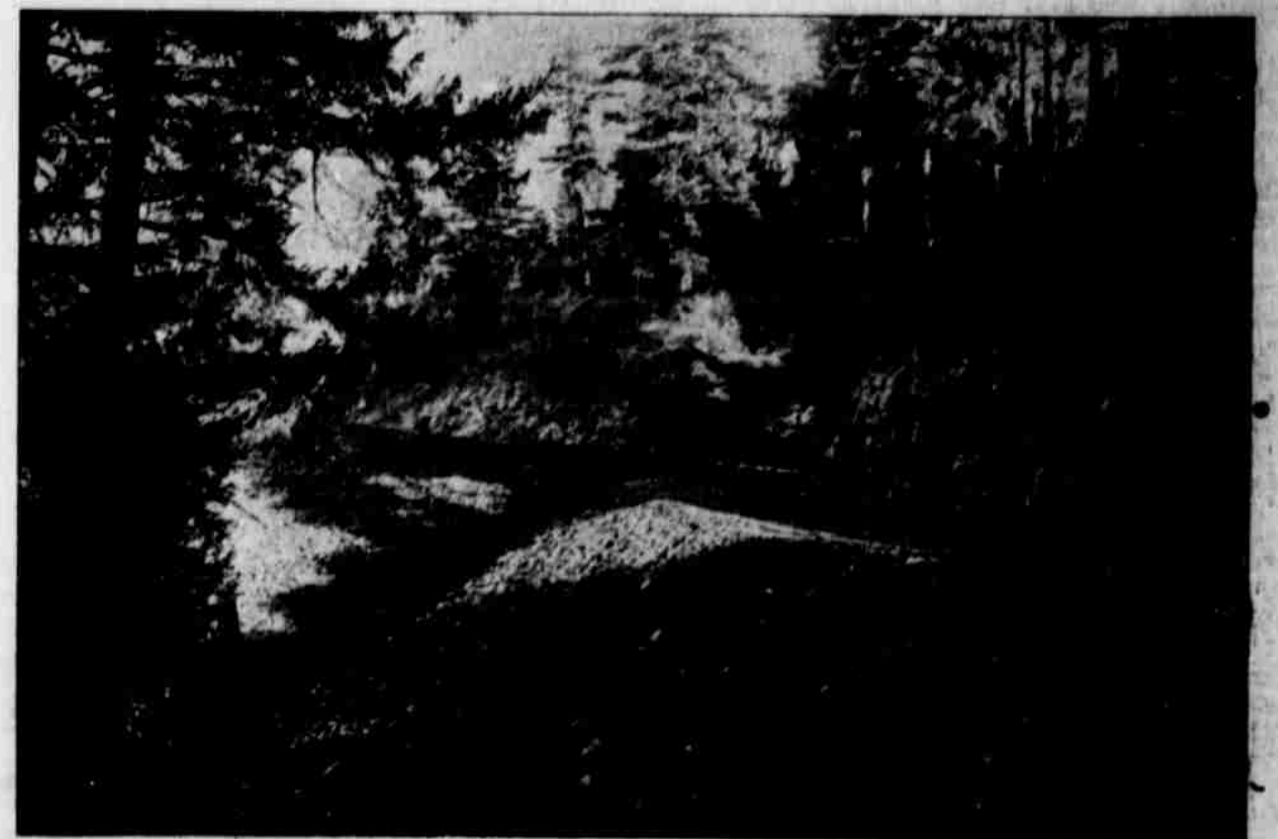
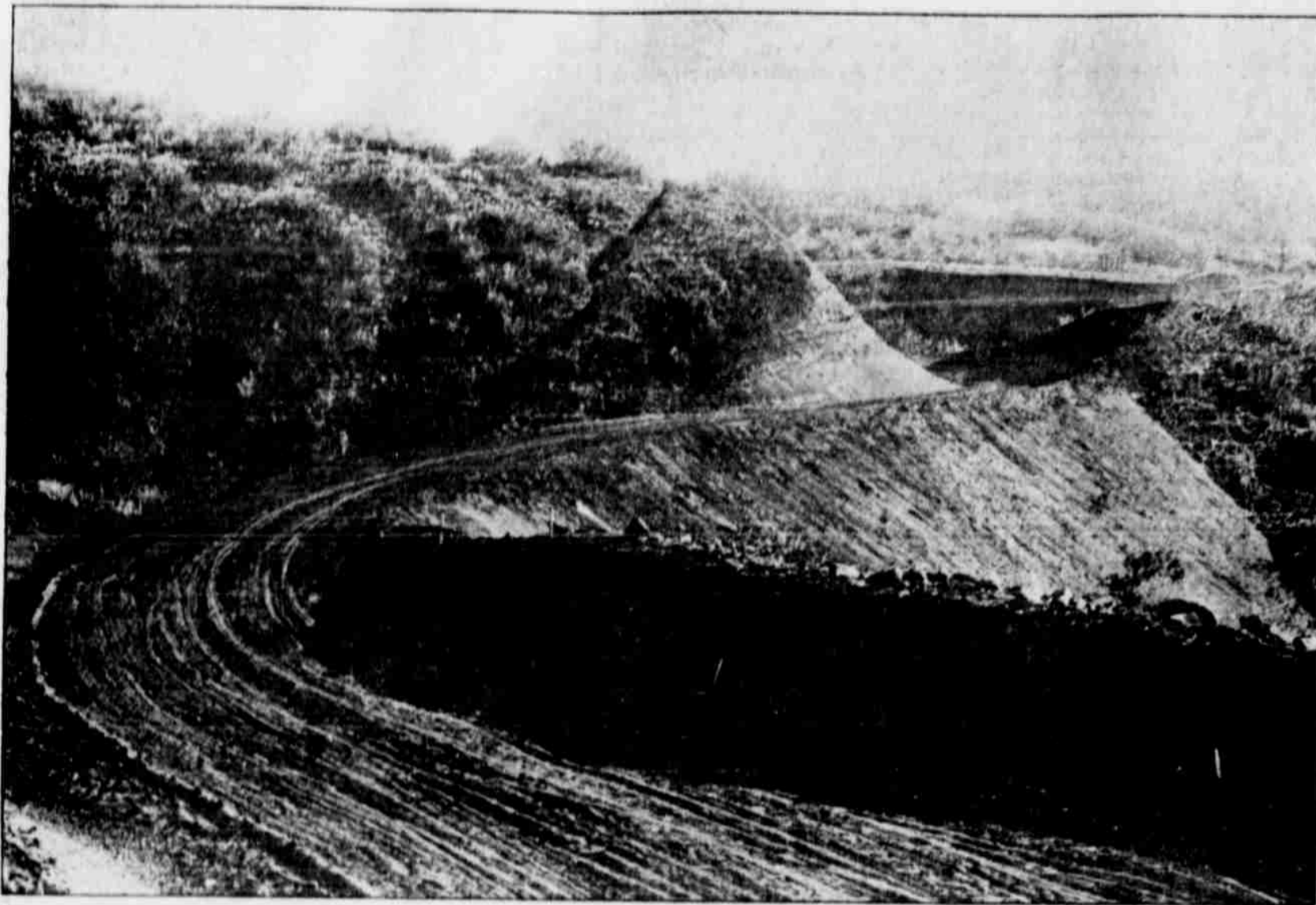


New Grade Over Siskiyou Mountains to California



This grade has a maximum grade of six per cent, a minimum radius for curves of 200 feet, and is free from sudden turns and "hair pin" curves. At every curve the road is visible for 100 yards ahead.

Similar with the history of pavements of other parts of the country, realize that no other pavement however well it may be laid, has the wearing, endurance, or age-resisting qualities of a well laid Port and cement concrete. The surface will wear in time, but the concrete as a base for this wearing surface is there for eternity and becomes stronger with age. As for cheapness, the contractors have to guarantee their pavement for five years and the cost of this pavement, the cheapest which they would guarantee to last for five years, is shown on page 13 of the comparative costs and whether or not it is the cheaper pavement may be judged.

the slopes is a big protection. Also the slopes are made flat enough so that there will be very little sloughing off and filling the road bed. This road is 24 feet wide, has a maximum grade of six per cent and maximum curvature of 100 foot radius, on open curves and 150 feet on blind curves. J. W. Sweeney of Portland was the contractor.

This road connects with the California section of the Pacific highway which was also built this summer, along similar lines.

Pavement

In choosing the kind of pavement to be laid between Ashland and Central Point, Mr. Bowby had in mind the cheapness of pavement or first cost and the degree of permanence or maintenance cost. There was apparently no question in the minds of the voters but they wanted a pavement which the autos and iron tired vehicles would not destroy in a short time and it was just as apparent that they did not expect to pay out large sums in the future each year for the repairing and maintenance of the road. With this in mind he decided to put down a Portland Cement concrete pavement, later in the year opposition to this pavement and the cost became so strong among a certain class of the taxpayers, that the distance from the county poor farm to Ashland, 4 1/2 miles, was let by contract for asphaltic concrete. The argument of the parties protesting against the Portland cement concrete was that the asphaltic concrete would be nearly as good and cost much less. However, those who are fa-

The asphaltic concrete extends from the foot of Farum hill to the poor farm just north of Talent. This pavement is five inches thick and 16 feet wide. From the poor farm to Medford the pavement is six inches thick, 16 feet wide and consists of Portland cement concrete. Also the pavement from Medford to Central Point is of Portland cement concrete.

The asphaltic concrete was laid by Clark & Henry Construction company, contractors, 4 1/2 miles, while the Portland cement concrete 3 1/2 miles, was laid by the county and state direct, without letting by contract. This was not let by contract because of the extreme amount of care required to put this pavement down right. For instance by the omitting of a bag of cement here and there, or by cutting down the number of turns of the mixer for each batch of concrete, the pavement may be ruined.

State Highway Engineer Bowby, under whose supervision this work was done by request of the county court, has made it not only imperative that this work be done with great care and accuracy, but that the theoretical and scientific principals of concrete road building be followed out. It has been Mr. Bowby's plan to be guided not only by his own experience but also by the



Type of Concrete Bridge Erected Along Pacific Highway in Jackson County.—Photos by E. D. Weston, Medford.



Pacific Highway

(Continued from Page Four.)

tax levy to replace and repair these culverts and bridges when they get old. With the material used the first cost is the only cost. No pains have been spared in protecting the new grade from the destructive effects of water. The surface ditches carrying the water into the numerous culverts without letting it run down

(Continued on Page 6)