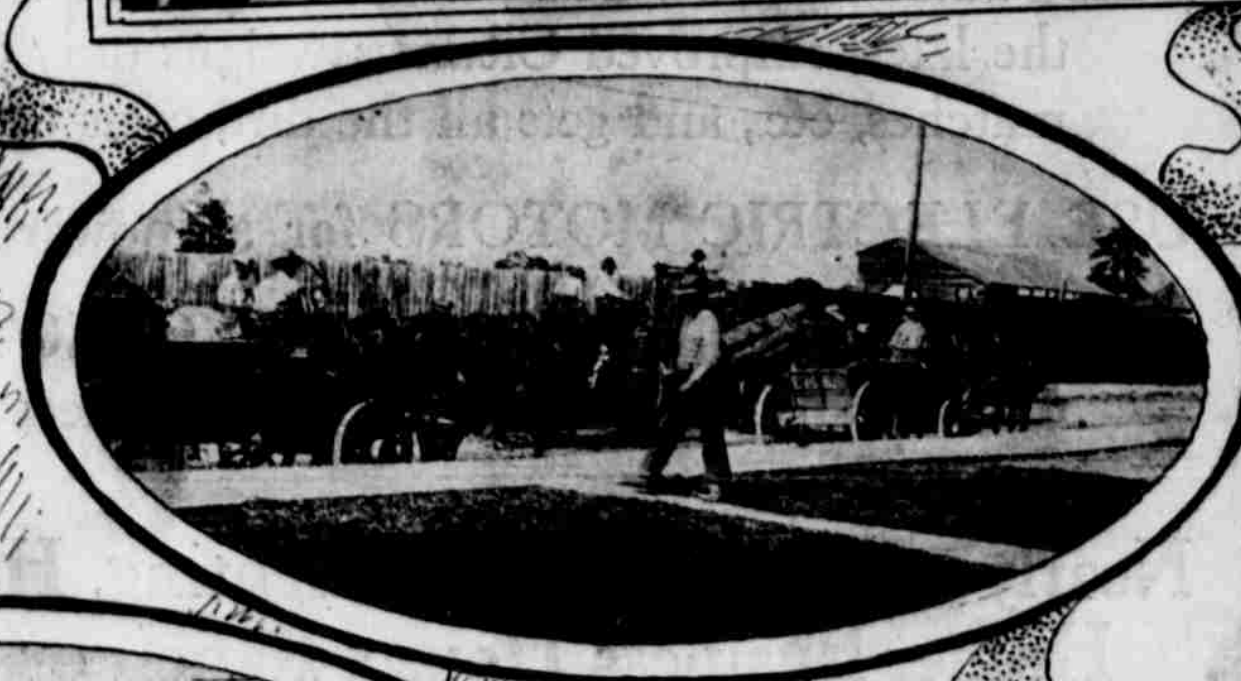
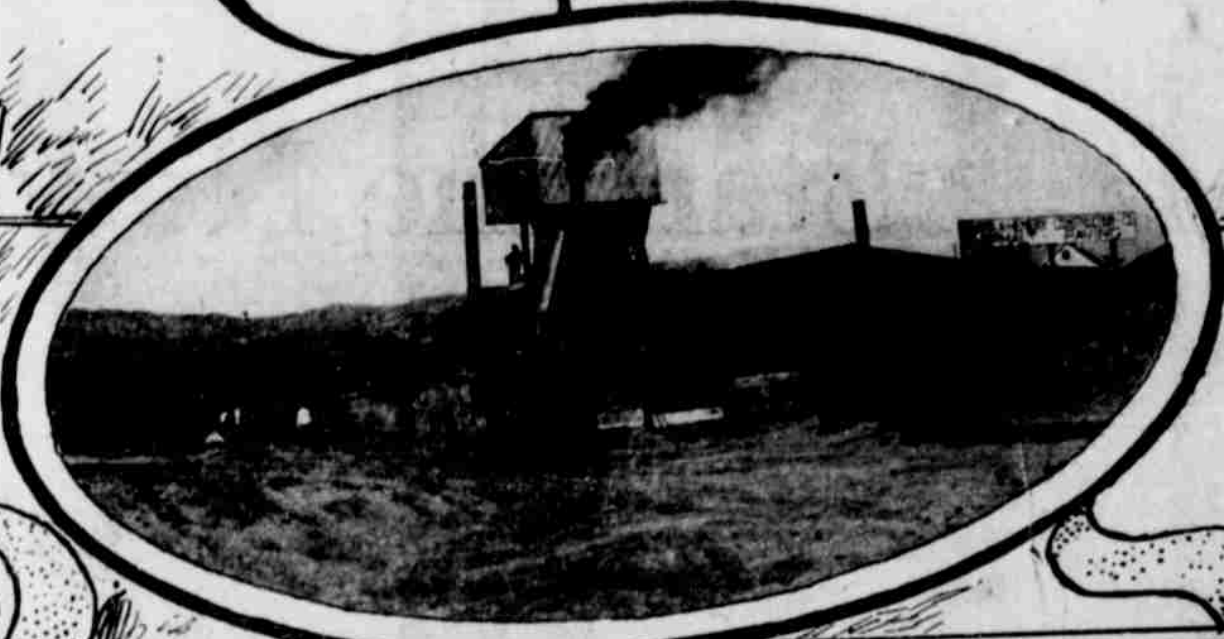


Making MEDFORD THE BEST PAVED CITY in AMERICA



Paving scenes on Medford's Streets, showing Clark-Henery Construction force at work laying sixteen miles of asphalt pavement. The total paving in the city totals twenty miles. Scenes show a temporary stable, mixing plant, laying concrete binder and asphalt, grading teams at work, wagons hauling asphalt and bull dog curbing.

No city in the world excels Medford in the amount of paving for its population. The city boasts of 20 miles of hard surface pavement, practically all of which was laid in the past three years. The cost approximates \$1,000,000. The bulk of the pavement is asphalt with concrete base, laid by Clark & Henery Construction company.

Good Roads association and fore-most good roads advocate in the nation, while recently visiting in this city. "I have inspected all the new roads and paving construction under way in both Europe and America, so I feel that I know what I am talking about. Pavement and good hotels have transformed Medford into a most attractive city. Medford and Ashland are far ahead of any cities south to Sacramento."

A city of 11,000 inhabitants, it has 386,645 square yards of pavement, or 19.85 lineal miles, or 35 square yards per capita. Medford has more paved streets today than Portland had at the time of the Lewis and Clark fair in 1805 and Portland at that time was a city of 150,000 inhabitants.

Asphalt Used
With the exception of the first and some of last season's work, all of the pavement in Medford has been laid by the Clark & Henery Construction company of Sacramento. This company lays an asphaltic pavement upon a concrete base, which has proved very satisfactory, while upon a few residence streets an asphaltic macadam has been laid. This type of pavement was adopted by the city after a thorough investigation of pavements throughout California was made by a committee of city officials.

The Clark & Henery Construction company began operations in Medford late in the season of 1910, and January 1, 1911, found 157,024 square yards of the improvement laid in the city. In 1911, having contracts ahead of them, they got an early start and laid 179,233 square yards. The company erected a huge plant in this city and rushed the work. Four years ago there was not a single square yard of paving in the state south of Eugene. Then it was that Medford, an ambitious little city of 5000 souls, started an agitation for better streets. Each winter found her thoroughfares impassible. The agitation grew and a contract was let for 35,000 yards. This was laid on the principal street of the city, and so obvious were its benefits that the following season an additional contract was let. In 1911 this was supplemented by a contract greater than the first two together. Other towns in Southern Oregon have profited by Medford's example

and now are having their streets surfaced. The gigantic task of making Medford the best paved city in America was in the hands of the Clark & Henery Construction company of Sacramento and Stockton, Cal. That they are doing a good job and are laying a superior pavement is evidenced by the fact that they have been awarded contract after contract for laying their asphalt pavement in the city. The Clark & Henery Construction company is a California corporation, in which W. R. Clark is president.

In charge of the work being done in this city was Arthur W. Clark, who made a record for himself and the company by the manner in which he handled the job. The company is one of the largest contracting firms on the Pacific coast and now has paving plants at Roseburg, Stockton, Sacramento, Ukiah, San Mateo, San Jose, Oakland, Burlingame, Eugene, Salem and other cities. The fact that all of the cities in which they have worked speak highly of their pavement and the manner in which it is laid shows that the company does its work well.