

THE MEDFORD CEMENT BRICK & BLOCK WORKS

Situated Corner Tenth and Fir Sts.

H. A. JANSEN, Proprietor.

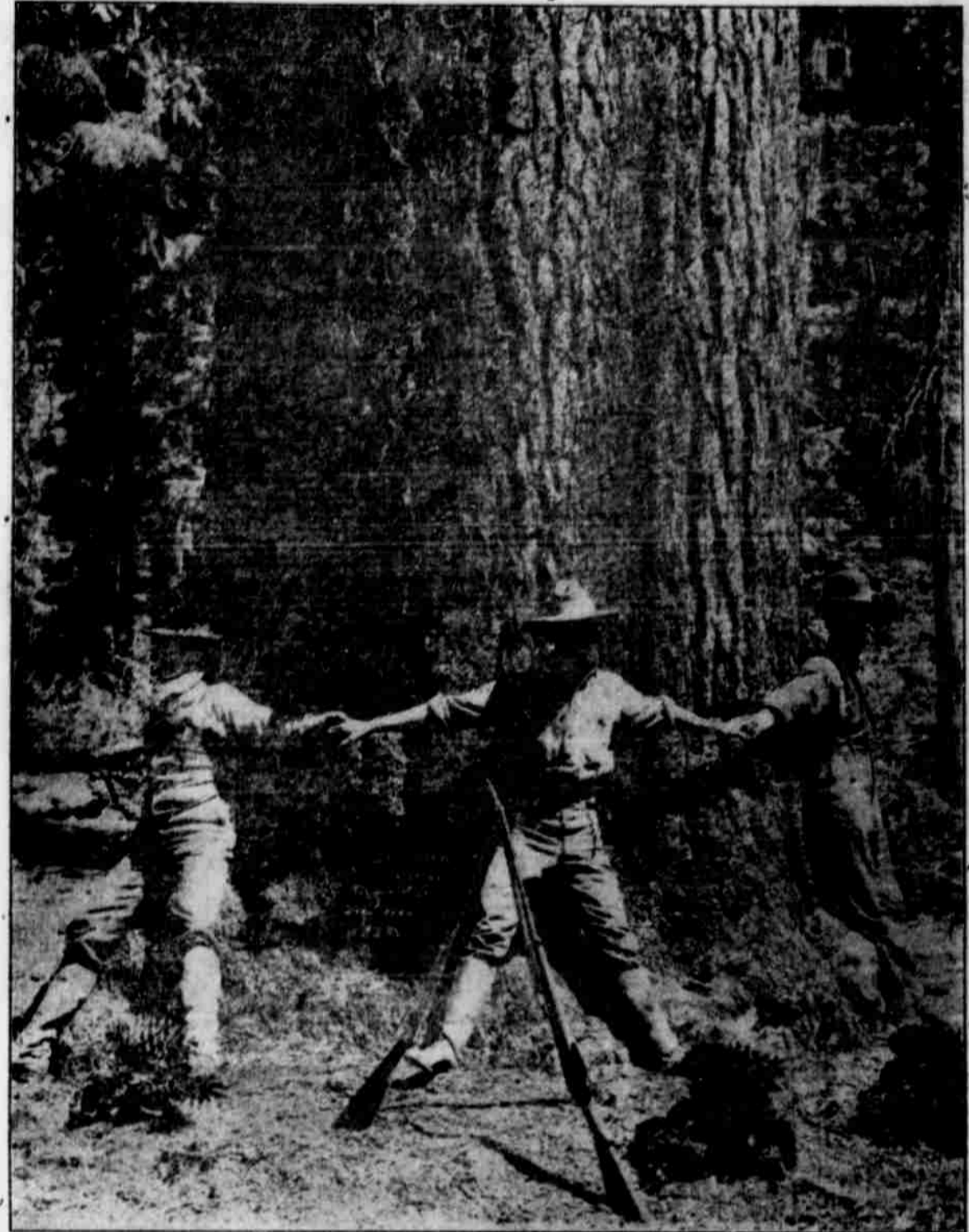
Phone 416-J.



Manufacturer Cement Brick and Blocks for all kinds of buildings. The picture above is one out of the many different building designs which this factory can produce; also specialize Ornamental Brick for fireplaces, sills, caps, arches, porch columns, steps, reinforced cement chimney blocks, flower urns and stands, reinforced cement window weights, everything in the line of cement products.

ESTIMATES ARE CHEERFULLY GIVEN AND INSPECTION INVITED.

FROM THE TREE DIRECT TO YOU



EVERY PRODUCT OF THE FOREST

MEDFORD WOODS LUMBER COMPANY OREGON

Warehouses at Medford and Central Point



President and Manager—J. A. Perry.

Directors: J. A. Perry, M. A. Dickerson, S. A. Nye, D. W. Stone, W. H. Brown, D. E. Phipps, J. G. Gore, H. A. Gray, Jr., T. J. Williamson.

A purely co-operative association, organized and managed by fruit-growers of the Rogue River Valley. Membership fee, \$10. Orchardists generally are invited to become members and participate in the benefits of the Association. We do not pool. Our fruit is sold on its merits, f. o. b. when practical, and the proceeds promptly turned over to the grower.

We Handle Orchard Supplies of All Kinds

Rogue River Fruit & Produce Assn.

ORGANIZED FEBRUARY 1910
Four Consecutive Seasons of Successful Operation

SIX WAREHOUSES and
\$40,000 Cold Storage Plant
Capacity: 50 Cars Cold Storage, 50 Cars Dry Storage

PACKERS AND SHIPPERS
of
BLUE TRIANGLE BRAND
APPLES and PEARS

A. C. Allen, Vice-President; A. Conro Fiero, Secretary and Treasurer.

DIRECTORS: A. C. Allen, W. V. B. Campbell, A. S. V. Carpenter, Austin Corbin, George B. Dean, A. Conro Fiero, E. F. Guthrie, P. W. Hamill, G. A. Hover, E. S. Palmer, R. H. Parsons, C. W. Potter, R. C. Washburn, S. V. Beckwith, Manager.