

Clubs Play Leading Role in Community Life

Southern Oregon District Federation of Women's Clubs

A noted psychologist has said: "The spirit by which the twentieth century will be known to future centuries is the awakening of the social consciousness, that is, the coming to life in us of the sense of brotherhood, of humanhood, of the oneness of all human beings everywhere, and of their inter-dependence upon one another." This First Southern Oregon District Federation of Women's Clubs is due to this sense of humanhood in us, as individuals, this desire to serve others, this wish to make this a happier, better place for all to live in.

It was this spirit which led to an invitation from the federated club of Ashland to the various clubs in Jackson and Josephine counties to meet in Ashland park on September 5 last. Delicious luncheon and most interesting program, a discussion concerning the advisability of Southern Oregon federation was held and steps were taken toward perfecting such an organization. A temporary president and secretary were appointed, who, together with the presiding officer of each club represented, formed a board to draw up a constitution and report at a meeting to be called by them. This report was made at a called meeting in Grants Pass on November 5. The constitution was adopted and the following officers were elected: President, Mrs. W. G. Davidson of Medford; first vice-president, Mrs. E. C. Gard, Ashland; second vice-president, Mrs. C. H. Clements, Grants Pass; recording secretary, Mrs. E. E. McKibben, Grants Pass; corresponding secretary, Mrs. Bert Harmon, Medford; treasurer, Mrs. C. H. Vaupel, Ashland; district organizer, Mrs. A. A. Ford, Medford; auditor, Mrs. T. J. Mallinckrodt, Phoenix.

Since this infant federation is still in its swaddling clothes, it has as yet accomplished nothing definite, but has ideals which it is hoped will soon be realized. What are they? Here are a few. In order to foster a spirit of co-operation in this valley, without which nothing worth while is ever accomplished, it is hoped to include every woman's organization that is non-partisan and unsectarian, and to organize clubs in every school district in the valley, so that eventually it shall include every woman in the valley. Think of the power and inspiration of such a body of women working together. There is not one good thing they could not accomplish if they set their mind upon it and worked for it. Matters of education, of legislation, of uplift can be accomplished in much shorter time and much more effectively if working as a unit, rather than as individuals organizations.

engaged, it has recently enrolled in the extension division of the University of Oregon and is pursuing the courses of study outlined by the faculty there, specializing in the courses offered in modern literature. The club has a present membership of about thirty. Its officers are: President, Miss Margaret Hubbard; vice-president, Mrs. Phillip Hamill; secretary, Mrs. Stewart Patterson; treasurer, Mrs. Stanton Griffiths.

Greater Medford Club

The Greater Medford club was organized in 1903 with twenty charter members. Its first object was assisting with the Lewis and Clark exposition, but later it became a civic club for the beautification of Medford.

One need only look about him to see what this enterprising club has done in making Medford one of the most beautiful and attractive of home cities. It established and maintained a free reading room, which in a very few years has grown into the beautiful Carnegie library, set in its own little square of green. It converted a potato patch into a small city park with a fountain, seats, lights and a bandstand. Sage Park, in the north end of town, is also due to the efforts of the Greater Medford club. The club placed the first sanitary drinking fountain on the streets. Tree planting in the parkings was started, an annual clean-up day was inaugurated; through its efforts the Southern Pacific right of way was parked, curfew has been established, spitting ordinance passed and sanitary conditions in general have been vastly improved.

Last year, under the presidency of Mrs. W. G. Davidson, the club affiliated with both the state and the General Federation of Women's Clubs. During the year the first departmental work was undertaken, departments formed and chairmen named.

The civic section was organized in 1913 by Mrs. J. F. Reddy. She gave a civics tea at her beautiful home on Siskiyou Heights and outlined her plan of work. The first work undertaken was a flower show and better babies contest held in the Sparta building on the Fourth of July. This flower show was the beginning of a systematic rose and tree planting campaign, which is now under way.

The better babies contest proved that there are just as fine babies in Rogue River valley as in any other section of the country, one husky youngster being given the highest score ever attained in the west.

It has been the aim of the club to organize and maintain an efficient educational committee that should take an active interest not only in local school affairs but in the wider educational affairs of the state and nation. Last year, under the inspiring leadership of Mrs. George Rebec, a course of study was followed calculated to bring our women into a sympathetic understanding of the need of the changing curriculum of our school system, an active part was taken in the campaign in behalf of the university appropriation bills and the story hour was established and maintained at the library. This year Mrs. J. M. Root, the chairman, is carrying on the study of educational subjects as outlined in the club year book, a reception was given at the Hotel Moore for the public school teachers and the members of the school board and other work is in progress cooperating with the board for the benefit of our schools.

Literature Department
The literature department of the Greater Medford club with Mrs. T. W. Striegle chairman and Miss Alice

COLONY CLUB

One of the most active of the women's clubs of the valley is the Colony club, which was organized in 1911 and took its name from its somewhat pretentious sister organization of New York City. The club was first conceived as a means of affording a common meeting place for the wives of ranchers throughout the valley, but through its three years of activity has gradually widened its purposes and its scope of endeavor.

Beside the social and charitable work in which the club is constantly



Club House and Tennis Grounds of Medford and Country Club Possessing the Only Golf Links South of Portland.

engaged, it has recently enrolled in the extension division of the University of Oregon and is pursuing the courses of study outlined by the faculty there, specializing in the courses offered in modern literature.

The club has a present membership of about thirty. Its officers are: President, Miss Margaret Hubbard; vice-president, Mrs. Phillip Hamill; secretary, Mrs. Stewart Patterson; treasurer, Mrs. Stanton Griffiths.

PAN HELLENIC CLUB

The Medford Pan Hellenic association, an organization of Greek letter women representing many colleges in the United States, was organized in September, 1912. The charter members numbered seven, while the present membership, including both associate and active, consists of about twenty women.

The aim of the association is twofold, both social and philanthropic. As a result of the latter, Medford now has a public rest room, which was established a year ago, and which has been open to the public every day since with a competent person always in charge.

During the past year, the local chapter has affiliated with the National Pan Hellenic association. This national organization sends out regular bulletins for the purpose of keeping the individual branches in touch with the general work which is carried on by similar local Pan-Hellenics throughout the country.

PARENT-TEACHERS' CIRCLE

The Parent Teacher circle of the Roosevelt school was organized in November, 1911. The teachers, under Miss McKay, their principal, gave an "at home" to the mothers one Friday afternoon. At this meeting the desirability of such an organization was discussed, which resulted in the election of Mrs. George King president, Miss Julia Fielder vice president, Mrs. J. C. Eastman secretary and Mrs. Isenhart treasurer. These officers were reelected the second year.

The circle has been very active. The first year in cooperation with the school children \$50 was raised and a lawn put in on the school ground. Since then a teacher's room has been furnished with couch, rug, cupboard, electric plate and dishes. Very many interesting meetings have been held and following subjects discussed: Health, diet, children's reading, discipline, recreation, etc. In connection with the other circle investigations have been

Officers of Women's Clubs in Medford



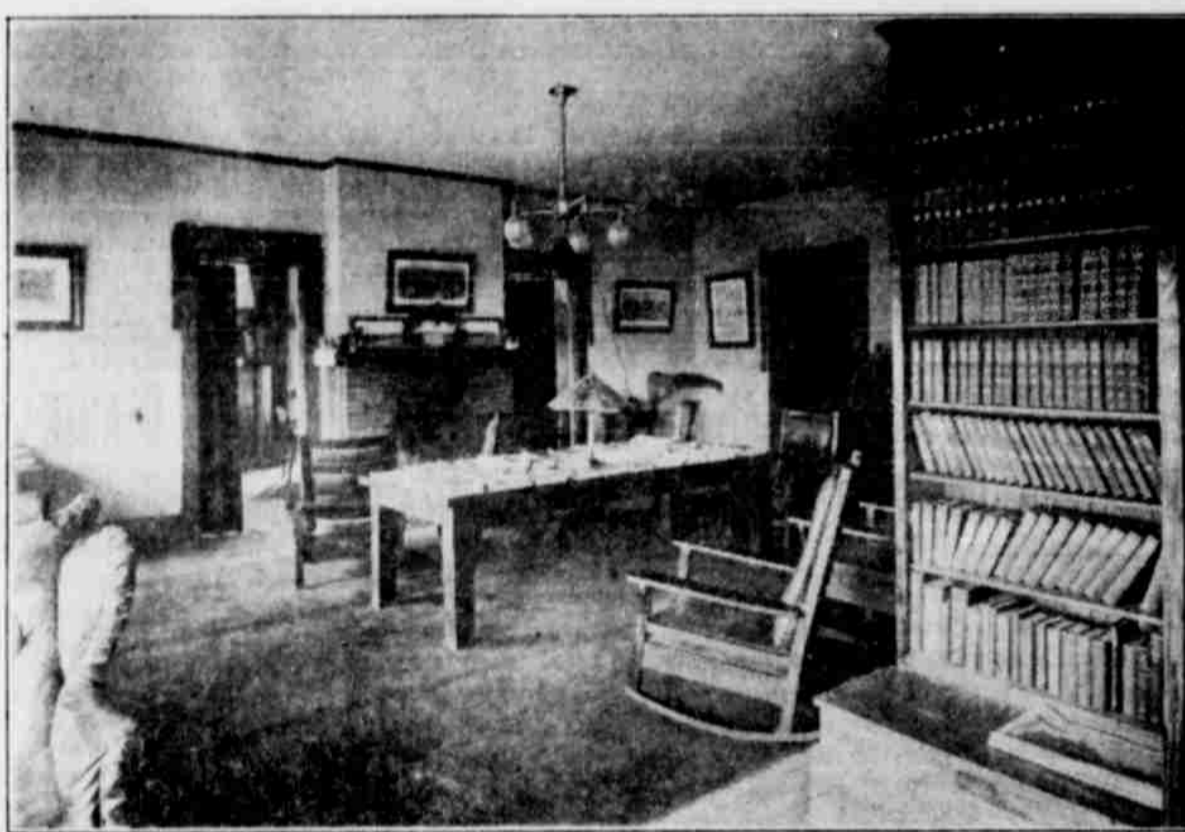
MRS. W. G. DAVIDSON
President Southern Oregon Federation of Women's Clubs



MRS. F. E. MERRICK
Second Vice-President of Oregon Federation of Women's Clubs



MRS. E. E. GORE
President Greater Medford Club



Reading Room of Rogue River Valley University Club.

made of the moving picture shows, curfew law, selling to secondhand dealers by minors and an industrial school fair.

The present officers are: Mrs. S. L. Leonard, president; Miss Edith Fish, secretary; Miss Theone Corkin, vice president; Mrs. H. E. Foster, treasurer.

WEDNESDAY STUDY CLUB

The Wednesday Study club was organized on March 2, 1908, with the following women as charter members: Mesdames Streets, Podd, Saelinger, Kentner, Haskins, Colvig, Merrick, Hollis, Stoddard and Deuel.

In its infancy the club was a reading circle, with the Stoddard lectures the books read. At first there were no officers elected, the hostess for each meeting acting as president. At that time, as at present, the number limit for members was twenty-five.

The first year book was printed in 1909, containing the program of study for 1909-1910, with the list of officers as follows: President, Mrs. William Vawter; secretary, Mrs. W. G. Smith; treasurer, Mrs. M. J. Miller.

The club has studied many interesting subjects during its existence and is now working on a comprehensive study of China.

The meetings are held in the basement of the public library. The personnel of the club has changed somewhat during the years, but the feeling of good fellowship grows and all are enthusiastic in their enjoyment of the spirit of the club.

Medford Golf and Country Club

The Medford Golf and Country club was organized at a meeting of seventy enthusiastic sportsmen held on October 27, 1910. Its purpose was to promote clean sport and to provide adequate quarters and facilities for all the popular games and sports.

In June, 1912, eighty acres of land, two miles north of Medford on the Roxy Ann road, were secured and active work was begun remodeling the dwelling house into a club house, building tennis courts and laying out and seeding the golf links.

There are at present fifty-five active members and one honorary member. New members are continually joining and the number of regular members has never been larger than now.

The principal object of the club has been to promote sports, and this end has been constantly kept in view. However, the social side of Country club life has not been overlooked and dinners, teas and dances are frequently held. These are allowed on every weekday night except Saturday, when a general table d'hote dinner is served.

The club house contains living room, ladies' room, men's locker room and shower, men's locker rooms and shower, lounge room and kitchen. On two sides is a twenty-foot porch with dancing floor, which is enclosed in winter with glass. There are lawns and many trees.

Directly east of the house are the

tennis courts. These courts were built up from two feet below the ground level with rock and buckshot gravel and have a top two-inch dressing of screened buckshot. There are no better courts on the Pacific coast.

The shooting traps for clay pigeons are situated two hundred yards west of the club house. Here the traps are located, as also a shelter with seats.

The golf links, three thousand yards in length, comprise a nine-hole course with plenty of sporty play. Starting with the first hole, the player must drive over the fish pond, a distance of about fifty yards. On every hole he is faced by some new problem requiring judgment and skill. The course record of thirty-six strokes is held by Chandler Egan, who was twice American national golf champion.

Sweepstake tournaments are held every Saturday afternoon, and more formal tournaments are scheduled during the spring and summer seasons. The Christmas day and the New Year's day tournaments are surprising to our eastern brothers, who must await the melting of the snows before they can play on their home links.

The present officers are: S. V. Beckwith, president; W. I. Vawter, vice president; H. C. Egan, secretary; Leonard Carpenter, treasurer, these together with E. G. Burgess, F. H. Hopkins, E. B. Davis, W. V. B. Campbell, H. C. Bingham, Frank Preston and Lincoln McCormick constitute the board of governors.

FOR SALE

10-20-35 or 45 acres of Bear creek bottom land, one and one-half miles from Medford. This is all good for alfalfa, no waste land. At \$200 per acre.

E. J. STEWART Medford, Ore.

University Club

The Rogue River Valley University club has three years of history behind it. Organized at a time when there was little opportunity for social activity among the orchardists it has now become a strong bond between Medford and the surrounding country.

There are two classes of membership in the club, the university membership, to which university men only are eligible, and governors membership, which is open to non-university men.

There are one hundred fifteen members of whom nineteen are governors members. Forty-five universities are represented by members. The greatest number from any single university is twelve men from Yale. The club rooms are in the Mail Tribune building. They consist of billiard room, living room, dining room, cafe and kitchens.

The officers and governors of the club for the current year are: P. W. Hamill, president; Lincoln McCormick, vice president; Stanton Griffiths, secretary; and A. S. V. Carpenter, treasurer; A. E. Reames, E. G. Burgess, M. L. Erickson, S. V. Beckwith and John Orth.

COLLEGE WOMEN'S CLUB

This club was formally organized at a meeting of college women of Medford and vicinity held in the parlors of the Hotel Medford in December, 1912.

At this meeting a committee was appointed to draw up a constitution and by-laws which were later adopted by the club. During the first year the meetings took the form of a luncheon the second Saturday of each month at Hotel Medford. The luncheon was followed by a business meeting and a social hour. Often some prominent out-of-town speaker addressed the club at this time.

At the annual election of officers in December the following ladies were honored with positions as officers: President, Mrs. W. G. Davidson; vice-president, Mrs. John Torney; secretary-treasurer, Miss Nellie M. Santee. The work of the past year was reviewed and plans made for 1914.

It was found that in the first year of the club's existence it had accomplished the following results:

It has taken care of several out-of-town high school students by placing them in good homes, where their social and educational welfare would be secure. Some financial aid has also been extended where necessary.

A loan fund has also been established for the purpose of helping worthy graduates of the local high school to complete their educations at the University of Oregon.

A number of interesting speakers have been secured at various times to address the club.

FOR SALE, 638 ACRE RANCH
That will lead to wealth and independence if conducted as a fruit and stock proposition. The owners have been this splendid property out of the raw material but lack means to continue in further development, and must be sold.

Deep, rich, free soil, sub-irrigated, perfect drainage. 100 acres planted to commercial pears, apples and peaches, now 4 and 5 years of age. Fruit buds show for a large crop of peaches, also for first crop of pears, Spitzenbergs and Jonathan apples in 1914. 200 acres ready to set to fruit or be used for diversified farming, balance in pasture and timber.

A never failing creek flows through its entire length. Irrigation for fruit trees will never be necessary. Very rich garden lands can be irrigated from creek. Good seven room dwelling, water piped from spring. Hay and stock barns, blacksmith shop and other farm buildings for machinery and tools.

A five acre park of mammoth Black Oak and Laurel trees reserved for building sites. Property joins limits of a progressive little city and is only one-half mile from railroad depot, school and church.

This ranch can be purchased at less than actual cost and there is no greater bargain in the Rogue river valley for a combination fruit and stock ranch.

For further particulars, price and terms, address the owners.

BOX 638, MEDFORD, OREGON.

Established 1910

MEDFORD CONSERVATORY
FOR
MUSIC
AND
LANGUAGES

GERARD TAILLANDIER, DIRECTOR

COLLEGE BUILDING, 31 N. GRAPE ST.

The Best is the Cheapest in the end!