

OF INTEREST TO WOMEN

MONTHLY MUSICAL OF MUSIC SESSION MOST SUCCESSFUL

Monday afternoon at the Page theater and under the auspices of the musical department of the Greater Medford club...

These musicales are becoming events which are anticipated with great interest and pleasure by the music lovers of Medford...

Mrs. W. F. Isaacs, who is an accomplished musician herself, showed by the beautiful arrangement of the stage setting that she is also a lover of the artistic...

The two Slavonic dances by Dvorak were played with the impetuous rhythm which these gracefully climbing melodies require...

Chopin, although born in Poland was of French origin and spent the greater part of his life in Paris...

Chopin, although born in Poland was of French origin and spent the greater part of his life in Paris...

The Russian folk dance by Miss Grace Wilson was greatly enjoyed and lent the charm of variety to the splendid program...

Mrs. E. M. Andrews, the directress of this department, promises great things for the future...

DAHLIA BULBS TO BE DISTRIBUTED SATURDAY NEXT

The dahlia bulbs which the civics section of the Greater Medford club have in charge for distribution...

Does any one else in or near Medford, who can give those magnificent flowers special care want any of these bulbs?

There are in all one hundred forty of the choicest varieties known, and some idea of the immensity of this gift can be gained when you realize that many of these bulbs cost one dollar each last year.

Distribution will take place from the public library both morning and afternoon of Saturday, December 6.

All persons wishing to register for these bulbs please call up 865 after 7 p. m. or leave your name and address at the public library where the librarian, Miss Robinson, has a book for this purpose.

It is desired to keep an accurate list of those taking the bulbs as special literature will be sent them on the culture of the dahlia.

Rose cuttings can also be had from the civics section at this time but the chrysanthemums will not be ready for distribution until later.

History and Cultivation of Dahlia The Dahlia is a native of Mexico having been discovered on the plateaus and prairies at a height of about 5000 feet above sea level...

Every morning when you go to your garden you will find there new faces and new wonders to greet you which cannot fail to give you new pleasures and a lesson for the day...

The name Dahlia was given to the plant by Abbe Cavanilles in honor of Dr. Dahl, a Swedish botanist. The earliest record of the plant was made by Francisco Hernandez, who was physician to Philip II. of Spain in the year 1657.

INDIGESTION ENDED, STOMACH FEELS FINE Time "Pape's Diapepsin" in Five Minutes all Sourness, Gas, Heartburn and Dyspepsia is Gone

Sour, gassy, upset stomach, indigestion, heartburn, dyspepsia; when the food you eat ferments into gases and stubborn lumps; your head aches and you feel sick and miserable...

Get a large fifty cent case of Pape's Diapepsin from any drug store. It is the quickest, surest stomach relief and cure known...

WOOD Big Body Fir. OAK cut from large timber. CARLOAD OF PINE STOVE WOOD JUST RECEIVED. Phone in your orders for Tier Wood or Cordwood to Frank H. Ray Measurement Guaranteed Sixth and Fir Streets. Phone 750-R

There was a lapse of one hundred thirty years before we hear of the flower again, the next record being in the year 1787, and this time we are indebted to Nicholas Joseph Thierry Misonville...

In the same year the director of one of the botanical gardens in Mexico, which we believe was in Mexico City forwarded seeds of his dahlias to the Madrid botanical gardens...

At this time the director of the botanical gardens of Madrid was under a noted student of nature Abbe Cavanilles. The Marchioness of Bute, whose husband was British ambassador to the court of Spain, obtained seeds from him and took them to England...

Mr. Frazer took great pains with this new flower and after much experiment discovered that it was best propagated by replanting the bulbs. He discovered also the method of duplication of petals, and the results were so marvelous that within a few years Mr. Frazer began cataloguing his new flower.

Culture The dahlia is one of the easiest of all plants to grow and will produce more flowers than any other plant grown if the proper cultural directions are followed...

The tubers should be planted any time between April 15th and June 1st. Plant in holes four feet a part sitting a stout stake beside the hole to tie the plant to and also to nail the label upon...

Cultivate about two inches deep and about twice a week—often enough to keep the surface loose. When you notice buds appearing stop all cultivation and place a shovelful of well-rotted manure around each plant on top of the ground only...

ELKS NOTICE The Elks' Memorial Services will be held at the Page Theater Sunday, Dec. 7, 1913, at 2:30 p. m. Elks are requested to meet at the lodge rooms at 1:30 p. m. COMMITTEE.

the hot weather and the blossoming period. Be sure to never wet the foliage during the blossoming period. Always irrigate at this time.

Never allow flowers to fade or dry up on the plants but keep them cut off as they take the strength from neighboring buds. Dahlias should begin flowering in July and with proper care will continue to give perfect blooms until heavy frost cuts them down...

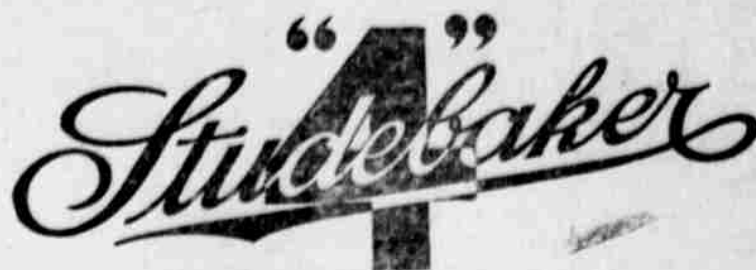
Sanitary Survey Welcome Apropos of the expressed intention of the civics department of the Greater Medford club to make a sanitary inspection rating of the different stores and meat markets, candy stores and milk depots of Medford, the following letter was received today:

Dear Madam: I cordially invite you and your committee at any and all times to inspect my store and I will gladly assist you in any way possible. Yours truly, CHAS. L. SCHITTFELIN.

Coffee The name Schilling's Best on a can of coffee brands the coffee, identifies it as such coffee as you want or you don't pay for it.

You know what coffee is, but you don't know how good coffee can be unless you have drunk Schilling's Best. You had better try it; you can't lose.

ASHCRAFT BROS., 114 South Bartlett.



\$1200 F. O. B. Medford

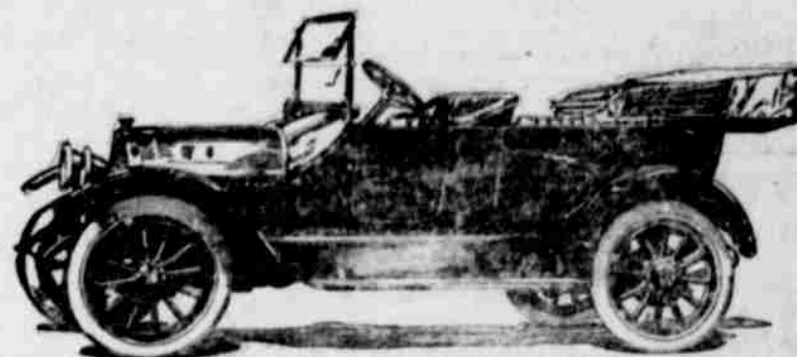
In appearance the new Studebaker "Four" fills the eye. It is a handsome, big car with plenty of room for five passengers, electric lighted, electric starter.

Timken Bearings where Wear is Greatest.

The rear axle is of full-floating type, with all parts completely accessible. There are nine Timken bearings in the transmission and drive unit, and two Timken bearings in the hub of each front wheel.

Has Genuine Cowl Dash.

From every standpoint—comfort, durability, economy, appearance, efficiency—the Studebaker "FOUR" is a car to be sought for and purchased, because in its field it has no equal.



Medford Garage

ASHCRAFT BROS., 114 South Bartlett.

Page Theatre, Thursday, Dec. 4

THE THEATRICAL EVENT OF THE YEAR.

John Cort's Attraction Extraordinary

ANNA HELD ALL STAR VARIETE JUBILEE THE GREATEST CONSTELLATION OF LUMINARIES ON ANY STAGE

THE ULTRA VIVACIOUS

ANNA HELD ROLAND BOTTOMLY, CHARLES JUDELS AND BEAUTY CHORUS In a New Musical Playlet, "MLLE. BABY"

GEORGE BEBAN & CO. in an Emotional Sketch in one act "THE SIGN OF THE ROSE"

The Emperors of Comedy WARD AND CURRAN in "THE STAGE-DOORTENDER"

CHINA'S LATEST IMPORTANT IMPORTATION

THE IMPERIAL PEKINESE COMPANY MOST WONDERFUL OF COMEDY ACROBATS

THE YOUNG HUNGARIAN HIRSCHEL HENDLER RIVAL OF PADEREWSKI

THE IDOLS OF ALL EUROPE FRANCIS & FLORETTE IN ARTISTIC BALL ROOM DANCES

CHARLES AHEARN AND COMPANY IN THE MOST NOVEL AND STARTLING COMEDY BICYCLE ACT OF INTERNATIONAL RENOWN

THIS WONDERFULLY ARTISTIC ORGANIZATION TRAVELING BY SPECIAL TRAIN ON ITS TRANSCONTINENTAL TOUR OF CONQUEST

The Management Guarantees That Miss Anna Held herself Will Positively Appear.

Prices—\$2, \$1.50, \$1, 75c, 50c. Special attention given to Mail Orders received now. Telephone 418 Those attending from towns north of Medford will have a car attached to the Anna Held special leaving Medford immediately after show. Come to Medford on regular train.