

# All Cities of the Valley Show Progress During Year



Phoenix Public School.

All of the towns of the valley have made splendid growth during the past year and have installed many modern city improvements. Their growth has paralleled the strides of development made in the valley. Each and all of them have attractions to offer home-seekers.

### Eagle Point

Eagle Point and the country tributary to the town are the first beneficiaries of the Hill system of railroads in Oregon, the town having been selected as the helper station, the location for the railroad shops and round houses, etc., and ultimately will be the division town, when the Pacific & Eastern road is extended to a connection with the Oregon Trunk line, now terminating at Bend, Ore.

Eagle Point is particularly well situated for residence purposes on the banks of the beautiful Little Butte creek, one of the finest streams in the west, and in an ideal location for traffic, some of the best fruit lands in the Rogue River valley being within a few miles.

Not alone in apples and pears, but also in peaches, apricots and cherries, is the section to the front. There is a quality about the peaches produced here which induces many to be set in apple and pear orchards as fillers.

There is something in the alluvial soil, deposited along Little Butte creek especially adapted to the growing of garden truck in a commercial way. The onions produced here are in a class by themselves in southern Oregon.

Eagle Point is destined to play no small part in the manufacturing fu-

ture of the Rogue River valley, owing to the water power available and to be transmitted or used direct from the channels of Rogue river and the tributaries above Eagle Point. The marvelous timber belt at the head of these streams, as yet untouched by the logger, is one of the main factors in tonnage producing, and is one of the many reasons why the Hill system has invaded the valley.

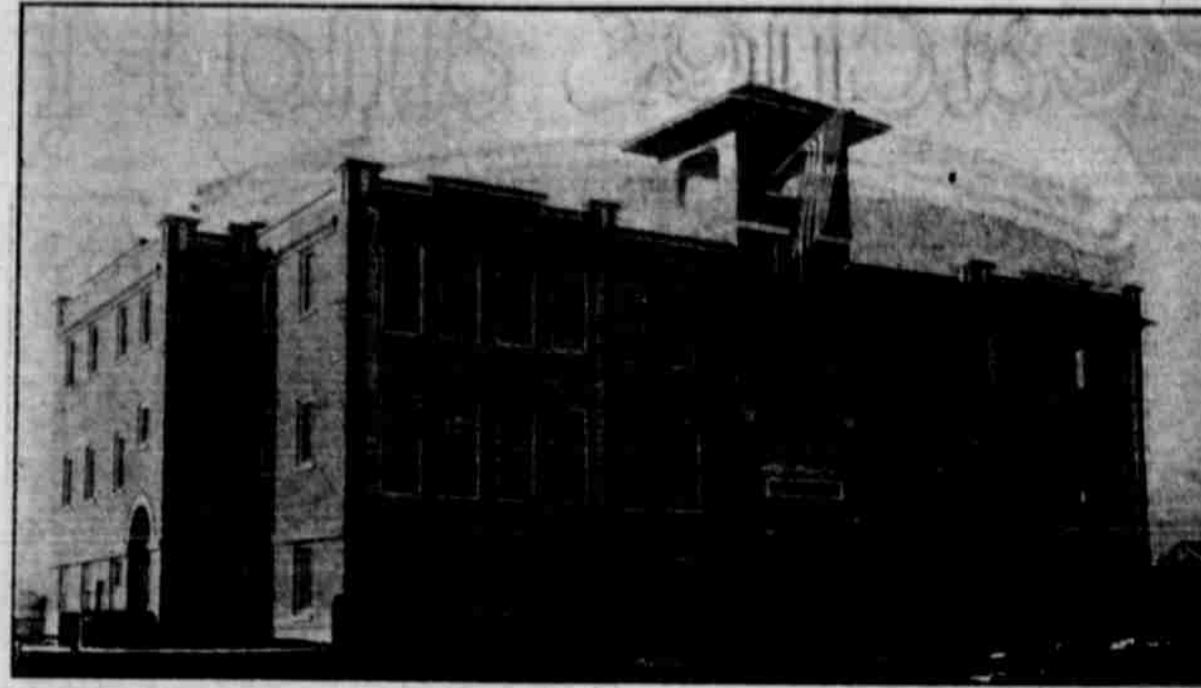
### Central Point

Unique in location and environment, Central Point possesses many advantages not enjoyed by other sections of southern Oregon. While in no way a rival of her sister cities, towns and villages in the valley and with only good will for all of her neighbors and their cherished hopes and ambitions, her people are strong in the belief that their town has a bright future ahead.

Where only a few years ago was a straggling country village "unknown, unlettered and unsung," without civic pride or public improvements, today stands a modern little city of 1500 people (third in population and wealth in Jackson county), whose progress and enterprise have made this change possible. A complete and modern water system with eight and one-half miles of steel mains, supplies every platted portion of the city with an abundance of pure, ice-cold water.

A modern combination storm and sanitary sewer system with mains and laterals covering almost nine miles, provides perfect sanitary conveniences and makes possible modern living conditions second to those of no city in the country. Paved streets have also been demanded and secured by the people and within the

## No Finer Public Schools Are Found Anywhere Than in the Cities of the Rogue River Valley



Talent Public School.

past few months some 30,000 square yards (covering 11 blocks in the business section) of first class asphalt having been laid.

Prosperity has reigned in Central Point during the past year. Most of the business firms report an increased volume of business over last year, in some cases the phenomenal increase of from 50 to 75 per cent being reported.

### Butte Falls

Butte Falls, the coming lumber center of Jackson county, is the present terminal of the Pacific & Eastern railroad, a part of the Hill system, in the heart of the largest sugar pine belt in the world. Tributary to Butte Falls is eight billion feet of standing timber. The railroad will be extended to a connection with the Oregon Trunk, thus giving a transcontinental line to the east.

Big Butte river, upon which Butte Falls is located is one of the finest power streams on the coast—a power that is already being utilized to operate lumber mills, of which there are half a dozen scattered through the district.

Opportunity beckons the home-seeker and the manufacturer to Butte



Jacksonville Public School.

Falls. The adjacent region is rich in natural resources. The cleared forest land is the best orchard soil in the valley. Timber awaits the millman, for sash and door and box factories, for paper mills and for furniture manufacturers. Large deposits of clay and fire brick clay await utilization for brick and tile factories and quarries contain fine building stone.

Good mill sites can be secured for either small or large mills. Good farm land can be purchased at \$20 an acre and up. There is a good opening for a live and progressive banker.

Butte Falls has a fine, pure mountain water system, an up-to-date public school system with an accredited high school, and many of the advantages commonly secured only in larger towns.

### Talent

In the last few years that the valley has become famous Talent has been taking on a gradual growth and it is now getting to the place that it will take a faster and more permanent growth.

There are over 750 inhabitants within the town limits and the immediate country surrounding it the most thickly settled rural district in the Rogue river valley.

Talent was incorporated recently and since then a new interest has been manifest and all building that has been done since is of a creditable kind, and will aggregate \$100,000, which is an increase in building of a large per cent.

Talent has completed a water supply, at a cost of \$15,000, which is very reasonable for a good system.

Talent is furnished with both gas and electricity for both heating and lighting purposes. The Rogue River Gas company furnishes the gas and the Jackson County Electric Light and Power company, with their sub-station at Talent, do a general light and power business and handle all kinds of electrical appliances for all purposes.

The school was recently placed in the best of condition, a new building having been erected at a cost of \$24,000, nothing having been spared to make it modern and sanitary, and the finish is of high grade, being the best finished school building, with the exception of one, south of Eugene, in Oregon. There are six acres in the grounds, giving plenty of room for playgrounds and agricultural training.

### Gold Hill

Gold Hill has a natural site for a city, built as it is one of the banks of Rogue river, at the gateway to the wonderful valley of the same name. The setting for a city is here—picturesque and inspiring—and if the law of natural development works as it should, the setting will some day, and that not far distant, be filled by a city such as southern Oregon may not boast of at present. The town takes its name from Gold Hill mountain, so called because nearly half a million dollars was taken from a ledge at a point near its summit in the early fifties.

Since its founding in 1884 Gold Hill has grown to a population of six or seven hundred. A handsome brick and cement high school building was recently completed at a cost of \$20,000. The school itself, which included complete high school and business courses, is in a flourishing condition.



Butte Falls Public School.



Rogue River Public School.

Gold Hill has cement sidewalks, electric lights, sewers and city water.

### Phoenix.

Over 50 years have passed and gone since Samuel Calver unpacked his jaded oxen, and ended a long march that blazed the trail of empire to the western sea, and even to this day, that great exodus remains a story but half told of men

of iron and red blood who faced an unknown desolation and read their destiny in the setting sun. Their toll and hardships have long been justified and all but a few of those heroes have crossed the last divide.

The Indian and buffalo live only in song and story, and empire rests

(Continued on Page 5)

## Large Cannery, Completely Equipped, Established at Talent

During the past year the Bagley Canning company was organized at Talent to fill a long felt need in the valley.

The nucleus of this company was created during the season of 1911, when with a small steam cooking outfit located on Bagley ranch, over seven hundred cases of fruit and vegetables were canned. This venture more firmly impressed the first opinion of the great benefit to the community to be derived from this industry. Rather late in the season of 1912 a number of public spirited men united and formed the present company, which was incorporated in June and the process of canning and drying was begun in August while the mechanics were still constructing the plant. With the idea of making merchantable the waste now going on in connection with the fruit industry here, this plant was planned to combine in one, canning, drying, cider making, and attendant products as pasteurized cider, fruit butters, vinegar, etc. This combination has demonstrated its practicability. The dryer department takes care of much of the fruit too ripe for canning, and the vinegar department, which is just being installed takes care of the cull apples unused by the other departments.

### \$11,000 Invested

The investment to date in the plant amounts to over \$11,000.00, besides the land donated by the citizens of Talent, which cost them \$1,000.00.

Very soon now the company will start packing prunes, this will be the first prune processing and finishing plant in the valley, and the product on hand will make early three cars.

As arranged at present the plant can produce 6000 filled cans, 1200 pounds of dried fruit and 1000 gallons of cider daily.

The company have shipped to Portland five carloads of canned fruit, besides the equivalent of nearly two cars by local freight and team to valley points.

As a compliment to the pack, as well as to the quality of the Rogue River peaches, the company received 25 cents more per case for the whole peach pack in Portland than the market offered for any other peaches of the same class. These were gallon peaches.

The canning season closed Dec. 14th, though if the market should warrant the canning of apples might be resumed after January 1st.



The coming season the company hope to increase their present capacity, build a ware house with refrigeration equipment, and erect tent houses for the non-resident employees.

In planting the location of this industry it was apparent that one institution could not supply the demands of the valley, each division of territory made had something which recommended it. There were problems peculiar to the valley to be worked out. Talent was chosen for the first unit because of the variety of fruit and vegetables readily accessible. So much product was offered that the company could not get help enough to handle it. As high as forty were on the payroll at one time, and more were needed all through the peach and pear season.

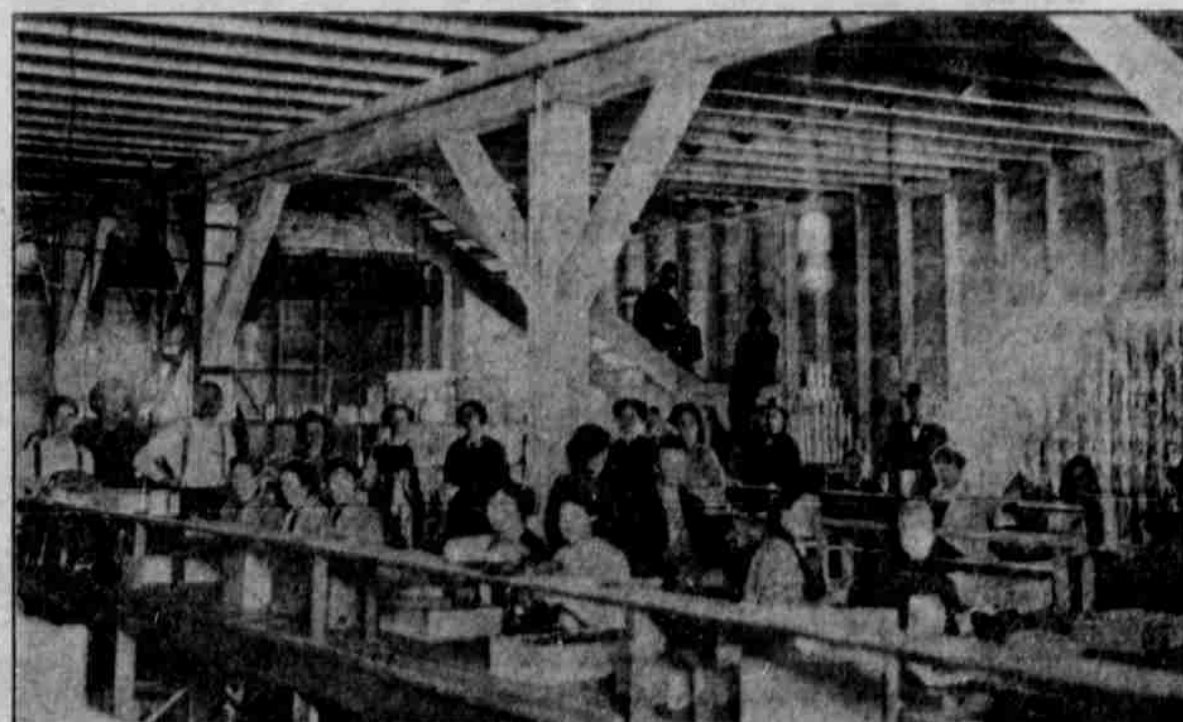
### Freight Rates Objectionable

There is this which may be said regarding this industry; whereas the cannery and allied accessories are a benefit, almost a necessity, the conditions found by the cannery are not ideal. In the first place we are subject to greater freight rates on all materials received or finished products shipped out than are other canneries. In the matter of fruit and

vegetables, the prices asked are in excess of those in other cannery districts. The variety of fruit, and in the instance of peaches, the most desirable varieties are not abundant enough in a given section to make a large and varied pack. These are real conditions which face any cannery locating in this valley. That they will be, must be, modified is certain from a cannery stand point. A 12 cent water rate to Portland from California points, and a 30 cent rail rate from here to Portland, must have as an offset at least an equal buying basis of the raw material. The meat of the matter is this; this valley needs canneries, and allied institutions because of their great economic value and because many times they will turn the tide of loss to gain by saving the crop.

The company is preparing to take a fruit census of a large of the valley, and it is hoped they will be given the hearty co-operation of the growers in this undertaking as it is important in planning for future growth. This census asks for location, hill or bottom land, variety, age and contemplated planting of the various fruits and amount of irrigated land in fruit or other crops.

The officers of this company are: A. C. Randall, president; R. H. Parsons, vice-president; Wm. R. Bagley, secretary and treasurer.



Interior and Exterior of Bagley Cannery at Talent.



Row of Residences at Eagle Point.



Type of House Being Built in Jackson County Towns.



One of Eagle Point's Many Brick Store Buildings.