

BIG DRAMATIC TREAT TONIGHT

"Rebecca of Sunnybrook Farm," Klaw & Erlanger's pre-eminent production headed by Ursula St. George, has arrived, and everything is in readiness for the performance tonight. Klaw & Erlanger, two master hands of the theatrical world, are giving us in this attraction the best that possibly can be given to a theater-going public.

Owing to the massiveness of the production the curtain will rise promptly at 8:10.

"Rebecca" ran for one solid year at David Belasco's theater, New York; nine months at the Tremont in Boston; and seven months at the Illinois theater in Chicago, and this is its first road tour, and within a short time it will have extended engagements in Europe and Australia, the same as it is now having in our own United States.

There is possibly only one attraction on the American stage today which equals it, and that is Klaw & Erlanger's "Ben Hur." From the first to the last scene the stage settings and environments are rich, colorful, and artistic. The light effects subtle impressive and beautiful. The same sort of substantial men, women and children who find delight in, and patronize "Ben Hur" like "Rebecca."

Such plays as "Rebecca" are like rare jewels, difficult to get into one's possession, and then not always recognizable to even the most intelligent mind until they have been examined under strong light, which in cases of plays is to be found in public presentations. The public is a merciless critic. Its palate is delicate, and must be tickled with the sort of dramatic dish that will not clog nor leave an unpleasant taste behind.

Roosevelt to Visit Granite State
BOSTON, Mass., April 4.—The fight between Taft and Roosevelt for the New England delegates to the Chicago convention will be renewed tomorrow, when Colonel Roosevelt will come up from New York to look over the situation in New Hampshire, where Governor Bass and his followers are struggling hard to capture the Granite state for the progressives. Colonel Roosevelt's program calls for speeches in Nashua, Concord and Manchester. President Taft spoke in the same cities two weeks ago.

SCENE FROM "REBECCA OF SUNNYBROOK FARM" AT THE MEDFORD THEATRE TONIGHT.



AWAIT ANSWER FROM TOWNE

The committee of business men appointed to confer with Robert S. Towne regarding the construction of a railroad to the Blue Ledge mine are awaiting an answer from the owner of the Blue Ledge before holding another session. Wednesday evening the following dispatch was sent Mr. Towne:

"At a meeting of 300 business men a committee of five was appointed to investigate conditions relative to building a railroad from Medford to Seattle Bar. Medford business men are ready to incorporate a company and begin construction at once upon assurance from you that you will construct a smelter or concentrating plant and operate the same by October 1, giving a minimum tonnage of 2000 tons per month. A positive statement from you is necessary to satisfy the subscribers to railroad stock. Medford awaits your answer by wire. (Signed)

W. H. CANON,
W. H. GORE,
J. D. BELL,
H. C. GARNETT,
J. E. REDDY."

If Mr. Towne's answer is satisfactory further conferences will be held at once and steps taken to start actual work on the railroad.

The committee is also discussing the matter of sending a large delegation of citizens to the mine in order that they may see for themselves the extent of the property.

SACRAMENTO, Cal., April 4.—State Forester Homans today stron-

ly endorsed the proposal of the newly organized forestry club at the University of California that the legislature appropriate \$10,000 or \$15,000 at the coming session to establish a course in forestry in that institution.

USE ALLEN'S FOOT-EASE

The antiseptic powder to be shaken into the shoes. If you want rest and comfort for tired, tender, aching, swollen, sweating feet, use Allen's Foot-Ease. Relieves corns and bunions of all pain and prevents blisters, sore and callous spots. Just the thing for Dancing Parties, Patent Leather Shoes, and for Breaking In New Shoes. It is the greatest comfort discovery of the age. Try it today. Sold everywhere, 25 cts. Don't accept any substitute. For FREE trial package, address Allen S. Olmsted, Le Roy, N. Y.

Havers Self Starting Six-44

Fully Equipped, Including Self-Starters, Top, Glass Front, Speedometer, \$2150 Portland

RIGHT kind of material, nickel-steel.
RIGHT kind of an engine—6 cylinders, 3-point suspension.
RIGHT kind of ignition, Bosch Dual.
RIGHT kind of radiator, honeycomb.
RIGHT kind of rear axle—full floating.
RIGHT kind of body, luxurious fore-door.
RIGHT kind of guarantee, one year by factory.
RIGHT kind of service.
RIGHT price—\$2150.

The Havers is sold for what it is, a well-made, dependable Automobile. It is sold at its real worth and guaranteed to be worth it.

MICHIGAN MOTORS CO.
H. A. Jones, Traveling Rep. Phone or call for demonstration Hotel Medford

NEARLY 4500 HAVE REGISTERED TO DATE

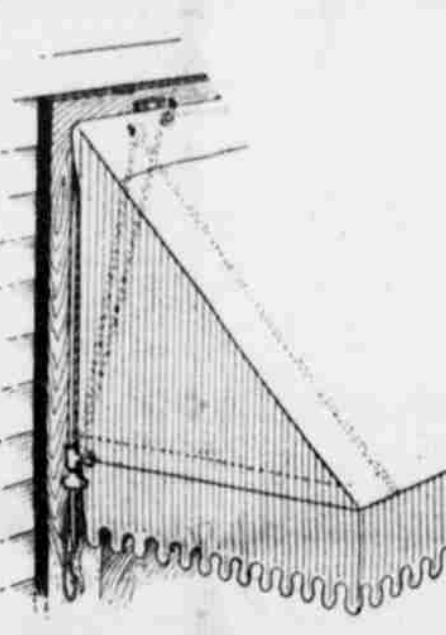
The number of voters signing the registration rolls is rapidly growing larger now that the close of the registration, April 9, is drawing near. Nearly 4500 have signed up to date. Of this number about 3000 are republicans and 1500 are democrats.

LOS ANGELES, Cal., April 4.—Champ Clark supporters will meet here Friday night to launch formally the Missouriian's active campaign in southern California. Headquarters for both men's and women's Clark clubs are open here today. Both organizations will take part in Friday's action.

SUPERVISORS ARE GIVEN INSTRUCTIONS

Most of the road supervisors in the county appeared before the county court Wednesday and were given instructions as to the work they are to do this summer, which consists principally of repairing roads. Road work will start soon.

CHICAGO, April 4.—Frenzied because the woman had married his rival, Calrence Carr, a man 56 years of age, went to the bedroom of Mrs. Emily Shaw today, where he cut her throat, wiling her instantly. Carr then cut his own throat. He is dying.



Medford Tent and Awning Company

Manufacturers of and Dealers in
AWNINGS, TENTS, FLYS, COVERS OF ALL KINDS
Duck—All Weights and Widths, Awning, Stripes, Etc.
WHOLESALE AND RETAIL
All Makes of Awnings and Porch Curtains put up at Manufacturers' Prices.
Agent for the
Moanoke Noiseless Ventilating Window Awning
106 N. Front St.
Both Phones. Medford, Oregon

Easter Post Cards 10 for 5c

We will put our entire line of Easter Post Cards, the largest and finest assortment in the city, on sale tomorrow and Saturday at, your choice 1¢ each or 10 for 5¢

Hosiery

The Best Hosiery Values in Medford

- Ladies black silk lisle gauze Hose, garter top, pair.....25¢
- Ladies' silk lisle tan Hose, pair.....25¢
- Ladies' white Hose, silk finish 4 thread heel and toe, pair.....25¢
- Ladies' outsize Benson Hose, garter top, pr.....25¢
- Misses' lisle thread Hose, black, tan or white, pair.....25¢
- Infants' lisle Hose, black, tan or white, pair.....25¢
- Infants' fine Maconi cotton Hose, black or tan, pair.....15¢
- Misses' Bear brand School Hose, 25c values, pair.....15¢
- Men's silk lisle Hose, black and tan, pair.....25¢
- Men's Bear brand black Socks, pair.....10¢

Men's black, silk hose, triple heel and toe, 25c a pair

We are closing out all our Ribbons. Regular 10c to 35c a yard qualities at 5c, 10c, 15c yard

Special Friday and Saturday, 25 per cen discount on all Cut Glass, Austrian Gold Decorated Glass and our entire line of Fancy Jardinieres.

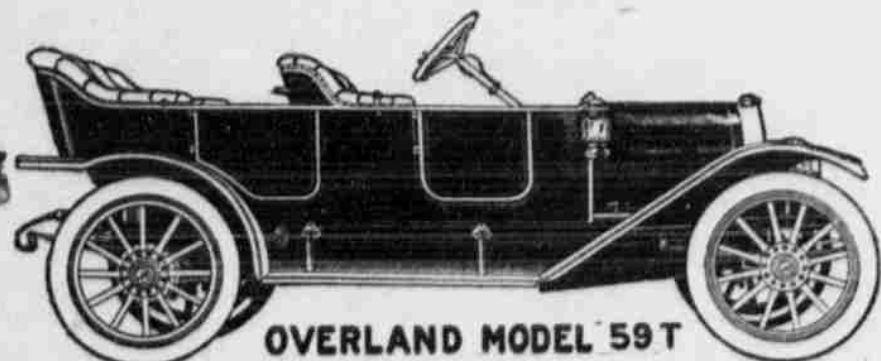
HUSSEY'S

OVERLANDS OVERLANDS

The Largest Shipment of Automobiles Ever Shipped into Medford

[R. R. Company will confirm this]

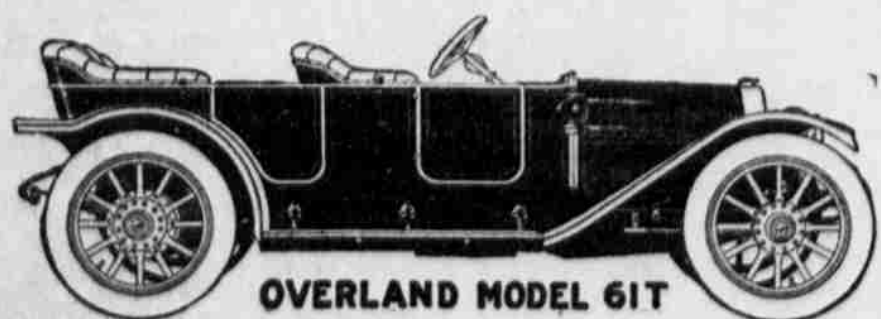
Four Passenger 60-F
Price \$1475



OVERLAND MODEL 59T

SPECIFICATIONS MODEL 59-T—PRICE \$1150

Wheel base—106 inches. expanding, external contracting.
Body—Five-passenger, fore-door touring.
Motor—4x4 1/2.
Horsepower—Thirty.
Transmission—Selective, three speeds and reverse.
Ignition—Dual, Splitdorf magneto and batteries.
Brakes—On rear wheels, 2 inches wide, 10-inch drums, internal



OVERLAND MODEL 61T

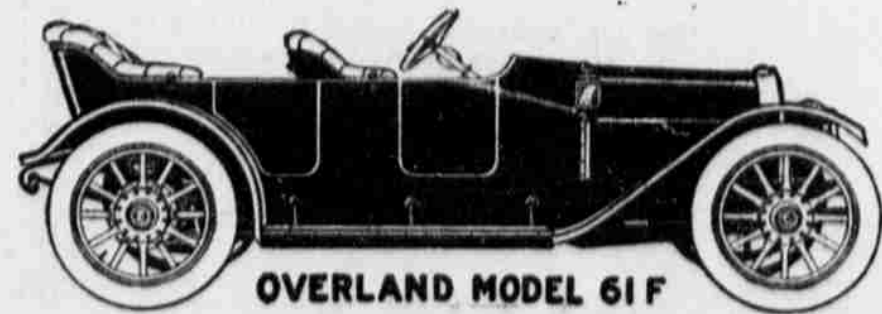
SPECIFICATIONS MODEL 61-T—PRICE \$1775

Wheel base—118 inches.
Body—Five-passenger, fore-door touring.
Motor—4 1/2 x 4 1/2.
Horsepower—Forty-five.
Transmission—Selective, three speeds and reverse.
Ignition—Dual, Splitdorf magneto and batteries.
Brakes—On rear wheels, 2 1/2 inches wide, 14-inch drums, internal expanding, external contracting.
Front axle—Drop forged I-section

This shipment consists of
Three, 30 H. P. 5-Passenger Touring Cars
One, 35 H. P. 4-Passenger Torpedo Body
One, 45 H. P. 4-Passenger Torpedo Body
One, 45 H. P. 5-Passenger Torpedo Body

These cars are the handsomest cars ever shown in the Valley. This is the third shipment since February 10, 1912.

Three sold in one day--Tuesday April 2.
Call and see these wonderful cars.



OVERLAND MODEL 61F

SPECIFICATIONS MODEL 61-F—PRICE \$1775

Wheel base—118 inches.
Body—Four-passenger torpedo.
Motor—4 1/2 x 4 1/2.
Horsepower—Forty-five.
Transmission—Selective, three speeds and reverse.
Ignition—Duplex, Bosch magneto and batteries.
Brakes—On rear wheels, 2 1/2 inches wide, 14-inch drums, internal expanding, external contracting.
Front axle—Drop forged I-section, Timken bearings.

C. E. GATES

132 So. Riverside

Phone Pacific 1414