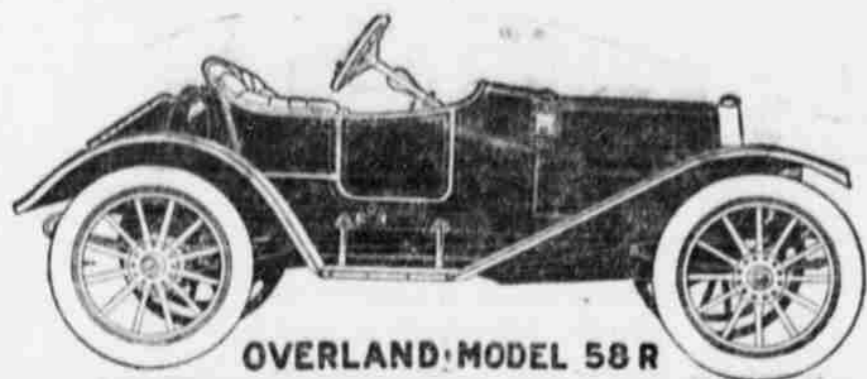


NINETEEN



TWELVE

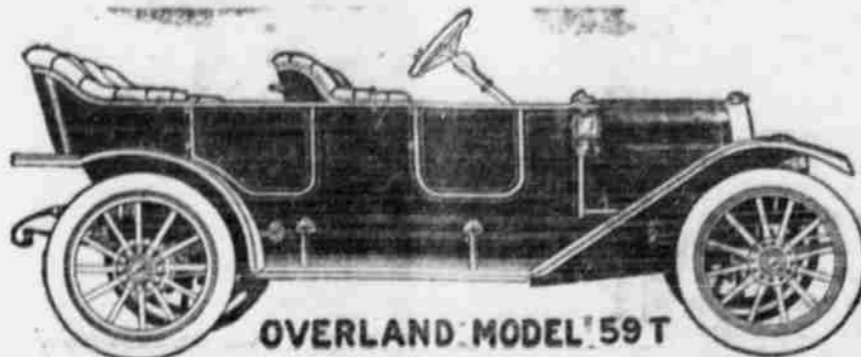


OVERLAND MODEL 58 R

SPECIFICATIONS MODEL 58-R—PRICE \$1100

Wheel base—96 inches.
Seating capacity—Two passengers.
Body—Torpedo Roadster.
Motor—3 1/2 x 4 1/2.
Horsepower—Twenty-five.
Transmission—Planetary.
Ignition—Dual, Spittdorf magneto and batteries.
Brakes—On rear wheels, 2 inches wide, 10-inch drums, internal expanding, external contracting.

Front axle—Drop forged I-section.
Rear axle—Semi-floating.
Tires—32x3 1/2-inch Q. D.
Finish—Overland blue, gold stripes.
Equipment—Top, wind shield, speedometer, three oil lamps, two gas lamps, generator and horn.

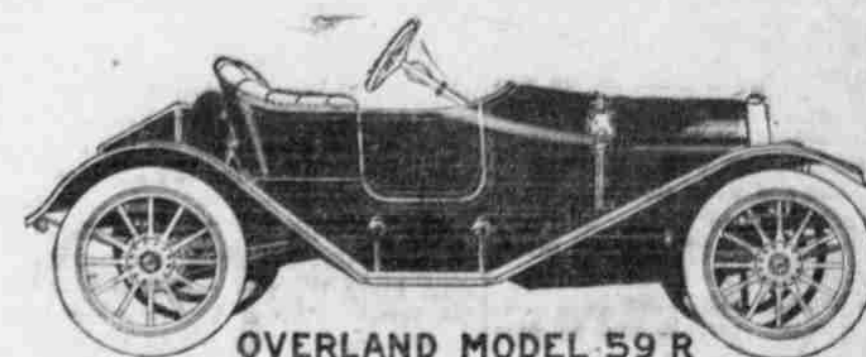


OVERLAND MODEL 59 T

SPECIFICATIONS MODEL 59-T—PRICE \$1150

Wheel base—106 inches.
Body—Five-passenger, fore-door touring.
Motor—4x4 1/2.
Horsepower—Thirty.
Transmission—Selective, three speeds and reverse.
Ignition—Dual, Spittdorf magneto and batteries.
Brakes—On rear wheels, 2 inches wide, 10-inch drums, internal expanding, external contracting.

Front axle—Drop forged I-section.
Rear axle—Semi-floating.
Tires—32x3 1/2-inch Q. D.
Finish—Overland blue, gold stripe.
Equipment—Top, windshield and speedometer, three oil lamps, two gas lamps, generator and horn.



OVERLAND MODEL 59 R

SPECIFICATIONS MODEL 59-R—PRICE \$1150

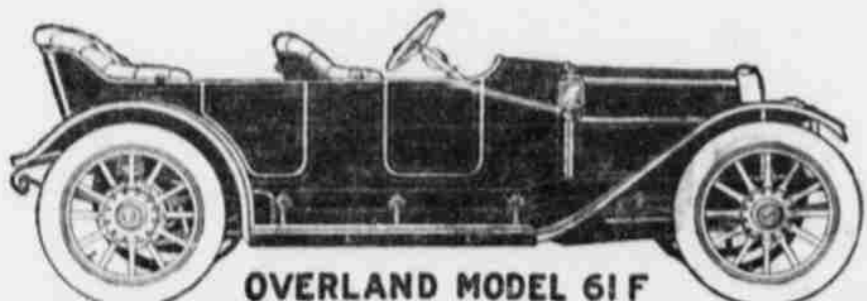
Wheel base—106 inches.
Body—Two-passenger torpedo roadster.
Motor—4x4 1/2.
Horsepower—Thirty.
Transmission—Selective, three speeds and reverse.
Ignition—Dual, Spittdorf magneto and batteries.
Brakes—On rear wheels, 2 inches wide, 10-inch drums, internal expanding, external contracting.

Front axle—Drop forged I-section.
Rear axle—Semi-floating.
Tires—32x3 1/2-inch Q. D.
Finish—Overland blue, gold stripe.
Equipment—Top, windshield and speedometer, three oil lamps, two gas lamps, generator and horn.

Four Passenger 60-F Price \$1500

Wheel base—114 inches.
Body—Four-passenger, fore-door torpedo.
Motor—4 1-8x4 1/2.
Horsepower—Thirty-five.
Transmission—Selective, three speeds and reverse.
Ignition—Dual, Remy model "S" magneto and batteries.
Brakes—On rear wheels, 2 inches wide, 12-inch drums, internal expanding, external contracting.

Front axle—Drop forged I-section, Timken bearings.
Rear axle—Semi-floating.
Tires—34x4-inch Q. D.
Finish—Overland blue, gray gear and wheels.
Equipment—Top, windshield, speedometer three oil lamps in black and brass finish two gas lamps, generator and horn.



OVERLAND MODEL 61 F

SPECIFICATIONS MODEL 61-F—PRICE \$1795

Wheel base—118 inches.
Body—Four-passenger torpedo.
Motor—4 1/2 x 4 1/2.
Horsepower—Forty-five.
Transmission—Selective, three speeds and reverse.
Ignition—Duplex, Bosch magneto and batteries.
Brakes—On rear wheels, 2 1/2 inches wide, 14-inch drums, internal expanding, external contracting.
Front axle—Drop forged I-section, Timken bearings.

Front axle—Drop forged I-section, Timken bearings.
Rear axle—Full floating, Timken bearings.
Tires—34x4-inch Q. D.
Finish—Brewster green, Ivory stripe, all bright parts nickel plated.
Equipment—Top, windshield, speedometer, self-starter and three black and nickel oil lamps, two black and nickel gas lamps with gas tank and horn.

TO the man who knows automobile values, these cars at these low prices speak for themselves. They need no explanation. But to the man who has never owned a car, and is now in the market for one, we simply ask him to compare what we have to offer with that of any other maker of the world, and the economy of buying an OVERLAND will be apparent, even to the novice.

Our line this year comprises 10 models—variety enough so that none need to look elsewhere. And they are thoroughly high grade automobiles—large, roomy and as well built as any of the highest priced cars on the market. They could be more elaborately made but not better.

We are the largest independent organization in the world. This year we will make 25,000 cars. As the production cost of an automobile is governed almost entirely by the quantity of cars a plant turns out, and the amount of its bonded indebtedness, we feel that it is a safe and sane statement to say that no other manufacturer in the business can turn out the efficient and powerful cars that we do and sell them at our prices without losing money. This is a fact—not a theory. The larger the production of a factory the more efficient and labor-saving automatic machinery can be operated. And this is what brings the price of an automobile down.

We are members of no trust or combination, nor have we one cent's worth of bonded indebtedness.

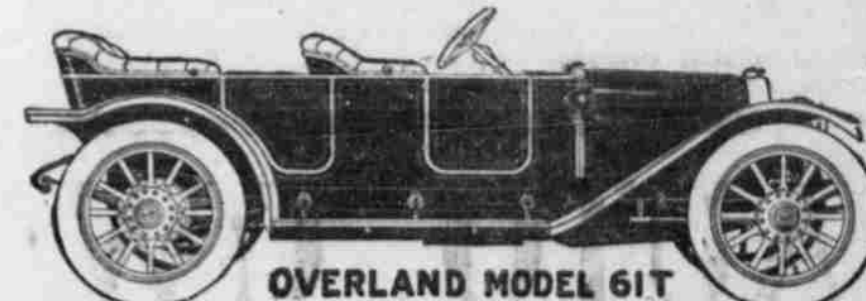
C. E. GATES AGENT

Phone, Pacific 1414 126 S. Riverside
MEDFORD, ORE.

Five Passenger 60-T Price \$1500

Wheel base—114 inches.
Body—Five-passenger, fore-door touring.
Motor—4 1-8x4 1/2.
Horsepower—Thirty-five.
Transmission—Selective, three speeds and reverse.
Ignition—Dual, Remy model "S" magneto and batteries.
Brakes—On rear wheels, 2 inches wide, 12-inch drums, internal expanding, external contracting.

Front axle—Drop forged I-section, Timken bearings.
Rear axle—Semi-floating.
Tires—34x4-inch Q. D.
Finish—Overland blue, gray gear and wheels.
Equipment—Top, windshield and speedometer, three oil lamps in black and brass finish, two gas lamps, generator and horn.

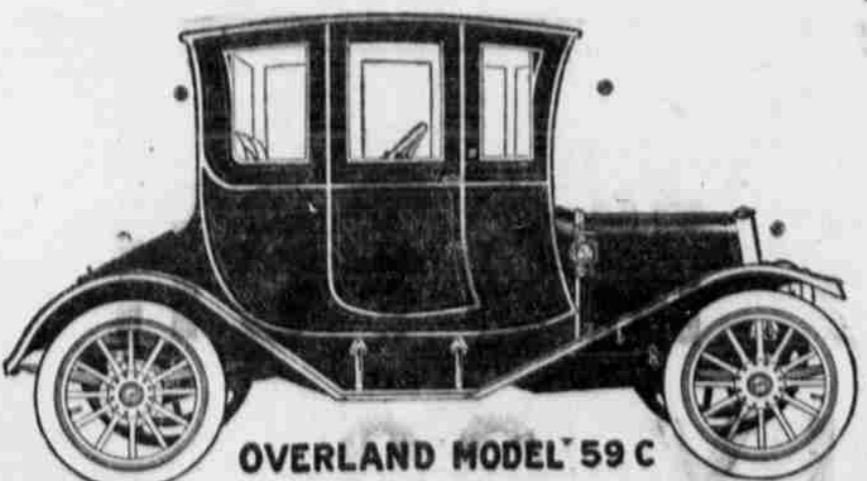


OVERLAND MODEL 61 T

SPECIFICATIONS MODEL 61-T—PRICE \$1795

Wheel base—118 inches.
Body—Five-passenger, fore-door touring.
Motor—4 1/2 x 4 1/2.
Horsepower—Forty-five.
Transmission—Selective, three speeds and reverse, and batteries.
Brakes—On rear wheels, 2 1/2 inches wide, 14-inch drums, internal expanding, external contracting.

Front axle—Drop forged I-section, Timken bearings.
Rear axle—Full floating, Timken bearings.
Tires—34x4-inch Q. D.
Finish—Brewster green, Ivory stripe; all bright parts nickel plated.
Equipment—Top, windshield, speedometer, self-starter and three black and nickel oil lamps, two black and nickel gas lamps with gas tank and horn.

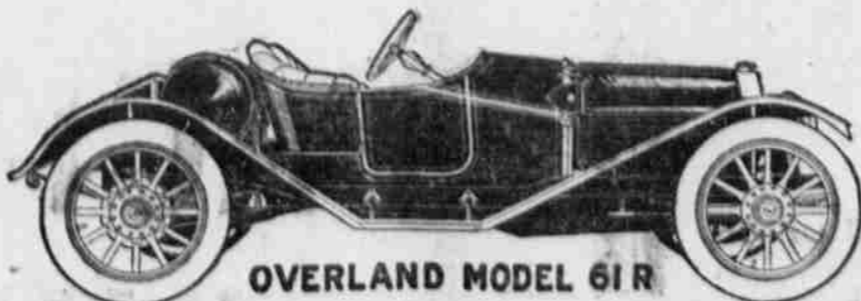


OVERLAND MODEL 59 C

SPECIFICATIONS MODEL 59-C—PRICE \$1500

Wheel base—106 inches.
Body—Three-passenger coupe.
Motor—4x4 1/2.
Horsepower—Thirty.
Transmission—Selective, three speeds and reverse.
Ignition—Dual, Spittdorf magneto and batteries.
Brakes—On rear wheels, 2 inches wide, 10-inch drums, internal expanding, external contracting.

Front axle—Drop forged I-section, Timken bearings.
Rear axle—Semi-floating.
Tires—32x3 1/2-inch Q. D.
Finish—Overland blue, gold stripe.
Equipment—Three combination oil and electric lamps, dome light and storage battery, two gas lamps, generator and horn.



OVERLAND MODEL 61 R

SPECIFICATIONS MODEL 61-R—PRICE \$1795

Wheel base—118 inches.
Body—Two-passenger torpedo roadster.
Motor—4 1/2 x 4 1/2.
Horsepower—Forty-five.
Transmission—Selective, three speeds and reverse.
Ignition—Duplex, Bosch magneto and batteries.
Brakes—On rear wheels, 2 1/2 inches wide, 14-inch drums, internal expanding, external contracting.

Front axle—Drop forged I-section, Timken bearings.
Rear axle—Full-floating, Timken bearings.
Tires—34x4-inch Q. D.
Finish—Brewster green, Ivory stripe, all bright parts nickel plated.
Equipment—Top, windshield, speedometer, self-starter and three black and nickel oil lamps, two black and nickel gas lamps with gas tank and horn.



OVERLAND MODEL 61 C

SPECIFICATIONS MODEL 61-C—PRICE \$2250

Wheel base—118 inches.
Body—Four-passenger coupe.
Motor—4 1/2 x 4 1/2.
Horsepower—Forty-five.
Transmission—Selective, three speeds and reverse.
Ignition—Duplex, Bosch magneto and batteries.
Brakes—On rear wheels, 2 1/2 inches wide, 14-inch drums, internal expanding, external contracting.
Front axle—Drop forged I-section, Timken bearings.

Rear axle—Full floating, Timken bearings.
Tires—35x4 1/2-inch Q. D.
Finish—Brewster green, Ivory stripe, all bright parts nickel plated.
Equipment—Two electric pillar side lamps, one combination oil and electric tail lamp, dome light and storage battery, two black and nickel gas lamps with gas tank and horn.