

### CROWELL AND GOBLE INVEST

Local Business Men Purchase Tract on East Side Which They Plan to Dispose of on Easy Terms to Those Who Would Build Homes.

Judge W. S. Crowell and Dr. J. G. Goble have given further evidence of their faith in the future growth and development of Medford and the Rogue River valley by purchasing from Mrs. A. R. Phipps the beautiful and slightly "Laurelhurst addition" to the city of Medford.

This property lies just north of Queen Ann addition and is one block north of the Roosevelt school, fronting Roosevelt avenue on the west and East Jackson boulevard on the south. Most of this property is high and slightly and affords an excellent view of the city and valley.

It is a recognized fact that the east side is becoming a site for many fine homes and Laurelhurst is one of the finest owing to its close proximity to a modern school, the gentle slope of the ground toward the city and the paving on Roosevelt and Queen Ann avenues.

The new owners will put this property on the market on easy payments and with modern building restrictions.

### Y. M. C. A. SHOWS GREAT RETURNS

The state organizations of the Y. M. C. A. in its annual report says: "Six thousand young men and boys in the formative period of life were influenced through the various association agencies in the state of Oregon in 1911. A conservative estimate indicates that the average efficiency of each one was increased by at least 21 per cent. That would mean \$1,800,000 added to the wealth of the state in one year. About \$34,000 was invested for this purpose through the state committee and local associations—a return of \$53 on every dollar invested."

The report further states: "Based on his capacity to produce wealth, the capital valuation of the average young man or older boy is \$15,000. Some boys are worth about 15 cents; others, because of their character and intelligence, are worth much more than \$15,000 to the community in which they live. It is the business of the Young Men's Christian association to bring the 15-cent boy up to the \$15,000 class; and by religious, educational and physical development to make the average young man still more efficient and a more useful citizen."

**Negro Lynched.**  
MEMPHIS, Tenn., Feb. 16.—An unidentified negro assailant of a 16-year-old girl was lynched today by a mob at Raleigh, Tenn. After hanging him from a bridge the mob riddled his body with bullets.

### NOTORIOUS CROOK SOUGHT BY POLICE

San Francisco Authorities Have Dragnet Out for Man Who is Supposed to Have Operated the World Over.

SAN FRANCISCO, Cal., Feb. 15.—Declaring that under a score of aliases he is notorious on two continents as a forger and bigamist, police of this city and Oakland put out a dragnet for Dr. Milton Abraham, accused of having tried to cash a \$15,000 forged draft on the Central National bank of Oakland.

The police declare Dr. Abraham to be none other than "Sir" Harry Westwood Cooper, who was paroled from San Quentin in September, 1911, on the completion of a three years' term for forgery in San Francisco.

Paralleling his exploits in other cities all over the world, Abraham, or Cooper, is said to have sought to marry Miss Daisy Klim, superintendent of nurses at St. Anthony's hospital in Oakland, which he offered to buy for her to secure her affections. Miss Klim escaped him but, if the police belief is true, she would have been but one of many women who fell victims to the forger's wiles.

San Francisco police claim that Abraham or Cooper is one of the most notorious crooks of the day. They say that he arrived in Sydney, Australia, from England, in 1889. In 1891, they allege, he was arrested in Sydney under the name of Charles Ernest Chadwick and tried on two charges of obtaining money under false pretenses, having represented himself as heir to a vast estate in England. The charges, however, were dismissed.

In 1895, the police say, as Ernest Chadwick, he was sentenced to prison for 18 months for obtaining money under false pretenses. June 17, 1897, it is charged, he was married in Sydney to Helen Scott under the name of Henry West Cooper. He later deserted her to flee Brisbane.

According to the police, the man then married Bertha Ethel Young, in Brisbane, on June 12, 1896. August 22, 1896, he left with his wife for England, saying he was going to London to claim an estate. He left England, it is charged, in 1906, under the name of Dr. Cooper.

Abraham, as Cooper, according to the police, arrived in Philadelphia in 1896 and was tried there for depositing a worthless draft for \$50,000. A short time later, it is said Abraham went to Toronto, where he occupied the pulpit in the Presbyterian church. He then is alleged to have married Maud Van Paigen in Toronto under the name of Harry Westwood Cooper and went to Chicago. In June, 1897, he is alleged to have fleeced his Chicago landlady out of \$200 by forged drafts, then leaving for San Francisco.

Arriving in San Francisco the police say Abraham gave the name of Sir Henry Westwood Cooper, deserted his latest wife, and planned to elope to Portland with a Miss Fanning. In August, 1897, he is charged with having deposited a worthless draft for \$700 in the Crocker Woolworth National bank here.

### COMPANY FORMED TO OPERATE BRICKYARD

A company composed of Central Point men has lately incorporated and

taken over the Peter Enslee brick yard of Jacksonville, the capital stock of the company being \$25,000. The concern is incorporated under the name of the Jacksonville Brick and Tile company and it is proposed to manufacture brick, tile and other clay products. Stockholders in the new company are: C. J. Denton, who promoted and organized the company and

who will be the manager; A. L. Scheil, Dr. J. V. Anderson, Dr. Nichols and P. Enslee.

OAKLAND, Cal.—Horace Kearney yesterday sent the first aerogram from a flying machine. He flew up 300 feet, a wireless instrument on his machine, and easily sent messages to earth.

### FINNAMORE ESTATE VALUED AT \$14,000

The estate of the late David Finnamore has been appraised by W. C.

Leever, J. C. Pendleton and W. J. Freeman, who were recently appointed by the county court for that purpose. The estate, which consists of a valuable alfalfa ranch east of the Bear creek ford, near Central Point, and \$2000 or \$3000 in cash in a Medford bank, was appraised at about \$14,000. Ed Hanley is administrator of the estate.

# MANN'S SATURDAY SALE MANN'S

## New, Crisp, Up-to-Date Spring Goods

NEW GINGHAMS	NEW SILKS	NEW DRESS GOODS	NEW WASH GOODS
1000 yards beautiful new Gingham, fast colors, in plaids, stripes and checks, on sale Saturday, a yard <b>10c</b>	New Foulards and Messalines, all new patterns and shades, 75c values, on sale Saturday, a yard <b>48c</b>	New Hair Line Stripe Serges and Bedford Cords on sale Saturday, a yard <b>69c</b>	1000 yards beautiful new Figured Batistes, fast colors, worth 12 1/2c, on sale Saturday, a yard <b>8c</b>
32 inch Zephyr Gingham, fine cloth, good as most 25c values, on sale Saturday, a yard <b>16c</b>	"Cheneys" Spot Proof Foulards all new patterns, sale price, a yard <b>98c</b>	New Fancy Mixtures for spring suits on sale Saturday, a yard <b>59c</b>	New "Limons" for summer dresses, fast colors, on sale Saturday, a yard <b>15c</b>
Scotch Gingham, a yard <b>25c</b> Bordered Zephyr Gingham, a yard <b>35c</b>	32 inch "Tab" Silks for shirt waist suits, on sale Saturday, a yard <b>\$1.25</b>	Beautiful Fancy Stripes and Mixtures, the latest ideas for spring suits at, a yard <b>\$1.19</b>	Beautiful Tissues in Silk and Cotton Mixtures at, a yard <b>29c</b> Imported Japanese Crepes in all colors, a yard <b>20c</b>

## "LA VOGUE" SUITS AND COATS FOR SPRING ON SALE

SPECIAL	SPECIAL	SPECIAL	SPECIAL	SPECIAL
Best Dress Prints on sale Saturday, a yard <b>5c</b>	Best Oil Cloth on sale Saturday, a yard <b>19c</b>	72x90 Bleached Sheets, on sale Saturday, each <b>39c</b>	42 and 45 inch Bleached Pillow Slips, Saturday <b>11c</b>	Good heavy 10c Outing, on sale Saturday, yard <b>7c</b>
Womens and children's fast black Hose, a pair <b>9c</b>	Womens' Hose Supporters up to 50c values, pr <b>10c</b>	Womens' Wash Petticoat worth 75c Saturday ea <b>48c</b>	Womens' house dresses, \$3 quality, Saturday <b>\$1.75</b>	5000 yds. new Val. and Torchon laces up to 10c value, yd <b>3c</b>

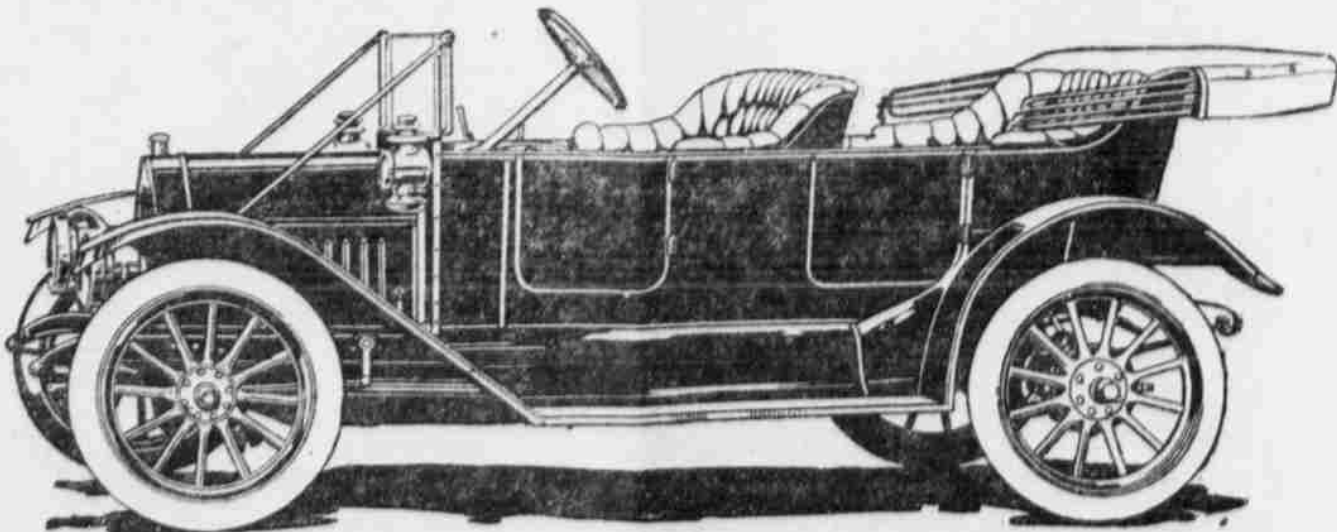
NEW WAISTS	NEW GLOVES	NEW TRIMMINGS	MUSLIN UNDERWEAR
Just received, our new "Perfection" Lingerie and Tailored Waists for spring. Special for Saturday, 200 Women's Shirts and Lingerie Waists, beautiful new styles, on sale all day Saturday <b>1.25</b>	Our celebrated F. W. L. Kid Gloves, \$1.25 grade, on sale Saturday, a pair <b>98c</b> We have added to our line the celebrated "Derby" Glove, every pair guaranteed <b>\$1.75</b> at, a pair	Complete line of Chenille and Ball Fringes at <b>48c</b> and <b>75c</b> yd. The best selection of Allover Laces in the city at <b>69c, 98c, \$1.19, \$1.48</b> and <b>\$1.98</b> a yard	Womens' Corset Covers, Drawers and Pants, up to 50c values Saturday, each <b>29c</b> Womens' Muslin Gowns, Drawers and Corset Covers, up to \$1 values Saturday, <b>59c</b> Womens' Muslin Skirts and Gowns, values up to \$1.50, on sale Saturday <b>79c</b>

# MANN'S SATURDAY SALE MANN'S

CENTRAL AVE. NEAR P. O.

## MODEL 29 BUICK

COME AND SEE THIS CAR AND SEVERAL OTHER MODELS AT THE BEAR CREEK MOTOR CAR CO. AND GET A DEMONSTRATION.



30-HORSEPOWER, 5-PASSENGER TOURING CAR, FULLY EQUIPPED—PRICE, \$1450.

DELIVERED ANYWHERE IN SOUTHERN OREGON IN THE SAME EXCELLENT RUNNING ORDER, AT THE SAME PRICE.

FRAME—Pressed steel, special construction, three and one-half inch drop.  
SPRINGS—Semi-elliptic front, three-quarter elliptic rear, with scroll ends.  
FRONT AXLE—Drop forged I-beam, with drop forged yokes, tie rod ends and steering spindles; front wheels fitted with extra large cup and cone ball bearings.  
REAR AXLE—Semi-floating type; special alloy steel axle shafts, running on special high duty roller bearings. Axle clearance, 11 1/2 inches.  
WHEELS—Wood, artillery type, with quick demountable rims. Extra large hub flanges.  
TIRES—34 x 3 1/2 inches.  
WHEEL BASE—108 inches.  
TREAD—56 inches (60 special when desired).  
MOTOR—Unit power plant, four cylinders, four cycle, valve-in-head type. Cylinders semi-steel analysis, cast in pairs; 4-inch bore, 4-inch stroke. Three bearing crank shaft with bronze backed babbitt lined bearings. Exceptionally large bearing surfaces.

COOLING—Water, circulated by gear driven centrifugal pump. Brass inlet and outlet water manifold. Radiator, vertical tube and plate type with large water capacity. Fan running on anti-friction bearings, belt driven from crank shaft pulley; center distance of fan pulleys easily adjusted to take up stretch in belt.  
IGNITION—Jump spark. Current supplied by Spitzko-Magneto and reserve set of dry cells.  
CARBURETOR—Schebler Model L, automatic float feed. Water jacketed.  
LUBRICATION—Automatic splash system. Oil uniformly distributed. Supply maintained by positive driven slow speed plunger pump with sight feed on dash.  
CLUTCH—Extra large leather faced aluminum cone; springs under leather to prevent harsh action.

TRANSMISSION—Sliding gear, selective type, three speeds forward and reverse; nickel steel transmission gears; heat treated. Chrome nickel steel transmission shaft, heat treated and ground. Clutch gear running on annular ball bearings; counter gear, nickel steel, heat treated, running on bronze bearings.  
DRIVE—Direct to bevel gears in differential. Drive shafts carried on high duty, nickel steel roller bearings. Differential gears nickel steel, specially heat treated. Teeth, corrected form, insuring uniform strength in both pinion and bevel gears.  
BRAKES—Emergency, internal expanding; service, external contracting. Both on rear wheel hubs. Very effective and positive, but entirely eliminating dragging and grabbing.

STEERING GEAR—Semi-irreversible; split nut, and worm type, fully adjustable; ball thrust bearing. Seventeen-inch hand wheel with inserted spider.  
CONTROL—Spark and throttle lever on top of steering wheel. Independent foot accelerator. Pedals for service brake and clutch; side levers for gear changes and emergency brake conveniently located inside of body and entirely enclosed.  
FINISH—Handsomely painted. Upholstered in extra fine quality black leather, over genuine curled hair and deep coil springs. Dash, three ply veneer, walnut finish. Running boards and front floor boards specially oil treated and linoleum covered, with heavy brass binding.  
EQUIPMENT—Oil side and tail lamps, gas head lights, horn, foot rest, robe rail, complete set of tools, high-grade mohair top, mohair rubber dust hood, wind shield, demountable rims and Presto-o-life tank.

BEAR CREEK MOTOR CAR CO., Eighth and Bartlett Streets, MEDFORD, OREGON