

MEDFORD MAIL TRIBUNE

AN INDEPENDENT NEWSPAPER PUBLISHED EVERY AFTERNOON EXCEPT SUNDAY BY THE MEDFORD PRINTING CO.

Entered as second-class matter at Medford, Oregon, under the act of March 3, 1879.

Official Paper of the City of Medford, Official Paper of Jackson County.

SUBSCRIPTION RATES: One year, by mail, \$5.00; Three months, \$1.50; Six months, \$2.50.

SWORN CIRCULATION: Daily average for eleven months ending November 30, 1911, 2751.

THE MAIL TRIBUNE IS ON SALE AT THE Ferry News Stand, San Francisco; Portland Hotel News Stand, Portland; B. W. M. News Co., Portland, Ore.; W. O. Whitney, Seattle, Wash.

MEDFORD, OREGON: Metropolitan of Southern Oregon and Northern California, and the fastest-growing city in Oregon.

BANNER FRUIT RIVER IN OREGON—Rogue River ripens apples from sweepstakes prize and title of "Apple King of the World".

Spokane will appoint three women policemen without pay.

A Montana man said \$85,000 for a Corot and his wife said, "That's too much for a vegetable."

A Fargo man, who has five wives, has been arrested for stealing \$10,000 worth of butter.

While eastern brewers are considering raising their own hops, southern planters continue to raise cane.

It was queer how many local legal lights could be seen on the streets the day after the bond election telling their friends, "It bears out just what I have said all the time," etc., etc.

PARIS, Jan. 30.—Dead from starvation, the body of Varian Stuart Gombault, grandniece of Admiral John Paul Jones, was found in her room in a cheap lodging house here.

INDIAN MINERS FAIL TO REACH AGREEMENT: INDIANAPOLIS, Ind., Jan. 30.—Way in the coal fields is admitted to be a probability here by both miners and operators, who have failed to reach an agreement on wages in the joint conferences which have been proceeding for several days.

TERRORIST CAMPAIGN IS WAGED IN CHINA: TIEN TSIN, Jan. 30.—As a first expression of the rebel determination to start a terrorist campaign against the Manchus, a bomb here today shattered a part of the vice regal residence, and an hour later three imperial generals barely escaped assassination.

FOR NATIONAL HIGHWAYS.

AT THE National Good Roads convention held recently in Washington, D. C., an active campaign was launched for national aid for highways.

The highways system, as laid out, consists of six main highways, thirteen trunk highways and forty link highways, connecting the mains and the trunks, and reaching out in all directions until the country as a whole is covered with almost a spider-web tracery of roads.

The main highways contemplated in the plans are: The northern, from Boston to Seattle, a distance of 3875 miles; the central, from Washington to San Francisco, 4025 miles, and the southern, from St. Augustine to San Diego, 3375 miles, or a total of east and west main highways of 11,275 miles.

The trunk highways proposed by the association are the Appalachian, between Albany, N. Y., and Mobile, with a length of about 1575 miles; the Canada-Gulf, from the Red river of the North to New Orleans, 1700 miles; the Great Lakes-Atlantic, from Chicago to Charleston, S. C., 1025 miles; the Great Lakes-Gulf, from Chicago to Appalachicola, Fla., 1300 miles; the Lake-Mountain-Pacific, from Chicago to Los Angeles, 2950 miles; the Missouri-Arizona, from St. Louis to Phoenix, 1775 miles; the northwest, from Chicago to Billings, Mont., 1500 miles; Oklahoma-Carolinas, from Guthrie to Beaufort, 1475 miles; the Puget-Gulf, from Seattle to Galveston, 1925 miles; the Rocky Mountain, from Fort Assiniboine, Mont., to El Paso, 1250 miles; the Santa Fe, from Kansas City to San Francisco, 2450 miles; the Southwest, from Philadelphia to Laredo, Texas, 2475 miles, and the Texas-Atlantic, from El Paso to Wilmington, N. C., 1900 miles. Total, 23,300 miles.

The forty link highways in the proposed system are designed to connect the mains and the trunks of the highway network and aggregate 10,825 miles, the total for mains, trunks and links being 51,025 miles, approximately. The association states that the more than 50,000 miles of highway contemplated in the original plans are merely a beginning, and that the system is intended to be the basis of a network of interstate and intrastate roadways that will cover the entire country and afford adequate communication between all sections.

As the average cost per mile of properly constructed permanent highway is about \$5000, it will be seen that the cost of the proposed highway system would be something like \$255,125,000. The system proposed as a national one—not state highways, with national aid or without it, but a broad and comprehensive system of national highways, built, owned and maintained by the national government, in the same way that France makes, owns and maintains its national road system, the best in the world.

HIGH SCHOOL IS ACCREDITED

University of Pennsylvania Will Admit Graduates of Medford High School With an 80 Per Cent Standing, Without Examination.

Medford high school has been accredited by the University of Pennsylvania on an average of 80 per cent, the students having these grades being admitted without entrance examination.

Superintendent Collins received a letter from Dean Fisher of Pennsylvania yesterday, advising this school of its success. Pennsylvania is a member of the "big four" and this is the entering wedge for Medford high to be accredited in the others.

Nothing could be further from fact. Medford high school is among the foremost schools in the state, and is rapidly advancing under the efficient work of Superintendent Collins.

Six months ago Cornell university placed the school on the accredited list, and Pennsylvania now has followed suit. It is but the course of a month or two until Harvard and Yale will recognize the local high.

WIDOW OF WATCHMAN BECOMES A MANIAC

NEW YORK, Jan. 30.—Helpless and hungry and with her husband's body still dangling from the top of the workers have been too busy looking for gold buried in the vaults to recover it, Mrs. Frank J. Neider, widow of a watchman for the Mercantile Trust company, who lost his life in the fire that destroyed the Equitable building, is a raving maniac today.

Mrs. Neider was found shrieking and crying in her home in the Bronx, in the belief that she was trying to get the heavy beams and twisted girders from her husband's body.

NOTICE TO MINE OWNERS. All persons who are desirous of securing space in the Medford Mining Jubilee Book on the mineral resources of southern Oregon and northern California, to be issued Feb. 1, 1912, should immediately call upon or address C. W. Patterson or Guy T. Thrasher, Nash hotel, Medford, Ore.



It Takes Expert Work to Prepare a Good Abstract. Yes—it takes more than this—it takes equipment—capital—training. That's why our abstracts are preferred by attorneys—because we make—

Abstracts That Are Absolutely Reliable. When you buy or loan money on property—if you'll have us prepare the abstract and have it passed upon by a reliable attorney, you need have no fear regarding the condition of the title to the property.

Jackson County Abstract Company. Corner 6th and Fir Sts. North Mall Tribune Bldg. Medford, Oregon. Dated Jan. 19, 1912. Thanks for health.

BENSON'S BARGAINS

We wish to impress you with the fact that we are

EXCHANGE HEAD-QUARTERS

Through us you can exchange what you don't want for what you do want.

17 acres raw land 1 mile from Phoenix, good soil; orchards on both sides. Price \$100 per acre, 1-2 cash, balance in 2 years at 6 per cent.

Improved 5 acre garden tract just outside city, house and barn. Price \$3500. \$1600 will handle.

40 acre tract in Lake county, Ore., rolling sage brush, soil sandy loam, 2 miles from Warner Lake, about 8 miles south of Prush. Will exchange for Medford property. Price \$1200.

5 1/2 million feet saw timber to exchange for other property or will sell, easy terms. Price, \$6400.

Vacant lots on Ross court and Whitman Ave., also 20 acres black sticky land near Eagle Point to exchange for unimproved property, not necessarily local.

\$25,000 worth of improved income property in Medford, one property practically in business district, to exchange for unimproved property or if incumbrance isn't due before 1914 might consider assuming.

10 acres in 13 year old Newtown apples within one-half mile of Medford. This orchard top notcher. Perfect condition. Price \$1500 per acre.

27 acres in young pears and alfalfa about 4 miles from Medford, near Barrall orchard. Price \$7200.

29 acres 2 1/2 miles out, 12 acres in 8 year old Newtown, good soil. Price \$275 per acre, easy terms. Will consider exchange.

Rooming house, 12 rooms, 9 bedrooms, 6 furnished, close in. Price \$3000, includes building, lot and furniture. Would exchange for alfalfa land. This property is unimproved.

New 5 room bungalow on Riverside, rents for \$275, includes 2 lots, also 2 lots opposite Queen Anne school to exchange for alfalfa land. This property unimproved.

Homestead relinquishment 9 miles from Medford, about 80 acres tillable. Price \$600.

Seattle income property, valued \$1500, will exchange for cheap ranch.

6 room modern house, close in on Grape st., unimproved, to exchange for land suitable for general farming, no sticky. Price \$3500.

Rooming house furniture and lease for sale or will exchange for real estate.

Will exchange real estate for automobile.

Will exchange retail business in Medford for real estate.

HE HAD TO DO IT.

Wants cash quick, so we get the order to quote price that will make even the miser show up when he hears of it. Listen: The price was \$2150. Is now \$1150 and at that you need only part with \$450 now, the rest in 8 months.

You should be awake real early to get this. \$5000 home was. It now is \$2200. Bring \$700 in gold with you, assume the rest.

Once more: 6 lots all in a row. Price it was \$2400. Is now \$1200 cash. Our instructions were to pry you loose from a little real money. His loss your gain. Positively this is not a fake sacrifice sale, just business.

BENSON INVESTMENT COMPANY

REAL ESTATE - MINES 304 GARNETT-COREY BUILDING. Phones: Bell, 7901; Home, 32-K

Valley Second Hand Store

Buys and Sells Second-Hand Goods, Copper, Rubber, Brass, Etc. M. J. PILCKER, Prop. 15 North Fir Home 351 Bell 3072

Clark & Wright LAWYERS

WASHINGTON, D. C. Public Land Matters: Final Proof, Desert Lands, Contests and Mining Cases. Scrip. Associate Work for Attorneys

REAL ESTATE

Willamette Valley Farms of all descriptions. Garden and Fruit Lands, Timber Lands. Some excellent bargains in ALBANY CITY PROPERTY. Write or call on J. V. PIPE, 203 West Second St., Albany, Ore.

C. A. POE

For your Repairing of Plumbing and Pumpwork. Coils installed and guaranteed to give satisfaction. Estimates given on Water Supply Systems and Plumbing. No job too small or large. ALL WORK POSITIVELY GUARANTEED. No. 24 Fir Street South, Pacific 3702.

WOOD COAL

ANY QUANTITY BURBIDGE FUEL & TRANSFER CO. BOTH PHONES

PLUMBING

Steam and Hot Water Heating. All Work Guaranteed. Prices Reasonable. COFFEEN & PRICE. 25 Howard Block, Entrance on 5th St. Pacific 3031. Home 849.

Seattle Appraisals

Several Medford people have employed us to appraise Seattle real estate. Such appraisal is usually worth more than it costs. Ira J. Dodge of Medford was formerly connected with this office. Other Seattle and Medford references on request. R. C. ERSKINE & COMPANY. 206 New York Bld., Seattle (Charter Member Seattle Real Estate Assn.)

Medford Real Estate & Employment Agency

FOR SALE: 9 acres 1 1/2 miles out, \$7500. 20 acres at Eagle Point, \$2100. 20 acres 3 miles out, 18 a. to pear, \$3500. 25,000 acres for colony or subdivision. 130 acres in orchard, a first-class proposition. 80 acres, 40 in bearing orchard, 4 1/2 miles out. 160 acres 4 1/2 miles out, \$150 per acre. TRADE: Apartment house with 76 rooms in California. 40 acres 2 miles from Greeley, Colorado. Large dwelling in Grand Junction, Colo. 160 acres in Weld Co., Colo. I have land to trade in Kanan, Idaho, California, almost anywhere. List your property for sale or trade. I have parties who want furnished houses, also vacant ones.

We aim to handle and advertise only real bargains. MISCELLANEOUS: Horses for sale. List your property with us. EMPLOYMENTS: Waitress. Woman to cook on a ranch. Girls for general housework. E. F. A. BITNER. ROOMS 6 AND 7, PALM BLOCK Opposite Nash Hotel. Phone 4141; Home, 14.

WHERE TO GO TONIGHT

STAR THEATRE

Under direction of Peoples Amusement Company. ALWAYS IN THE LEAD. Motion Pictures Exclusively. 5—Big Photoplays Today—5. "A DIAMOND IN THE ROUGH" A Selig Masterpiece. "THE PROMOTER" A Story of Real Life. "A TRIP FROM COLORADO SPRINGS TO CRIPPLE CREEK" Educational Scene. "NORMA FROM NORWAY" An Interesting Tale Told on Two Continents. "STAGE STRUCK LIZZIE" A Real Live Comedy. AL SATHER In Song. "THE WOOLWORTHS" They Play Music and Effects to Suit the Pictures.

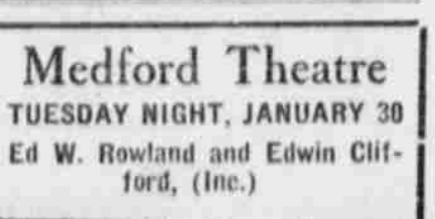
Your Own Good Judgment Will Acknowledge Our Superiority in Every Respect. Admission 10c, Matinee every day.

ISIS THEATRE

TONIGHT. A Big Double Bill 4 Days. Sunday, Monday, Tuesday and Wednesday. MISS ELSIE MUNDINGER. Introducing her beautiful musical illusion act. This is a decided novelty. Special scenery and electrical effects. Beautiful wardrobe and a sweet voice. BORANTO. Chinese Comedy Musical Act. The greatest Chinese impersonation and Human Xylophone. An act both instructive and interesting with special effects and imported wardrobe. This is the only actor in the world who plays and sings popular as well as Chinese music on all the instruments known to the flower kingdom.

Orchestra. Consisting of four pieces. The best music in town. Give us a trial. Once you come you will come again. Three reels 5000 feet of Fine Film. Special Matinee. Saturday and Sunday 2 p. m. Evening Performance 7 p. m.

Medford Theatre TUESDAY NIGHT, JANUARY 30. Ed W. Rowland and Edwin Clifford, (Inc.)



Offers the great New York, Chicago and Boston success by Edward E. Ross. THE ROSARY. Like the Poem and Song it will live forever. The most beautiful settings ever seen on any stage. Large Company of Exceptional Ability. Prices, \$1.50, \$1.00, 50c.

IF YOU OWN A LOT. We will build you a home on monthly payments. MEDFORD REALTY AND IMPROVEMENT COMPANY. M. F. and H. Co. Building.