

Building a Million Dollar Power Plant on Upper Rogue

Work is nearing completion on the new power plant being built at Prospect by the Prospect Construction company for the Rogue River Electric company, at a total cost, when completed, approximating \$1,000,000 and developing 40,000 horsepower.

The first contracts were closed and machinery ordered on March 15 last, and the preliminary surveys were begun and supplies and men got on the ground so that actual work was begun about April 10. The first thing necessary was a temporary plant to supply power for the hoists, derricks and air compressors necessary for the work of building the large plant. A site was selected near the Rogue river rapids and 300 feet of steel pipe put in, giving 130 feet fall and a small water wheel and dynamo installed, giving 250 horsepower. This temporary plant was completed May 15.

Work Under Way.

In the meantime camp supplies, tools and powder had been rushed to the site of the main power plant two miles below Prospect and work was begun there and at the same time surveys were made for the 50-mile pole line from Gold Ray to Prospect and for the flume two miles long to bring the water from the head gates to the point where the 500-foot drop to the powerhouse is begun.

The powerhouse is located in the Rogue River canon, 500 feet below the wagon road, where all supplies must be delivered, the rock walls at this point having an inclination of about 45 degrees. Down this incline the steel pipe, 1100 feet long and four feet in diameter, must go and as this pipe came in sections 30 feet long and weighing seven and one-half tons each, some provision had to be made for lowering this pipe as well as other heavy machinery.

Build Gravity Tram.

The problem was solved by building a balanced gravity tram with two cars, one on each end of a one and one-half inch steel cable, which runs around heavy pulleys at the top of the hill. The two cars balance each other, one car going up when the other goes down and the whole being controlled by an electric motor geared to the driving pulleys. The construction of this tramway is equal to a steam railway, 60-pound rails being used, the cars being standard gauge and built to carry 40 tons each. The steel hoisting cable has a breaking strain of 60 tons and loads of 10 to 20 tons are handled daily on this tramway.

After building the tramway and excavating trench for the pipe line the foundation for the powerhouse was begun. This foundation is a solid block of reinforced concrete, 50 by 80 feet, and 20 feet deep. It is re-



Site of Power House and Excavation for Drop Pipe—Great Fall Is Secured.

inforced by five carloads of steel rails run in all directions through the concrete and the entire foundation weighs 6400 tons.

Huge Timbers Used.

While the foundation was being built the timbers for the building were being framed, the longest of these timbers being 12 by 24 and 40 feet long. These timbers were put in place by derricks and 10 days after the foundation was completed the framework of the building was up, the roof on and the traveling crane to handle the heavy machinery in place.

At present the erecting crews are busy placing the machinery on the foundations. The apparatus for handling this heavy machinery has

been so arranged that a piece weighing 10 or 15 tons can be picked up by a derrick on top of the hill, set on a car, lowered down the tramway and picked up by the crane in the powerhouse and set on its foundation in about 20 minutes.

Work Is Rapid.

The pole line was completed in October, the flume and reservoir are built and all that remains to be done is to complete riveting the steel pipe line together and assemble and test the machinery in the powerhouse and the plant will be ready for operation and delivering current to the lines of the Rogue River Electric company.

The plant, as at present constructed, will have one generator and water wheel with an overload capacity of

10,000 horsepower. There will be space left for installing three more units, giving an ultimate capacity to the plant of 40,000 horsepower.

To build this plant required the hauling of 1400 tons of machinery and supplies, which was hauled by teams from 30 to 50 miles over mountain roads. Over 700 tons of this material had to be lowered 500 feet down into the canon to the powerhouse.

The pole line is of unusually heavy construction and designed for a voltage of 66,000 volts. The poles are 40 feet long and spaced 30 to the mile, the wires are number eight stranded aluminum cable and are carried on insulators 14 inches in diameter and weighing 33 pounds each.

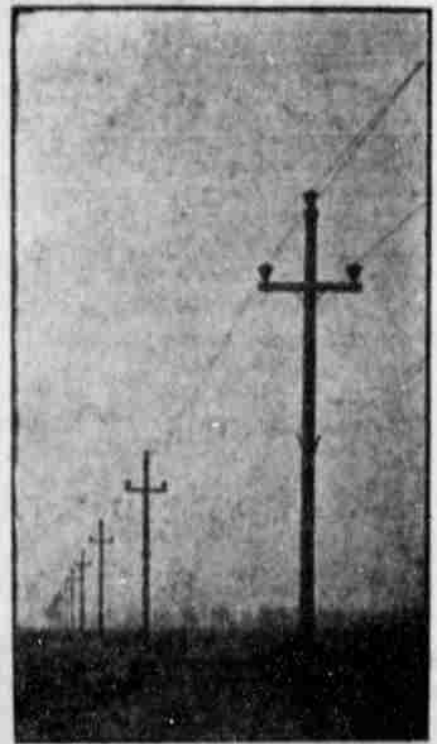
The work of building the Prospect plant has been handled by H. C. Stod-



Diverting Dam, Intake Gates and Initial Section of Flume, Showing How Water Is Diverted From the Main Channel.



Flume Carrying Water From Diverting Dam to Power Drop.



Electric Power Pole-Line.

dard, who has been general superintendent of the Rogue River Electric company for the last seven years.

Mr. Stoddard is vice president and general manager of the Prospect Construction company, of which company

Colonel Frank H. Ray is president and Dr. C. R. Ray is treasurer.

Mr. Stoddard has been ably assisted in the construction work by Mr. P. V. Cooper, resident engineer at Prospect, Mr. R. K. Smith, general fore-

man, and Mr. Paul Wright, chief millwright.

Mr. Al Tate had the contract for the freighting; Mr. E. G. Perham handled the Pole Line contract, and Mr. M. E. Young had the contract for the two miles of flume and the sawmill firm of Welch & Sons supplied the 3,000,000 feet of lumber required in the construction of the plant.

BIG RECEPTION HELD AT WHITE HOUSE TODAY

(United Press Leased Wire.)

WASHINGTON, D. C., Jan. 1.—Mr. Common People shook hands with Mr. and Mrs. President right in the White House today.

This is the "big reception day," when all comers, no matter how they may be dressed or what their station in life, may enter the White House

and be received by the chief executive, if they will stand in line long enough.

The Yale Glee club provided a special feature of the reception this year. They came with song and jest from the president's alma mater and they were given special consideration. A reception was arranged in their honor and the boys, in return, sang several specially composed pieces, in which President Taft figured as the subject of the songs.

It was the third time that President Taft and Mrs. Taft were hosts at the New Year's reception and this year Mrs. Taft's health was better

than on either of the former occasions.

PORTLAND, Ore.—Sam Bigelow is in jail today for stealing a horse and buggy, thanks to the telephone. Telephonic communications pursued Bigelow from Portland to Corvallis, 90 miles, where an officer took him into custody.

LAKEVIEW, Ore.—Joe Ambrose did not like the taste of his coffee. He gave it to his hogs and two of them died from strychnine poisoning. Ambrose is looking for the poisoner.

BUILD \$100,000 ALASKA CANNERY

Ed Hanley and F. H. Madden Constructing Huge Salmon Fishery Plant on Earnest Sound, Near Fort Wrangle, in Alaska.

Ed Hanley has left for Alaska where he will oversee the installation of a huge salmon cannery which he and F. H. Madden, also of Medford, are establishing 30 miles south of Wrangle on Earnest sound, at Point Worde, at a cost of \$100,000.

The buildings will occupy a piece of ground 100 by 180 in size. Construction will begin March 1 and includes besides the necessary buildings, a wharf. Machinery and boats have been purchased and an expert crew of operators and fishermen engaged. One hundred and fifty Indians will be employed in addition to Chinese and Americans.

The plant will be ready for operation by June, when the big run of fish is expected.

SENSATIONAL FINISH WINS GREAT RACE

(United Press Leased Wire.)

SAN FRANCISCO, Cal., Jan. 1.—In a sensational finish Bobby Vluet, captain of St. Mary's college, Oakland, today won a New Year's day cross-city run here from the Ferry building to Seal Rock house, covering the seven and three-fourths miles in 44 minutes, 10 seconds. The race was one of the most exciting ever witnessed in this city, and the result was in doubt up to the very last few yards. R. H. Lee of the Pastime club, winner of this year's Thanksgiving day race, held first place until he had almost reached the Ocean boulevard, when Vluet came up with a rush, passing Lee, who finished sixth.

M'CARTHY TO TVEITMOE: "I THINK YOU'RE INNOCENT"

(United Press Leased Wire.) SAN FRANCISCO, Cal., Jan. 1.—Mayor P. H. McCarthy, who has refrained from giving the newspapers an expression of his views on the arrest of the San Francisco labor lead-

ers, today sent the following telegram to Olaf A. Tveitmoe in Los Angeles:

"I sincerely regret the manner in which the federal authorities are endeavoring to involve you in the conspiracy matter. I believe you to be absolutely innocent of any crime and such belief will be my guide in connection with the matter."

INTERNATIONAL COMMISSION MAY STUDY COST OF LIVING

WASHINGTON, Jan. 1.—Looking to the establishment of a great international commission to study the cause and remedies for the high cost of living, and to evolve a world money system based on economic and scientific principles, a conference was held in Washington December 29,

Mining Congress Meets in Medford February 2-3

Returns on car of ore recently shipped from the Norling mine near Jacksonville by the Medford Mining and Milling Company, showing richness of this new mine.



Kentner's

Everything for Everybody

