

Eagle Point---Rebuilt and Progressive, Grows Rapidly

Eagle Point and the country tributary to the town are the first beneficiaries of the Hill system of railroads in Oregon, the town having been selected as the helper station, the location for the railroad shops and round houses, etc., and ultimately will be the division town, when the Pacific & Eastern road is extended in connection with the Oregon Trunk line, now terminating at Bend, Ore. By a little more than a 2 per cent grade the Cascade mountains will be passed from Eagle Point, and with the wonderful development in timber industries and fruit growing in the district, there can be no question that the tonnage tributary to Eagle Point will one day be equal to that of any town on the Hill system in Oregon.

Town Well Located.

Eagle Point is particularly well situated for residence purposes on the banks of the beautiful Little Butte creek, one of the finest streams in the West, and in an ideal location for traffic, some of the best fruit lands in the Rogue River valley being within a few miles. The fruit world well remembers the winning of the sweep-stake prize by Messrs. Tronson and Guthrie at the Spokane apple show of 1909. Well informed fruit men know that the same orchard which produced this car had produced equally good fruit each year for five years previously, had the owners seen fit to place it in competition. That fine orchard is located within two miles of the depot at Eagle Point, and at any time in the future either this or the noted Dr. Coghlan orchard alongside, can be counted on to win a sweep-stakes prize in red apples, while the equally famous Bradshaw orchard, about as far away to the south, can be counted on for a winning car of Newtowns, for which it has for so many years been famous. Equally good young orchards of both apples and pears are to be found on every side of Eagle Point, approaching maturity. This will be one of the greatest fruit shipping stations in Oregon within five years.

Many Small Fruits.

Not alone in apples and pears, but also in peaches, apricots and cherries, is the section to the front. There is a quality about the peaches produced here which induces many to be set in apple and pear orchards as fillers.

There is something in the alluvial soil deposited along Little Butte creek especially adapted to the growing of garden truck in a commercial way. The onions produced here are in a class by themselves in southern Oregon. The larger towns to the west look to the Eagle Point district for their supplies of berries and green stuff during the season from start to finish. The district is particularly well adapted to poultry farming as well, and for many years the mining camps and timber districts of northern California have looked to Eagle Point for their supplies of fresh ranch eggs. Back on the government reserves at the head of Rogue river and the two Butte creeks, thousands of cattle range and are brought down to the Eagle Point district to get the finishing touches of grain and alfalfa hay to fit them for market.

Manufacturing Sites.

Eagle Point is destined to play no small part in the manufacturing future of the Rogue River valley, owing to the water power available and to be transmitted or used direct from the channels of Rogue river and the tributaries above Eagle Point. The marvelous timber belt at the head of these streams, as yet untouched by the logger, is one of the main factors in tonnage producing, and is one of the many reasons why the Hill system has invaded the valley. Box factories, paper and pulp mills and wood-ware shops are among the early results to be expected, and after the timber is logged off, thousands of acres of the best fruit lands on earth will be available to perpetuate the transcontinental tonnage which will distinguish this section.

Not the least of the attractions of Eagle Point is the convenience of this location for outfitting for the summer trip to the mountains, and the close proximity to the best hunting and fishing in the state of Oregon. The traveler to Crater lake in his machine will find here the best accommodations in the valley, and already many make it a point to stop at the excellent hotels in Eagle Point, and make the rush to the lake in the exhilarating morning air. Those coming from the lake will find it well to time their trips to make Eagle Point their stopping place for the night, as less than one hour's time will place the traveler in the heart of the valley after an early breakfast at the Eagle Point hotels.

Bank Statement Good.

The prosperity of this section is shown conclusively in the growth of the Eagle Point bank, in business but little more than one year. Watch its next statement. Its resources have almost doubled since its last pub-



A Pioneer Firm in New Quarters.



A December Day at the Eagle Point Tavern.



Judge Stewart's Bungalow in New Town.



Eagle Point Depot, Pacific & Eastern Railway (Hill System).



Hon. J. J. Fryer, a Resident Since 1852. The Father of Eagle Point.

lished showing. It is all local money, and it will every dollar he used in developing the Eagle Point district. That's why Eagle Point wins out; her people pull together and assist in every progressive, worthy move. Eagle Point shed her chrysalis more than one year ago, when the town was incorporated, and during the year just closed 36 nice residences and business houses have been built, and many new ones are planned for 1912. Streets have been graded and gravelled, more than 15,000 feet of cement sidewalk have been laid, and preparations are now in order for paving and sewer and water systems. Partial water systems have already been installed in the residence districts, and the beauty of residences, lawns and shrubbery arrangement is noted by all. All the conditions are right for the best success in landscape gardening, growing shrubs and roses.

Eagle Point is rapidly winning recognition as a resort for those who are troubled with pulmonary complaints, asthma or hay fever. The altitude is just right for sensible treatment of all such troubles, and many are living in this section today for no other reason than that they are free from the inconvenience and danger lurking elsewhere. Attention is called to the "sweet summertime air" about the loungers on the hotel veranda. And yet this photo was secured on "just one of our ordinary December days," and it could be duplicated a month later in the season. Ask any man who has been in the valley a few years, and he will tell you "this Christmas is just like the first year I came to the valley." They all tell the same story, because the first year it impresses them the more. The fact of the matter is that each Christmas in the Rogue river valley is like a day in June elsewhere. You will come to Eagle Point ultimately; why not enjoy our fine climate

right away, and make a break for liberty of enjoyment at once? Write to the secretary of the Eagle Point Commercial club for full information on any topic which interests you. People who have lived at Eagle Point are its best advertisement. All will assure you that for social enjoyment, kind and courteous treatment, it has any other town in the west "skinned a mile." You want to enjoy life, fine climate and the companionship of the right kind of people. Get busy, and come to Eagle Point.

Suburban Tracts.

It takes people to make a city, and with the idea of making it an inducement to settle in the vicinity and help in the work of building up Eagle Point THE MOUNTAIN VIEW LAND COMPANY have platted and are now offering for sale on ground floor basis a number of five and ten acre tracts in this subdivision, on the high ground adjacent to Eagle Point, at prices ranging from FIFTY DOLLARS per acre and up. Of course, this offer will have its limits, but for the next few months our policy will be, "First Come, First Served." We don't ask anyone to gamble on the future, but where in the west does such an opportunity exist, adjacent to a live burg like Eagle Point? These tracts will soon be under pipe line, and for general attractiveness are not surpassed anywhere. Get in touch with us at once, and



Von der Hellen Bros., Hardware.



Frank Lewis, Confectionery.



Eagle Point Hardware Co., Near Depot.



A Field of Onions—For Which Eagle Point Is Famous.

share in the advance in prices impending.	1,137.60
Due to banks and bankers	250.16
Individual deposits subject to check	34,541.24
Demand certificates of deposit	523.24
Certified checks	200.00
Time certificates of deposit	553.29
Cash over	12.85
Total	\$47,168.38
State of Oregon, county of Jackson,	
I, J. V. McIntyre, cashier of the above-named bank, do solemnly swear that the above statement is true to the best of my knowledge and belief.	
J. V. MCINTYRE, Cashier.	
Subscribed and sworn to before me this 8th day of December, 1911.	
A. J. FLOREY,	
Notary Public.	
Correct—Attest:	
WM. VON DER HELLEN,	
J. F. BROWN,	
Directors.	
The system of highways converging at Eagle Point insures extensive commercial business for the town all	
Loans and discounts	\$14,363.70
Overdrafts, secured and unsecured	54.67
Bonds and warrants	15,477.16
Banking house	4,042.07
Furniture and fixtures	2,539.74
Due from banks (not reserve banks)	100.00
Due from approved reserve banks	6,712.53
Checks and other cash	
Items	34.00
Cash on hand	2,291.53
Expenses	1,552.48
Total	\$47,168.38
Liabilities.	
Capital stock paid in	\$ 9,850.00
Undivided profits, less ex-	



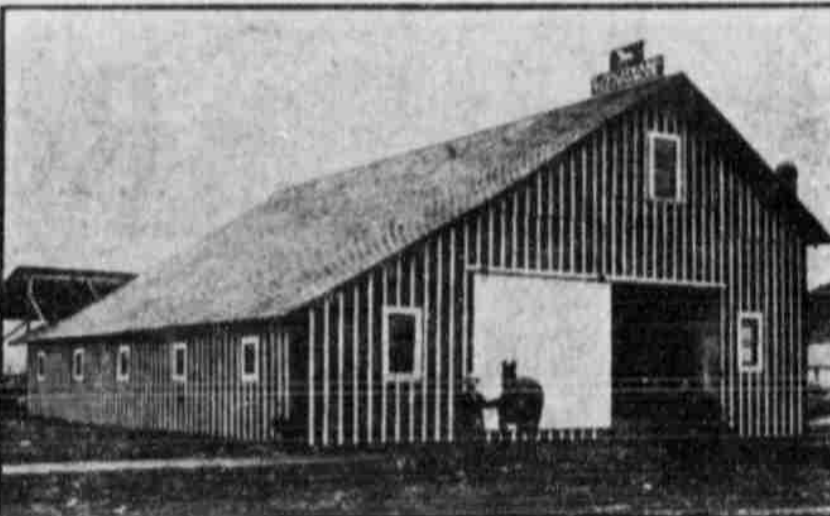
First State Bank of Eagle Point Building.



S. B. Holmes Residence, Built in 1911.



A Group of Residences, Eagle Point.



Sam Harnish's Livery and Feed Barn.

the time, and more or less jobbing trade, as much of the tonnage in consignments to Eagle Point is distributed to other supply stations even now. No less than four highways leading from as many bridges across Rogue river and one highway from the free ferry across that stream enter Eagle Point from the west, with a never ending stream of traffic, to say nothing of tourist travel; and make the town easy of access from the great Sam's valley section, the important Table Rock fruit district, the stock and timber districts on Trail and Elk creeks, north of the river, and the great timber plateau at the head of the river. Everything in the line of stock, timber, fruit and farm products produced in the Little Butte valley, the Big Butte valley, the Antelope valley and the great section lying east of Mount Roxy Anne, and shut off by that butte from the Bear Creek section, naturally gravitates into Eagle Point, and the Roguelands reclamation proposition will add greatly to the lands tributary to Eagle Point.

The amount of tonnage shown in 11 months' statistics at this date on the P. & E. railroad's books is very gratifying to the management of the new railroad, there having been consigned to Eagle Point merchants alone during that time more than 7,500,000 pounds of freight; and in addition, for residents of Eagle Point and distribution through Eagle Point to merchants of tributary towns, no less than 17,437,835 pounds of freight. When it is stated that within five years there will be shipped out from Eagle Point annually at least ten times that amount of fruit and other products, the other side of the picture looks equally good.

The stream on which the town is situated deserves more than passing notice. It is the most picturesque stream in this section, affords the opportunity to develop power in almost every mile of its course, and not the least of its attractiveness is owing to the fact that along the stream are found so many fine building sites on the many fruit farms located there. The apple king of the world holds his court now in a beautiful bungalow on the stream and several kings of finance have secured locations close to Eagle Point, and will build beautiful homes when their young orchards come into bearing. As the highways improve hundreds of these fine home locations will be utilized.

For Further Information Regarding Eagle Point Apply to Eagle Point Commercial Club