

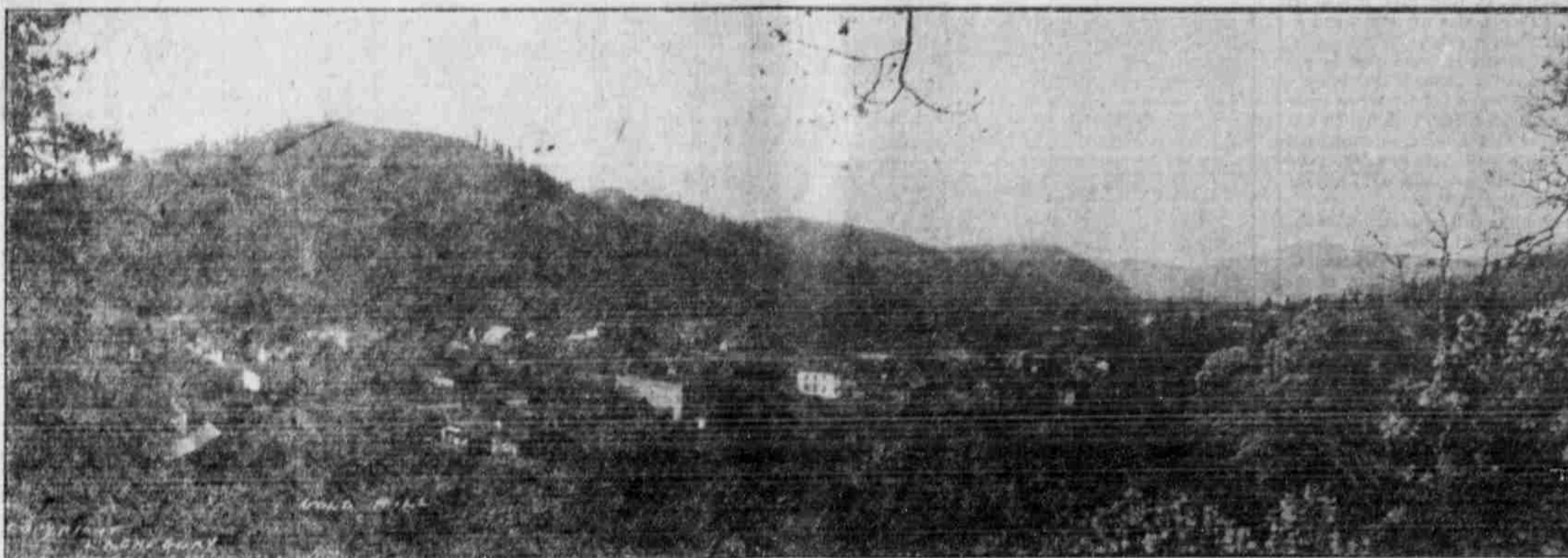
# Gold Hill---Rich Mining and Orchard District

(By D. H. MILLER.)

My eyes first beheld Gold Hill on the present site thereof, September 21st, 1876, and the only thing then that marked its identity was the quartz mill that pounded out the rich gold from the quartz rock that came from the old Gold Hill mountain. This quartz mill stood then where now the famous Goddive orchard is. There was nothing but a forest of timber and brush to be seen. But the hidden treasures of nature were abounding here then undeveloped, except in the case of the gold that came from the old Gold Hill mountain. I was much pleased then as I looked upon Gold Hill in the wilderness, and I have become more and more infatuated with it as the days have gone by.

Nature planted certain facilities and opportunities within a radius of fifteen miles surrounding Gold Hill possessed by no other section of southern Oregon. Within this fifteen mile circuit there is one of the greatest mineral belts west of the Missouri river. This mineral belt consists of deposits of gold, silver and other metals, with iron, lime, cement stone and granite for building purposes and artistic work, and clay for brick and sewer and terra cotta pipe that cannot be excelled.

Very promising prospects for coal have been discovered north of Gold



Panorama of Gold Hill.

Hill and within the fifteen mile circuit. There is no doubt that a great body of coal will be developed. As a matter of fact, in digging a well on the Shipley farm, some five or six miles north of Gold Hill, this summer, a vein of coal eighteen inches

thick was struck at a depth of twenty-five feet, which on analysis proved a very good grade of coal. Within the fifteen mile circuit are thousands of acres of sugar pine, yellow pine and fir timber awaiting the saw and factory. To set the wheels and

belts in motion here is one of the most beautiful, picturesque and powerful streams, the great and magnificent Rogue river, running right through the center of Gold Hill and the fifteen mile circuit. There is scarcely a limit to the power already developed and that can be developed from this great river.

And this great stream is part of the southern Oregon sportsman's paradise. It is the greatest rod stream known today. It has within its waters the gamest fish that the man with rod and reel ever hooked—such species as the cut-throat and rainbow trout, the steelhead and Chinook salmon. These are the fish that give the sportsman the worth of his money and time. Coming back to the city of Gold Hill: The soil that lies on the sloping foothills surrounding Gold Hill is deep and very rich and productive. It is now mostly covered with a heavy growth of timber and brush, but there can be hundreds of excellent homes made here at reasonable prices. North and northeast of Gold Hill and within the fifteen mile circuit lies the famous Sams valley, which is known for its rich productiveness in the lines of fruit and grain, alfalfa and truck gardening. By cutting up the large farms in this famous valley into tracts of from five to forty

acres, and with the unoccupied and unimproved properties surrounding the city of Gold Hill, we can take care of 10,000 homeless homeseekers.

Gold Hill was not thought of as a townsite until 1883 or 1884. The Southern Pacific chose it for a depot site in 1884. It was then in the wilderness, nothing to speak of for it had only what nature had placed here, and that never has been developed and brought out as the location and resources deserve.

The business and professional interests are represented by one bank, two general stores, one drug store, one agricultural implement house, one jewelry store, one hardware store, one furniture store, one second hand store, one hotel, one restaurant, one lunch counter, several boarding houses, one bakery, two saloons, two barber shops, two confectionery stores, one shoe repair shop, two blacksmith shops, one livery barn, one planing and finishing mill with saw mill six miles from town, one weekly paper, the Gold Hill News, two doctors, one civil engineer, one undertaker.

Gold Hill has a local telephone exchange, with rural lines radiating from the town, and connection with two long distance systems. Since Gold Hill was established in

1884 it has grown to a population of six or seven hundred. A handsome brick and cement high school building, of which a picture appears elsewhere in the New Year's number of The Mail Tribune, was recently completed at a cost of \$20,000. The school itself, which included complete high school and business course, is in a flourishing condition. Gold Hill has cement sidewalks, electric lights, sewers and city water. The sewer and water systems, however, are not exactly to our liking and desire, as they are both more or less imperfect. We have now under headway the eradication of both systems and the putting in of two new and up to date systems, which will be up to the standard with any of the water and sewer systems along the line from Portland to Sacramento. The city has voted bonds to the extent of \$25,000 for the water system.

Nineteen hundred and twelve is going to see Gold Hill get a move on that will take the rust and dust off of everything rusty and dusty, every place and everything within the city, and make it a bright and shining light to all who may come in sight of the beautiful city which is to be the result of the present campaign for improvement. Remember that Gold Hill is the natural place

for factories, for Rogue river has the power that can turn every belt and wheel within the state, and remember that this beautiful river runs right through the center of Gold Hill. Watch Gold Hill grow!

## POULTRY RAISING IN ROGUE RIVER VALLEY.

The opportunities for poultry raising in Jackson county are so broad in their nature that the Commercial club has issued a special bulletin covering the subject. Climatic and soil conditions here are thoroughly adapted to the successful raising of the hen, and particularly the production of the egg. The early spring and long periods of sunshine justify this. The growing season ranges between 150 and 200 days, with the average about 170 to 180. A specialty of high grade stock is being made by the poultry growers in the Rogue River valley, and great strides in the advancement of the industry have been made during the past few months. Market conditions through the entire Pacific coast have attracted many people to this section in the sole interest of poultry raising, and Jackson county at the present rate bids fair to become one of the egg producing factors on the Pacific coast during the next few years. Eggs brought in the local markets in Jackson county during the past year on an average of 30 cents per dozen, and many growers made net profits of \$2 per fowl during that period.



Gold Hill's New High School.



Mouth of Tunnel, Lime Kiln.

# G O L D H I L L

## MINING METROPOLIS OF SOUTHERN OREGON

### SEWERS, CEMENT WALKS, FILTERED WATER, ELECTRIC LIGHTS

**G**OLD HILL has a natural site for a city, built as it is on the banks of Rogue river, at the gateway to the wonderful valley of the same name. The setting for a city is here—picturesque and inspiring—and if the law of natural development works as it should, the setting will some day, and that not far distant, be filled by a city such as southern Oregon may not boast at present. The town takes its name from Gold Hill mountain, so called because nearly half a million dollars was taken from a ledge at a point near its summit in the early fifties. No town in southern Oregon has a greater list of actual, get-at-able natural resources awaiting development immediately contiguous to its corporate limits.

The rushing current of Rogue river—teeming with gamy salmon, trout and steelhead—offers at a comparatively slight cost per developed horsepower an abundance of power for any and all industrial development. And speaking of hunting—the neighboring hills are the happy hunting grounds of southern Oregon. No hunter returns without plenty of venison, and generally he brings in the legal limit. Cougar, bear, panther and coyotes may be had by those who care to hunt them, and several trappers in the vicinity make good money each winter on the finer furs.

The choicest fruit land in southern Oregon surrounds Gold Hill, the numerous creek valleys, with their deep, fertile, mineral-mixed soil and absolute immunity from frost providing almost ideal conditions for the horticulturalist.

Several extensive timber belts can be most easily put into the market with mills located at Gold Hill.

**T**HE following is a list of mining properties in the region contiguous to Gold Hill, classified as to their respective districts:

**Kanes Creek:** Revenue, Alice, Mendenhall, Roaring Glimet, Braden, Millionaire, Centennial placer, and many others; also the Hughes and Householder lime quarries.

**Galls Creek:** Bill Nye, recently purchased by a powerful French syndicate, operating mines in all parts of the world; five stamps will soon be in operation. Gold Standard, Red Oak, Rattlesnake, Kubli, Tin Pan, Burns & Duffield, H. D. Jones, Last Chance, and Big Foot.

**Foots Creek:** Champlin Dredging Co., Black Channel placer, Lance Bros. placer, Dixie Queen, Bertha, Horseshoe, Swaker, Hummingbird, and many others.

**Sardine Creek:** Little Giant, Black Hawk, Grey Eagle, Lucky Bart group, Corporal G, Garrison, Haff group, Hinkle, Smith placer, Dunsbury placer, and many others; this creek places its entire length.

**Rogue River Hills:** Fairview, Blizzard, White Horse, Sylvanite, Trustbuster, Pactolian, Garfield (iron), Fleming-Ward (iron). **Gold Hill Mountain:** Gold Hill ledge, Copper Queen, Whitney, Fisher, Dikeman and many others.

**Backwell Hills:** Maybelle, Nellie Wright, Bowden, Yellow Jacket, Lone Pine, Frank Shaffer and many others.

**Willow Springs:** Murray, Nick Jerry, Herschberger, Houston and many others.

For further information address  
**REX H. LAMPMAN**  
Secretary Business Men's Assn.  
Gold Hill, Oregon

**G**OLD HILL is the center of a rich mineral district. Gold, copper, iron, cement rock, brick and potter's clay, shale, lime—the purest on the continent, according to government geological reports—all are here, and all undeveloped. The rich surface gold deposits, both placer and quartz, have been worked for fifty years, and have paid and are still paying handsomely. There is no deep mining. This will come later, and when it does it is freely predicted that Gold Hill will become one of the greatest camps the west has ever seen.

A mountain of high-grade cement rock lies just south of the town, and a mountain of high-grade hematite iron just north—both undeveloped. A bituminous coal belt many square miles in extent lies seven miles north of the town—undeveloped. This is in the Sams Valley and Meadows districts, comprising some of the finest land for fruit and general farming in southern Oregon. An eleven-foot vein of black lignite has been uncovered in the Meadows, and samples of coal taken from wells in Sams Valley have been proven by analysis and forge tests to be of high quality.

Capital is invited to investigate the Gold Hill district, either before or after investigating other districts, whether the object of the investigation is mines, timber, cement, lime, brick and tile clay, timber, coal, power, or a location for a sanitarium or tourists' hotel—Gold Hill has them all.

Add to all its other advantages as to location and resources an all-the-year climate that can't be beaten on the Pacific coast, and an idea is gained of the justice of the claim that Gold Hill has the best prospects for future development of any town in the world-famous Rogue River valley of southern Oregon.