

# "CROWN OF GOLD" SERMON'S TEXT

Dr. Ray Palmer Delivers Another Telling Address to Congregation at the First Baptist Church Revival.

Sunday was a great day at the Baptist revival. At 10 a. m. Dr. Ray Palmer gave an address to the Sunday school on "The Golden Morning of Life." Many young people were converted, ranging in age from 10 years to 17.

At 11 a. m. Dr. Palmer preached what was regarded as his greatest sermon up to that time on the "Deliverance of Christ." Many men were present in the splendid congregation.

When the preacher reached the close of this telling sermon many were in tears. A number of persons united with the church.

At 7:30 p. m. the church was packed to the doors when Dr. Palmer delivered his masterpiece on "The Immortality of the Soul."

Many came forward when the call was given.

The evangelist will preach tonight on "The McNamaras and Their Crime."

The church will doubtless be crowded. Come early and secure a seat.

Rev. Ray Palmer, D. D., preached Friday night at the Baptist revival to a splendid congregation. Theme of the sermon, "The Crown of Gold"; text, Rev. 3:11: "Hold fast to that which thou hast, that no man take thy crown. The speaker said in part: "God created man to be king of the world. Man took the crown from his brow and hurled it into the dust. Jesus Christ came to restore man to his rightful throne, and in our text He called on man to accept and hold on to his immortal crown. The preacher showed that the text had primary reference to the Philadelphia church in Asia. They were called on to hold fast to the little strength they had. It was said of them that they had 'kept God's word'; they had not denied the name of Christ, and had 'kept the word of his patience.' The speaker then addressed young men and said: "Let no man take the crown of manhood from your brow. When I refer to manhood I think not of physical power. A man may be a Sandow or a Sampson in physical strength, and yet Sampson, like me, may be short of his moral strength by some tempting Delilah. When I speak of manhood I think of young Hobson, who dared to sink the Merrimac in the mouth of Santiago bay, in the interest of human liberty. I think of Captain Phillips, commanding in the Spanish-American war, of the battleship Texas. When the last gun had been silenced on Spanish ships, he said: 'Men, take off your hats and bow your heads in gratitude to Almighty God for the victory He has given us this day.'

"When I refer to manhood I think of Governor Joseph W. Folk, whose pastor I had the honor of being for several years while pastor in Jefferson City, Mo. Young Folk came from Brownsville, Tenn., to St. Louis, Mo., a few years ago. Very soon the politicians saw in him good timber for office: they elected him; he had not been in office many days until he began to land criminals high and low behind the bars. His fame spread far and wide. At last, when the hour struck for the election of a governor of that state, the people rose up en masse and made Joseph Wingate Folk governor of Missouri I believe, in many ways, Folk was the greatest governor Missouri ever had. He is a grand Christian gentleman, and good and great enough to be president of our country.

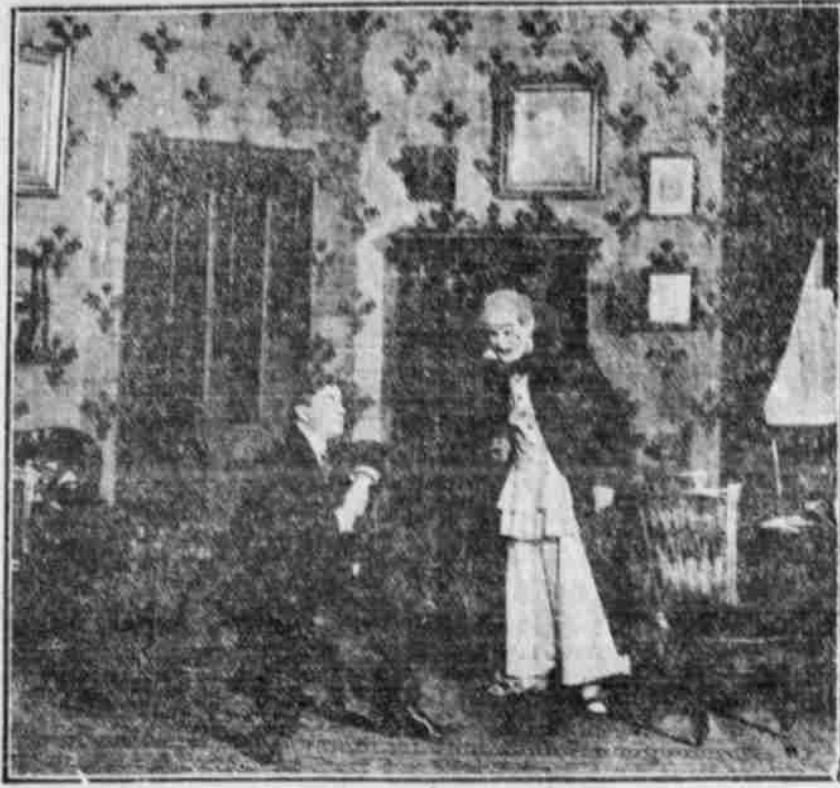
"When I talk of manhood I think of William J. Bryan, who not only preaches, but tries to practice. While he will, perhaps, never be president, he is one of the best Christian statesmen of our country and is recognized as one of the greatest orators in the world.

"When at that great convention in Chicago, he closed his eloquent speech with the words, 'You shall not press down upon the brow of labor the crown of thorns; you shall not crucify mankind upon a cross of gold.' Bryan uttered burning words that are being fulfilled in our day, as our government has set itself to the Herculean task of breaking up the law-defying trusts and in compelling them to recognize the heavenly rights of others.

"When I tell you of manhood, I must refer to Roosevelt, whom I regard one of the greatest Christian statesmen of the world. God gave him the honor of taking the hand of Russia and the hand of Japan and placing one inside the other and causing them to clasp as brethren.

"Young man," exclaimed the preacher, "the time may have been when the political trickster stood a better show of election than the pa-

## Attractions at the Medford Theatre



In the company appearing in Frederic Thompson's "Polly of the Circus," with Miss Ida St. Leon in the leading part, which appears at the Medford theatre Wednesday, December 6, are, in addition to a score or more of well-known actors, a number of circus people and circus acts which contribute not a little to the success of the play. The big third act sawdust scene represents a three-ring circus in actual operation—one of the most realistic stage pictures ever shown on the stage. One of the many features of "Polly of the Circus" is a trained horse, one of a carload carried by this attraction. The animal is called Bingo and is a thoroughbred. He was brought to this country by Barnum & Bailey's circus and afterward sold to the New York Hippodrome when Frederic Thompson was the managing director. During the summer time Bingo is one of the features of that great amusement place, Luna Park, Coney Island, New York city. Miss St. Leon and Bingo are great friends. The little actress says that her horse can do almost anything but talk.

DAVE BRAHAM IN HIS ORIGINAL ROLE OF "PUSH" MILLER AND CARRIE LAMONT AS CYNTHIA IN A SCENE FROM "CHECKERS" AT THE OPERA HOUSE THURSDAY EVENING.



## FAMILIES TO GET MAKE VITRIFIED DEFENSE FUND BRICK IN VALLEY

Washington Labor Union Suggests Disposal of Huge Fund Collected to Defend McNamaras—Will Be Acted Upon Shortly.

WASHINGTON, D. C., Dec. 4.—"Turn the enormous McNamara defense fund over to the families of the twenty-one victims of the Times disaster."

This suggestion by the Washington labor union will be acted upon by the labor union within a short time.

Triot, but, thank God, that day has forever passed. Today our nation is calling for pure, strong, Christian men to lead our hosts to sublime heights.

"Young man, enter politics. Take your God and your Christ with you, and go forth to save and perpetuate our nation. Make it the lighthouse of all nations, that the millions of earth, seeing our golden light from afar, may be guided through all darkness, up to God and immortal life."

Rogue River Pottery Company Opens Plant at Gold Hill Tuesday With a Crew of Thirty Men—Look for Success.

The Rogue River Pottery company has completed arrangements for operating the Ray Buck plant at Tolo, recently leased for a term of twenty years, and with a force of thirty men will begin work Tuesday morning. It will first manufacture vitrified brick, which has never before been manufactured in the valley, and tile.

J. H. McNichols, manager of the company, states that all matters have been satisfactorily adjusted and that he contemplates success in the venture.

The classified ads would be the duldest possible "reading matter" for a person who might have no aim or purpose in mind. But to folks with purposes, aims, desires, questions—they are the most interesting "reading" in town!

## MEDFORD CLUB COLVIG TAKES JUNIORS MEET HIS NEW JOB

Pledged Membership of 52—Miss Catherine Mears is Elected President—Committees Named to Take Up Work.

The junior association of the Greater Medford club recently organized with a pledged membership of fifty-two.

Officers were elected and committees appointed, the election resulting as follows: Miss Catherine Mears, president; Miss Kentner, vice president; Miss Reilly, secretary; Miss Arra Harmon, treasurer.

The committees appointed were: Constitution—Miss Cox, chairman; Miss Devore, Miss Carpenter.

Rooms—Miss Clark, chairman; Miss Conger, Miss Broadley.

Decorations—Miss Reilly, chairman; Miss Fielder, Miss Coffin, Miss English.

Program—Miss Santee, chairman; Miss Mears, Miss De Vore, Mrs. Philbrook.

Investigation (for Cafeteria)—Miss McKay, chairman; Miss Pierce, Miss Butler, Miss Round.

This club has been organized for the purpose of establishing a social and educational center for the young women of Medford, all of whom are invited to membership, and give the assurance of a cordial welcome.

The location of the club rooms will be decided upon within a few days, and the furnishing of the living room, library and tea room must follow as soon as possible.

Those who can contribute toward making these rooms attractive and homelike are requested to communicate with Miss Reilly, 1123 West Main street; Bell phone 6572.

Many Hear Lectures.

The local Southern Pacific office has been advised by John M. Scott, general passenger agent, that up to November 30th, 99,451 people attended lectures in the lecture rooms of the Harriman lines. Hundreds of people had to be turned away, and it is the growing opinion that it is not only the most attractive but best business feature of the show.

If you want to find the best possible place to live—after your contemplated removal—study the "to let" ads as though they were your creed and Koran.

Waskins for Health.

## Sacramento Valley Lands

The Sacramento Valley is the valley of opportunity for the homeseeker and investor. The climate is mild and equable. The entire valley has rail and water transportation, bringing it in close touch with all the coast markets, and with the opening of the Panama Canal freight rates to eastern points will be cut in half. Millions of people will pour in from the old countries, and with the vast increase in population, land will advance in value many times over. The time to buy is NOW, while lands are within reach, and reap your profit when the big advance comes. Here are some good ones: 160 acres of rich, level alfalfa land, 2 1/2 miles from Dixon, in Solano county, California. Dixon is on the main line of the Southern Pacific railroad from Sacramento to San Francisco, 22 miles from Sacramento and 65 miles from San Francisco. This is the only large body of good alfalfa land within 75 miles radius of San Francisco. It is destined to become the leading source of supply for milk and dairy products for San Francisco and the bay cities, where a million people are now living, and where, with the opening of the Panama Canal, millions more will be there. Dixon ships a carload of certified milk to San Francisco every day. Market milk is 14 cents a gallon and means that the ordinary dairy cow that gives 25 gallons a day will pay 45 and 50 cents a day income. You can figure your income by the number of cows you own. Two acres of alfalfa will support three cows. The soil is the richest in the state. The winters are mild and the summers cool. Irrigation can be had by pumping; over 100 pumping plants in successful operation demonstrate that irrigation is more feasible and more economical than gravity irrigation. Every acre of this 160 acres will produce alfalfa in abundance, from 3 to 11 tons per acre each season. Fourteen acres now in alfalfa, one of the best stands in the district. "The proof of the pudding is in the eating," and when you see the alfalfa you will not hesitate a minute. The price for the whole 160 acres is only \$17,000, a little over \$100 per acre, and reasonable terms can be made. If you want a BARGAIN, where you can make a handsome income on cattle, hogs and alfalfa, this is your opportunity.

40 acres, 3 miles from Dixon, all plowed and sown to barley this fall. All rich, level land, every acre perfect for alfalfa, with alfalfa growing on three sides and a county road on the fourth side. Adjoins a certified dairy. The price is only \$200 per acre, and the lucky man gets the crop. Reasonable terms can be made. 160 acres of rich, level, loam land near Chico, in Butte county, where the U. S. government located its Plant Introduction Garden, and where the soil experts of the Agricultural Experiment Station stated that the soil and climate were the best combination ever known in the civilized world for successful plant growth. This land faces the main county road leading into town. It is a deep, rich soil, free from heavy alkali and gravel, and dotted with handsome, large oak trees. Alfalfa is grown without irrigation just across the road. There is an eight-room modern house in fair repair, good barns, outbuildings, and the price is only \$22,000, on reasonable terms, just figures \$137.50 per acre.

250 acres near Chico, adjoining the famous U. S. Plant Garden. All rich, sandy loam, sediment soil, with the exception of 15 acres of high land for building purposes, about 60 acres in orchards. It is the FINEST in the land for vegetables, alfalfa, fruits or grain. Handsome oak trees scattered over the tract. Has a 500-foot water right from an adjoining creek, assuring an abundance of water for irrigation. It is now ditched over a large portion of the land. It will produce any variety of deciduous or citrus fruits, such as oranges, lemons, olives, peaches, prunes, almonds, apricots, pears or cherries. All kinds of vegetable grow to perfection. Alfalfa will make 10 tons per acre, barley 25 and 40 bags per acre. The price is only \$100 per acre, and reasonable terms can be made.

400 acres in Tehama county, 1/2 mile from a main line station on the Southern Pacific railroad; 200 acres in alfalfa that produced 1500 tons of hay for the season of 1910 and the same for the season of 1911, or 7 1/2 tons per acre, all WITHOUT IRRIGATION. The 200 acres of alfalfa land is the best land in the Sacramento Valley, bar none. It is pure river bottom sediment, 20 feet in depth, without a trace of alkali, hardpan or adobe. It is all fenced and cross fenced into five fields with hog-tight wires. You can keep 300 dairy cows on it the year around. If you want to sell your hay, there is an alfalfa meal mill one mile distant, which will take all your hay at \$7 per ton, delivered loose at the mill; you can cut, haul it and deliver it for \$2 per acre, leaving you a net price of \$5 per acre or \$7500 cash for the season on this part of the ranch alone. The remainder of the land is fine grain or fruit land. It is the finest wheat, apricot or cherry land in the state. It will produce from 10 to 12 bags of wheat per acre in summer fallow, or 12 to 20 bags of barley in summer fallow. This is all fenced and cross fenced into five fields, making 10 fields. The whole acre is very large new wire barn, a large new hay barn, all kinds of corrals for handling stock, electric motor and pump for supplying water for domestic purposes and stock purposes, a fair residence, telephone and electric chis, with power on the ranch for pumping. If you want to irrigate. An abundance of water can be had at a depth of 100 feet that will rise to within 12 or 15 feet of the surface. It is equipped and ready to handle rice, citrus, cattle, hogs or sheep. It is an income-paying property, producing an income of 16 per cent net on only one-half of the ranch. The property is only \$45,000, on terms of \$11,000 cash and the balance in three, four or five equal annual payments, to suit your convenience. It is the BEST BUY in the Sacramento Valley or California. There are no other equal number of acres at the same price that will begin to compare with it.

When you buy land in the Sacramento Valley you are making an investment that is absolutely safe, and where you are going to reap an enormous profit. We handle Sacramento Valley lands, nothing else. We can fit you in anything from a five-acre farm to a 500-acre farm. If none of the properties here appeal to you or what you have in mind, kindly give us your ideas. We can FIT you. Make up your mind to look over this country—it is worth your while. Any information will be gladly supplied free of charge.

GEORGE X. FLEMING

The Best-Posted Man in California on Sacramento Valley Lands. 1026 Eighth Street, SACRAMENTO, CAL.

# TOYS

By Wednesday we will have finished unpacking and will have on display the largest stock of Toys ever shown in Medford

# TOYS

## HUSSEY'S

## Now Then

It's time to start thinking about Christmas. We want to say to you SHOP EARLY

## Van De Car's

There are only 18 days left for your selection of Xmas gifts. An inspection of our complete stock of Jewelry, Cut Glass, Silverware and Novelties will make your gift-giving easy.

## Van De Car's Jewelry Store

229 EAST MAIN STREET

Watch Our Windows

## NOW IS THE TIME TO HAVE PICTURES FRAMED We Handle Colonial and Oval Frames

## The ART STORE

Pacific Phone 1094 Home Phone 95

27 NORTH GRAPE STREET

## RUSS MILL

WHOLESALE and RETAIL

L. B. BROWN, Prop

