

**SUBSCRIBERS**  
Failing to get paper will have one delivered by phoning office by 6 p. m.

# MEDFORD MAIL TRIBUNE

**WEATHER**  
Clear, cold, Max., 40; min., 37; rel. hum., 81; prec., .02

Daily—Sixth Year.  
Forty-First Year.

MEDFORD, OREGON, WEDNESDAY, NOVEMBER 22, 1911.

No. 210.

## CHIC BOWLIN UNDER ARREST FOR ASSAULT

**Negro Pugilist Charged With Assaulting Young Attorney When He Demanded Explanation of Insult Offered Young Woman.**

### ASSAILANT SEEN TO UNLOCK AND ENTER SHOP

**Only Bowlin Had Key to Establishment and Police Claim They Have a Clear Case.**

Chic Bowlin, a colored porter in a West Side barber shop, who has figured more or less in the local boxing game during the past few months, was arrested by Chief of Police Hiltson this morning charged with assault and battery on Charles Tschirgi, a young attorney of this city. The assault occurred Monday night, about 11:30 o'clock, on West Main, and followed a demand for an explanation on the part of Mr. Tschirgi after an insulting remark had been addressed to the young woman Tschirgi was escorting home. Tschirgi was badly injured, having his cheek laid open.

For some time the identity of the colored bruiser was unknown, but the young woman and Tschirgi are each expected to identify Bowlin. It is known that Bowlin was more or less intoxicated on Monday evening, and after assaulting Tschirgi he was seen to enter the barber shop where he is employed. Bowlin claims he retired at 9:30 o'clock and was on the street no later. This is disputed by several witnesses who state they saw him out as late as 11 o'clock and that he was intoxicated. Bowlin will be given a hearing this afternoon in the justice's court.

Bowlin is known to have had a colored friend with him during the evening but how he could have unlocked the barber shop and entered, as Tschirgi is prepared to swear his assailant did, when Bowlin admits he alone had a key to the place, is not known. Bowlin sleeps in the shop. According to Tschirgi, he, with the young woman he was escorting was near the entrance to the Palace, a rooming house on West Main, when a colored man, answering to Bowlin's description, approached and addressed an insulting remark to the young woman. Tschirgi demanded an explanation when suddenly the negro struck him, laying his cheek open. The negro then turned and unlocked the barber shop entered. The police claim that they have a clear case against Bowlin and can convict him. The penalty is not less than three months nor more than one year in the county jail.

Bowlin formerly showed some ability in the boxing game, and was more or less prominent in sporting circles, until recently he was defeated. Lately he is said to have been quarrelsome, owing to his intemperance more or less in liquor.

## JOHN D. MUST GIVE PAPERS

WASHINGTON, D. C., Nov. 22.—How John D. Rockefeller, after giving him a "brotherly feeling," plundered him of millions of dollars worth of the richest mines of the Mesaba range, using the Rev. F. T. Gates, his chief philanthropic agent, to put through the deal, was detailed at length to the Stanley congressional committee, which is investigating the steel trust here today, by John Merritt, a grizzled backwoodsman, who uncovered to the world those vast fields of iron which today form a great part of the wealth of the oil king.

WASHINGTON, D. C., Nov. 22.—Chairman Stanley of the congressional committee investigating the steel trust today announced that a subpoena duces tecum would be issued ordering John D. Rockefeller to submit to the committee certain documents bearing on his deals in Minnesota ore lands.

## MASSACRE OF FOREIGNERS IS IMMINENT

**Rebels and Manchus Each Blame Aliens for Favoring Cause of the Other, and Chances for Foreigners' Lives Now Slight.**

### ANTI-FOREIGN FEELING SHOWS UP DANGEROUSLY

**Outlaws Swarm Through the Provinces and Slaughter Is Expected.**

PEKIN, Nov. 22.—Dispatches from a score of points today declare that the Manchus are fostering a violent anti-foreign propaganda, and that outbreaks against alien residents of China are imminent. Messages from Nanking say that conditions there are desperate. The imperialist garrison is surrounded by forces which are numerically vastly superior, and their supply of food is nearly exhausted.

It is believed here that when the revolutionist attack against Nanking is delivered, the rebels, if they are victorious, will massacre the Manchu garrison to the last man.

### Foreigners Flee.

SHANGHAI, Nov. 22.—With massacres at the hands of both the Chinese rebels and the Manchus, each of whom blame aliens for favoring the cause of the other, foreigners from all the interior of China today are fleeing for the coast, and many of them, it is feared, will meet death on the way.

The anti-foreign feeling, so far repressed, is beginning to show itself dangerously, especially in the province of Honan, from whence a wholesale exodus of Europeans is in progress. Throughout all the provinces outlaws are swarming. They openly threaten the fleeing foreigners, and news of the slaughter of small parties is hourly expected from the interior.

### Massacres Reported.

SHANGHAI, Nov. 22.—Dispatches from Peking today say that indefinite reports of massacres of foreigners in various cities of the interior have reached the capital through native sources. These rumors are in part given color of truth by reports from Hankow that anti-foreign feeling is increasing among the revolutionists who believe that only the moral support of the European powers and of the United States has so far delayed the complete collapse of the Manchu throne.

All foreigners have been warned to leave Nanking immediately as desperate fighting is expected there between the columns of revolutionists which are converging on the city and the Manchu force defending it. At latest accounts the Manchus are still strongly entrenched on Purple Hill and in the city itself, and are prepared to make a last stand to cripple the revolt.

### Brigands Enlisted.

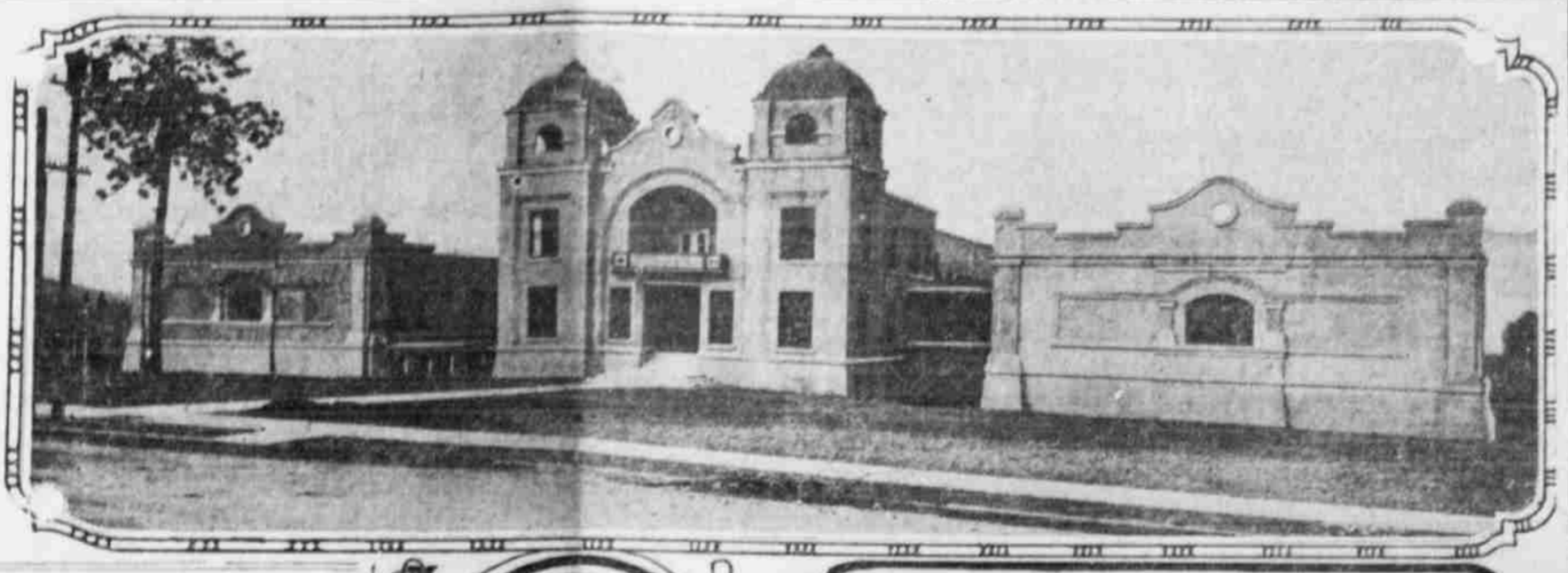
HONG KONG, Nov. 22.—Brigands are being enlisted as soldiers and police here today by the new government in their desperate attempt to preserve order and peace. The tense state of excitement under which all are laboring was shown when a bomb was exploded in the Canton provincial assembly building, setting it on fire and creating a general panic. Minor outbreaks and conflicts are frequent.

### Fleet Not to Go.

HONOLULU, Nov. 22.—Rear Admiral Cowles, commandant of the naval station here, declared today that he did not believe the Pacific fleet will steam to the orient. He expected the fleet to leave San Francisco for Hawaii any day. The first thing to be done when the fleet arrives here is to take on coal, which is piled on the wharves in readiness for the warships. Maneuvers will immediately follow the coaling and if there is any time left for play the officers and men will take it then.

Look at the ads that offer employment, and you'll find the right one.

## Ashland's Splendid New High School Building Erected at a Cost of \$75,000



## ASHLAND'S NEW HIGH SCHOOL IS NOW OCCUPIED

**Splendid Building, Erected at Cost of \$75,000, Is Dedicated and in Use—Building Is Built on the Mission Style.**

Ashland's new high school, erected at a cost of \$75,000, has been formally opened and is now in use. A half holiday was declared Monday, and all the business places closed while the entire population of the city flocked to the new building, which was thrown open for inspection. In the evening the formal dedicatory exercises were held, and among those present were L. H. Alderman, state superintendent of schools, and President P. L. Campbell of the University of Oregon.

The building is on the mission style and is built in three units, connected by arcades in order to reduce the danger from fire. A large gymnasium is a feature, and there are quarters for both boys and girls, including baths. The gymnasium is equipped with a stage, and when used as an auditorium will seat 900 persons.

### Domestic Science Taught.

The domestic science department consists of a cooking, housekeeping and sewing rooms. The stoves are electrical, and the sewing machines can be driven by power. The manual training department has a blacksmith shop, metal-working room, woodworking and draughting room. The forge room is fireproofed.

The exterior of the building is roughcast, with smooth cement trimmings. All the windows in the front are of plate glass, and the front doors are sheathed in glass. Heat is furnished from an oil-burning plant. The walls of the building are of brick. There are four porcelain drinking fountains with bubbling cups.

### There is a master clock, and secondary clocks in all the principal rooms, thus insuring absolute synchronization of study and recitation periods. The grounds comprise eight acres, which give ample room for athletic fields and for agricultural study and experiment.

## SEATTLE IS STILL WITHOUT WATER

**Schools Remain Closed and Water Wagons Are Running Day and Night to Supply City With Water for Domestic Purposes.**

SEATTLE, Wash., Nov. 22.—Half of Seattle continues to be without water, schools remain closed and water wagons are running night and day to supply apartment houses, hotels and hospitals with enough water for domestic purposes.

Temporary relief is promised by tomorrow through an auxiliary plant being installed in Lake Washington. The main water system on Cedar river will not be working until the first of next week.

Many residents in the affected district have left the city temporarily and hotels and apartment houses on



## TWO ELECTRIC MOTOR CARS FOR LOCAL TRAFFIC

**Colonel Ray Offers to Supply Them With Power First Six Months Free of Charge—President Sproule Has Matter Under Advisement.**

The Southern Pacific will place two electric motor cars on the Grants Pass-Ashland suburban service, in place of the present gasoline motor, if President Sproule accepts the proposition made him during his stop in Medford by Col. Frank H. Ray, who has for a year been trying to induce the railroad to use the electric motors. Said Colonel Ray:

"These motors are operated by the latest Edison storage battery and run many hours without recharging. They carry from sixty to 120 people, according to size. They are in successful operation on the Pennsylvania and other eastern railroads, and have proven more reliable, cheaper to operate and more satisfactory than any other motor."

"The Rogue River Electric company offers to furnish free power for a six months' test, and the car makers to furnish the cars on a trial basis if not satisfactory not to be kept. If the offer is accepted it will enable the railroad to operate a motor hourly at slight expense, thus greatly conveniencing the public."

## WOMEN RIOTERS LODGE IN JAIL

**Disheveled, But Bright and Undaunted, Suffragettes Appear in Row Street Court to Answer to Charge of Rioting.**

LONDON, Nov. 22.—Disheveled after their night in jail, but bright and undaunted, 229 suffragettes appeared today in Row street court to answer to the charges of participating in last night's rioting, when the frenzied mob of women smashed windows, defaced government buildings, fought policemen and created a general uproar in their endeavor to get into the house of commons and force Premier Asquith to change his



## FISHER CARRIES OUT PROMISE TO WILL STEEL

**Recommends Appropriation for Crater Lake Park Roads, But Leaves Matter Open So Mr. Steel Can Appear Before the Committee.**

Carrying out his promise made a few weeks ago to Will G. Steel, Secretary Fisher of the department of the interior has placed in his annual report a recommendation for an expenditure of \$153,000 for roads in the park. However, Mr. Fisher added to this recommendation the statement that "the department reserves the right to submit the original estimate, or an amended one, at the hearing before the committee."

This insertion gives Mr. Steel an excellent opportunity to present any considerations which he may think important before the appropriations committee when they take up the matter.

Mr. Steel left Tuesday evening for Washington to begin his work of securing an appropriation of \$500,000 for the Crater National park. He has several large interests behind him and has many friends among the officials, so that his success seems certain.

## DARROW ATTACKS JUDGE BORDWELL

**Directly Charges That Court Is Discriminating Against the Defense—Rebuked by Court, Attorney Insists and Perfects the Record.**

HALL OF RECORDS, Los Angeles, Cal., Nov. 22.—The direct charge that Judge Bordwell was discriminating against the defense, and in favor of the state was made in open court today by Clarence Darrow, chief counsel for James B. McNamara, on trial for murder in connection with the destruction of the Times. Although rebuked by the court, Darrow insisted on his allegations and perfected the record so that grounds for appeal might be specifically evident. The tension in the case was dis-

## KING OF DENMARK TO MUNCH FRUIT OF ROGUE VALLEY

**Yellow Newtowns to Be Exhibited at Spokane, Purchased for Frederick VIII. of Denmark—Apples to Be Used at Yuletide Festivities.**

SPOKANE, Wash., Nov. 22.—Nice, juicy, Yellow Newtown apples, intended for King Frederick VIII. of Denmark a few weeks hence, will be on exhibition at the Spokane National Apple show.

This information was conveyed to Harry J. Neely of the National Apple show yesterday by John S. Malloy, irrigated fruit land agent of Spokane, who is representing R. K. Neil and P. Welch in the Rogue River valley districts near Medford, Ore., this year.

The Medford committee appointed to select a carload of apples from the Medford district for exhibition at the National Apple show chose the Yellow Newtowns, grown by the Houston brothers, who came west from Jamestown, N. Y., a few years ago.

The carload has been picked and is now being selected for the king of Denmark, the order having been closed a few days ago. The apples come directly from the Buckley orchards, containing 935 pear and apple trees. This orchard is almost in the center of the Rogue River valley.

Just what price the king of Denmark paid for the carload is not known and considerable interest attaches to the order for American apples, as it is understood King Frederick is rather inclined to discriminate against American made goods in favor of some of the other countries.

The apples will be used in the elaborate yuletide festivities of the Danish court. In all probability some of the apples which will be shown in this particular exhibit will find themselves stuffed into the stockings of some of the Danish court children and ladies, as the Danish court is known to be a "stickler" for the old-time Christmas customs.

Mr. Malloy also has notified Mr. Neely that the Houston brothers will be represented in the box displays. "Rogue River valley will be there with bells and prepared to take some of the prizes," is part of the message from Mr. Malloy.

## WAVES MENACE LIFE OF BRYAN; SHIP GROUNDS

**Wireless Reports That Vessel Is in Need of Immediate Help, But Officials of the Line Say Steamer Is Not Badly Injured.**

### PASSENGERS MAY HAVE TO TAKE TO LIFEBOATS

**Bryan on His Way to Kingston, Jamaica, to Visit His Daughter, Mrs. Owens.**

NEW YORK, Nov. 22.—The Hamburg-American liner Prinz Joachim, on board of which are William J. Bryan of Nebraska, his wife and his 6-year-old grandson, went ashore on the rocks at Samana Island, near San Domingo, at 3 o'clock this morning. Wireless reports state that the vessel is sinking and in need of immediate aid. Numerous vessels are rushing to her assistance.

Earlier reports stated that the ship was in no danger, but these were contradicted by late dispatches. The Prinz Joachim is declared to be going down so rapidly that the passengers and crew may have to take to the lifeboats unless relief reaches them soon.

### Passengers Calm.

Wireless messages received at 9:30 o'clock said the passengers were calm. Preparations have been completed to transfer them immediately on the arrival of a rescuing steamer. Bryan is en route to Kingston, Jamaica, to visit his daughter, Mrs. Reginald Owen. He planned to spend the winter in Panama after his visit in Kingston.

Marine men declare the Prinz Joachim must have been 25 miles off her course.

Samana Island is one of the small outlying islands of the Bahama group. It is just north of Southeast Salvador, and is also known as Atwood's Key. It is an uninhabitable rock one mile wide and eight miles long.

### Statement Issued.

Officials of the Hamburg-American Steamship line today issued the following statement:

"Brief wireless information to us is that the liner Prinz Joachim went ashore this morning on a key near Norwood's Isle. But the passengers are in no danger. The vessel is resting easily and aid has already been dispatched from Kingston. We expect another message within a few hours telling us that the steamer is floating. The passengers will not be taken off."

Word was received here that the tug Peoria and the revenue cutter Algonquin, both government vessels, have been sent to the rescue.

## DIAZ NEVER TO RETURN HOME

**Former President of Mexico Declares He Will Give His Last Dollar to Protect Country From Foreign Invasion.**

PARIS, Nov. 22.—Final declaration that he expects never to return to Mexican politics, coupled with the assertion that in the event of any foreign country attacking Mexico he would give his last dollar for the country of which he was president for so many years, was made here today by Porfirio Diaz to the United Press. The aged president of Mexico thus delivered his views of the present situation in the southern republic and spoke of his own feelings.

### By Porfirio Diaz.

"I am willing to express an opinion on Mexican events. Reports reaching me are biased one way or another. The country is split into warring factions, antagonistic, and

(Continued on page 2.)

(Continued on page 5.)

(Continued on page 5.)

(Continued on page 5.)