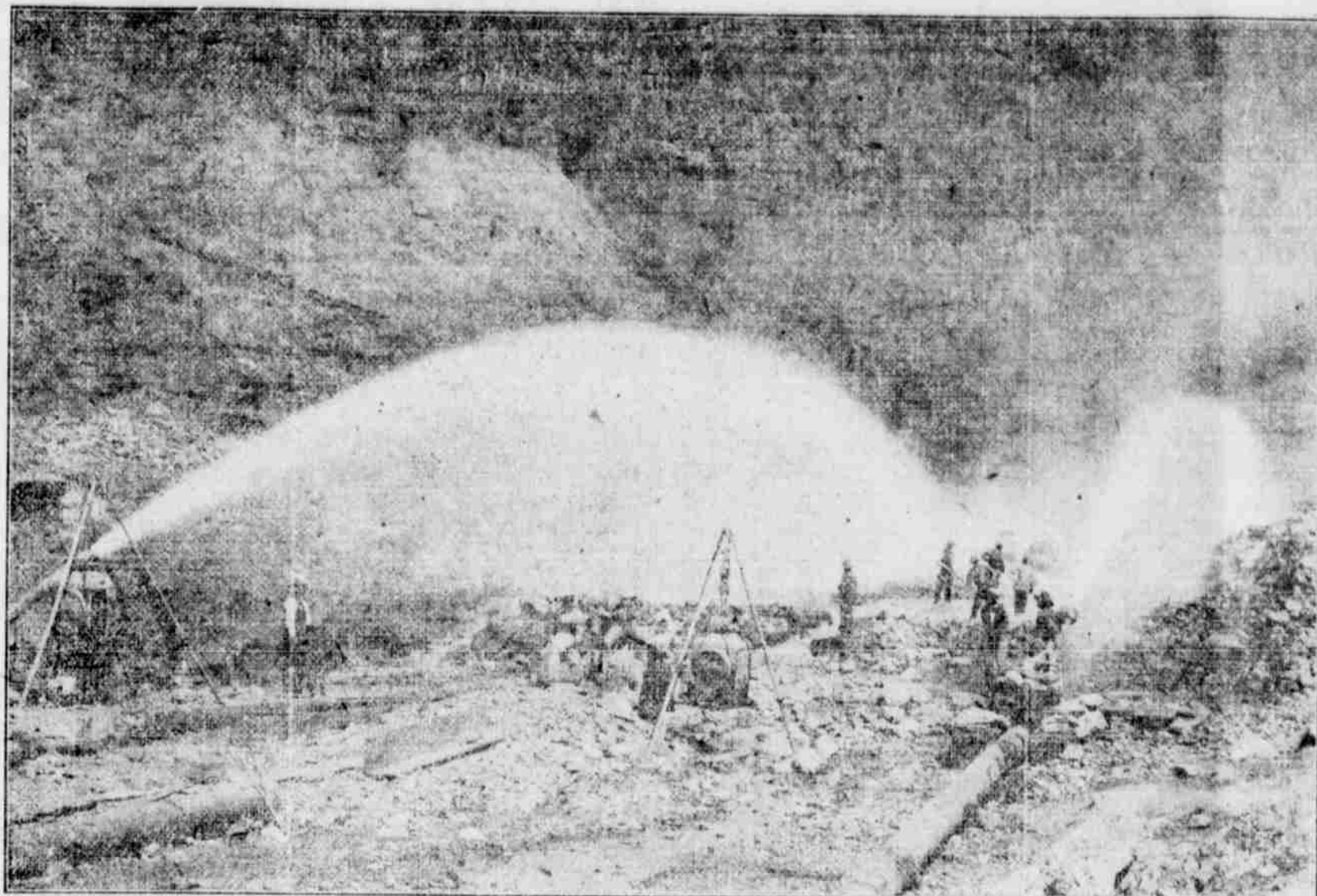


The Mines of Jackson County Have Produced \$35,000,000 in Gold



HYDRAULIC MINING IN THE ROGUE RIVER VALLEY.

This is the pioneer mining district of Oregon. Gold was first discovered on Jackson creek in 1851, bringing thousands of fortune-hunters over the Siskiyou mountains from California. For years Jacksonville, the first Oregon mining camp, located five miles from the present city of Medford, was one of the liveliest gold districts in the west. It still remains a substantial mining district.

The vast average of old channels gravel bars and auriferous placer deposits, together with the abundant water power and numerous streams, combine to make this section one of the leading hydraulic placer districts in America. Placer mining has always been largely followed here. Fully \$25,000,000 in virgin gold has been secured from the several diggings since the original discovery. Jackson creek diggings alone have produced nearly \$6,000,000. The hydraulic mines, a half hundred in number, are among the best equipped in America, with their miles of ditches and flumes thousands of feet of iron and steel pipe, their batteries of giants and all necessary machinery for hydraulic mining. The season of mining being long, the water supply and diggings abundant, the output from Jackson county's surface mines total a half million each year.

No Restriction on Dumps.

The rivers and streams of the district are unobstructed, and there are no restrictions in the matter of dumping tailings into them. This gives the placer miner every possible opportunity for unobstructed operation.

There yet remains considerable unclaimed placer ground here, but the greatest opportunity along this line is in the investment of small and great capital by the purchase of undeveloped properties, giving them development, adequate equipment and intelligent management.

Sterling Placer Mine.

The Sterling hydraulic placer mine, located on Sterling creek, a stream flowing into the north fork of the Applegate near Jacksonville, has produced from \$25,000 to \$60,000 regularly for the past quarter century. The diggings comprise several hundred acres of deep red clay gravel deposit. The equipment consists of a 25-mile ditch carrying 2500 miners' inches, and supplying water for two and a half to three months in the year.

The Sturgis is another well-equipped and productive placer mine. It has nearly 1000 acres of workable ground that gives returns of from \$8000 to \$10,000 per acre.

Opportunity for Wealth.

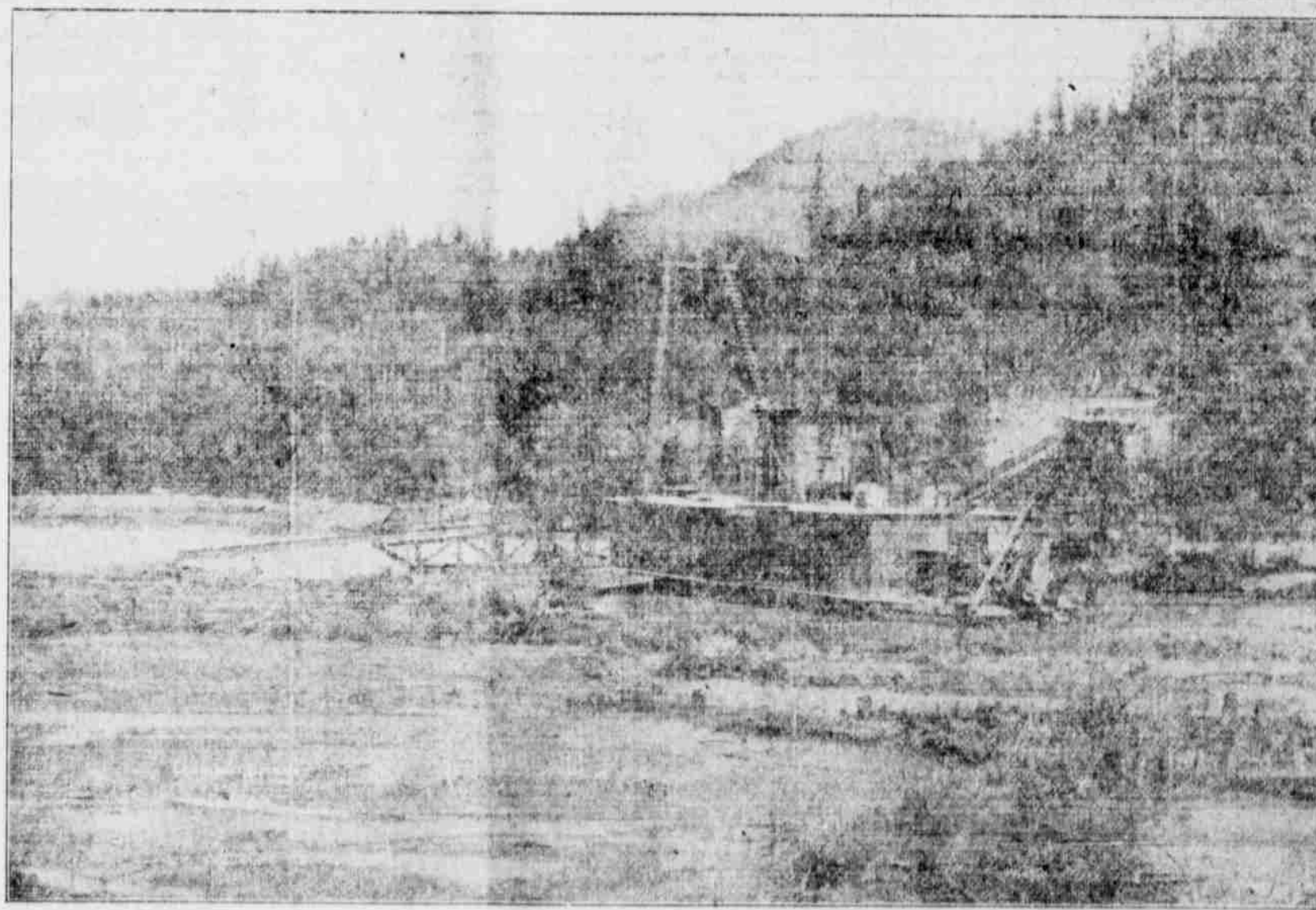
The rich old channels along the many streams offer excellent opportunity for money-making by dredging. Operations of this character so far are confined to Foote creek, northern Jackson county, where the big gold dredge of Champlin & Co. has been at work for the past six years with excellent results. The flood basin on this stream has a length of six miles, and a width of two miles, carrying gold at the rate of 50 cents a yard. The success of the Foote creek dredge should lead others to enter the gold dredging field here, as there is unlimited ground similar in character, with equally favorable conditions in the matter of water and timber.

Though this district has a number of producing quartz mines, this feature of the gold mining industry is in its infancy. Quartz mining has been followed here for almost as long a period as placer mining. Many notable discoveries have been made.

Many Quartz Mines.

There are 52 quartz mines in the districts tributary to Medford, and more than three times that number of claims. The free-milling character

of the quartz makes it easy of reduction. Jackson Creek, 6 miles distant; Blackwell Hill, 10 miles distant. The mining districts tributary to Medford with quartz mines are: Kanes Creek, 14 miles distant; Galt Creek, 16 miles distant; Foote Creek, development or in active operation, 17 miles distant; Evans Creek, 20 miles distant; Upper Applegate, 35 miles distant; miles distant.



DREDGING FOR GOLD IN THE ROGUE RIVER VALLEY.

Copper Mining District.

The copper mines of the Blue Lodge district, though located in Siskiyou County, 5 miles south of the state line are tributary to Medford, the only means of reaching them being by wagon road from this city, a distance of 35 miles. The deposits of copper in the district have been exploited and developed sufficiently to prove them beyond any possible question the greatest bodies of copper in the



COAL MINE BEING DEVELOPED NEAR MEDFORD.

district, though located in Siskiyou County, 5 miles south of the state line are tributary to Medford, the only means of reaching them being by wagon road from this city, a distance of 35 miles. The deposits of copper in the district have been exploited and developed sufficiently to prove them beyond any possible question the greatest bodies of copper in the

SOUTHERN OREGON GRANITE.

Southern Oregon boasts of the fact that it has large quarries of granite and marble, producing as fine stone

as is found in the west. Marble has as yet been worked but little, only whole companies an area of 2000 to a lack of transportation, but this granite of the Siskiyou, with an output of from 3500 to 6100 feet. Fully 1000 claims have been located in the district. There are 10 local granite quarries, occupying a strip 10 miles wide, and with claims located continuously upon them for a distance of 25 miles.

In addition to the rock crushers the plant is fully equipped with air compressors, air drills, grinding and finishing machinery for turning out first-class dimension granite for building purposes, and polished granite for monumental work and their purposes, all being operated by electric power, furnished by the Rogue River Electric company. This granite has the reputation of being the best quality of granite for monumental and building purposes on the coast, and, in fact, is pronounced by experts to be fully equal to the celebrated Maine granite produced in large quantities.

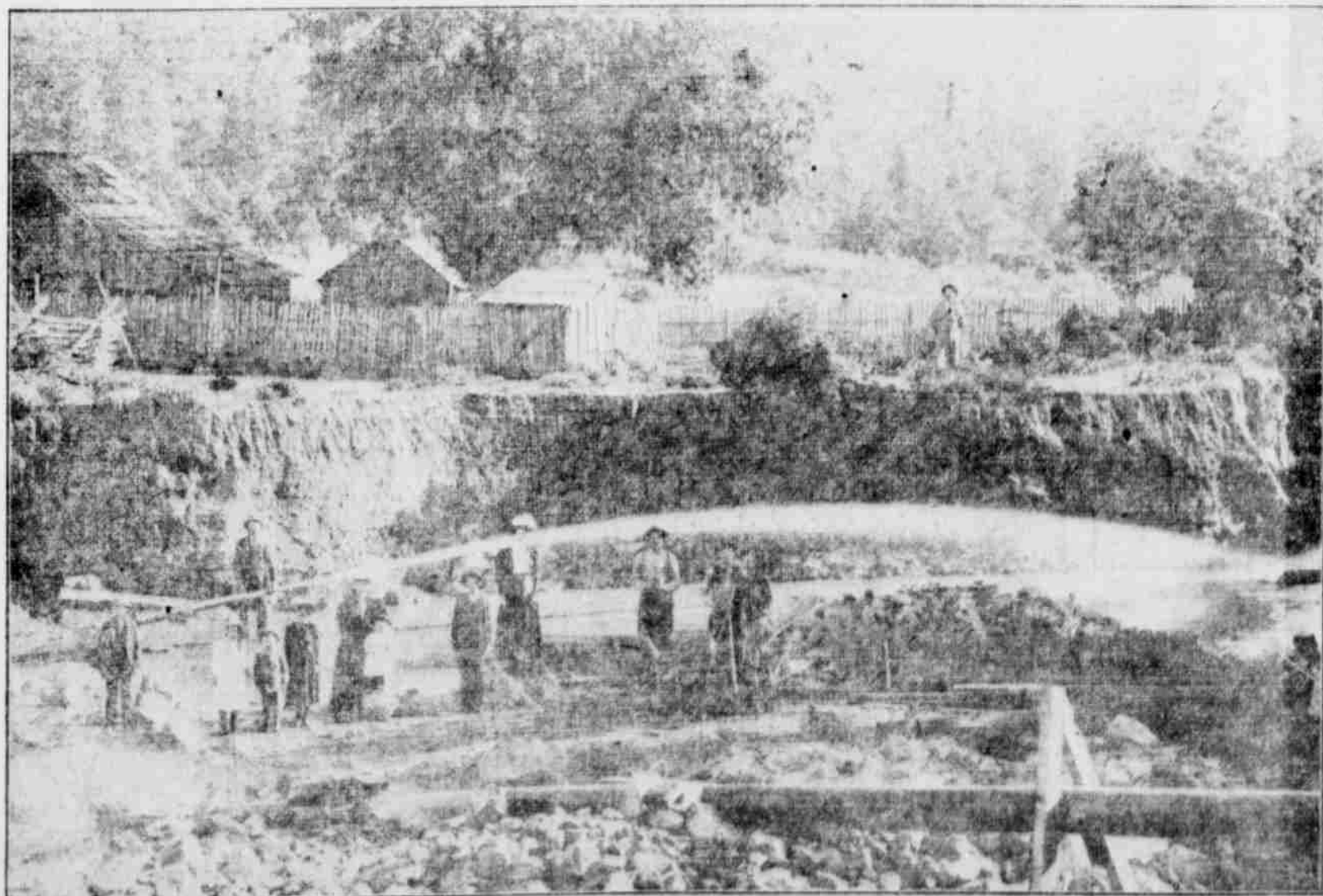
The quarry has a big future before it, and so far has been unable to supply the demands for monumental building purposes.

The quarry is admirably located just above the sidetrack of the Southern Pacific railroad near Tolo. The crushed granite is conveyed from the crushers on a conveyor belt from whence it is conveyed to the bins, and then from the bins unloaded into cars on the sidetrack, all being done by gravity.

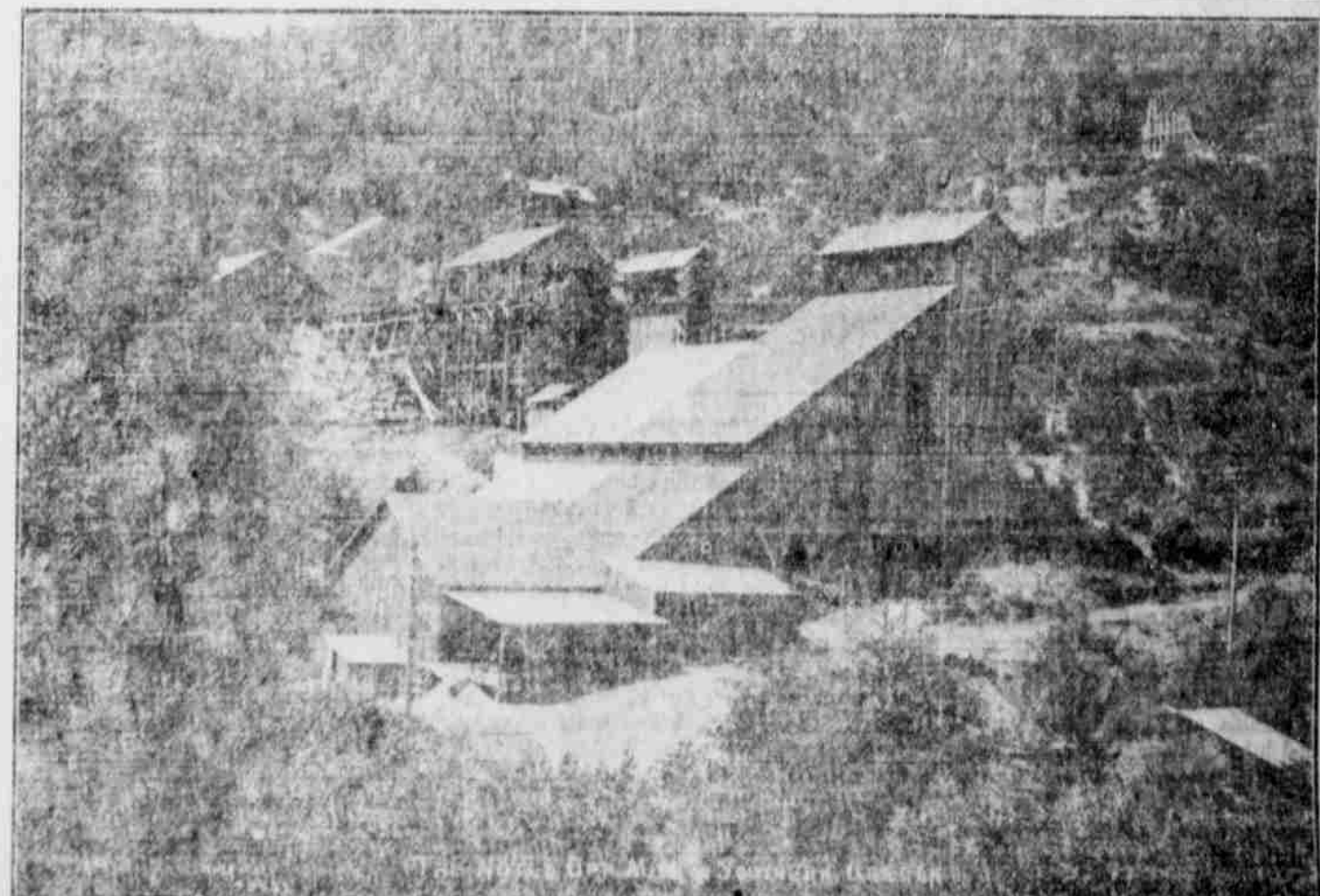
The monumental and building stone is transported on an incline track direct to cars on sidetrack.

This plant has cost over \$50,000 to date, and from 30 to 50 men are employed when in full operation.

The Oregon Granite company of Medford is also doing an extensive business in granite. The product of its quarries, which are located in the foothills west of Medford, is said to be as fine as any stone west of the Siskiyou river, comparing favorably with Barre.



PLACER MINING ALONG ROGUE RIVER.



ONE QUARTZ MINE, A STEADY PRODUCER, NEAR JACKSONVILLE.