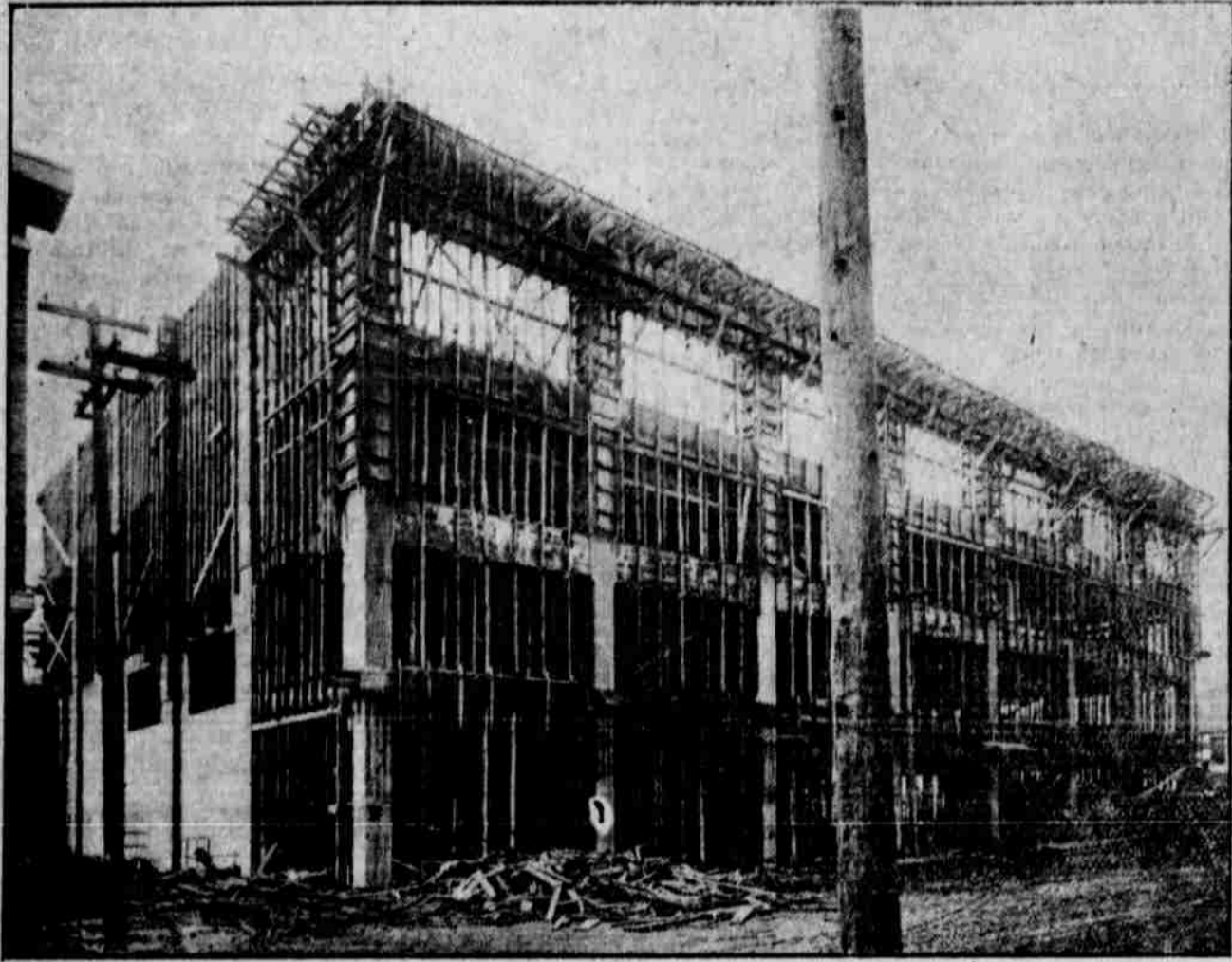
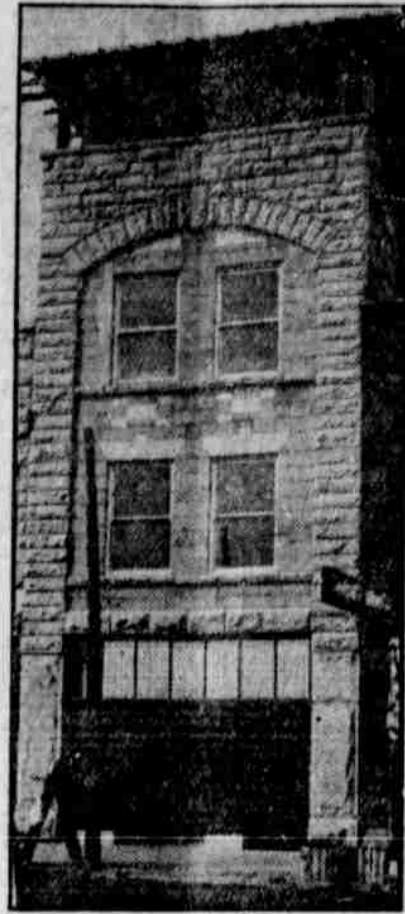


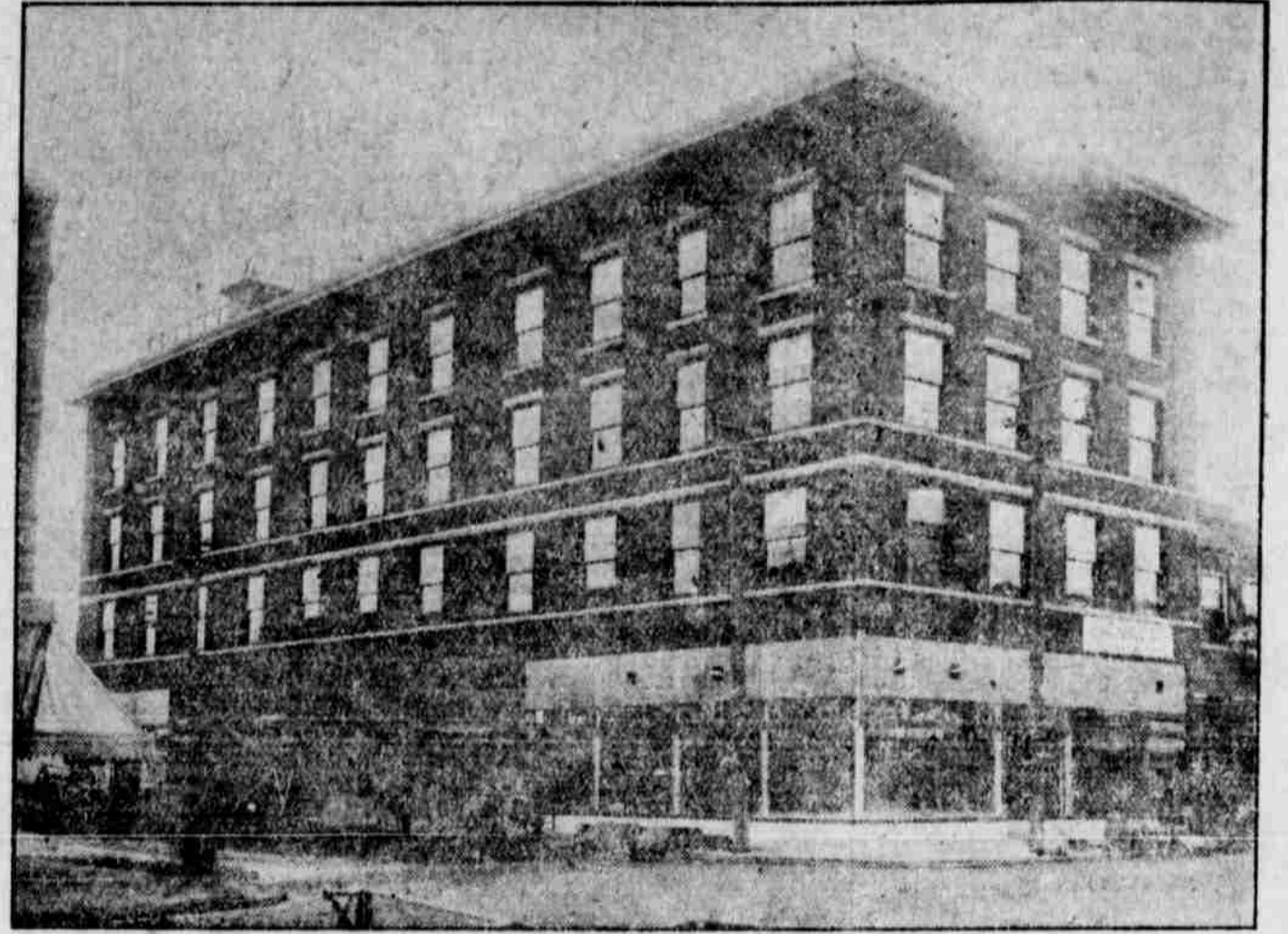
Some of the Many Fine Buildings Constructed in Medford in 1910



MEDFORD FURNITURE AND HARDWARE CO. BUILDING.



ELECTRIC BUILDING.



GARNETT-COREY BUILDING.

During the past year Medford has made the greatest strides in its history in the matter of erecting substantial business blocks. The accompanying illustrations show a few of the larger ones. It has been estimated that \$5,000,000 was spent by Medford in various improvements during the past year. The business section of the city is fast taking on a most metropolitan aspect.

The year 1910 has seen one four-story business block completed in the city and a second one under way. Both of these buildings are modern in every respect. Steam heat, modern electrical appliances and elevators are becoming necessary in each building being erected. The starting of work on a modern four-story building no longer excites comment in the city. Yet with the completion of these buildings and their new offices, there is still a dearth of offices for rent.

The Medford Furniture Building.

Early spring will witness the completion of the Medford Furniture & Hardware company's building on the corner of Central avenue and Sixth streets. This building is the largest in the city, covering a quarter block. It is four stories in height and is built of reinforced concrete, at an estimated cost of \$100,000. The building is being erected by Johns & Turner, architects and builders. It has a large, commodious basement and four elegant floors. Three of these and the basement will be occupied by the owners. The top floor will be devoted to offices.

The Garnett-Corey Building.

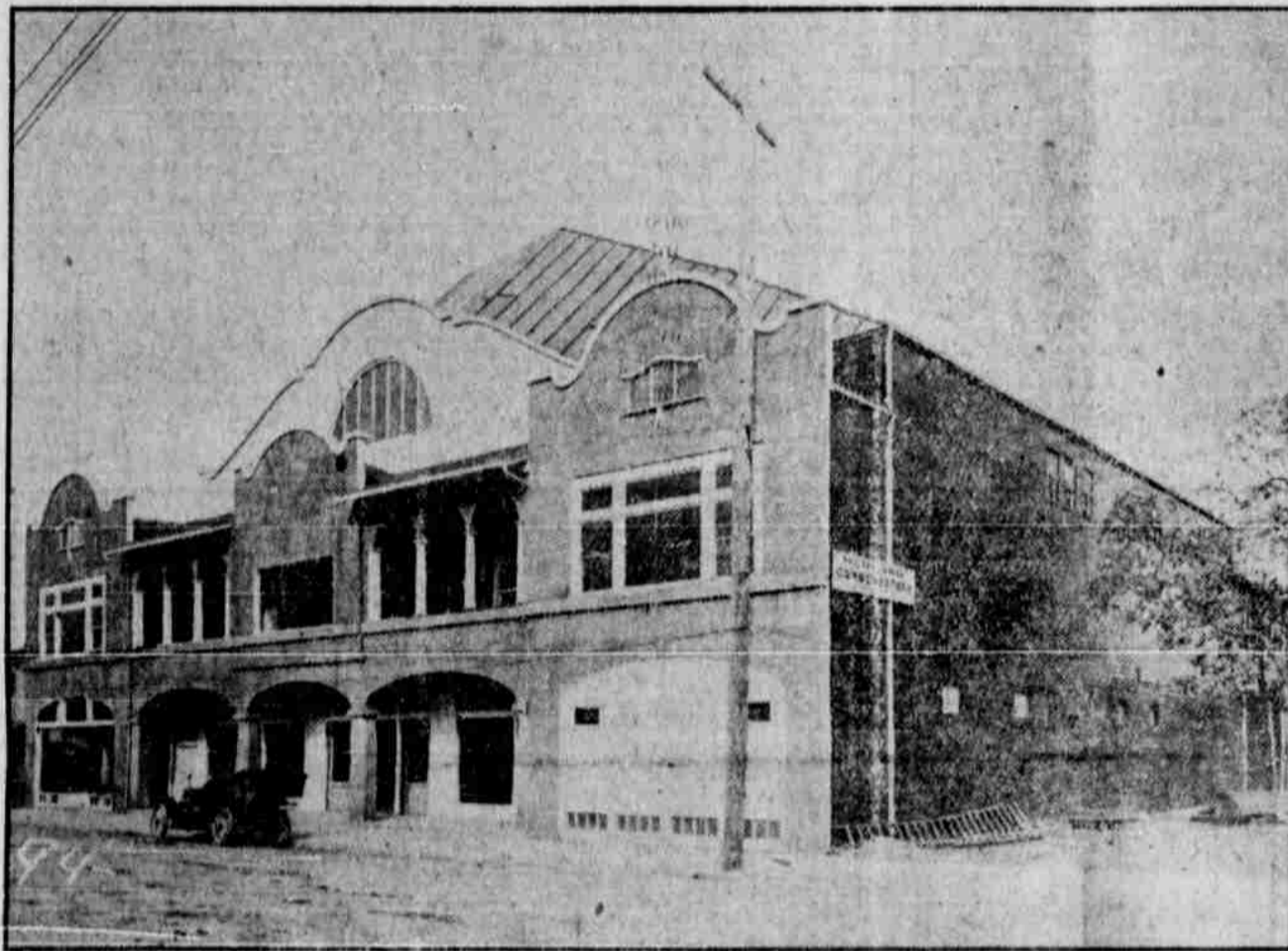
The four-story building of the Garnett-Corey company at Main and Grape streets is the first four-story building to be completed in the city and is a handsome structure. It is equipped with all late devices, which includes an electric elevator. It is built of a dark red brick and is trimmed with granite. Its cost was in the neighborhood of \$100,000. On its roof is a spacious roof garden, from which the entire valley may be viewed.

Home Telephone Co.

The Home Telephone company during the past year completed its home on Sixth street, erecting a substantial two-story building in which their plant is housed.

The Natatorium.

The Medford Natatorium is the finest amusement palace in the state, barring none. It is a spacious building in which bowling alleys, billiard halls, skating rinks, dancing



NATATORIUM BUILDING.

halls, a plunge and other devices for amusement are found. It was erected at an estimated cost of \$60,000, the fixtures running this figure higher.

The Electric Building.

The Electric building, erected by the Rogue River Electric company on West Main street, is a handsome structure of granite front and cement walls. The building is three stories in height and is occupied by the Electric company. Southern Oregon granite was used in its erec-

Medford Grocery Building.

Owing to a large increase in business, the Medford Grocery company, wholesalers, during the past year have erected a handsome new home of brick on Front and Tenth streets. The building is large and gives them a splendid home. It cost in the neighborhood of \$30,000.

Odd Fellows' Building.

The Medford Lodge of Odd Fellows are just completing a handsome three-story business block on Sixth street, which will be used for business purposes, the third floor being a lodge room. It cost in the neighborhood of \$30,000.

St. Mark's Block.

St. Mark's block, erected on the corner of Main and Holly streets, is



ODD FELLOWS' TEMPLE.

one of the most handsome buildings in the city. It is constructed of Southern Oregon granite and is two stories in height. It cost in the neighborhood of \$40,000.

Medford National Bank.

The Medford National bank during the past year has doubled the size of its bank building by erecting an addition at a cost of \$30,000. This gives several more offices in the building and three stores.

The Sparta Block.

The Sparta building, on the corner of Main and Riverside is to be a handsome three-story building when completed. It is being erected by John M. Root and associates at an estimated cost of \$30,000.

Davis Block.

One of the handsomest buildings erected in the city during the past year is the Davis block, on the corner of Central and Sixth. This building is of white enamel brick, trimmed with granite, and was erected at a cost of \$40,000 by A. A. Davis.

In addition to these buildings completed during 1910, a large number of buildings are either under construction or are projected for the coming year. Among these is the Masonic temple, which will cost approximately \$50,000, work on which will start early in the spring.



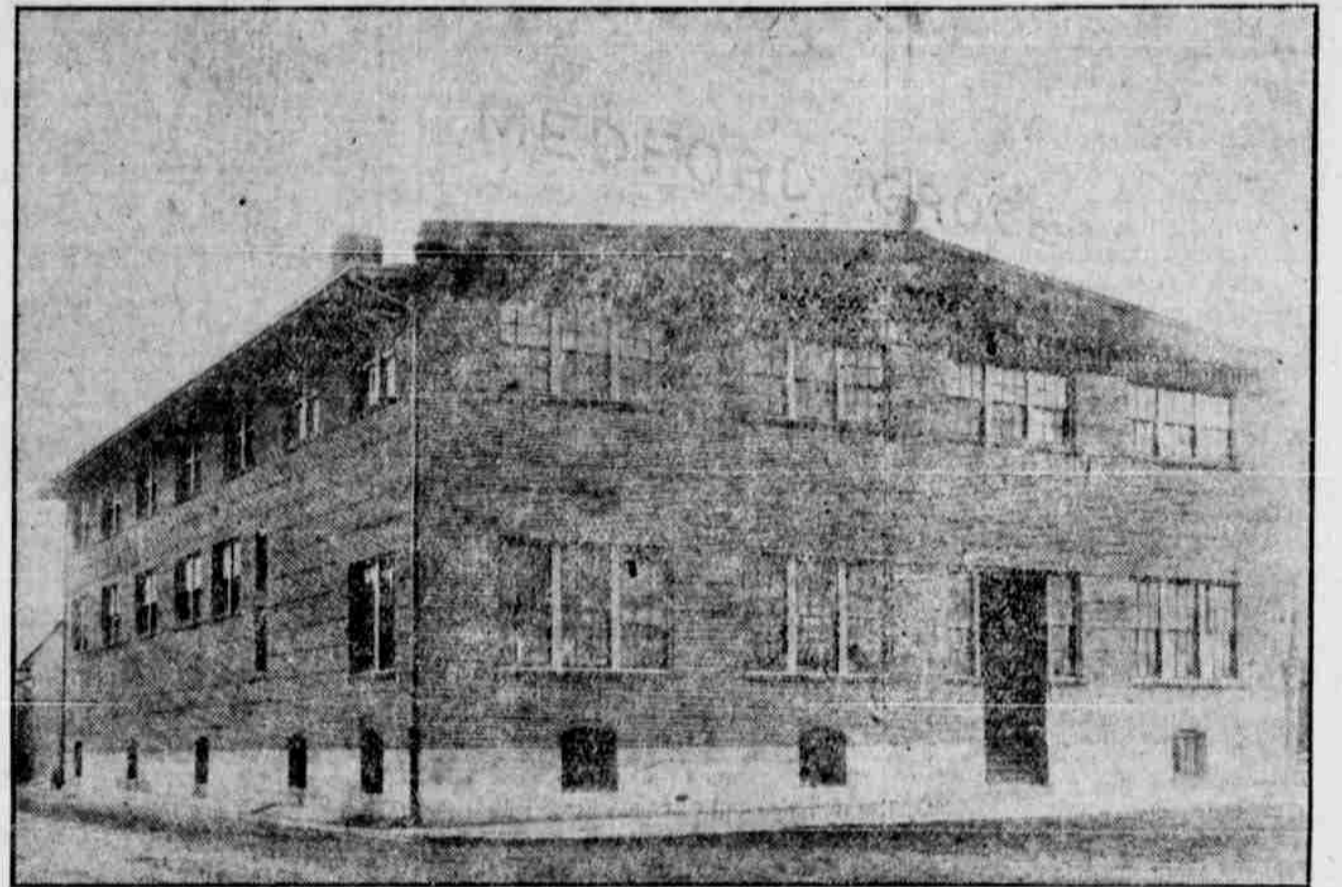
SPARTA BUILDING.

The Catholic Sisters will start work in March on a \$100,000 hospital to stand on the heights overlooking the city.

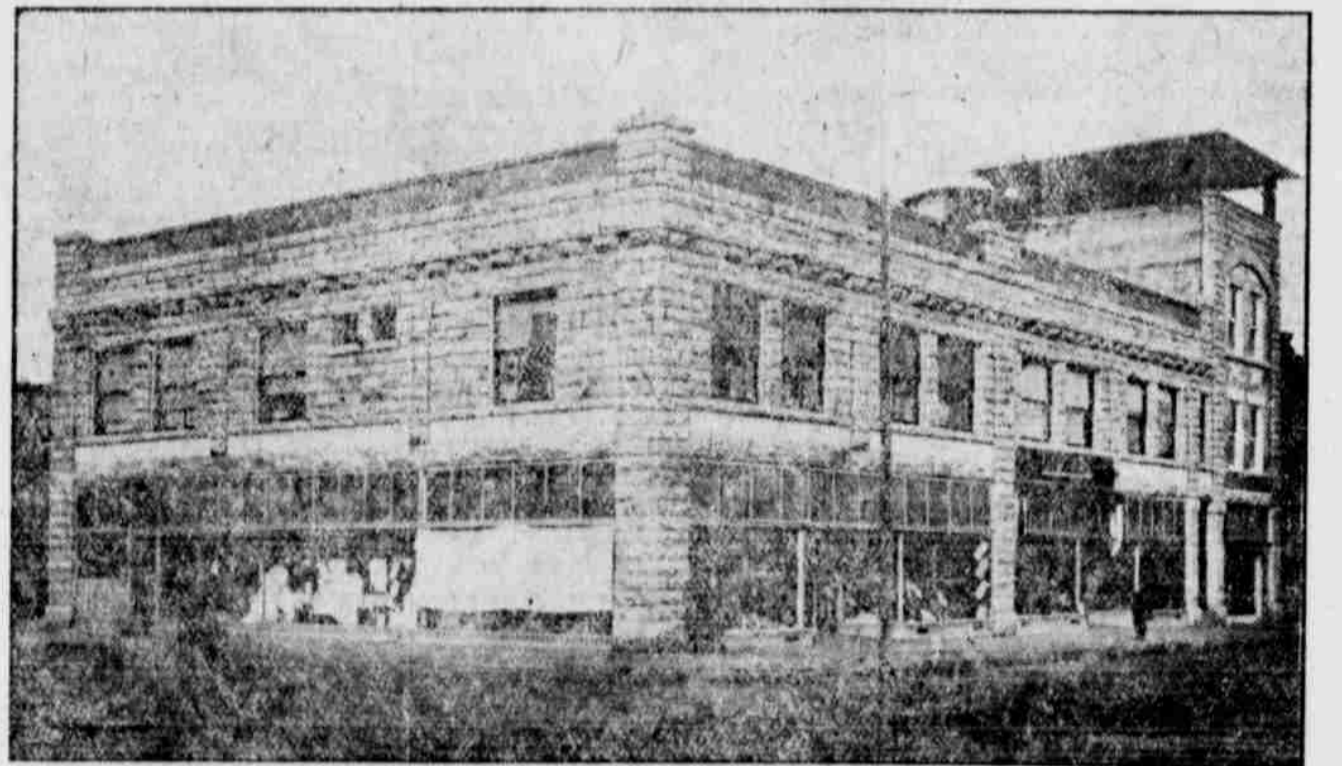
Several new church buildings are planned to take the place of present structures.

The First National bank is also contemplating the erection of a new building for banking purposes.

One-third of the Mail Tribune building has been completed and work has started on the second third.



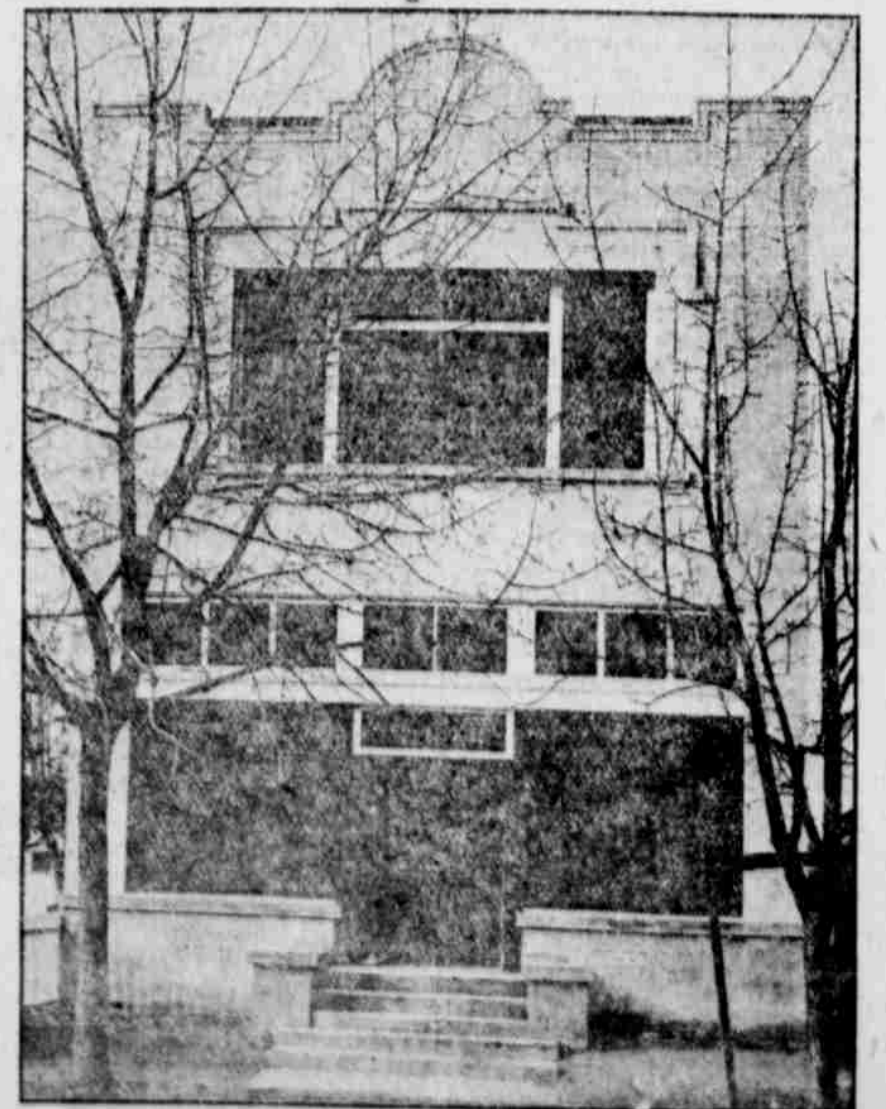
MEDFORD GROCERY CO.



ST. MARK'S BUILDING.



MEDFORD NATIONAL BANK.



HOME TELEPHONE BUILDING.

The entire building will be erected early in the new year and will be 120x100 feet in size. It is a two-story concrete building. The builders are Johns & Turner. It stands on the corner of Fir and Sixth streets. The third of the building completed houses the University club as well as the Mail Tribune.

Want-advertise and get some really efficient people to competing for that vacancy in your office.