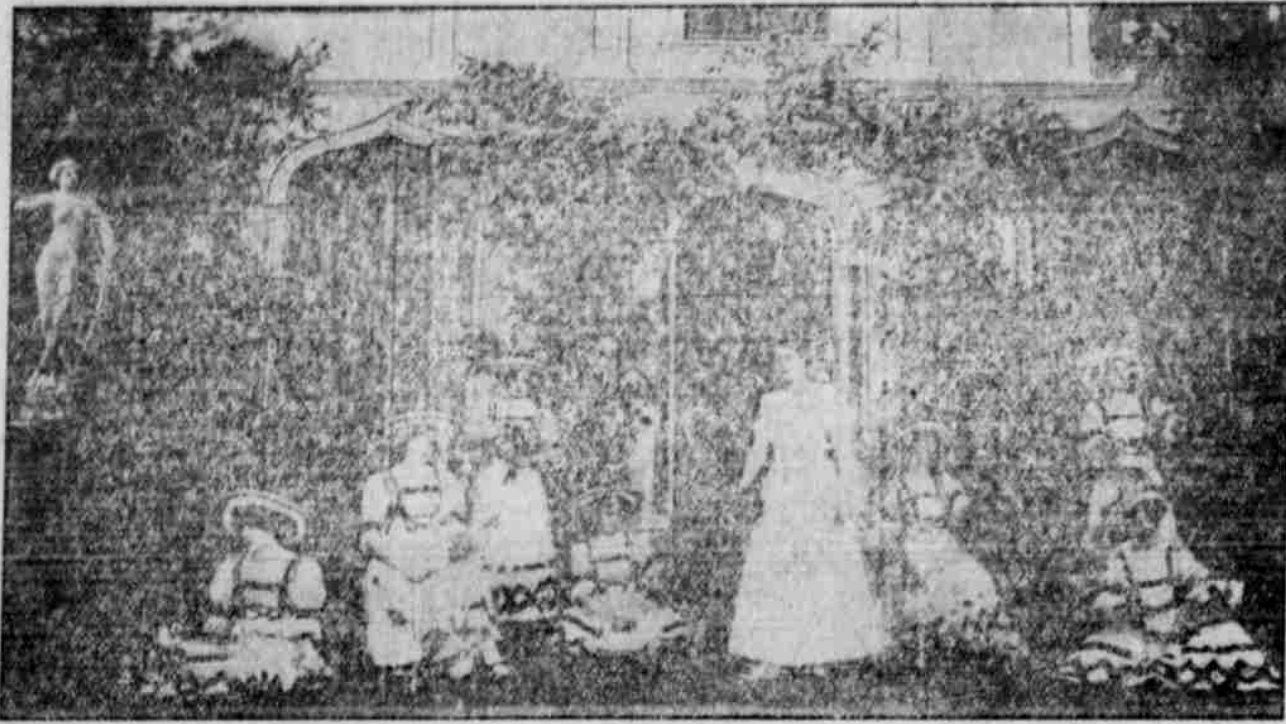


Seat Sale Opens Saturday Morning
Scene From The Kissing Girl



LARGE AUDIENCE GREET'S FIGMAN

"Mary Jane's Pa" Presented to a Large Return Audience—Mr. Figman Repeats Former Success—Well Supported by Miss Lackaye.

The splendid audience last night that turned out to see the second performance in this city of "Mary Jane's Pa" is proof beyond a doubt that this splendid play and capable company have merit that makes an impression that one remembers.

Max Figman is easily among the first of American comedians. He is a master of high comedy, never indulging in the grotesque or losing for one moment his character in order to gain a laugh. The play is well suited to Mr. Figman in that it is a clever mixture of comedy and bits of pathos. He carries his audience with remarkable skill from laughter to the verge of tears.

He is most capably supported by his company. Miss Helen Lackaye is so superior to many ladies who are starting that to make a comparison would be odious. Miss Lackaye comes from a family of actors. Her brother, Wilton Lackaye, we all remember with pleasure in his recent performance of "The Battle."

But with all the success and glamor of "Mary Jane's Pa," Mr. Figman has his troubles. This is the last season for his present play and to find another equal in merit, that will suit his ability, is the Gordian knot that is hard to unravel. Last summer, he tells the writer, he read more than a hundred plays, but could find none that would be a satisfactory hand out to the American public. Some of the plays had merit and comedy, but the comedy was too subtle for an audience that attends the theater for the pleasure of the hour—others were too trashy. So the great trouble is to find the happy medium. However, with an actor of Mr. Figman's ability, he would make a good performance out of even a moderate play. But then, again, when an actor has set his mark the public will not allow him to fall below the audience to which he has risen.

So, taking it for all in all, the actor's lot is not a happy one. Let us hope that Mr. Figman will find a vehicle suitable to his ability and that he may again visit us with a play and excellent supporting company such as he now has.

ED. ANDREWS.

FELL FROM BUILDING; BURIED THIS AFTERNOON

I. T. Conser, whose death occurred at the Southern Oregon hospital Wednesday afternoon as the result of injuries sustained by a fall in the Big Bend Milling Co. building six days previous, will be interred in the Oddfellows' cemetery this afternoon.

He leaves a wife and one child. The funeral will be conducted under the auspices of Medford Lodge, Modern Woodmen of the World, of which the deceased was a member.

TOO LATE TO CLASSIFY

FOR SALE—\$700; new 4-room house and bath, 52-foot lot on Betty st., near Liberty st.; terms \$300 down. Inquire 4 S. Orange. If

WANTED—To rent small furnished house or housekeeping rooms. Address B 10, care Mail Tribune office.

SNOW CHECKS FOREST SEEDING

Cat Hill, Scene of Disastrous Fire Last Summer, Now Covered by Blanket of Snow—If Ground Freezes Work Must Cease.

Deep snow has checked the work of reseeding the burned-over areas in the Cat Hill district of the Crater National forest, and should the ground freeze the work must cease entirely for this year.

Cat Hill, which last summer was the scene of the most destructive fire in Southern Oregon, and where United States troops fought for weeks to check the flames, is now covered with a blanket of snow 10 inches deep.

Supervisor M. L. Erickson states that unless freezing ceases the reseeding will be continued broadcast on the surface of the snow. He has received no official word from the man in charge of the work.

CATARRH WILL GO.

Relief Comes in Two Minutes—Complete Cure in a Few Weeks.

Don't go on hawking yourself sick every morning; it's cruel, it's harmful and it's unnecessary.

After breathing HYOMEI, the wonder-worker, you are not rid of vile catarrh, you can have your money back.

No stomach dosing—Just take the little hard rubber pocket inhaler that comes with each outfit, and pour into it a few drops of HYOMEI. Breathe it according to directions. In two minutes it will relieve you of that stuffed up feeling. Use it a few minutes every day, and in a few weeks you will be entirely free from catarrh.

Breathing HYOMEI is a very pleasant and certain way to cure catarrh. Get an outfit today; it only costs \$1.00; it's worth \$1000 to any catarrh sufferer. For sale by Chas. Strang and druggists everywhere, who guarantee it to cure catarrh, croup, coughs, colds, sore throat and bronchitis. After you once own a Hyomei hard rubber inhaler which comes with the outfit, you can buy an extra bottle HYOMEI liquid for only 50 cents; the inhaler lasts a lifetime.

Boys Heavy Fleece Lined Shirts and Drawers in Sizes 24 to 34 Saturday 25c ea.

Ladies Heavy Jersey Ribbed Gray Mixed Union Suits, 75ct. values 50c each	5 doz. Misses Gray Mixed medium Union suits Saturday at 25c the garment
--	---

Santa Claus made his first visit here today when we put on sale the Largest and Most Complete Line of Dolls ever shown in Medford. Most any Style or Quality.

1c up to \$10.00 Each

XMAS POST CARDS If you want to see a swell line of Xmas post cards, take a look in our west window.	CALENDERS Nearly 100 different styles to select from, each in box, ready to mail. Sale prices.
---	--

CHOICE 1c EACH. 10c TO 75c EACH.

HUSSEY'S

Land For Sale

Fertile fruit and alfalfa land in small and large tracts. Cleared and uncleared. Terms and price reasonable.

Address Box 16, Tolo, Oregon

MAIL TRIBUNE WANT ADS BRING RESULTS.

Splendid Bargain

IN HOUSE AND LOT
 If taken this week, will sell close in lot with 5-room modern house; pays 15 per cent on investment. See
GEO. C. CONTIUS,
 116 East Main Street, Medford, Oregon

Campbell & Baumbach

MORTGAGE LOANS, COUNTY WARRANTS, CITY AND SCHOOL BONDS

Money on hand at all times to loan on improved ranches and fruit land.

PHONE 3231. 208 FRUITGROWERS BANK BUILDING.

J. E. ENYART, President. J. A. PERRY, Vice-President.
 JOHN S. ORPH, Cashier. W. B. JACKSON, Ass't. Cashier.

THE MEDFORD NATIONAL BANK

Capital, \$100,000.00
 Surplus, \$20,000.00

SAFE DEPOSIT BOXES FOR RENT. A GENERAL BANKING BUSINESS TRANSACTED WE SOLICIT YOUR PATRONAGE.

MEDFORD MAIL TRIBUNE WANT ADS ARE BUSINESS GETTERS

The Famous Rayo

The Lamp with Diffused Light

should always be used where several people sit, because it does not strain the eyes of those sitting far from it.

The Rayo Lamp is constructed to give the maximum diffused white light. Every detail that increases its light-giving value has been included.

The Rayo is a low-priced lamp. You may pay \$5, \$10 or even \$20 for other lamps and get a more expensive container—but you cannot get a better light than the Rayo gives.

This season's Rayo has a new and strengthened burner. A strong, durable shade-holder keeps the shade on firm and true. Easy to keep polished, as it is made of solid brass, finished in nickel.

Once a Rayo User, Always One.

Dealers Everywhere. If not at yours, write for descriptive circular to the nearest agency of the

Standard Oil Company
 (Incorporated)

XMAS GALLERY

For High-Class Photos pose with Mackey and you will always be pleased. My prices will also please you. Your loved ones will be pleased to receive a photo on the new process. Artistic posing and lighting, beautiful toning and swiftest line of cards. Over 10,000 to select from.

Over ELLIN & REAGAN'S GROCERY STORE

The Fair Oaks Orchard Tracts

Close to Medford, good roads, splendid soil; 70 acres now planted to pears and apples. Prices right and terms easy. Let me show you a good real estate investment.

Earle C. Sabin

Room 202 Fruitgrowers Bank Building.

AN OPEN LETTER

Medford, Oregon, Nov. 21, 1910.
 Mr. I. N. Vestor,
 Medford, Oregon.

Dear Sir: We wish to call your attention to a few exceptional bargains we are offering for a short time only, and which we are certain will appeal to you, be you a recent arrival in Medford or one who has been here for some time. If a recent arrival we would call your attention to propositions A and C. If you know the field and are looking for an investment examine particularly propositions B and D. They are snaps—ask any person who knows values in city or valley. Here are the four propositions we offer:

(A)—City lot 50x100 on which is located a 4-room house. One block from pavement. Located at Hamilton and Eleventh. Price \$1600. Terms to suit. This is an exceptional chance for the new arrival who does not care to throw his money away in paying rent.

(B)—A city block, bounded by Third and Fourth, Fir and Evergreen, just opposite the new \$50,000 passenger depot of the Southern Pacific, where our box factory is now located. The lot is 170 by 300 in size. Buildings go with property. Our price is \$21,000. Terms.

(C)—160 acres of land 1 1/2 miles from the P. & E. railroad, near Derby, Ore.; 50 acres good fruit land when cleared; 1,000,000 pine timber. Talking of bargains—here is one. We will let this tract go for \$25 an acre.

(D)—1500 acres of cut over timber land; 2 1/2 miles west of Jacksonville. Here is a great chance for you, Mr. I. N. Vestor, for it can be cut up and sold at splendid profit. Our price is \$15,000, with terms.

We are certain that one of these propositions will appeal to you. Drop us a line. We are

Most sincerely,
CRATER LAKE LUMBER CO.,
 Edgar S. Hafer, Manager.

The P. & E. R. R. will soon be at
Butte Falls, Oregon
 We can then handle your orders. Place them now. Write or Phone us for prices.
Butte Falls Lumber Co.

MEDFORD MAIL TRIBUNE WANT ADS ARE BUSINESS GETTERS. MAIL TRIBUNE WANT ADS BRING RESULTS.