

**PERSONAL ITEMS**

Mrs. D. W. Beebe and daughter, Elsie, were in Medford Monday. Miss Mary Mee and sister Mrs. Emma Beebe from Central Point were in Medford on business Monday.

Fifty-three acres special, 10 acres coming into bearing orchard. Call on J. B. Wood, Condor Water & Power Co.'s office.

E. O. Bissell has returned from a two months' stay at Table Rock, where he was building at the Mearl orchard.

Is your Louse wired? One cigar less a day would pay for a hundred per cent increase in comfort. Start living the electric life.

Mrs. A. P. Frierson and daughter, Mrs. J. C. Pendleton, were recent Medford visitors.

Every light but electricity gives off smoke and smoke contains soot which deposits on your wall paper, curtains, draperies. Electric light glows in an air tight bulb.

Mr. and Mrs. J. H. Lydiard are spending some time with their son on Jackson street.

Dr. Stephenson, graduate optician, fits glasses to correct any defect of the eye. Office over Allen & Reagan's. Phone Main 1851.

N. C. Bennett is improving his residence with a new porch.

Moor-Ehnl Co., exclusive agents for property in Crescent and Wakefield, Or., townships on Hill's new railroad. See them. Crescent is division point.

Col. R. C. Washburn of Table Rock was in Medford Tuesday evening attending a meeting of the board of directors of the Rogue River Fruit and Produce association, of which he is the president. The meeting was the regular monthly gathering of the board and only routine business was transacted.

Contractors will next week complete the new sewer system in Southside Addition, giving sanitary sewerage and drainage sewer, in addition to 30 lots in this addition, only five blocks from Main street, the closest-in good residence lots now offering in Medford. The matter of putting in the drainage sewer affords opportunity to drain basements and cellars and bring about the best sanitary conditions. Medford's up-to-date people only want up-to-date conditions in their residence quarters.

J. C. Pendleton and son, Verne, were in Medford Tuesday evening to get the latest election returns.

H. E. Gale of Merlin was in Medford Tuesday, attending the monthly meeting of the board of directors of the Rogue River Fruit and Produce association.

Six hundred feet of new cement sidewalk now being installed on grade established by the city engineer on South Riverside avenue shows the growth of the city. A large territory in this section will be taken within the corporate limits in a few months. It is within a few blocks of Main street and should have been included in the city long ago.

The Bissell home on North Central avenue was the scene of a merry gathering when they entertained a party of Table Rock friends Saturday evening to an oyster supper, after which an enjoyable time was passed in visiting and music and later refreshments of ice cream and cake were served. Those present were Mr. and Mrs. J. H. Lydiard, Mr. and Mrs. J. C. Pendleton, Col. and Mrs. R. C. Washburn, and Mr. and Mrs. S. K. Adams.

Have you had any of those raised doughnuts which they sell at the Spot Restaurant? Well they are fine and everybody is buying them. It is such a convenience to buy them fresh any day.

S. M. Mears, Jr., of Table Rock was in Medford Wednesday on a business trip.

If the ladies who have been so kindly awaiting the arrival of the turbans will please call they can have first choice. Mrs. Salter's Home Millinery Shop, cor. W. 9th and Peach street.

**Fownes Is Re-elected.** NEW YORK, Nov. 9.—Charles V. Fownes, democrat, is elected in the 14th congressional district and H. M. Goldfogel, democrat, is elected in the ninth district.

**Diekman Re-elected.** GRAND RAPIDS, Mich., Nov. 9.—Congressman Diekman (rep.) is re-elected by 1200 majority in the fifth district.

Now stocks make the stores new nowadays—make them "wonderlands" for people who like to see and own new and alluring things.

**Medford Conservatory** for Music and Languages. Natatorium Building. All Branches of Music. Full Faculty. G. Taillandier, Director.

**MISS FLORA GRAY, PIANO INSTRUCTION. STUDIO, 144 S. CENTRAL. PHONE MAIN 991.**

**NO EAST SIDE SITE FOR \$1**

**J. E. Enyart States That No Offer of Site for Federal Structure Near Natatorium for Nominal Sum Was Made—No Offer from West Siders**

"The report that a federal building site near the Natatorium has been offered the government free is erroneous," states J. E. Enyart, president of the Medford National bank. "I offered the government a site for \$20,000 on Riverside avenue, and if the government wants it it will cost them that amount. There has been no pool to purchase the property and turn it over to the government for a nominal sum."

Speculation is still rife as to the location of the building. A site was offered for \$1 on Holly and West Sixth street, but no other reduction was made.

**New Dancing Club.** At a meeting Tuesday evening the permanent organization of a new club, to be known as the La Crescenta Dancing club, was completed.

The following officers were elected: C. H. Redfield, president; F. S. Torrey, vice president; C. E. Reed, secretary and treasurer. Resolutions and bylaws for the governing of the organization were drawn up and adopted. A list of names was presented and voted on, with the result that the club starts off with a charter membership of about forty from among the young men and young married men of the community. The date of the initial dance was set for Thursday, Dec. 1, and it is the plan that others follow at intervals of about four weeks apart throughout the winter and spring.

**DAVIS LEADS.** (Continued from Page 1.)

The county commissioner race is a free-for-all. Patterson, Myers and Davis all have a good chance to win out. It is impossible to state what the ultimate result will be. But certain it is, it will be close.

Fourteen complete county precincts give Davis 383, Myers 487 and Patterson 268.

At 1 o'clock the Ashland vote gave Davis 116 and Patterson 308. At the same time Medford's three incomplete precincts gave Davis 293, Patterson 147. Now, take Davis' lead in Medford, or 146, and balance it against Patterson's lead in Ashland of 192 and Patterson has a lead of 46 votes in the two towns. Now, take the complete returns on 14 precincts counted and Davis has 852, while Patterson has 762, Myers 715. Thus Davis leads him if the ratio is maintained.

Late reports give Davis 82 in Rutte Falls to Patterson 4. Thus Davis' lead is strengthened. Patterson has Talent yet to aid him overtake Davis. Central Point gives Davis 28, Patterson 35, Myers 133, so Davis' lead is safe if Talent does not pile up a big vote for Patterson.

But there is another factor. J. W. Myers of Central Point has 715 votes so far counted.

The contest is truly a three-cornered fight.

**Teddy Went to Bed.** OYSTER BAY, N. Y., Nov. 9.—After hearing of the defeat of the republican ticket in New York, Roosevelt refused to see anybody and went to bed.

**Seven in Louisiana.** NEW ORLEANS, Nov. 9.—Seven democratic congressmen were elected in Louisiana.

**Republicans Win Delaware.** WILMINGTON, Del., Nov. 9.—Indications are that the republicans have elected a majority of the members of the state legislature, thus assuring the re-election of United States Senator Dupont, republican.

**Bryan's Home County.** OMAHA, Neb., Nov. 9.—Aldrich (rep.) has carried Herrick county and come out of Lincoln. Bryan's home, with 1000 majority over Dahlmann, democrat.

**THIRTY THOUSAND PLURALITY FOR OKLAHOMA GOVERNOR**

OKLAHOMA CITY, Okla., Nov. 9.—Lee Cruise (dem.) was elected governor of Oklahoma with a plurality of 30,000. The woman suffrage amendment was defeated.

H. S. McGuire (rep.) was re-elected to congress. Other congressional results are in doubt.

**HOME METHODS IN THE FACTORY.** Every one knows what would happen if a housewife put down her fruit and berries by simply pouring them from the kettle into the jars and allowing them to stand with loose covers. Her fruit would soon ferment and spoil. Cooking fats are just as liable to spoil, yet most manufacturers of lard and other cooking fats pack their products in tins or loose-covered tins, exposed to air, dust and odors.

Cottolene, however, is packed in pairs of special design, sealed absolutely airtight, so that the makers guarantee Cottolene to remain indefinitely as sweet and as fresh as the day it was made.

**Wanted**

Hand hands. Woman cook. Man for general house work. Laborers.

**FOR SALE.**

Rooming house, close in. Business, \$200 daily, at invoice. Business with long lease; average sales, \$90 daily; \$4,000. Chair barber shop in good town. Runabout, cheap. Interest in splendid business.

**FRUIT LAND.**

600 acres for subdivision, all good. \$35 per acre, terms. 200 acres, near Eagle Point, fine subdivision, \$75 per acre, terms. 160 acres, 120 fenced, 20 ploughed, 5 springs, small orchard buildings, 4 horses, tools, etc., \$4000. 120 acres, 35 cultivated, fine bench and bottom land, \$3600, all tracts, unimproved, from 1/2 e up, close in.

5 and 10-acre tracts, full bearing. 35 acres, 1-2 in orchard, 9 acres alfalfa, easy terms.

10 to 100 acres, cleared, close in, fine pear land, \$150 to \$200 per acre, good terms.

\$1000 will handle fine bearing orchard, close in.

18 acres 2 1-2 miles station; good buildings; 15 acres bearing and young orchard, \$6500, terms.

40 acres cleared, rich soil, close to Eagle Point, sub-divide, \$125 per acre.

10 acres, close in, buildings, water for irrigating, fine poultry and fruit ranch; \$3000, terms.

10 to 100 acres, 1 1/2 miles from post-office, best soil and cheapest buy in the valley; \$175 per acre.

34 acres, under ditch, fine pear and alfalfa land, 3 miles out, cleared and fenced, \$250 per acre.

**CITY PROPERTY.** 2-room house and lot, close in, easy payments.

12 lots, Palm and 2d sts., \$250 each. Modern bungalow, close in, \$1750. Westmoreland lots \$275.

2 lots in Kenwood, \$650. 2 lots, 58x126 each, \$500 for both. 2 4-room houses, lots 60x100, \$2300 takes both.

Lots in West Walnut Park, \$350, \$25 down, 10 monthly.

2 1/2 acres, in small fruit and truck, fine house, inside limits, \$7000; will trade for good stock ranch. Lots to trade for chicken ranch.

**FOR TRADE.** Property. Bearing orchard, 1 mile out, for city or Los Angeles residence.

Bearing orchard for Long Beach or 160 acres, no waste, in New Mexico, 3 miles from railroad, for city or ranch property.

**E. F. A. BITTNER** Room 206 Taylor & Phipps Bldg. Phone 4141 Main

**Try a dozen of our RAISED DOUGHNUTS sold at the SPOTCAFE They are homemade and fresh every day**

**Weeks & McGowan Co. UNDERTAKERS DAY PHONE 2271 Night Phones: F. W. Weeks, 2071 A. E. Orr, 3692. LADY ASSISTANT**

**Modern Hair Dressing.** has played havoc with the tresses of the fair sex, and druggists everywhere comment on the fact that they are selling large quantities of sage for making the old-fashioned "sage tea," such as was used by our grandmothers for promoting the growth of their hair and restoring its natural color. The demand for this well-known herb for this purpose has been so great that one manufacturer has taken advantage of the fact, and has placed on the market an ideal "sage tea," containing sulphur, a valuable remedy for dandruff and scalp rashes and irritations. This preparation, which is called Wyeth's Sage and Sulphur, is sold by all leading druggists for 50 cents and \$1 a bottle, or will be sent direct by the Wyeth Chemical company, 74 Cortlandt street, New York City, upon receipt of price. Leon R. Haskins, Medford, Or.

**Fine Millinery**

We make a specialty of fine millinery and can show you the largest assortments and the newest styles to be found in this section of the state. You are invited to call here and see the new ideas in millinery and if we do not have what you want already trimmed we will be pleased to make up something for you. You will find the prices as low as the lowest and we feel sure that we can save you money.

**\$5.00 Shapes \$1.98**

**\$2.75 Shapes 98c**

A line of untrimmed shapes, large and small, including blacks and many most popular colors, French Felts, Corded Silk, etc. Regular values \$2.95 to \$5.00. Special **\$1.98**

Another line of untrimmed shapes in Felts, black and colors; also a number of street hats. Regular values \$2.00 to \$2.75. Special **98c**

**Coats and Suits**

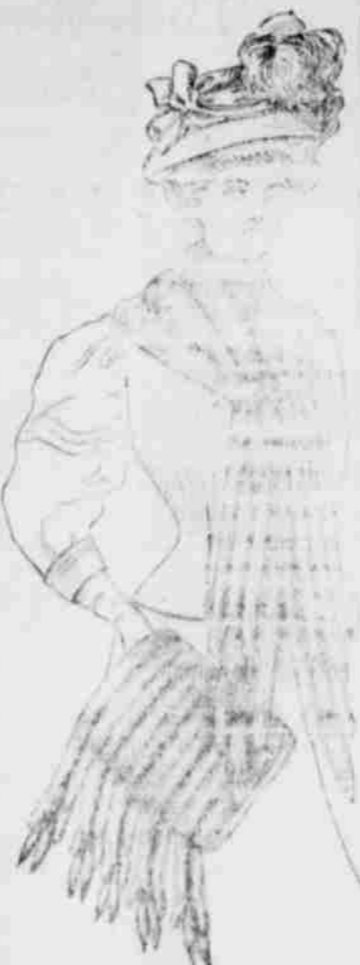
You will make a mistake if you do not see the large assortments of fine coats and suits that we have gathered here for your approval. You will find here the exclusive lines—lines that you will not find outside of the larger cities. Not only are the styles a little superior and the workmanship a little the best ever—but on account of opening up late we are selling our suits and coats at exceptionally low prices.

**\$3.50 Sweaters only \$2.95**

An all wool sweater, fancy knit; perfect fitting, colors red, gray and white; regular \$3.50 value. Special **\$2.95**



**On the West Side In St. Mark's Bldg.**



**SUITS COATS DRESSES FURS**

The assortments are very complete, the styles are the smartest that have ever been shown in a city the size of Medford—the values are all that you could wish to find.

**SUITS**—Smart styles, latest cloths and exceptional values. Come and let us show you these suits, especially the exclusive tailored styles. These hand-tailored suits are the favorites everywhere and you are sure to be pleased with them.

**COATS**—If you want something entirely new, something that is sure to give perfect satisfaction—a coat that shows distinction of style and perfect workmanship—you will come and see our line. You will find the prices right.

**DRESSES** in all the late fabrics and the most becoming and bewitching styles that have appeared in the east this season. If you haven't been in the store lately you should come and see what we have in new.

**FURS** are very much in demand and as the season advances we find that the better sellers are growing scarce. If you are in the market for a fur, now is the time to choose it.

**Medford's Quality Store**

**Emporium**

**O. E. Tackstrom, Prop.**

**PASADENA.** Nov. 9.—Pasadena complete gives Johnson 2,439; Bell 993. Arcadia, Sierra Madre and La Canada, Los Angeles county, complete, show Johnson 458; Bell 304.

**Sulloway Re-elected.** CONCORD, N. H., Nov. 9.—Congressman Sulloway, republican, has been re-elected in the first New Hampshire district and Congressman Frank D. Currier (rep.) in the second.

**Season Tickets**

For the

**NATATORIUM Entertainment Course**

Are Now

**READY FOR DELIVERY**

and may be had at the Nat. Box Office or Haskin's Drug Store.

**Price \$2.50**

which gives holder choice reserved seat for each of the five entertainments.

The first number of the Course

**MADAM LANGENDORFF CO. OF ARTISTS**

From the

**METROPOLITAN OPERA HOUSE.**

**THURSDAY, NOV. 17TH**

Seat Sale opens at Haskin's Nov. 10th. The first four days limited to season ticket holders. General sale begins Monday, November 14th.

Prices, \$1.00. Moral—Subscribe for a season ticket and save \$2.50.

**BELL CONCEDES HIS DEFEAT BY JOHNSON**

SAN FRANCISCO, Nov. 9.—Theodore A. Bell conceded his defeat for the office of governor today and sent a message of congratulation to Hiram Johnson, his successful republican opponent. The message follows: "The people of California have elected you as their chief executive for the next four years. I tender to you my congratulations and best wishes for a successful administration."