

### Rogue River Valley

is the most talked about section of the entire northwest—  
MEDFORD is the undisputed metropolis of this great valley.

**We Aim**  
to make **CUTHBERT'S HOUSE FURNISHINGS ESTABLISHMENT** IN MEDFORD a household expression for all that is high-class in our line and at **PRICES ADMITTING OF NO COMPETITION.**



We show over 250 patterns in **ROOM SIZED RUGS** and every one new and up-to-date. Here you can find **FRENCH WILTONS, BIGELOW, HARTFORD & SANFORD, BODY BRUSSELS, AXMINSTER** and **TAPESTRYS.** 1-3 SAVED ON PRICES QUOTED ELSEWHERE.

# Monarch Malleable RANGE

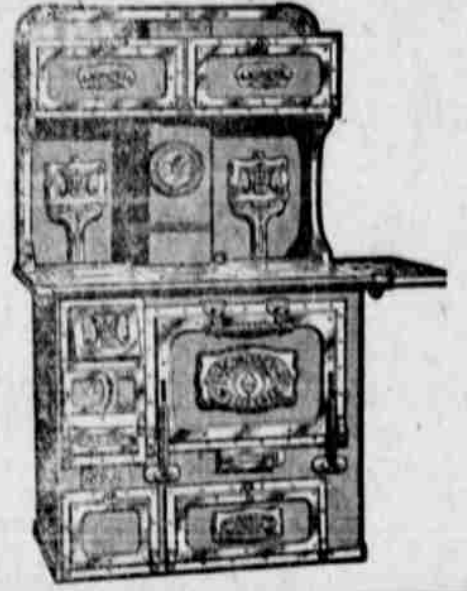
## A Range That Fairly Shot Into Fame

Here is a Range that is making the most wonderful records in the world as a perfect Baker and Fuel Saver. No Monarch Range is allowed to leave the factory until it is thoroughly tested and pronounced perfect. A Monarch Range sells for just a little more than the cheap kind. Why? For the simple reason that it costs more to make; but bear in mind it saves in fuel one-half its cost the first year. Why is it dealers handling the Monarch advertise a standing offer of \$30.00 for any Monarch returned? Because there is never any dissatisfied purchaser of the Monarch. Buy the Range that will last for years to be handed down to your children, still a perfect range,

working properly. You will find the Monarch at **Cuthbert's** Complete House

Furnishing Establishment, a furniture shop manned by efficient Furniture Salesmen and Mechanics. We bring to Medford the accumulated experience of years in connection with the well known firm of Wm. J. Sloane of New York and San Francisco, and are prepared to furnish ideas and estimates for the highest class furnishings at the minimum cost. Our new building is promised positively for the 15th of November, and until that date we will continue our record-breaking

An Introduction to Cuthbert's will lead to a profitable acquaintance with their UNQUESTIONED STYLE in HOUSE FURNISHINGS and also their PRICE SAVING METHODS. Beautify your living room with a Sanford 9x12 High Class Axminster Rugs Reduced during Sale from \$30.00 to \$22.50



**ONLY AT CUTHBERT'S** Can you purchase the famous ARTS & CRAFTS FURNITURE manufactured by **STICKLEY BROS.** Why buy cheap imitations? Come to Cuthbert's for the genuine.

### GREAT REDUCTION SALE

Solid Eastern built Oak Dressers, regular \$14.00, reduced to \$10.00  
\$18.00 reduced to \$14.00, \$20.00 reduced to \$15.00.

Chiffoneers to match at Equal Reductions,

## ROCKERS

MAHOGANY, BIRDSEYE MAPLE, FUMED OAK, EARLY ENGLISH, MISSION AND GOLDEN OAK AT GREAT REDUCTIONS



"OUTSIDE THE FIRE LIMITS, BUT INSIDE ON PRICES"

SOON TO REMOVE TO PERMANENT HOME, COR. CENTRAL AVE. AND 6TH ST.

TEMPORARY LOCATION

COR. MAIN AND LAUREL,

NEXT WASHINGTON SCHOOL

## CUBS WIN FIRST GAME; SCORE 4-3

(Continued from Page 1.)

The day dawned clear and cold. The selection of Cole was a popular one, as it was for him that the fans cried when the Cub pitchers were being slammed in the third battle. The Chicago fans were optimistic, but the town would have gone into the hands of a receiver following the Cubs' defeat the fourth time.

### First Inning.

Philadelphia—Strunk out, Steinfeld to Chance; Lord flied to Sheekard; Collins out, Chance to Cole. No runs. Chicago—Sheekard walked and stole second; Shulte fanned; Hoffman singled to left and Sheekard scored; Chance forced Hoffman and was himself out on Hoffman's interference. Davis getting the Chance out-of-run.

### Second Inning.

Philadelphia—Baker singled to right; Davis fanned; Murphy flied to Shulte; Baker was caught stealing, Archer to Tinker. No runs. Chicago—Zimmerman flied to Murphy; Steinfeld out, Baker to Davis; Thomas to Collins. No runs.

### Third Inning.

Philadelphia—Bary out, Steinfeld to Chance; Thomas out, Cole to Chance; Bender walked; Strunk doubled to center, scoring Bender, and in attempting to stretch it into a triple Strunk was thrown out; Sheekard to Steinfeld. One run. Chicago—Archer and Cole fanned; Thomas dropped Cole's third strike and threw him out. Thomas to Davis; Sheekard flied to Strunk. No runs.

### Fourth Inning.

Philadelphia—Lord fanned; Collins beat out an infield hit to Zimmerman; Baker hit to left center, reaching third. Collins crossing the plate, but the umpire's ground rule called it a double, sending Baker back to second and Collins to third; Davis fanned; Murphy doubled to left field crowd, scoring Collins and Baker; Barry fanned. Two runs. Chicago—Shulte singled to left; Hoffman singled to right; Shulte reaching third; Chance singled to left, scoring Shulte; crowd became frenzied; Zimmerman hit to Bender, who threw Zimmerman out to Baker, who doubled Zimmerman out to Davis; Steinfeld flied to Strunk. One run.

### Fifth Inning.

Philadelphia—Thomas out, Zimmerman to Chance; Bender singled to right; Strunk bunted safely; Lord to Sheekard; Sheekard, Collins flied to Sheekard. No runs. Chicago—Tinker fanned; Archer out, Baker to Davis; Cole fanned. No runs.

### Sixth Inning.

Philadelphia—Baker walked; Davis sacrificed; Cole to Chance; Steinfeld knocked down Murphy's single, but unable field it; Steinfeld flied to Sheekard, recovering in time to retire Baker at plate to Archer; Thomas singled to infield; Bender flied to Shulte. No runs. Chicago—Collins booted Shulte's grounder; Shulte safe; Shulte out stealing. Thomas to Collins; Sheekard out, Barry to Davis. No runs.

### Seventh Inning.

Philadelphia—Strunk fanned; Lord out, Zimmerman to Chance; Collins flied to Hoffman. No runs. Chicago—Chance out, Bender to Davis; Zimmerman singled to left; Steinfeld fanned; Zimmerman out stealing. Thomas to Collins. No runs.

### Eighth Inning.

Philadelphia—Baker hit safe to Chance; Davis walked; Murphy sacrificed; Chance to Zimmerman; Cole hit Bary, filling the bases; Thomas hit into a double play, Cole to Archer to Chance. No runs. Chicago—Tinker popped to Collins; Archer out, Collins to Dastig; King, batting for Cole, reached second on Baly's lead throw; Kane runs for King; Sheekard flied to Lord. No runs.

### Ninth Inning.

Philadelphia—Baker hit safe to Chance; Davis walked; Murphy sacrificed; Chance to Zimmerman; Cole hit Bary, filling the bases; Thomas hit into a double play, Cole to Archer to Chance. No runs. Chicago—Tinker popped to Collins; Archer out, Collins to Dastig; King, batting for Cole, reached second on Baly's lead throw; Kane runs for King; Sheekard flied to Lord. No runs.

## MUSICAL PROGRAM "NAT" ORCHESTRA

SUNDAY AFTERNOON—2:30 TO 4:30

- 1—March, "The Stars and Stripes" Sousa
  - 2—Valse Espagnole, "Mercedes" Galemberiti
  - 3—Overture, "Zampa" Herold
  - 4—Violin solo, "Notturmo" Chopin  
Louis N. Ritsau.
  - 5—Selection, "Maritana" Wallace
  - 6—Serio-comic fantasia, "A Trip to Coney Island" Tobani
- All Aboard—Italian Band—Jubilee Singers—All Ashore—Storm, Thunder, Lightning, Clouds are Breaking—Seidl's Orchestra—Imitation of Railroad, Arrival at Manhattan Beach—Gilmore's Band—Signal for Fireworks—Cannon Shots—Skyrockets—Home, Sweet Home.
- 7—Selection, "The Gipsy Baron" Strauss
  - 8—Popular medley, "A Picnic for Two" Von Tilzer
  - 9—Finale, "Ragged Thoughts" Von der Mehden

Philadelphia—Bender out, Steinfeld to Chance; Strunk safe, Archer colliding with Brown, when latter tried to catch Strunk's pop; Archer's error; Lord forced Strunk, Tinker to Zimmerman; Collins out, Brown to Chance. No runs. Chicago—Shulte doubled; Hoffman sacrificed, Davis, unassisted; Chance claimed been hit but Connolly called it foul; Chance tripped, scoring Shulte; Chance's triple went over Strunk's head; Zimmerman flied to Collins; Baker leaped into left field boxes, catching Steinfeld's foul. One run, score tied.

Tenth Inning. Philadelphia—Baker fouled to Archer; Davis doubled to right; Murphy forced Davis, Tinker to Steinfeld; Barry fanned; no runs. Chicago—Tinker flied to Barry; Archer doubled to left field bleachers; Brown out, Barry to Davis; Archer goes to third; Sheekard singled, scoring Archer. Chicago wins.

Final Score.  
Chicago R. H. E. 4 2 1  
Philadelphia 3 11 3

Bases on balls—Off Cole, 3; off Bender, 1. Struck out—By Cole, 5; by Bender, 5; by Brown, 1. Double plays—Bender to Baker to Davis; Cole to Archer to Chance. Batted runs—Philadelphia, 2; Chicago, 1. Hit by pitcher—Barry, by Cole. Umpires—Connolly, O'Day, Sheridan and Eglar. Time of game—Two hours and 10 minutes.

Pacific Coast League Finals.  
At San Francisco—  
Portland R. H. E. 2 4 2  
San Francisco 1 4 1  
Batteries—Gregg and Fisher; Eastley and Williams.  
At Los Angeles—  
Vernon 3 5 2  
Los Angeles 2 8 1  
Batteries—Carson and Brown; Tozer and Smith.  
At Sacramento—  
Oakland 3 5 1  
Sacramento 4 6 3  
Batteries—Willettts and Mitze; Arcllanes and La Longe.

PHILADELPHIA. AB. R. H. E. PO. A. E.  
Strunk, cf. 4 0 0 0 0 0  
Lord, 1b. 4 0 0 1 0 0  
Baker, 3b. 4 0 0 1 0 0  
Davis, lb. 3 0 0 10 0 0  
Jury, 2b. 4 0 0 1 0 0  
Barry, ss. 4 0 0 1 0 0  
Thomas, c. 4 0 0 5 4 0  
Brown, p. 3 1 0 0 0 0  
Totals 36 3 0 28 12 5  
\*Hoffman out, interfered with batted ball.

CHICAGO. AB. R. H. SB. PO. A. E.  
Sheekard, cf. 4 1 1 3 1 0  
Collins, 2b. 4 0 0 1 0 0  
Hoffman, cf. 3 0 0 1 0 0  
Chance, lb. 4 0 0 9 2 0  
Zimmerman, 2b. 4 0 0 2 0 0  
Steinfeld, 3b. 4 0 0 2 4 0  
Tinker, ss. 4 0 0 1 2 0  
Archer, c. 4 0 1 9 0 1  
Cole, p. 2 0 0 1 3 0  
\*Kling 1 0 0 0 0 0  
\*Kane 0 0 0 0 0 0  
Brown, p. 1 0 0 1 0 0  
Totals 35 4 1 29 15 1  
\*Kling batted for Cole in eighth.  
\*Kane ran for Kling.  
SCORE BY INNINGS.  
Philadelphia 0 0 1 2 2 0 0 0 0—3  
Chicago 0 1 0 1 0 0 0 1 1—4  
Base hits—10 Philadelphia, 13 Chicago.  
Base runs—3 Philadelphia, 2 Chicago.  
Sumsary.  
Three-base hit—Chance.  
Two-base hits—Strunk, Baker, Murphy (2), Shulte, Davis, Archer.  
Sacrifice hits—Davis, Hoffman.

## "NAT" ORCHESTRA MUSICAL PROGRAM

SUNDAY NIGHT — 7:30 TO 9:30

- 1—March, "Arabia" Buck
- 2—Valse Espagnole, "The Pearl of Iberia" Helmsberger
- 3—Overture, "Rakoczy" Kela-Bela
- 4—Idyll, "The Forge in the Forest" Michels
- 5—Grand opera selection, "Mignon" Thomas
- 6—Humoresque, on "La Sarella" Bellstedt
- 7—Selection, "The Burgomaster" Luders
- 8—Popular medley, "Bits of Remick's Hits" Lampe
- 9—Finale, "Slavery Days" Lita

Piano and Furniture Polishing. House and Sign Painters. All work guaranteed to be first class  
**Booth, Dassonville and Buell**  
EXPERT AUTO AND CARRIAGE PAINTERS  
Phone Main 3201  
North Ivy, off Main Street Medford, Oregon

## Triangle 5 Ply Collars

A better collar never was shown in the city of Medford. Every man who buys these collars comes back for more. The reason is they are the only five-ply collars on the market and that they wear so much longer than anything to be found at anything near the price. Just come and try these collars—we'll guarantee that you will always use them.

## New Neckwear

New lines of fine neckwear, mufflers, silk scarfs, etc. If you want neckwear of quality, neckwear that shows style and durability and a combination of the very newest styles, we would like to have you call here and see our line. The assortments are complete and you can buy just as many as you desire.

25c to \$1.00

## The Wardrobe THE HOME OF GOOD SHOES

## Medford Theatre Wednesday, Oct. 26th

MESSRS SHUBERT PRESENT  
**CLYDE FITCH'S POWERFUL DRAMA**  
AS PLAYED FOR ONE YEAR AT THE LYRIC THEATRE, NEW YORK  
**THE CITY**

THE SENSATION OF THE PAST NEW YORK SEASON  
A DRAMA THAT GRIPS AND THRILLS YOU  
Seats on sale Monday, October 24th.