

## CITY TO VOTE ON A LIBRARY TAX

City Dads Order Amendment to Charter Providing Tax for Maintenance of Library Submitted to the People at Special Election.

The city council held a brief business session Friday afternoon and ordered submitted to the people of the city for their election or rejection a charter amendment providing for the levying of a tax which will provide a maintenance sum fund for a free public library equivalent to 10 per cent of the cost of the construction of a building erected by any person or persons. The council took the step at the instance of the ladies of the Greater Medford club, who have been working for some time to secure a Carnegie library. This has been delayed until such time as the 1910 census of the city can be learned.

At a previous city election a tax was voted by the citizens of a half mill. But this will amount to more than necessary if the city grows to any considerable extent. So a new election has been ordered. It will probably be carried.

## "FLYING DUTCHMAN" IS QUIESCENT NOW

Since Jacob Hartman, otherwise the "Flying Dutchman," has been in the county jail he has been happier than he has been for months. He lectures the other prisoners on socialism and always has an audience—because they can't get out of hearing, and enjoys himself exceedingly in strictures on everything that pertains to government.

## FLOODS ENDANGER BISBEE, ARIZONA

EL PASO, Tex., July 16.—Meagre reports from Bisbee, Ariz., this morning say the damage from the heavy rains that caused a flood to sweep down on the town is slight. Bisbee is situated in a canyon. Unusually heavy rains converted the streets into veritable rivers.

Practically all wire communication has been cut off and only brief messages have been received today.

## BIG TRACT TO BE PLANTED FRUIT

Ashland Men Combine With F. W. Streets of Woodville and Will Plant Nearly 1000 Acres of Orchard on Evans Creek.

A number of Ashland men and F. W. Streets of Woodville have formed a large orchard company and will plant Mr. Streets' large tract near Woodville to orchard. Later they will subdivide and sell. The concern will be one of the largest of its kind in the valley.

Mr. Streets owns nearly 1000 acres of land near Woodville, which comprises some of the very best of soil adapted to fruit. The company should fare well in its venture. E. P. Hughes is one of the Ashland men interested.

## NATATORIUM PROVING MOST POPULAR SPOT

The most popular place in Medford these days is the natatorium. At every session since the opening Thursday the plunge has been crowded to its utmost capacity. Saturday afternoon between the hours of 2 and 5 more than 250 suits were issued.

The directors are very fortunate in the management they have engaged. Charley Hazelrigg is "busy as a cranberry merchant" as general manager, seeing that every attention is shown the patrons. Mr. Broaz, the swimming instructor, for three years a guard at Coney Island, has already proved his worth, and the ladies in the box office are politeness itself.

Monday afternoon from 2 to 4 the plunge will be reserved for ladies exclusively and Mr. Broaz will assist any who desire it. Next week the plunge will be open daily from 10 a. m. with dancing Wednesday and Saturday evenings.

E. V. Carter of Ashland was in Medford Saturday attending the meeting of the county central committee.

## RAIN RUINS CROP IN MIDDLE WEST

Large Prices for Pacific Coast Fruit Seems Assured—Wheat and Corn Crops in Indiana Suffer Great Damage.

TERRE HAUTE, Ind., July 16.—Eighteen hours' rain has nearly ruined the larger part of the fruit crop in this section and has destroyed all wheat and corn. All fruit with the exception of a few late varieties will have to be shipped in from the Pacific coast fruit centers. The storm was general.

## SOCIALIST ORATOR IS BARRED FROM CANADA

BOURNEMOUTH, England, July 16.—Allan Boyle, son of the earl of Glasgow, fell from an aeroplane this afternoon and received concussions of the brain. It is feared he will die. The aviator was in a monoplane which suddenly collapsed, precipitating him to the ground.

## Too Late to Classify

FOR SALE—Do you want a fine farm of 60 acres near Anderson Co., Talent, Oregon, fertile soil, healthy location, among the hills, 20 acres under cultivation, a seven-room house, outbuildings, etc., etc., a well of pure, sparkling water, several living springs of water on the place, a fine bearing family orchard of three acres, early and late apples, also peaches, pears, plums, prunes, cherries and some small, lovely view from it of the valley? Will make somebody an ideal home. Seven thousand dollars (that is only a trifle over \$116) one hundred and sixteen dollars an acre. Take your wife and come on the cars to Talent and I will take a rig and go out and show you the place. L. N. Judd, Robert building, near depot, 102

WANTED—A young lady to do stenographic work. Address Box 75, care of this office. 101\*

FOR SALE—Some first-class wheat and oat hay, in bundles. Robt. Dutton, R. F. D. No. 1. 102

## TO RUSH WORK PAVING STREETS

Superintendent Clark of Construction Company Telegraphs for More Equipment—Will Have Most of Job Done This Season.

Superintendent Clark of the Clark-Henry Construction company, which is paving the streets of the city, has telegraphed for a second concrete mixer, as the men who are laying the top dressing on the concrete base are catching up with the crew laying the concrete. With a second mixer in operation the work will progress more rapidly than at present. While Mr.

Clark doubts that the company will be able to complete their contract in this city this season, he believes that the greater portion of it will be concluded before rain puts an end to the work. Not a thing has been overlooked which will tend to check progress, the company even shipping in 12,000 barrels of cement which is being held as a reserve supply in case shipping facilities are delayed at any time.

The company will complete the paving of East Main to Roosevelt avenue on Monday evening and will then come back on the West Side.

## Married.

MC CONOCHIE - STALLSWORTH—In Medford, July 14, 1910, by J. R. Neil, county judge, R. R. McConochie and Lizzie Stallsworth.

Dr. E. R. Seely has returned from a visit in New York, where he has been taking an advanced course in surgery.

## SPECIAL WEEK Isis Theatre

The Home of Vaudeville

A treat to theatergoers of Medford—One of the biggest attractions in vaudeville—THE NELLARS—in their concentration magic mind reading—Madame Nellar's mind reading is a positive revelation—A laugh until your side aches.

## Boid and Allen

in the latest songs and dancing specialty—something Unusual.

THREE REELS—THREE

SERGEON VISIT TO BERLIN

PADRE'S SECRET

WAY OUT WEST

Illustrated song, "Roses Bring Dreams of You." This is a special attraction. Prices are 15c, 35c. Money back if not satisfied.

## BIJOU THEATRE TONIGHT

## ANGLE CITY TRIO

Bloch Burn, Geo. Stedman, Robt. Jordan

Direct From the Pantages Circuit

High class comedians, vaudeville acts, with singing and playing, together with unexcelled motion pictures.

DYNAMITE—Great comedy.

DEVOTED PLAYMATES—Medley drama.

A NEW BURGLAR—Comedy.

SOUTHERN SWEDEN—Great comedy.

Song, "Oh, You Loving Girl."

## DROP IN AT RARDONS For Refreshments

Strawberry  
Banana  
Raspberry  
Vanilla  
Moca  
Chocolate  
Bisque  
Maple Nut

ICE  
CREAM

Pineapple  
Loganberry

SHERBET

Try a brick of Rardon's Fancy Combination Cream for Sunday Dinner.



The Appolo

## Are You Thinking of Purchasing a PIANO?

If you are contemplating the purchase of a piano you should seek the highest standard of excellence in construction, tone quality and durability. These essentials, ever present in the Ivers & Pond, Laffargue or Sterling pianos, should be carefully considered by all prospective piano buyers. CHICKERING BROS.' DURABILITY is an established fact everywhere. You may select a piano which is pleasing to the eye and ear at the time of purchasing, the life of which may prove afterward to have been all too short. The cases are symmetrically designed and beautifully plain, showing only the best veneers obtainable. Our prices are right. Our terms are reasonable. Arrange for a short visit to our warerooms, corner 10th and Oakdale avenue, where we will be pleased to show

you the best grades of pianos whether you care to purchase or not.



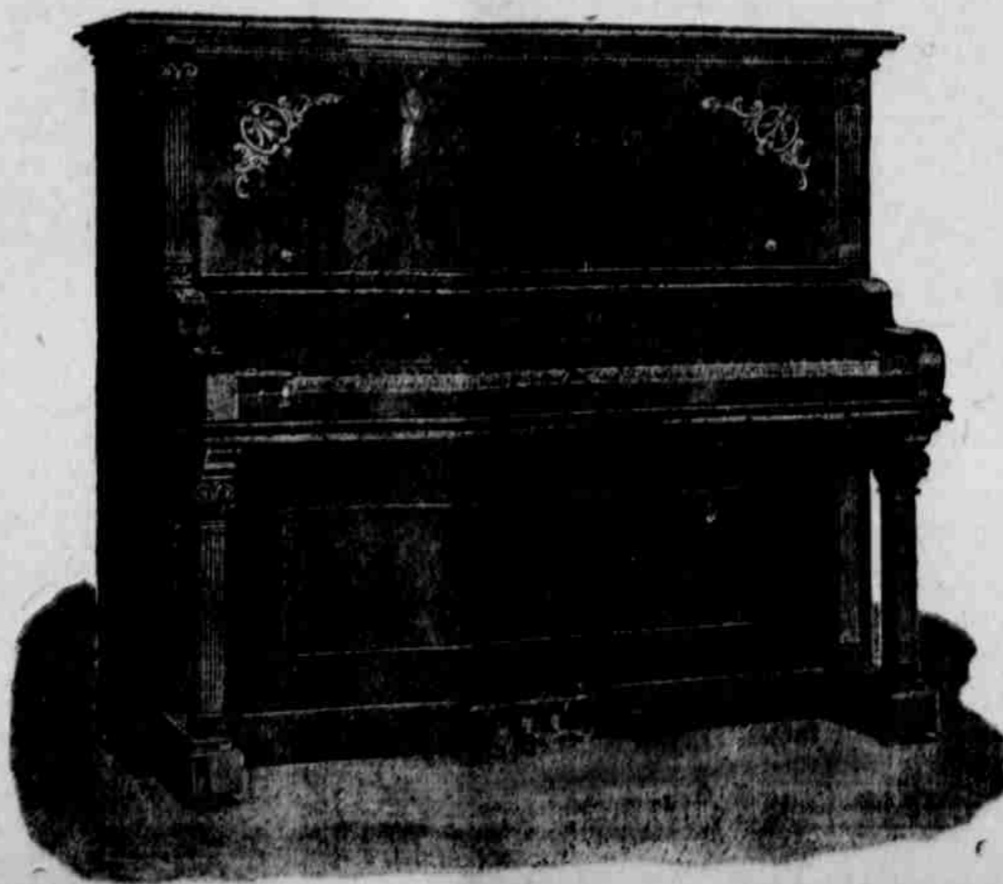
The Appolo

## HALE'S PIANO HOUSE Wholesale Warehouse Corner 10 and Oakdale Ave.

## Remember we are the only Factory to Home Distributors

in southern Oregon, and our prices are fully \$100 less on each piano of the same grades as sold by other dealers.

The appreciation of the people of Medford and vicinity is shown in the fact that we have sold 27 pianos in a little over two weeks. Out of 45 pianos shipped in in the last three weeks we only have 18 left in our warehouse.



## Easy Payment Plan \$10.00 Down and \$6.00 per Month

A small payment down puts a fine piano in your home, and only a few cents a day keeps it there.

## All Tuning Guaranteed

We have in connection a first-class piano tuner, who will be pleased to call and do your work. All work guaranteed by us.