

### NEW BASIS FOR MONEY TO END PRICE CHANGES

Increased Production of Gold Is Blamed by Professor Norton for the Present Conditions.

NEW HAVEN, Conn., Feb. 16.—Increased production of gold is the principal cause of high prices, according to J. Pease Norton, professor of political economy at Yale university. In an article in this week's Independent, Professor Norton says: "When mining engineers and chemists succeeded in devising methods of extracting gold from ore as low in grade as \$5 per ton at a profit, the potential supply of gold enormously increased. As a result of these scientific discoveries, the annual production of gold began to mount at an increasing rate in the '90s."

"Bradstreet's index of average prices indicates an advance of 60 per cent in prices since July 1, 1896. In other words, a dollar's worth of goods today could have been purchased for 62 cents in 1896. During the past 13 years prices have maintained an average advance of 4 1/2 per cent per annum.

"The gold inflation is world-wide and prices everywhere have moved upward in response. In the United States the rise in prices has been intensified by three causes, which probably are, in order of importance, the banknote laws, the storage and cold storage development and the tariff.

"At the present time popular clamor seeks to fix the responsibility upon the trusts, just as in Washington's day a similar agitation resulted in laws against 'forestallers and monopolists,' whereas the true cause lay in the depreciating continental currency. 'Not worth a continental' in the future may be substituted by the phrase, 'Not worth a gold dollar,' for how serious the situation may become nobody knows."

Professor Norton proposes as a remedy the adoption of a new standard to supplant the gold dollar. He calls it the "Dill," which would be an imaginary unit or basis of exchange whose value would be equal to the purchasing power of one gold dollar of specific quantities of staple commodities as designated in Federal law. The plan would include also a central bank, which would issue on demand to banks and to a system of licensed storehouses "Dill" credit notes to the extent of 10 per cent of the value of gold, silver or commodities on hand.

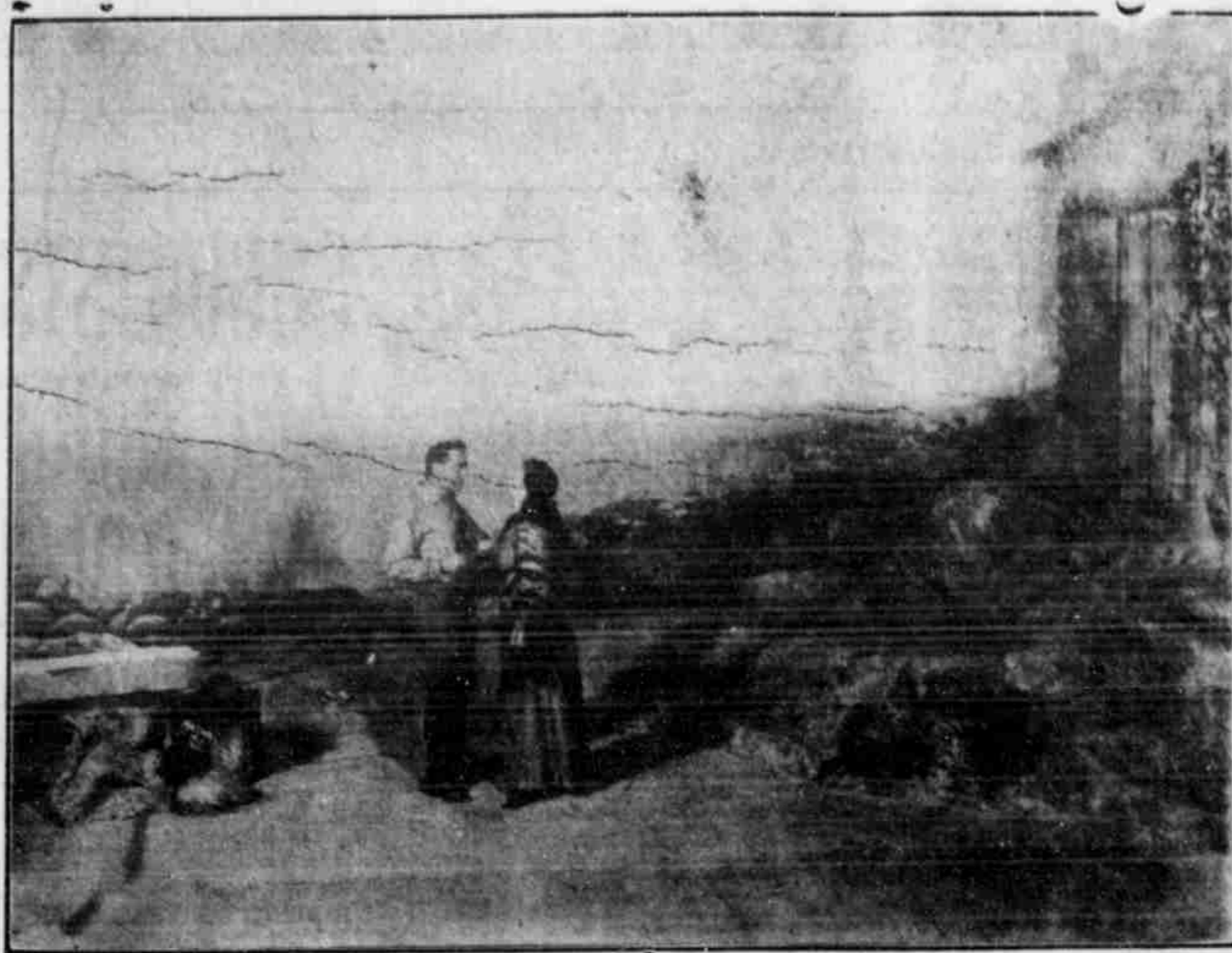
#### REAL ESTATE TRANSFERS.

- O. L. Sargent to George O. Wolgamot, lot 8, block 4, Narreagan addition to Medford 10
- F. A. Daulton to Theo. Wolgamot, 20 acres section 25, township 38, range 1 W 385
- D. L. McNary to Oscar Talent, part lot 3, block 3, West Medford 275
- Louis Oliver to George N. Wolf, 20 acres D L C 57, township 37, range 2 W... 10
- Francis L. Aiken to S. S. Aiken, land in section 29, township 32, range 3 E... 1
- G. W. Milan to Stacy E. Wright, lot 32 and part lot 33, Montview addition to Ashland 10
- W. J. Albert to Agnes Head, lots 3 and 4, block 34, Central Point 350
- Mary A. Scott to John W. Chandler, 160 acres in section 27, township 35, range 4 W 10

#### MEDFORD TIME TABLE.

Northbound	
No. 20 Portland Local...	8:04 a. m.
No. 16 Oregon Express...	5:24 p. m.
No. 14 Portland Express...	8:39 p. m.
Southbound	
No. 15 California Express	10:35 a. m.
No. 13 S. F. Express...	3:32 p. m.
No. 19 Ashland Local...	11:22 p. m.
Medford to Jacksonville.	
Motor car leaves	8:00 a. m.
Train leaves	10:45 a. m.
Train leaves	3:35 p. m.
Train leaves	6:00 p. m.
Motor car leaves	9:30 p. m.
Jacksonville to Medford.	
Motor leaves	7:00 a. m.
Train leaves	8:45 a. m.
Train leaves	2:30 p. m.
Train leaves	4:30 p. m.
Motor car leaves	7:30 p. m.
PACIFIC & EASTERN RAILWAY.	
N. 1 Leaves Medford	8:10 a. m.
No. 3 Leaves Medford	3:00 p. m.
No. 2 Arrives Medford	10:10 a. m.
No. 4 Arrives Medford	5:00 p. m.
No. 1 Arrives Eagle Point	8:45 a. m.
No. 2 Leaves Eagle Point	9:05 a. m.
No. 3 Arrives Eagle Point	3:45 p. m.
No. 4 Leaves Eagle Point	4:00 p. m.

### THE GREAT DIVIDE HERE THURSDAY



#### ALL ABOARD FOR GARDEN OF EDEN!

Such Will Be Announcer's Cry When New Railroad in Turkey Is Completed.

CONSTANTINOPLE, Feb. 26.—All aboard for Eden. Step 'his way, ladies and gentlemen, for the Adam and Eve First Century Limited. All aboard!

Such will be the announcer's cry, doubtless, when the station of the proposed C. & G. E. railroad is built here—the Constantinople and Garden of Eden road.

Sir William Willcocks, British adviser to the Turkish ministry of public works, recommends that the road be built. It is not impossible that the old original garden will become a popular riverside resort, with a rib-roast restaurant, a snake-house, an apple orchard and a permanent exhibition of female habiliments showing their slow evolution and development up and down from fig leaves to the costume of the modern Salome dancer.

Sir William Willcocks, engineer and geographer, has located Adam and Eve's old estate and ladies' and gents' tailoring establishments in the Harilah district, about 155 miles from Bagdad. This spot, from which the occupants were dispossessed after razing Cain, is an oasis in a vast desolate plain, traversed by four arms of the river Euphrates. These streams lend themselves readily to "shoot the chutes" entertainment, and the fact that the Euphrates has four arms strongly recommends the proposed resort to the numerous Mrs. Ishmaels, wives of Mr. Ismael Pasha, and to other ladies.

The sultan and his ministry of public works are receiving bids and proposals for the construction and equipment of the new railroad.

#### Probate.

- Estate Mary A. Young; annual report of executor approved.
- Estate J. W. Clark; Monday, March 14, set as day of final accounting.
- Estate M. S. Welch; order confirming sale of real property.
- Estate Martha J. Minnick; Sterling C. Minnick appointed administrator; W. J. Freeman, T. J. O'Hara and F. A. Harr appointed appraisers.

#### NOTICE.

All members of Pocahontas Council, No. 20, be on hand Friday evening, February 18, 1910. Special business and refreshments.

ELLA SHOULTS, Keeper of Records.

NORMA MARTIN, Pocahontas.

R. A. Holmes, the insurance man.

#### PORTLAND HARDWOOD FLOOR COMPANY

Largest stock of Oak, Maple, Beech, Birch, Mahogany and Walnut FLOORING

In the Pacific northwest. Manufacturers of Parquet Flooring. We have a large force of Expert Mechanics and are in a position to give estimates of finished floor work. We also use a sanding and scraping machine for surfacing dance halls and skating rink floors. We sell wax, wax brushes, furniture rests and glass sliding shoes. Write or call at 286 YAMHILL ST., PORTLAND.

#### MAY OSTRACISE ALICE'S PET SIMIAN

Her Pet Monkey Is No Longer Persona Grata in Washington Society.

WASHINGTON, Feb. 16.—Mrs. Alice Roosevelt Longworth's pet monkey is in danger of being ostracised in social Washington today, following his disgraceful conduct at the dinner Representative and Mrs. Longworth gave in honor of Mrs. Cornelius Vanderbilt.

During the dinner last evening Mrs. Longworth recounted some of the intelligent doings of the little ape, and the guests demanded to see him. His cage was brought to the room, but by mishap the door flew open and the simian, with one bound landed on the center of the table.

After a preliminary canter over the damask, the monk seized a fistful of edibles and leaped to a chandelier, where he squatted and munched contentedly until recaptured, making faces and grinning at the guests.

Singer and Wheeler & Wilson sewing machines for sale and rent. Supplies and repairs for all kinds. Address 244 S. Grape.

#### CITY WOOD PILE NOW POPULAR

Man Takes Two-Hour Shift and Jumps the Job—Two Others Pay Their Fines.

Three violators of the ordinances made and provided that no disorderly conduct shall occur, were arraigned before Mayor Canon Tuesday. James Hogan was assessed \$10 for being disorderly, which he paid.

Henry Johnson, just plain drunk, paid his fine of \$5, whereas the judge nearly fell off the bench, as he was figuring on putting him on the woodpile.

George McCarty had neither money nor friends, so was given two days on the woodpile. Two hours sufficed on George, who jumped the job and made his escape to other scenes.

NOTICE TO HOOSIERS. The Hoosier society of the Rogue River valley invite all Hoosiers to attend their meeting at the Medford opera house on February 22 at 7:30 p. m.

E. E. WILSON, Secretary.

#### For the Best

in harness, saddles, whips, robes, tents, blankets, wagon sheets, axle grease and gall cure, as well as all kinds of custom work, see

J. C. Smith

314 E. Main.

#### Wanted Second Hand Oak Barrels

J. A. Perry

**A CHAFING DISH PARTY**

Another pleasure that comes to the home lighted by Electricity is the use of an Electric chafing dish. As a means of amusement, the chafing dish has more delights stored away for its possessor than almost any other article in the home. Moreover, it is useful. A dainty luncheon or after the theatre party, in fact most of the informal affairs at home are enhanced by its use. It can be attached to any electric light socket.

**ROGUE RIVER ELECTRIC CO.**

#### LEW POWELL GETS BEST OF MEMSIC

Memsic Shows by His Gritty Work That He Is Fast Getting Into His Old Form.

LOS ANGELES, Cal., Feb. 16.—By virtue of a two to one newspaper decision, Lew Powell of San Francisco is being hailed today as the conqueror of George Memsic. Two morning papers declared Powell the winner, while the third gave the palm to Memsic, following their ten-round engagement at Naud Junction last night.

Notwithstanding his defeat, Memsic showed by his gritty work that he is getting back to his old-time form, and his backers, far from being discouraged, express the opinion that the little scrapper will yet reach the top of the pile.

Powell won on points only. Memsic showed that he was the superior when it came to infighting and aggressiveness. It was a splendid exhibition and the fight fans are anxious to see the boys come together again.

It is probable that Lew will remain here for several days until he recovers from a decorated optic. It is understood he will challenge the winner of the Wolgast-Nelson argument at San Francisco Washington's birthday.

**Order Olympic Flour—it makes good bread and biscuits.**

Absolutely clean and pure, wholesome and nutritious—made from selected Northwestern wheat—Insist upon Olympic.

**AT YOUR GROCER'S**

#### REAL ESTATE SNAPS

30 acres fruit land, 20 planted to pears, with peach fillers, close to school and postoffice, \$8500, one-third, balance long time; no improvements.

162 acres, 7 miles from Medford, \$125 an acre; good irrigation ditch; one-third down, balance long as wanted.

Good city lots, close in. Money to loan.

1/2 east front lots, 50x108, half off of street to be paved this block \$90 each, close in, half down, year, \$1000 year 8 per cent.

**Siskiyou Land Co**

206 Phipps Bldg., Medford, Or.

**Now is the Time**

TO GET OUR FIGURES ON WIRING, ELECTRICAL FIXTURES, ETC., ON THAT NEW HOUSE. DYNAMO REPAIRING A SPECIALTY.

**FLYNN BROS.**

122 MAIN STREET

# BOOM IN BUICKS

## Five Sold in Two Days

Everybody wants one—the best cars in the valley for the money. See the various sizes now on exhibit at Hodson's Garage.

MODELS 16 AND 17

MODEL 16, \$1900 F. O. B. PORTLAND.

This car may have equals for power, performance and speed, but if so they will cost at least \$1000 more than the Buick.

### THE FAMOUS WHITE STREAK

In Rumble, Surrey and Toy Tonneau.

\$1100 F. O. B. PORTLAND.

The trimmest, staunchest small Touring Car on market.

# Medford Buick Co.

Tou Velle, Manager

Hodson's Garage, Medford

# CALIFORNIA

THE MECCA FOR WINTER TOURISTS

Its attractive seaside resorts, famous medical springs, magnificent tourist hotels, picturesque scenery, delightful climate, and opportunity for all kinds of outdoor pastime, such as hundreds of miles of beach boulevards, make this favored region The World's Greatest Winter Resort, reached via the

## SHASTA ROUTE

Low round trip rates are in effect from all points in the North.

Medford to Los Angeles and Return, \$7.50.

With a final return limit of six months, and stop-overs in either direction, car service, and everything that goes to make the trip pleasant.

Attractive, interesting and instructive literature calling of the famous winter resorts of California can be had on application to any O. R. & N. or S. P. Agent, or by writing to

**W. M. McMURRAY, General Passenger Agent,** PORTLAND, OREGON