

SOCIAL AND PERSONAL

See the Merrivold Shop for books, magazines and fine engraving.
 Miss C. L. Rossan left Sunday for a month's visit at Portland.
 You have the garden, we have the garden tools. Medford Hardware Co. 277
 L. P. O'Neil and G. B. Johnson of Gold Ray spent Saturday night and Sunday in Medford.
 C-B corsets. Meeker & Co. 276
 You have the garden, we have the garden tools. Medford Hardware Co. 277
 S. S. Wilson, who is employed at the Ray dam, spent Sunday with his family in Medford.
 Dr. J. F. Reddy was at Gold Hill on business Monday.
 J. M. Potter was in Medford from Ashland Monday on a short business trip.
 Stationery, office and school supplies at the Merrivold Shop.
 John X. Miller, one of the '52 pioneers left, was in this city from his homestead at Trail Monday. John X. has been under the weather for a few weeks, but in spite of the fact that he has passed the three-score and ten mark, his constitution is good yet and he expects to be on earth for many years. He, by the way, was one of the original owners of the Gold Hill pocket, which produced over \$100,000, which was actually received by the owners, and as much more that was stolen by hangers-on.
 Spring skirts. Meeker's.
 R. O. Whitley of Central Point was in Medford Sunday.
 Wear Kidd's Shoes.
 J. A. Bothwell, who has been at Los Angeles and other California points for the past several months, returned to Medford Sunday. Mr. Bothwell was accompanied by D. T. Mitchem of Los Angeles, who comes with the intention of making investments if he can find something to suit him.
 Buy a Lorain range and get the best. For sale by Medford Hardware Co. 277
 Karl P. Nims of Ashland was a Medford visitor Sunday.
 Rex enamel ware, low in price, but high in quality. For sale by Medford Hardware Co. 277
 A. B. Coll and C. A. Spesher of Astoria, N. M., are among the people who have been attracted to the Rogue River valley lately. They are examining the various resources with a view to locating.

E. T. Staples of Ashland was in Medford Monday on business.
 D. H. Griswold and family of Gordon, Neb., are registered at the Nash. Several stands of Italian bees for sale. Inquire "M." care of Mail Tribune office.
 Fred Luy was in Medford from the Antelope ranch Monday on business.
 Horace Pelton of Sam's Valley was in Medford on business Monday.
 G. A. Hoyer was in Medford Monday from his fruit farm near Phoenix.
 Ladies' waists at special reductions. Meeker's. 276
 A. F. Stennett of the Mail Tribune visited relatives and friends at Ashland Sunday.
 Mr. and Mrs. William Henderson of Hillsboro, who have been spending the winter in Southern California, stopped off Sunday on their way home to visit a few days with J. H. Bellinger and family and other friends.
 White goods at Meeker's. 276
 Men's shirts for less at Meeker's. 276
 Deputy United States Marshal J. H. Bellinger was at Ashland Saturday evening to serve a subpoena on W. W. Taylor, who was wanted as a witness in the United States court at Juneau, Alaska. He was fortunate in finding his man and serving the papers, and Taylor started on the 1200-mile journey Sunday morning. The case is one in which two women fought and one stabbed the other with a hatpin. Taylor happened to be a witness to the occurrence, but when he left Juneau in September last thought the matter had been settled and passed over. Just for what reason he has been called back he doesn't know, unless it is that the injured woman has died.
 Anything you can buy anywhere for less at Meeker's. 276
 Mrs. L. E. Whiting will leave tomorrow for Portland on a visit to relatives and friends in that city. Mrs. Whiting will be absent about a month.
 Mr. and Mrs. G. Whiteher of Spokane, Wash., are in Medford for a few days.
 George W. Morris of Marietta, O., is in this city looking over the opportunities afforded for investment.
 H. E. Weeks of Santa Paula, Cal., is registered at the Moore.
 Eric Anderson of the Blue Ledge is in Medford on a short business trip.
 Just received a complete line of enamel ware and kitchen furnishings. Compare our prices. Medford Hardware Co. 277

BUSINESS LOCALS

Wear Kidd's Shoes.
 Rex enamel ware, low in price, but high in quality. For sale by Medford Hardware Co. 277
 Fall assortment of Whitman's candies at The Merrivold Shop.
 You have the garden, we have the garden tools. Medford Hardware Co. 277
 Linens on sal eat Meeker & Co.'s. *
 For wood of all kinds, see the Square Deal Woodyard. Phone 2901. Fir street, between Second and Third streets. Gould & Linsley, proprietors. 261*
 To see one is to have one. Let us show you the Lorain range. Medford Hardware Co. 277
 1910, the banner year. Watch Medford's population double and lots in the Queen Anne addition triple in value. Present price \$500 and upward. Cash or terms.
 People that want figuring on planting shade trees and have not got their orders booked better consult H. B. Patterson, the Quaker Nurseryman and get low prices. Office in Hotel Nash Office.
 To see one is to have one. Let us show you the Lorain range. Medford Hardware Co. 277
 A \$100 cash prize given on Singer or Wheeler & Wilson sewing machines to the one having the lucky number on the first twenty cash sales after February 1, 1910. Machines sold by easy payments, rented and repaired. Needles and oil for all makes. Good single driving horse and harness wanted at once. Cave Duncan, 125 S. Oakdale, Medford, Or. Phone 1342. 279
 To see one is to have one. Let us show you the Lorain range. Medford Hardware Co. 277
 Wear Kidd's Shoes.
 McCall patterns. Meeker.
 Halibut, herring, smelt, salmon, catfish, crabs, shrimp, fresh shipment Holland herring, tongue and sounds, salmon bellies and many other things good to eat. R. R. Fish Market. 277*
Notice.
 On account of not being able to get Smith's hall on Thursday eve., February 10, the Illinois club has been postponed to Friday eve, February 11, and all Illinoisans are invited to attend.

More 1910

Chalmers-Detroits

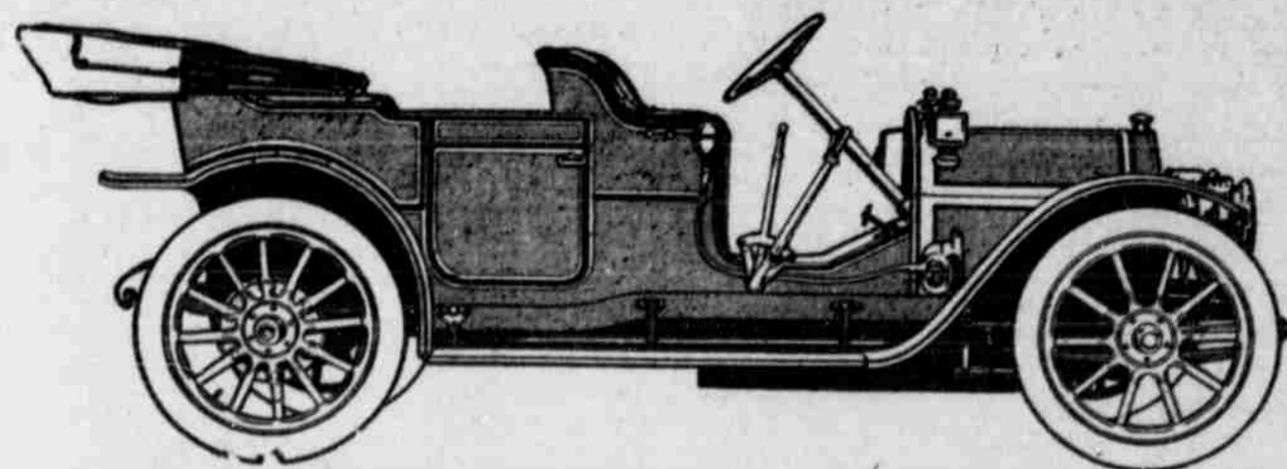
in the hands of private owners in Portland than all the rest of the cars in its class combined.

\$1500 F. O. B. Factory There's a Reason

Most Popular Car
CHALMERS-DETROIT WINS

Of 64,060 votes cast for the most popular car at the Portland Auto Show, January 24-29, the Chalmers-Detroit received 34,220 votes, winning the western motor cup by 19,930 over the nearest competitor, and 2984 more than all the rest combined from an exhibit of 102 cars.

There is abundant evidence of the popularity of the Chalmers-Detroit throughout the entire northwest, for votes were cast for the Chalmers by people from every direction, even some admirers from far-away Nome and British Columbia.



\$1930 F. O. B. Medford

Every Chalmers-Detroit arriving in Medford is a booster for our car. Ask the man who owns one.

We haven't a great many more Chalmers-Detroit cars to deliver, as our allotment has dwindled considerably since the show.

VALLEY AUTO Co.

Valentines
1c to \$1.50
- each -

We are showing the neatest line of fancy Valentines to be seen in the city. Over 500 styles to select from and nearly 10,000 Valentine Post Cards to choose from at 1 cent each.

LADIES' CASHMERE HOSE

25c quality, 5 pairs for \$1
 35c quality, pair 25c
 50c quality, pair 35c
 10 dozen ladies' heavy fleece lined, ribbed garter top, fast black Hose, sale price

3 pair for 50c

SCHOOL HOSE.

20 dozen good heavy seamless, fast black, ribbed Hose, a regular 15c quality, suitable for either boys or girls, here tomorrow in sizes 6-1-2 to 9-1-2, 10 dozen boys heavy cotton Hose; our regular 25c quality; sale price

3 pair for 50c

25 per ct. Discount

on our line of ladies' silk, cashmere and Jersey Gloves, in fact one-quarter off this week on our entire line of ladies' fabric Gloves.

Men's \$1.50, \$1.75 and \$2
Gloves Sale Price \$1.25 PAIR

\$17.50
 for an 82-piece Dinner Set plain white with wide gold band decoration. See east window.

HUSSEY'S

Medford's Opportunity in the ROGUE RIVER VALLEY

See What

"Tract X"
of 12 acres will do

It contains 770 Trees, Only 306 Are in Bearing.

Price \$13,150
1st. Payment \$2,285

According to Past Records Will Net in 1910 \$6154.40, or

87 per ct. Actual Profit
 in Excess of First Payment.

THE EXTRAORDINARY VALUE OF SNOWYBUTTE ORCHARD

in the Rogue River Valley now on sale in 10-acre tracts is emphasized by the fact that

It is being quickly taken up by Expert Orchardists

Who are already operating orchards of their own in this district. You should enjoy the advantages of some of this property. There are only 25 of these tracts. The first cash payment is the actual cost of a 10-acre bearing tract. The **SNOWY BUTTE ORCHARDS** in bearing pay a net profit of 30 to 50 per cent yearly. This will afford sufficient income to take care of the subsequent payments, as well as all running expenses.

This does not take into consideration the enhancing values of the orchard, caused by the limited supply and great demand for planted orchards in the Rogue River Valley, nor the increasing value by reason of additional trees coming into bearing each year. 1910 is already witnessing enormous advances in the price of Rogue River Valley lands.

CALL OR WRITE FOR PRICE LIST WITH DETAIL OF EVERY TREE ON EVERY TRACT.

Medford Land & Orchard Co.

MEDFORD OFFICE, 9 NORTH FRONT STREET.