

THREE KILLED; 11 INJURED IN WRECK

Southern Pacific Passenger Train Crashes Into Freight in Utah—Hospital Train Sent to Scene.

SALT LAKE CITY, Utah, Jan. 17.—Three persons were killed and at least eleven seriously injured when a Southern Pacific passenger train collided with a freight train at Lemay siding, west of the Lucine cut-off, at 3 o'clock this morning.

The dead are:
JAMES REARDON, freight engineer.

R. A. KROLL, brakeman.

JAMES, student fireman.

The severely injured are:

Engineer A. S. Hurley, both legs broken; condition critical.

Fireman Brydenbecker, leg broken.

Fireman Hartwell, head and legs badly injured.

John W. Maylor, mail clerk.

James B. Cardwell, mail clerk.

Guy R. Prentiss, mail clerk.

Eugene Ransom, mail clerk.

Claude E. Saxe, mail clerk.

Edward A. Hart, mail clerk.

It was reported also that several passengers were severely hurt. A relief train was dispatched from Ogden to the scene of the wreck. It carried physicians, nurses and hospital supplies.

The wrecked train was passenger No. 6, westbound.

CITY PUTS IN WALK—NOT BEFORE IT'S NEEDED

The crossing of Oak street, near the North school, has not been a thing of beauty, neither has it been much of a joy to the pupils of the school, except those of a size continually experimenting as to how deep they can wade without getting over "shoe top" deep. To these it was eminently satisfactory.

However, the joy of the urchin has been taken away, for the city fathers have ordered a crossing built, so that a detour of several blocks to avoid the mud is eliminated and the small boy can no longer plead the excuse of "taking a short cut" in explanation of his muddy lower extremities. That crossing wasn't put in a minute before it was needed.

LOOKS LIKE TWO FAIRS IN 1915

Committee Meeting in Los Angeles Results in Deadlock—Neither Side Will Concede a Point.

LOS ANGELES, Cal., Jan. 17.—According to the present indications the completion of the Panama canal in 1915 will be celebrated by two expositions on the Pacific coast. One of them apparently will be held at San Diego and the other will be in San Francisco.

A second meeting between delegations from San Francisco and San Diego in an attempt to settle on one city or the other as the location for the proposed fair resulted in a deadlock, neither side conceding a point.

TEDDY REFUSES TO TALK OF PINCHOT

Flatly Refuses to Discuss Dismissal of Chief Forester by President Taft.

BUTIABA, Uganda, B. E. A., Jan. 17.—Wor drenched from Colonel Roosevelt's party at Camp Rhine today says that the Colonel refused to comment upon the dismissal of Gifford Pinchot as chief forester by President Taft other than to express surprise. He flatly refused to talk upon the subject.

The party will probably spend a week hunting white rhinoceros, two specimens of which the colonel already has killed.

Blows Out His Brains.

TACOMA, Wash., Jan. 17.—Evidently because he was unable to pay his room rent, which was due today, Fred Blum, a dishwasher, aged about 55, blew out his brains with a revolver at the Berkeley hotel between 6 and 7 o'clock this morning.

W. B. Denam of Williams Creek was a recent Medford visitor.

THREE DIE OF GAS IN GREAT TUNNEL

Thirty-three Men Narrowly Escape Terrible Death From Inhaling Poisonous Nitro Fumes.

MONROSE, Cal., Jan. 17.—Three workmen are dead today from the effects of nitro fumes that filled the Gunnison tunnel, endangering the lives of 33 men who were working there.

The men were blasting two miles from the river Portal late yesterday when air currents, reversed by a heavy blast, sent the poisonous fumes upon them.

Many of the survivors are in a precarious condition today, and are under the care of physicians.

A. S. Haynes, Parker Patten and N. Martin, who were taken from the big bore in an unconscious condition, could not be revived.

KLAMATH FALLS AND MEDFORD MEET TONIGHT

Tonight will be the first basketball game of the season played in Medford. It will be between Klamath Falls high school and Medford high school. The Klamath Falls team is just starting on a trip of the Rogue River and Willamette valleys, playing only the strongest high school and college teams.

The Klamath Falls team is out after the state high school championship and the Medford boys have decided that Medford is the only town in Southern Oregon deserving of such a title and are determined to keep all the honors at home, as they did in football. The game will be played at the Wigwam, on West Main street.

BRUSH ACT OF KANSAS IS HELD UNCONSTITUTIONAL

WASHINGTON, D. C., Jan. 17.—The Brush act of the state of Kansas, imposing a "charter fee" upon foreign corporations, was held unconstitutional today by the supreme court of the United States, in rendering a decision in favor of the Western Union Telegraph company, which contested the act.

ICE GORGE BREAKS AND FLOOD COMES

Fort Klamath Sections Suffers Considerable Damage—Anna Creek Canyon Is Blocked.

KLAMATH FALLS, Jan. 17.—An ice gorge which formed in Anna Creek canyon has caused considerable damage near Fort Klamath.

When the gorge broke it flooded the Anna Creek country and the overflow left a heavy deposit of sand and pumice.

Anna Creek has left its former channel about a mile above Fort Klamath, but with a small outlay it can be redirected into its former course.

HOVER WILL PLANT PEARS AND PEACHES

President of Horticultural Society Preparing to Plant 17 Acres in Pears, Peaches Between.

"Orchardmen are busy nowadays," said G. A. Hover, president of the Rogue River Horticultural society, today. "Some are getting ready to plant more trees, others are preparing to commence spraying next month."

"For myself, I have been grubbing for the past week, taking out a lot of prune trees, preparatory to planting the ground to pears. There are about 17 acres of prunes on the place, and I will take them all out."

"I will plant Bose, Comice and Bartlett pears, and between the rows I intend planting Elberta, Foster, Tuscan Cling and Pacific Coast Cling peaches. The two latter varieties are conceded to be among the best for canning, and that is my idea of the peach trade in this section. With the great number of new apple and pear orchards being planted, the owners must persevere wait five or six years for a crop. The

JANUARY CLEARANCE SALE



ALL REMNANTS WINTER GOODS, ODDS of ENDS, Etc., Must and Will Move

Price will be the least consideration in this great January Clearance. We simply wish to clear out the goods and make room for the new spring stocks. You are invited to inspect our windows and go through our store. The prices and values were never so inviting and you can use the goods to very good advantage. **SUITS, COATS, DRESSES, WAISTS, PETTICOATS, SKIRTS, ETC., AT RIDICULOUS SALE FIGURES.**

THE HUTCHASON CO.

Formerly Baker-Hutchason Company

SCIENTIST DECLARES THAT CHARITY IS A DISGRACE

BOSTON, Mass., Jan. 17.—"Let the poor are depending on charity they are helpless and useless from an economic standpoint. In hospitals savings effort must be concentrated on the hopeless cases. We must sternly let the hopeless cases go the way of nature. It may sound cruel, but it is the only effective way in which to benefit the community at large. Therefore it is highly important that the educated be saved. It is the educated man who must be kept alive as long as possible."

This was the keynote of a lecture by Dr. W. E. Porter before the Harvard medical school today.

Dr. Porter qualified his sentiment by saying that he was "speaking as a scientist and not as a humanitarian."

The lecturer declared that it is necessary to safeguard and promote the health of children with the funds now given to charity and there are not enough funds for both.

"Let us spend it all on the children," said Dr. Porter. Continuing.

H. C. Garnett, H. L. Platt and W. A. Aitkens are in Portland attending the State Hardware Dealers' convention.

MOTOR CAR SATISFACTION

In Either Large or Small Cars is to be had, only when you purchase cars of known worth. In no other car can so much genuine satisfaction be found as

In The 1910 "BUICK"

White Streak

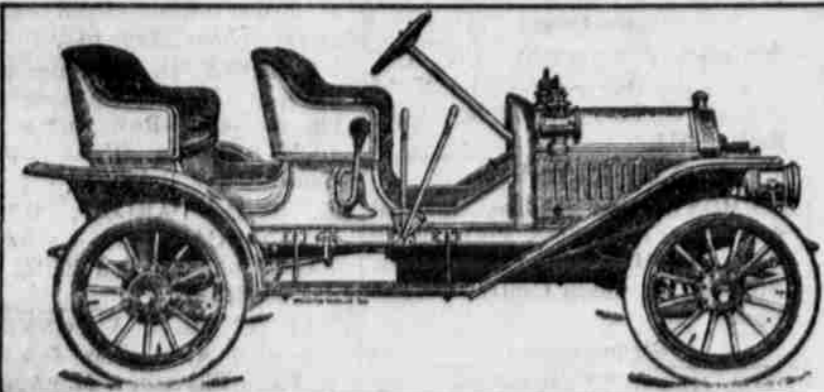
THIS FAMOUS LITTLE RUN-ABOUT HAS MANY IMITATORS, BUT NO EQUAL. IT IS NO EXPERIMENT AND NEEDS NO APOLOGIES. ASK ANYBODY. \$1150.00
F. O. B. PORTLAND.

Victorious Buick "40"

TOURING CAR AND ROADSTER BODIES. POWERFUL, SPEEDY, DURABLE, DIFFERS ONLY IN PRICE FROM ANY \$3500.00 CAR OBTAINABLE; 112-INCH WHEEL BASE, FOUR CLYINDERS, 4 1-2x5 VALVE IN THE HEAD CONSTRUCTION, SLIDING GEAR SELECTIVE TYPE, THREE SPEEDS FORWARD, ONE REVERSE, REMY MAGNETO, \$1900
F. O. B. PORTLAND.

Buick "30"

105-INCH WHEEL BASE, FOUR CYLINDERS, 4 1-2x4 1-2 VALVE IN THE HEAD CONSTRUCTION SLIDING GEAR SELECTIVE TYPE, THREE SPEEDS FORWARD, ONE REVERSE, REMY MAGNETO, COMPLETE, \$1550.00 F. O. B. PORTLAND



Medford Buick Co.

TOU VELLE, Manager

Garage Next Merriman's Blacksmith Shop on Riverside Avenue.

