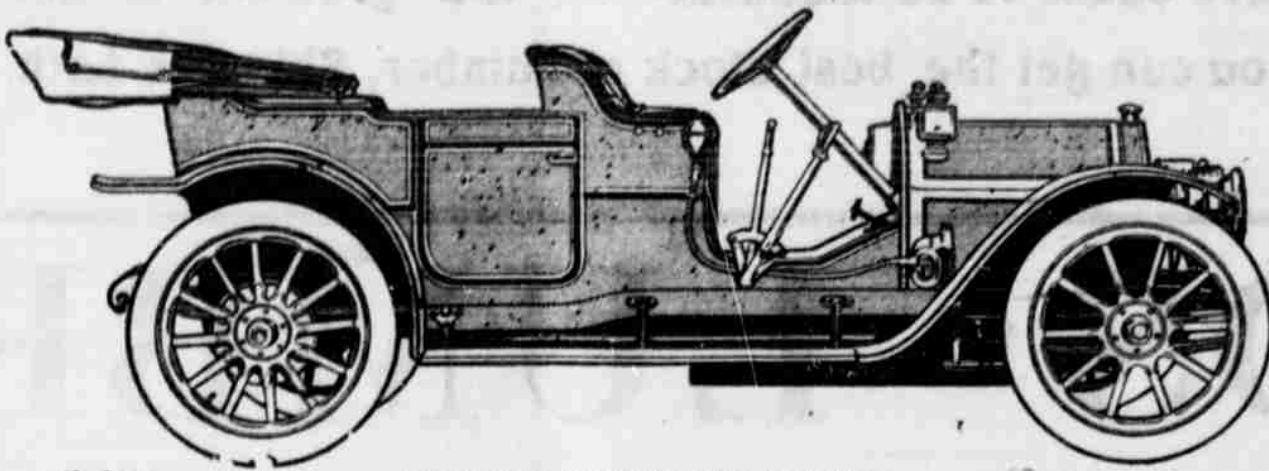


# The Chalmers - Detroit and Hudson Cars

## Are the Classiest of all Classy Cars

WE WANT YOU TO EXAMINE THESE NEW MODELS. YOU WILL FIND THEM QUALITY ALL THE WAY FROM THE TAIL LIGHT TO THE RADIATOR.

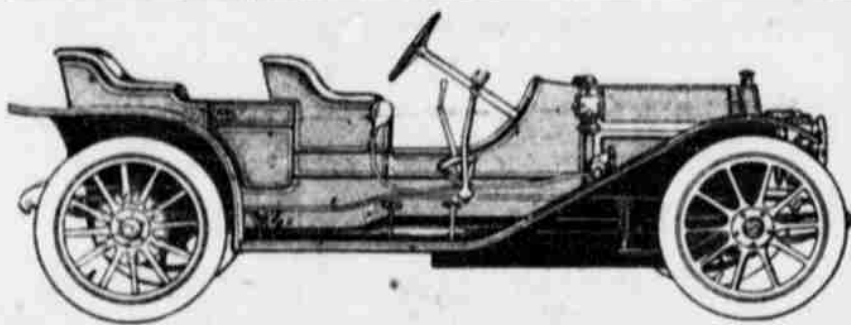
THEY ARE REAL HIGH GRADE "BUZZ WAGONS", ONLY THE "BUZZ" IS MUFFLED SO YOU CAN'T HEAR IT.



CHALMERS-DETROIT "30" TOURING.

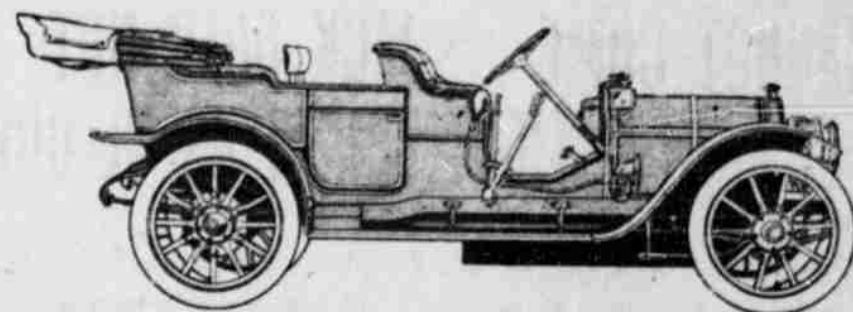
**MAGNETO INCLUDED? CERTAINLY, AND WHEN IT COMES TO FINISH AND WORKMANSHIP, WE'VE GOT OTHER DEALERS "TRIMMED TO A FRAZZLE."**

**COMPETITION? NO WE HAVEN'T ANY. ALL ALONE SO TO SPEAK AND WE ARE PROUD OF BEING LONESOME. GOING TO STAY SO, TOO.**



CHALMERS-DETROIT "30" PONY TONNEAU.

NOW DON'T TAKE OUR WORD FOR IT, WE NEITHER EXPECT NOR WANT YOU TO. BUT DO MAKE US GIVE YOU A DEMONSTRATION, WE MEAN A **DEMONSTRATION!** NOT OVER ASPHALT PAVEMENT BUT THE ROUGHEST KIND OF COBBLE STONES OR COUNTRY ROADS AND HILLS.



CHALMERS-DETROIT "40."

Phone or Call on

# THE VALLEY AUTO CO.

PHONE NO. 1861

## Why Don't You Try HUSSEY'S

WE CARRY THE MOST POPULAR SELLING LINE IN MEDFORD OF MEN AND LADIES' HANDKERCHIEFS, CHILDREN'S HANDKERCHIEFS FROM ONE CENT EACH UP. MEN'S HOSE, LADIES' HOSE, BOYS AND MISSES' HOSE, WOOL OR COTTON. LADIES' GLOVES, SILK AND WOOL; MEN'S WORK GLOVES, CANTON FLANNEL, GLENER DRESSING COMBS, FANCY SIDE AND BACK COMBS, ETC., HAIR BRUSHES, CLOTHES BRUSHES, TOOTH BRUSHES, SCRUB BRUSHES, WHISK BROOMS, ETC. HAND PAINTED CHINA, FANCY OLD CHINA, PLAIN WHITE PORCELAIN WARE, ENAMEL WARE, GALVENIZED IRONWARE, TINWARE, WOODENWARE, COOKING UTENSILS OF ALL KINDS, SHELF HARDWARE, ETC., AND THE MOST COMPLETE LINE OF TABLE TUMBLERS GLASSWARE, ETC., EVER SHOWN IN THE CITY.

## DOLLS

DOLLS FROM 5c TO \$10.00 EACH. YOU MUST SEE THESE TO APPRECIATE THEM.

OVER 10,000 POST CARDS OF ALL KINDS, 1c EACH.

## HUSSEY'S

The Busy Store

## MEDFORD FARED WELL AT SHOW

Took Medals Galore—In Fact, So Many That They May Have to Ship Them in by Freight.

Jackson county fared fairly well in awards at the Alaska-Youkon exposition, in medals, etc., most of them being for fruit exhibitions. Following is a list just issued:

Max Praet & Sons, Ashland, peaches, gold medal.  
George Dewey, Talent, apples, gold medal.  
G. A. Hover, Medford, fruit, gold medal.  
Medford Fruitgrowers' Association, Medford, apples, gold medal.  
E. B. Hunt, Ashland, fruit, silver medal.  
Bear Creek Orchard Company, Medford, pears, silver medal.  
Mitchell & Boeck, Medford, fruit, silver medal.  
S. R. Rolph, Ashland, pears, bronze medal.  
Poorfarm, Jacksonville, potatoes, bronze medal.  
J. A. Perry, Medford, fruit, bronze medal.  
F. E. Merriek, Medford, apricots, bronze medal.  
George Daggett, Medford, pears, bronze medal.  
Boxtoe & Bostwick, Medford, pears, bronze medal.  
W. G. Estof, Medford, bronze medal.  
Hillcrest Orchard company, Medford, pears, bronze medal.  
E. B. Waterman, Medford, pears, bronze medal.  
W. S. Haneliff, Medford, beets, bronze medal.  
R. W. Parsons, Medford, apples, bronze medal.  
Tronson & Guthrie, Medford, apples, bronze medal.  
A. L. Rhoades, Talent, potatoes, bronze medal.  
A. H. Calhoun, Phoenix, peaches, bronze medal.  
Murrell Orchard Co., Medford, pears, bronze medal.

In the line of awards on Pomology Oregon came through with a number of grand prizes, which the exhibits of the southern part of the

state aided materially in winning: State of Oregon, continuous display of grapes during season, grand prize. State of Oregon, continuous display of cherries during the season, grand prize. State of Oregon, continuous display of stone fruit during season, grand prize. State of Oregon, continuous display of storage apples, June 1 to October 16, grand prize.

### NOTICE

is hereby given that the undersigned will apply at the regular meeting of the city council of Medford, Oregon, on December 7, 1909, for license to sell malt, vinous and spirituous liquors in less quantities than one gallon, at lots 14, 15 and 16, block 21, in Medford, Oregon, for a period of twelve months.

YOUNG & HALL.

Dated November 21st.

### WE DON'T BELIEVE YOU CAN BEAT THIS:

Thirty-two acres in this tract, fine fruit land, about two miles from a shipping point. The buildings consist of a five-room box house, good-sized barn, etc. There are 12 acres of 5 and 6-year-old apples, mostly Newtowns, with commercial peaches planted between as fillers. Also three acres of young pear trees and some family orchard. Four acres in alfalfa. Six or eight acres of timber, mostly oak and laurel. There is a pumping plant on the place which supplies water for the garden and alfalfa, equipped with gasoline engine. About 40 rods from a good school. Has rural mail delivery and telephone. Price \$10,500. Terms.

W. T. YORK & CO.

## TO HOUSEWIVES



Now that cold weather is here, you will require more meats of various kinds than during the summer months, and it is to your interest to come where you can get the best. Such being the case, you will of course come to the

## Rex Market

Huth & Pech Props. Phone 32 71

J. E. ENYART, President J. A. PERRY, Vice-President.  
JOHN S. ORTH, Cashier W. B. JACKSON, Ass't Cashier.

## THE MEDFORD NATIONAL BANK

CAPITAL ..... \$50,000  
SURPLUS ..... \$10,000

Safety boxes for rent. A general Banking Business transacted. We solicit your patronage.

## WANTED

### Timber and Coal Lands

ENGINEERING AND SURVEYING CONTRACTS TAKEN AND ESTIMATES FURNISHED.

B. H. Harris & Co.  
MEDFORD, OREGON  
Office in Jackson County Bank Upstairs

## Think It Over

We carry the best lines of shoes made in the whole world

And represent the following manufacturers: The Krippendorf Dittman Co. of Cincinnati, Women's Fine Shoes; H. W. Merriam-Shoe Co., Newton, N. J., Children's Shoes; Howard & Foster Co., Brockton, Mass., Men's Fine Shoes. Above factories are among the largest in the world in their respective lines. Combined production close to 30,000 pairs each day in the year, and this enormous output without spending a dollar in advertising.

Quality Tells

C. M. Kidd The Foot-Fitter