



New Spring Suits and Coats for Ladies

We are now showing our first shipment of new Spring Coats and Suits. We are sure you will be pleased with the up-to-the-minute-ness of the styles, materials and colorings. Do not fail to see them. The prices you will find most reasonable, and from \$5 to \$10 lower than Portland prices.

We want you to come in and see them. You do not have to buy; perhaps you are not intending getting a suit at all this spring, but that is all right, we'd like to have you see what we have.

8617 Ladies' Waist Size 34, 36, 38, 40, 42, 44 inches bust measure.
8618 Ladies' Four-Piece Gingham Size 24, 26, 28, 30, 32 inches waist measure.

We have a becoming shape for every face

To satisfy the human race; They will give style, they will give grace. And make you fit for any place.

New Spring Suits for Boys

We were never better supplied with New Spring Suits for the boys than we are now. Why not bring the boys in and make your selections now while the stock is new and complete. We are offering some extra big values in the smaller sizes. Come in and see them.

Specials

Richardson's Stamped Pieces, consisting of Ladies' Gowns, Corset Covers, Hand Bags, Children's Dresses and numerous other articles ranging in value from 25c up to \$1.50. Your choice **One-Half Price**

Richardson's Stamped Pillow Tops, a good assortment of desirable patterns. Values up to 50c. Your choice **Ten Cents**

Genuine D. M. C. in No. 5 and No. 10, with the spool **Ten Cents**

Peri Lusta, color ecru, No. 50, the ball **Five Cts.**

Ladies' Shirt Waists, white and colored, values up to \$1.00. Your choice **Fifty Cents**

The PARIS FAIR

No stopping!

Bear Threadless Ball Valves can be opened up and every part removed in less than 2 minutes—and any valve can be flushed in a few seconds—

All without stopping the engine, without lowering the pressure, without drawing the liquid from the pump!

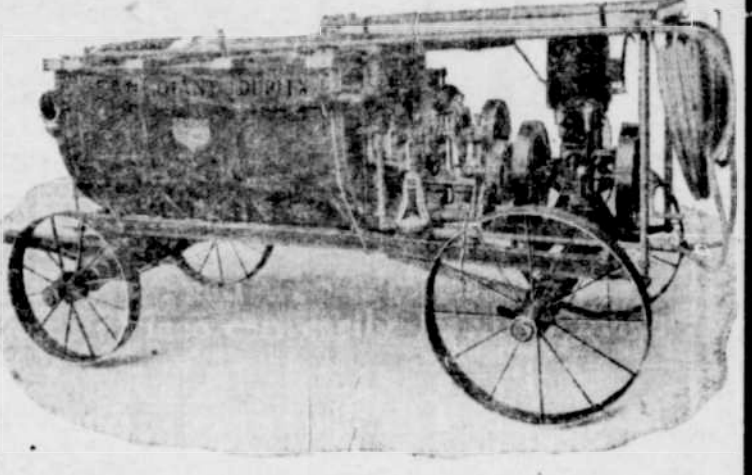
All valves are large metal balls—no threads whatever in valve seat—a patented feature found only in the Bear. Seats are reversible—a new valve in a jiffy, without expense.

No regrinding of valves or chopping out the threads in the valve case as in other machines.

Saves time. Saves money. Saves profanity. Sprays when you want it to spray.

"BEAN" POWER SPRAYERS

Has nine other big money and time saving features. We'll be glad to explain all about them, and the complete line of "Bean" hand and power sprayers and appliances.



D. McDONALD, Agt.
3rd & Cascade Sts., Hood River, Oregon

FAIRY SOAP

LARGE SIZE, PURE-WHITE-FLOATING, THREE CAKES FOR 25c THIS WEEK

The Arthur Pharmacy

Portland Painless Dentist

Why go to Portland to have Your Dental Work done when you can have it done at home just as good and in many cases better for the same money or less? Guaranteed for fifteen years. We employ only experienced and registered men. Should anything go wrong with your work you can come back with little or no expense and we will cheerfully make it right free of charge. Our Prices:

- Gold Crowns \$5.00
- Silver Fillings 1.00
- Full Upper or Lower Plate, rubber guaranteed 10.00
- Full Upper or Lower Plate, not guaranteed 7.00
- Bridge Teeth \$5.00
- Cynthetic Fillings 2.00
- ABSOLUTE PAINLESS EXTRACTION

Dr. Geo. A. Cutting
307 E. 2nd St., The Dalles, Ore.

Dr. H. L. Dumble

Physician and Surgeon
Residence 1031 Office 1241

Dr. William Morton Post

Dentist
Rooms 1 and 2 Hall Bldg. Phone 2101 HOOD RIVER, OREGON

DR. C. H. JENKINS

DENTIST
HOOD RIVER, OREGON
Office Phone 1081. Res. Phone 333

C. J. E. CARLSON

SHOE AND HARNES REPAIRING HARNES SUPPLIES
MOSIER - OREGON

DERBY & STEARNS

LAWYERS
HOOD RIVER, OREGON

J. W. ALLEN

Attorney-at-Law
THE DALLES OREGON

RAIL AUTO

Leaves Hood River daily at 1:30 p. m. and 5:00 p. m. On Sunday at 1:30 p. m., 5:00 p. m.

Leaves Parkdale daily at 7:20 a. m. and 3:00 p. m. On Saturday evening leaves Parkdale 6:30 p. m.

Evening Train: leaves Hood River daily at eight returning at 2.

Leaves Hood River daily at 1:30 p. m. and 5:00 p. m. On Sunday at 1:30 p. m., 5:00 p. m.

Leaves Parkdale daily at 7:20 a. m. and 3:00 p. m. On Saturday evening leaves Parkdale 6:30 p. m.

Evening Train: leaves Hood River daily at eight returning at 2.

Leaves Hood River daily at 1:30 p. m. and 5:00 p. m. On Sunday at 1:30 p. m., 5:00 p. m.

Leaves Parkdale daily at 7:20 a. m. and 3:00 p. m. On Saturday evening leaves Parkdale 6:30 p. m.

Evening Train: leaves Hood River daily at eight returning at 2.

Leaves Hood River daily at 1:30 p. m. and 5:00 p. m. On Sunday at 1:30 p. m., 5:00 p. m.

Leaves Parkdale daily at 7:20 a. m. and 3:00 p. m. On Saturday evening leaves Parkdale 6:30 p. m.

Evening Train: leaves Hood River daily at eight returning at 2.

Leaves Hood River daily at 1:30 p. m. and 5:00 p. m. On Sunday at 1:30 p. m., 5:00 p. m.

Leaves Parkdale daily at 7:20 a. m. and 3:00 p. m. On Saturday evening leaves Parkdale 6:30 p. m.

Evening Train: leaves Hood River daily at eight returning at 2.

Leaves Hood River daily at 1:30 p. m. and 5:00 p. m. On Sunday at 1:30 p. m., 5:00 p. m.

Leaves Parkdale daily at 7:20 a. m. and 3:00 p. m. On Saturday evening leaves Parkdale 6:30 p. m.

Evening Train: leaves Hood River daily at eight returning at 2.

Leaves Hood River daily at 1:30 p. m. and 5:00 p. m. On Sunday at 1:30 p. m., 5:00 p. m.

Leaves Parkdale daily at 7:20 a. m. and 3:00 p. m. On Saturday evening leaves Parkdale 6:30 p. m.

Evening Train: leaves Hood River daily at eight returning at 2.

Leaves Hood River daily at 1:30 p. m. and 5:00 p. m. On Sunday at 1:30 p. m., 5:00 p. m.

Leaves Parkdale daily at 7:20 a. m. and 3:00 p. m. On Saturday evening leaves Parkdale 6:30 p. m.

Evening Train: leaves Hood River daily at eight returning at 2.

Leaves Hood River daily at 1:30 p. m. and 5:00 p. m. On Sunday at 1:30 p. m., 5:00 p. m.

Leaves Parkdale daily at 7:20 a. m. and 3:00 p. m. On Saturday evening leaves Parkdale 6:30 p. m.

Evening Train: leaves Hood River daily at eight returning at 2.

Leaves Hood River daily at 1:30 p. m. and 5:00 p. m. On Sunday at 1:30 p. m., 5:00 p. m.

Leaves Parkdale daily at 7:20 a. m. and 3:00 p. m. On Saturday evening leaves Parkdale 6:30 p. m.

Evening Train: leaves Hood River daily at eight returning at 2.

Leaves Hood River daily at 1:30 p. m. and 5:00 p. m. On Sunday at 1:30 p. m., 5:00 p. m.

Leaves Parkdale daily at 7:20 a. m. and 3:00 p. m. On Saturday evening leaves Parkdale 6:30 p. m.

Evening Train: leaves Hood River daily at eight returning at 2.

Leaves Hood River daily at 1:30 p. m. and 5:00 p. m. On Sunday at 1:30 p. m., 5:00 p. m.

Leaves Parkdale daily at 7:20 a. m. and 3:00 p. m. On Saturday evening leaves Parkdale 6:30 p. m.

Evening Train: leaves Hood River daily at eight returning at 2.

Leaves Hood River daily at 1:30 p. m. and 5:00 p. m. On Sunday at 1:30 p. m., 5:00 p. m.

Leaves Parkdale daily at 7:20 a. m. and 3:00 p. m. On Saturday evening leaves Parkdale 6:30 p. m.

Evening Train: leaves Hood River daily at eight returning at 2.

Leaves Hood River daily at 1:30 p. m. and 5:00 p. m. On Sunday at 1:30 p. m., 5:00 p. m.

Leaves Parkdale daily at 7:20 a. m. and 3:00 p. m. On Saturday evening leaves Parkdale 6:30 p. m.

Evening Train: leaves Hood River daily at eight returning at 2.

Leaves Hood River daily at 1:30 p. m. and 5:00 p. m. On Sunday at 1:30 p. m., 5:00 p. m.

Leaves Parkdale daily at 7:20 a. m. and 3:00 p. m. On Saturday evening leaves Parkdale 6:30 p. m.

Evening Train: leaves Hood River daily at eight returning at 2.

Leaves Hood River daily at 1:30 p. m. and 5:00 p. m. On Sunday at 1:30 p. m., 5:00 p. m.

Leaves Parkdale daily at 7:20 a. m. and 3:00 p. m. On Saturday evening leaves Parkdale 6:30 p. m.

Evening Train: leaves Hood River daily at eight returning at 2.

Leaves Hood River daily at 1:30 p. m. and 5:00 p. m. On Sunday at 1:30 p. m., 5:00 p. m.

Leaves Parkdale daily at 7:20 a. m. and 3:00 p. m. On Saturday evening leaves Parkdale 6:30 p. m.

Evening Train: leaves Hood River daily at eight returning at 2.

Leaves Hood River daily at 1:30 p. m. and 5:00 p. m. On Sunday at 1:30 p. m., 5:00 p. m.

Leaves Parkdale daily at 7:20 a. m. and 3:00 p. m. On Saturday evening leaves Parkdale 6:30 p. m.

Evening Train: leaves Hood River daily at eight returning at 2.

Leaves Hood River daily at 1:30 p. m. and 5:00 p. m. On Sunday at 1:30 p. m., 5:00 p. m.

Leaves Parkdale daily at 7:20 a. m. and 3:00 p. m. On Saturday evening leaves Parkdale 6:30 p. m.

Evening Train: leaves Hood River daily at eight returning at 2.

Leaves Hood River daily at 1:30 p. m. and 5:00 p. m. On Sunday at 1:30 p. m., 5:00 p. m.

Leaves Parkdale daily at 7:20 a. m. and 3:00 p. m. On Saturday evening leaves Parkdale 6:30 p. m.

Evening Train: leaves Hood River daily at eight returning at 2.

Leaves Hood River daily at 1:30 p. m. and 5:00 p. m. On Sunday at 1:30 p. m., 5:00 p. m.

Leaves Parkdale daily at 7:20 a. m. and 3:00 p. m. On Saturday evening leaves Parkdale 6:30 p. m.

Evening Train: leaves Hood River daily at eight returning at 2.

Leaves Hood River daily at 1:30 p. m. and 5:00 p. m. On Sunday at 1:30 p. m., 5:00 p. m.

Leaves Parkdale daily at 7:20 a. m. and 3:00 p. m. On Saturday evening leaves Parkdale 6:30 p. m.

Evening Train: leaves Hood River daily at eight returning at 2.

Leaves Hood River daily at 1:30 p. m. and 5:00 p. m. On Sunday at 1:30 p. m., 5:00 p. m.

Leaves Parkdale daily at 7:20 a. m. and 3:00 p. m. On Saturday evening leaves Parkdale 6:30 p. m.

Evening Train: leaves Hood River daily at eight returning at 2.

Leaves Hood River daily at 1:30 p. m. and 5:00 p. m. On Sunday at 1:30 p. m., 5:00 p. m.

Leaves Parkdale daily at 7:20 a. m. and 3:00 p. m. On Saturday evening leaves Parkdale 6:30 p. m.

Evening Train: leaves Hood River daily at eight returning at 2.

Leaves Hood River daily at 1:30 p. m. and 5:00 p. m. On Sunday at 1:30 p. m., 5:00 p. m.

Leaves Parkdale daily at 7:20 a. m. and 3:00 p. m. On Saturday evening leaves Parkdale 6:30 p. m.

Evening Train: leaves Hood River daily at eight returning at 2.

Leaves Hood River daily at 1:30 p. m. and 5:00 p. m. On Sunday at 1:30 p. m., 5:00 p. m.

Leaves Parkdale daily at 7:20 a. m. and 3:00 p. m. On Saturday evening leaves Parkdale 6:30 p. m.

Evening Train: leaves Hood River daily at eight returning at 2.

Leaves Hood River daily at 1:30 p. m. and 5:00 p. m. On Sunday at 1:30 p. m., 5:00 p. m.

Leaves Parkdale daily at 7:20 a. m. and 3:00 p. m. On Saturday evening leaves Parkdale 6:30 p. m.

Evening Train: leaves Hood River daily at eight returning at 2.

Leaves Hood River daily at 1:30 p. m. and 5:00 p. m. On Sunday at 1:30 p. m., 5:00 p. m.

Leaves Parkdale daily at 7:20 a. m. and 3:00 p. m. On Saturday evening leaves Parkdale 6:30 p. m.

Evening Train: leaves Hood River daily at eight returning at 2.

Leaves Hood River daily at 1:30 p. m. and 5:00 p. m. On Sunday at 1:30 p. m., 5:00 p. m.

Leaves Parkdale daily at 7:20 a. m. and 3:00 p. m. On Saturday evening leaves Parkdale 6:30 p. m.

Evening Train: leaves Hood River daily at eight returning at 2.

Leaves Hood River daily at 1:30 p. m. and 5:00 p. m. On Sunday at 1:30 p. m., 5:00 p. m.

Leaves Parkdale daily at 7:20 a. m. and 3:00 p. m. On Saturday evening leaves Parkdale 6:30 p. m.

Evening Train: leaves Hood River daily at eight returning at 2.

Leaves Hood River daily at 1:30 p. m. and 5:00 p. m. On Sunday at 1:30 p. m., 5:00 p. m.

Leaves Parkdale daily at 7:20 a. m. and 3:00 p. m. On Saturday evening leaves Parkdale 6:30 p. m.

Evening Train: leaves Hood River daily at eight returning at 2.

Leaves Hood River daily at 1:30 p. m. and 5:00 p. m. On Sunday at 1:30 p. m., 5:00 p. m.

Leaves Parkdale daily at 7:20 a. m. and 3:00 p. m. On Saturday evening leaves Parkdale 6:30 p. m.

Evening Train: leaves Hood River daily at eight returning at 2.

Leaves Hood River daily at 1:30 p. m. and 5:00 p. m. On Sunday at 1:30 p. m., 5:00 p. m.

Leaves Parkdale daily at 7:20 a. m. and 3:00 p. m. On Saturday evening leaves Parkdale 6:30 p. m.

Evening Train: leaves Hood River daily at eight returning at 2.

Leaves Hood River daily at 1:30 p. m. and 5:00 p. m. On Sunday at 1:30 p. m., 5:00 p. m.

Leaves Parkdale daily at 7:20 a. m. and 3:00 p. m. On Saturday evening leaves Parkdale 6:30 p. m.

Evening Train: leaves Hood River daily at eight returning at 2.

Leaves Hood River daily at 1:30 p. m. and 5:00 p. m. On Sunday at 1:30 p. m., 5:00 p. m.

Leaves Parkdale daily at 7:20 a. m. and 3:00 p. m. On Saturday evening leaves Parkdale 6:30 p. m.

Evening Train: leaves Hood River daily at eight returning at 2.

Leaves Hood River daily at 1:30 p. m. and 5:00 p. m. On Sunday at 1:30 p. m., 5:00 p. m.

Leaves Parkdale daily at 7:20 a. m. and 3:00 p. m. On Saturday evening leaves Parkdale 6:30 p. m.

Evening Train: leaves Hood River daily at eight returning at 2.

Leaves Hood River daily at 1:30 p. m. and 5:00 p. m. On Sunday at 1:30 p. m., 5:00 p. m.

Leaves Parkdale daily at 7:20 a. m. and 3:00 p. m. On Saturday evening leaves Parkdale 6:30 p. m.

Evening Train: leaves Hood River daily at eight returning at 2.

Leaves Hood River daily at 1:30 p. m. and 5:00 p. m. On Sunday at 1:30 p. m., 5:00 p. m.

Leaves Parkdale daily at 7:20 a. m. and 3:00 p. m. On Saturday evening leaves Parkdale 6:30 p. m.

Evening Train: leaves Hood River daily at eight returning at 2.

Leaves Hood River daily at 1:30 p. m. and 5:00 p. m. On Sunday at 1:30 p. m., 5:00 p. m.

Leaves Parkdale daily at 7:20 a. m. and 3:00 p. m. On Saturday evening leaves Parkdale 6:30 p. m.

Evening Train: leaves Hood River daily at eight returning at 2.

Leaves Hood River daily at 1:30 p. m. and 5:00 p. m. On Sunday at 1:30 p. m., 5:00 p. m.

Leaves Parkdale daily at 7:20 a. m. and 3:00 p. m. On Saturday evening leaves Parkdale 6:30 p. m.

Evening Train: leaves Hood River daily at eight returning at 2.

Leaves Hood River daily at 1:30 p. m. and 5:00 p. m. On Sunday at 1:30 p. m., 5:00 p. m.

Leaves Parkdale daily at 7:20 a. m. and 3:00 p. m. On Saturday evening leaves Parkdale 6:30 p. m.

Evening Train: leaves Hood River daily at eight returning at 2.

Leaves Hood River daily at 1:30 p. m. and 5:00 p. m. On Sunday at 1:30 p. m., 5:00 p. m.

Leaves Parkdale daily at 7:20 a. m. and 3:00 p. m. On Saturday evening leaves Parkdale 6:30 p. m.

Evening Train: leaves Hood River daily at eight returning at 2.

Leaves Hood River daily at 1:30 p. m. and 5:00 p. m. On Sunday at 1:30 p. m., 5:00 p. m.

Leaves Parkdale daily at 7:20 a. m. and 3:00 p. m. On Saturday evening leaves Parkdale 6:30 p. m.

Evening Train: leaves Hood River daily at eight returning at 2.

Leaves Hood River daily at 1:30 p. m. and 5:00 p. m. On Sunday at 1:30 p. m., 5:00 p. m.

Leaves Parkdale daily at 7:20 a. m. and 3:00 p. m. On Saturday evening leaves Parkdale 6:30 p. m.

Evening Train: leaves Hood River daily at eight returning at 2.

Leaves Hood River daily at 1:30 p. m. and 5:00 p. m. On Sunday at 1:30 p. m., 5:00 p. m.

Leaves Parkdale daily at 7:20 a. m. and 3:00 p. m. On Saturday evening leaves Parkdale 6:30 p. m.

Evening Train: leaves Hood River daily at eight returning at 2.

Leaves Hood River daily at 1:30 p. m. and 5:00 p. m. On Sunday at 1:30 p. m., 5:00 p. m.

Leaves Parkdale daily at 7:20 a. m. and 3:00 p. m. On Saturday evening leaves Parkdale 6:30 p. m.

Evening Train: leaves Hood River daily at eight returning at 2.

Leaves Hood River daily at 1:30 p. m. and 5:00 p. m. On Sunday at 1:30 p. m., 5:00 p. m.

Leaves Parkdale daily at 7:20 a. m. and 3:00 p. m. On Saturday evening leaves Parkdale 6:30 p. m.

</