

Your RED & WHITE Store

PLENTY OF COFFEE!

RED & WHITE, Drip Grind lb. 34¢
 RED & WHITE, Regular Grind lb. 34¢

HEMO - The new health drink 59¢
LADY GODIVA Beauty Soap 3 for 17¢
BRIMFUL SOAP 36 oz. 33¢
CLEANSER - Old Dutch 2 for 15¢
DRAIN & BOWL CLEANER - Purex 17¢
LYE - Red & White 9¢
BLEACHING FLUID - Purex 1/2 gal. 27¢
LIGHT GLOBES Superlite to 60's 15¢
 Superlite 75 to 100's 20¢
GLO-COAT - Johnson's quart 98¢
GLASS CLEANER - Clearex 12 oz. 25¢
WONDER CLEANALL 49¢
VANILLA - Smith Better with premium \$1.25
ICE BOX COOKIES - 40 delicious cakes 25¢
APRICOTS - Red & White No. 2 1/2's 29¢
Brooms OUR VALUE 73¢
 RED & WHITE 95¢

Fresh Fruits & Vegetables

LETTUCE - Fresh Local head 5¢
 CELERY - Utah Large each 13¢
 HUBBARD SQUASH lb. 4¢
 ONIONS - Spanish Sweet 3 lbs. 10¢
 LEMONS - Large Sunkist 6 for 13¢

Meat Department—

LINK SAUSAGE 33¢
SIRLOIN STEAK 37¢
BEEF ROAST 27¢
WIENERS 25¢

Hermiston Trading Co

RED & WHITE STORE

ONE DELIVERY DAILY — — — — 10:30 A. M.

ALL-OUT EFFORT FOR WAR FOOD NEW PROGRAM

All-out war food production for every small and part-time farm in Umatilla county is the goal of a six-point wartime program assigned the Farm Security Administration by Secretary of Agriculture Wickard, announces Arnold K. Harrang, county FSA supervisor, Hartman Abstract building, Pendleton, who returned last week from a two-day staff meeting at Baker where the new Food for Freedom orders were received.

"Farm labor and equipment shortages are already handicapping food production of many larger operators in this area at a time when food rationing is already a possibility and food needs of our armed forces, factory workers and lend-lease are increasing," Harrang said. "Only the farmer with enough family labor, land and experience to add several cows to his herd, expand his hog enterprise or increase his poultry flock, can help meet unprecedented 1943 war food demands."

Secretary Wickard's six directives ask FSA to:

1. Put every small farm operator with idle labor and resources on the nation's food production line through necessary operating credit, health protection and secure tenure.
2. Establish planned food production goals for present FSA borrowers to meet local shortages.
3. Aid and develop food processing, storage, marketing and transportation facilities for small farmer production.
4. Provide housing and transportation for farm labor mobilization.
5. Secure best and fullest use of available farm land in assisting farmers to secure leases, and supplement present inadequate units.
6. To help meet local shortages of equipment, machinery and services by organizing cooperative groups of small farmers for joint purchase and use of machines, sires, transportation equipment, repair centers and other services.

"Food for Freedom loans, up to \$2500, are now available to every small and part-time farmer in this area who can increase production of fighting foods for home use or market and is unable to secure adequate credit from local banks or PCA," Harrang said. "Loans can be made for livestock, feed, seed, equipment, cooperative services, and building repair. Bearing five per cent interest they are repayable over a five-year period on recoverable goods and one to two years on non-recoverable goods such as feed and seed."

Although loan funds available this year are less than last year, an attempt will be made to reach more farmers with smaller loans, explained Harrang. Information and applications for FSA loans may be secured at the County FSA office in the Hartman Abstract building in Pendleton, or on Thursdays from 2 p. m. to 4 p. m. in the Reclamation building in Hermiston.

SHARING FARM MACHINERY IS ASKED BY BOARD

Farm machinery rationing means "sharing farm equipment for the duration" if Umatilla county farmers are to maintain maximum Food for Freedom production, announces A. R. Coppock of the County USDA War Board and chairman of the farm machinery rationing committee. "All farmers desiring new farm machinery or equipment in the scarce classification are required to obtain certification as to the need from the county rationing committee," Mr. Coppock said. "Granting of approval for a purchase will depend upon inability to repair present equipment, need in terms of war food production, and willingness to share machinery with other farmers. Preference for purchase of new machinery will be given where the fullest possible use of the machinery in vital war food production can be shown. Every piece of machinery or equipment where arrangements can be made for its use on two to five farms, means an additional small tank or field gun for our armed forces. Equally important is the repair and maintenance of all useable existing equipment.

"Farmers needing equipment or machinery can help greatly in the fair distribution of supplies by laying plans for joint use and ownership, or rental and custom work for neighboring farmers if necessary, before applying for a rationing certificate.

"Technical and financing aid where necessary in setting up cooperative machinery and equipment services can be obtained through the County Farm Security office, Johns Bldg., Pendleton, Oregon."

Farm WAR NEWS

Rationing Change Announced

The Umatilla county rationing committee announces an amendment to the farm machinery rationing order that will save farmers the necessity of making certification to dealers before purchasing small items. All machinery and implements including attachments having a retail value of less than \$25 have been exempted from Group B—items requiring certification.

Copper Chemical Order Eased

The county USDA War Board has been informed of a change to the recently-announced WPB order controlling sales of copper chemicals. To obtain copper sulphate or copper carbonate for agricultural use, a farmer need only certify to his dealer that the material will be so used.

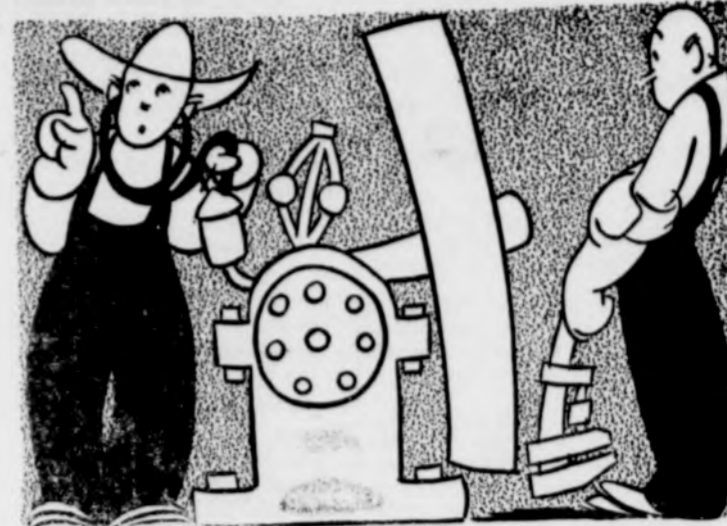
Wickard Predicts Action

The government will take vigorous action soon to keep all good farms producing and make best use of available agricultural manpower, Secretary Wickard told an Illinois audience this week. Farm labor program will include assistance to nation's "underemployed" farmers in moving from marginal farms to more productive farms being abandoned in some areas because of the labor shortage, other war reasons.

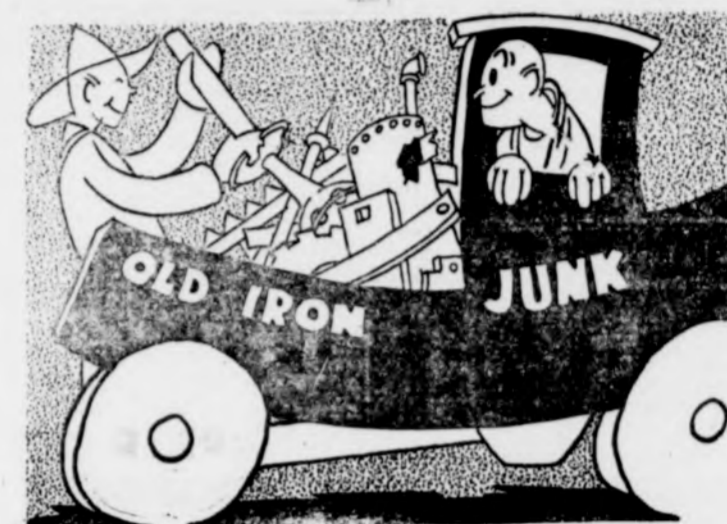
More Warcrops Wanted

Oregon wheat growers are asked to divert as much wheat acreage as they can to crops more needed in the war effort. Approved "warcrops", which can be substituted for wheat to qualify a farm for production adjustment payments under the 1934 AAA program, include cover crop seeds, sugar beets, flaxseed, dry beans and dry peas. Payments will also be conditioned on the farm's 1943 war crop goal being met. Crawler-type tractors cannot be released by the farm machinery ra-

Save and Sell for Victory



SAVE all good farm machinery. Make repairs. Order needed new parts. Swap equipment and parts with your neighbors. Keep wartime food production rolling.



SELL your old iron and steel. Get it to your junk dealer right away. Steel mills are working 24 hours a day. They need scrap for every batch of steel.

tioning committee, the county USDA War Board advises. It is still necessary for a prospective purchaser of a crawler-type tractor to apply to the War Production Board for a release. **Feed Wheat Sales Up**
 An increasing volume of Oregon's wheat surplus is being converted into milk, meat, eggs, and wool, the state USDA War Board reports. During September, 256,000 bushels of Commodity Credit wheat was sold to Oregon farmers for feeding to livestock and poultry under the government's feed wheat program. Farmers and dealers wishing to purchase wheat can get information from the county AAA office.

CENTRAL CHURCH OF CHRIST

C. Warner, Pastor
 We will worship Sunday morning around the words of Pilate as recorded in John 19:5, "Behold the Man."

The sermon topic for Sunday evening will be, "The Way of Faith," and we suggest that I Peter 1:3-25, and Hebrews 11 be read in advance, as a background and an introduction.

The Bible school meets at 10 a. m., morning worship at 11 a. m., Junior-Intermediate C. E. at 3 p. m., Senior C. E. at 7 p. m. and evening worship at 8 p. m.

BOARDMAN NEWS

Mrs. Margaret Thorpe

Mrs. Lloyd Stoltz returned Sunday from a weeks visit in Portland and St. Helens.

J. T. Bullock returned to his home in Pendleton last Tuesday after visiting a few days with his daughters, Mrs. Minnie McFarland and Miss Effie Bullock.

Mrs. Hood returned Friday from White Salmon where she has been visiting with her daughter.

I. Skoubo returned home from the hospital in Pendleton Saturday. He has been there for several days after being injured by a horse.

Pomona Grange met at Boardman Saturday with a very small attendance. There were ten members from the south end of the county. It was decided to only meet twice a year after this. The meeting days will be the first Saturday in May and November.

A. McFarland and I. Skoubo motored to Heppner Wednesday to attend a sale.

Mr. and Mrs. Nathan Thorpe and family returned Sunday from a ten day trip to the valley and the coast.

Mrs. Josephine Rands and Mrs. Paul Smith spent last Wednesday in Hermiston canning beans.

Mr. Baker injured his back last week and is unable to work on the oiling crew.

Mrs. Parsons left Monday night for Spokane where she will make her home.

Mr. and Mrs. Chichester from Huntsville, Wash., returned to their home Monday after a weeks visit at the home of their daughter, Mrs. Gladys Ford. Elmer Chichester, Mrs. Ford's brother, motored down from Huntsville and got them.

Doris Wilson spent the week end in The Dalles with her sisters Mrs. Joe McClaskey and Phyllis Wilson. Joe Morrison has sold his farm on the east end to Mr. and Mrs. Connors who are in the hotel.

Mrs. C. J. Alexander of Portland stopped for a few minutes visit Sunday with her girlhood chum, Mrs. Margaret Klitz.

Mr. and Mrs. J. F. Barlow and Mrs. Klitz spent Saturday in Hermiston.

Mr. and Mrs. Marlow spent Monday night in The Dalles.

HOW

would you plan a *Wartime Trip?*



Today, it's vitally important that you plan your trips carefully. Why?

Do you know—

- 1 Buses will carry 250,000,000 more passengers this year!
- 2 Bus lines have changed schedules to conserve vital materials!
- 3 Buses are carrying the greatest load in their history! go week days!

These changed conditions require careful trip-planning for better traveling.

How to have a better trip—

- 1 Travel only when necessary; plan trips in advance.
- 2 Select less crowded schedules; go week days.
- 3 Get tickets early; take only 1 suitcase.

Hermiston Drug Co. Phone 2271



SAFEWAY Homemakers' Guide

Are you sure your family is fed right?

DID YOU KNOW that our Government says: "The Nation is under-nourished?"

DID YOU KNOW that you and your family can eat three square meals each day and still be under-fed?

DID YOU KNOW that meals properly designed for good nutrition can lose much of their value in cooking?

To help in the Government's program to make this Nation the first national family of buoyantly healthy people the world has ever known, Safeway Homemakers' Bureau is offering a correspondence course in nutrition and menu planning. It is a completely revised edition of Julia Lee Wright's "Kitchen Course in Nutrition", first offered a year ago—the correspondence course in nutrition which helped thousands to enjoy better health. This new "Kitchen Course in Nutrition" is just off the press, to meet war-time demands and includes the newest nutritional standards recommended by our Government.

It's a personalized course, so flexible it will enable you to work out your family food problems regardless of size or ages. It's a course that you can and should use every day.

This material, gathered from Government and Homemakers' Bureau sources costs thousands of dollars. Yet this practical and understandable course, condensed and organized by our own Graduate Nutritionists, is available to you by mail for only 25c.

Just send 25c and your name and address to Julia Lee Wright, P. O. Box 660CC, Oakland, California.

Safeway Guaranteed Meats

Your Government has requested that you and your family eat no more than two and one half pounds of meat per person weekly. Let's all cooperate. Buy no more than your family's share for victory.

BEEF ROAST Blade Cuts Lb. 28¢
SIRLOIN STEAK Tender Lb. 37¢
BOILING BEEF Lb. 17¢
PORK SAUSAGE country style, Lb. 29¢
PORK ROAST center cuts Lb. 32¢

Buy WAR BONDS & STAMPS With What You Save Here!

Kidney Beans, No. 2 can 15¢
 Van Camp's Red
Asparagus, 8 oz. can 12¢
 Santa Cruz All Green
Creamettes, 2 pkgs. 15¢
 Macaroni Product
Mayonnaise, pint jar 25¢
 Nu-Made extra fresh
Mayonnaise, pint jar 31¢
 Best Foods
Catsup, 14 oz. bottle 12¢
 Red Hill
Ketchup, 14 oz. bottle 19¢
 Heinz
Kitchen Bouquet, reg. bottle 39¢
 For Gravies
Morton's Salt, 2 pkgs. 15¢
 Plain or Iodized
O K Laundry Soap, per bar 5¢
Camay, Lux, Lifebuoy, 3 for 19¢
 and Palmolive

Woodbury's, 4 bar deal 25¢
 Facial Soap
Gro-Pup Dog Food, 25-oz. pkg. 24¢
 Kellogg's
North Star Dog Food, 3 lb. pkg. 33¢
Gingerbread Mix, 14 oz. pkg. 19¢
 Dromedary
Gerber's Dry Cereal, 8 oz. pkg. 15¢
 and Oatmeal
Zee Tissue, 4 roll family pkg. 19¢
Purex, 1/2 gal. jug 23¢
Blue Karo Syrup, 5 lb. tin 39¢
Albers Corn Flakes, 3 for 25¢
 11 oz. Pkgs.
Highway Pumpkin, 3 for 25¢
 No. 2 1/2 Tins
Del Monte Sweet Potatoes, tin 21¢
 No. 2 1/2 Tins
Cranberry Sauce, 17 oz. tin 14¢
Libby Apple Butter, 33 oz. jar 23¢

SUPURB
Granulat. Soap
 24 oz. box 20¢
 50 oz. box 39¢

EDWARDS
Coffee
 lb. bag 24¢

Royal Satin
Shortening
 3 lb jar 64¢
 Crisco 3 lb. 71c

REMEMBER: All Safeway prices are low—every day

