

SUMMONS

Equity No. 6286

IN THE CIRCUIT COURT OF THE STATE OF OREGON FOR UMATILLA COUNTY.

STATE OF OREGON, represented and acting by the World War Veterans State Aid Commission, Plaintiff,

vs.

LOGAN C. TODD and Dorothy R. Todd, his wife; Umatilla Electric Co-operative Association, a corporation; The First National Bank of Hermiston, a National Banking Corporation; Umatilla County, Oregon, a quasi-municipal corporation; Harry R. Newport and Maria L. Newport, his wife; John James Seaton and Jane Doe Seaton, his wife; and Eli Winesett, Defendants.

To: John James Seaton and Jane Doe Seaton, his wife; and Eli Winesett,

IN THE NAME OF THE STATE OF OREGON:

You are hereby required to appear and answer the complaint filed against you, in the above entitled court and cause, within four weeks from the date of the first publication of this summons, and if you fail to so appear and answer for want thereof plaintiff will apply to said court for the relief prayed for and demanded in said complaint, to-wit:

A decree for the foreclosure of plaintiff's mortgage upon the hereinafter described real property, to-wit:

From the southwest corner of the NW 1/4 SE 1/4 of Section 12, Township 4 north Range 28, E. W. M., east 0 degrees 26 minutes south 1620 feet to a point in "A" Line Canal; thence east 31 degrees 22 minutes north 447 feet to a point in center of "A" Line Canal, the point of beginning; thence east 31 degrees 22 minutes north 306 feet to a point in said "A" Line Canal; thence north 13 degrees 9 minutes east 207 feet to a point in said "A" Line Canal; thence north 27 degrees 59 minutes east, 345 feet to a point in said "A" Line Canal; thence north 53 degrees 19 minutes east, 197 feet to a point in said "A" Line Canal, and a point on the east line of said Section 12; thence north on said section line 655 feet to a point in center of "C" Line Canal; thence west 0 degrees 48 minutes south, 270 feet, to a point in center of "C" Line Canal; thence west 57 degrees 38 minutes south 263 feet, to a point in center of "C" Line Canal; thence west 29 degrees 16 minutes south 237 feet, to a point in center of "C" Line Canal; thence west 41 degrees 59 minutes south, 625 feet to a point in center of "C" Line Canal; thence west 19 degrees 54 minutes south, six feet to a point in center of "C" Line Canal; thence south 31 degrees 42 minutes east 962 feet, to point of beginning.

And for a decree that plaintiff have a first and prior lien created by a mortgage given by Logan C. Todd and Dorothy R. Todd, his wife, to plaintiffs upon said real property, and that said lien and mortgage is prior and superior to any lien or interest of the defendants herein, or any persons claiming by, through or under them, or anyone of them, and that they be forever barred and foreclosed of all right, title, interest and claim in and to said real property, and each and every part and parcel thereof, save and except the statutory right of redemption, and

For a further decree that plaintiff has a right, interest and estate, and is now in possession of said premises, and that such right, interest and possession is free from any right, title, estate, lien or interest of said defendants, or any one or more of them, and that they have no right, title, estate, lien or interest in said land or any part thereof, and restraining and enjoining said defendants from asserting or claiming any right, title, claim, lien or interest in said land, or any part thereof, adverse to plaintiff, and for such other and further general relief as to the

Court may seem meet and equitable. This summons is published in the Hermiston Herald, a weekly newspaper published in Hermiston, Oregon, for four successive weeks, pursuant to an order made and entered herein by the Hon. Calvin L. Sweek, Circuit Judge of the above entitled court, on the 30th day of June, 1938, and the date of the first publication of this summons is the 30th day of June, 1938.

C. C. PROEBSTEL, Attorney for Plaintiff, Resident and Post Office Address, Pendleton, Oregon. (June 30-July 28)

COUNTY COURT

CLAIMS ALLOWED BY THE COUNTY COURT AT THE JUNE, 1938, TERM EXCEPT CERTAIN

CLAIMS ALLOWED BY STATUTE:

Table listing various claims and amounts, including Nina Sloan, County Court (26.55), John J. Merrifield, Emerg. (28.00), Mayme Robinson, Election (41.40), George Guderian, Assessor (125.00), Consolidated Freight Lines, County Court (1.53), D. C. Wax Office Equipment House, County Court (69.00), Domestic Laundry, Sheriff & Poor (1.65), West Coast Printing & Binding Co., offices (176.90), United States Pencil Co., Sheriff (19.25), The Freewater Times, Clerk (27.75), Dunlap Stationery, Recorder & Assessor (3.00), Dorothy W. Bell, Treasurer First National Bank of Portland, Pendleton Branch, Treasurer (8.25), Burroughs Adding Mach. Co., Treasurer (5.55), E. E. Walden, Assessor (169.80), R. T. Gilliland, Assessor (90.00), D. W. Davis, Assessor (13.08), O. F. Steele, Assessor (103.20), Pac. Power & Light Co., Court House (110.59), Fell's Dry Cleaning Co., Poor Farm (2.00), J. L. Eldridge, Poor Farm Superintendent (374.46), Pendleton Drug Co., Poor Farm (5.32), J. C. Penney Co., Poor Farm (4.15), Tallman & Co., Poor Farm (5.70), Pac. Power & Light Co., Poor Farm (20.40), The Taylor Hdwe. Co., Poor Farm (4.82), Lowell Cheaver, Watermaster (102.18), F. M. Caverhill, Watermaster (139.82), W. C. Mason, Watermaster (159.29), W. L. Woodward, Election (3.50), Hermiston Hotel, Election (5.00), Edgar L. Norvell, Election (2.00), City of Helix, Election (2.50), H. A. Pankow, Election (11.00), State Line Grange, Election (5.00), J. A. Stephens, Election (7.25), Community Hall, Election (5.00), Velma McKown, Election (2.50), Mrs. A. M. Ross, Election (7.50), Jesse Gossage, Election (2.50), W. E. Saylor, Election (8.00), Will R. McLean, Election (2.00), E. B. Casteel, Election (3.00), V. Stroble Furniture Co., Election (18.00), W. L. Hamm, Ind. Soldiers (43.49), State Dept. of Agriculture, Sealer of Weights (30.58), Employment Donation Fund, Dist. No. 8, State Empl. Service (57.00), Pendleton Water Commission, Court House (51.15), Dr. A. B. Adkisson, Emerg. (3.00), D. C. Wax Office Equip. House, Co. Court (4.61), Hermiston Herald, Co. Court (21.45), Lillian Nooy, Sheriff (82.80), Larsen Printing Co., offices (46.75), R. E. Goad, Sheriff & Jail (276.91), Louis M. Colcord, Sheriff (4.00), B. D. Smith, Sheriff and Court H. Election (87.65), State Ind. Acc. Comm., Sheriff (18.88), Western Union, Sheriff and Election (3.09), J. T. Arneson Printing Co., Recorder (5.25), Gadwa's Store, Assessor (2.20), Valley Printing Co., School Supt. (20.51), Pendleton Drug Co., Poor (9.05), J. N. Allen Supply Co., Court House (5.95)

Table listing various claims and amounts, including W. J. Clarke, Court House (15.15), Vaughn's Electric, Court House (3.41), Ind. City Scavenger, Court House (3.00), Smythe-Barthel Co., Court House (7.45), Jones-Kay Co., Court House (1.48), Glenn's Pharmacy, Jail (7.00), J. C. Penney Co., Jail (3.00), Koepfens, Jail (6.99), Penland Brothers, Elec. & Emerg. (36.78), Pendleton Hotel, Election (15.00), Bowman Hotel, Election (15.00), Mrs. Agnes Stillman, Elect. (10.00), Mrs. Celestine King, Elect. (10.00), Women's Community Club, Election (5.00), Dr. A. H. MacLaren, Health Unit (64.98), Elma Duhan Whipple, Health Unit (33.80), Marjory Bohart, Health Unit (42.75), Marion G. Allen, Health Unit (31.30), W. L. Hamm, Ind. Sold. (55.00), T. M. Birkbeck, Ind. Sold. (26.20), Hamley & Co., Emerg. (5.00), F. C. McKenzie, Lib. and Emerg. (121.60), C. C. Proebstel, Ind. Sold. (63.00), Dr. J. A. Best, Poor (5.53), G. B. Gantz, Poor (32.50), East Oregonian, offices and Election (520.92), E. B. Casteel, offices (Postage) (20.50), W. Elliott, Judge, Clerk (3.90), Oregon Lumber Yard, Assessor, Court H., Jail and Election (62.05), L. G. Frazier, offices (35.25), Alta Joerges, Election (18.00), Kim Morton, Election (10.00), Ada Brown, Election (10.00), Nina Sloan, Election (10.00), Pac. Tel. Co., General Road (16.30), Signal Oil Co., General Road (561.51), Eric Schroeder, General Road (80.00), Harvester Supply Co., General Road (93.95), R. B. Goodin, General Road (331.78), Pendleton Water Commission, General Road (1.60), Akers Service Station, General Road (3.00), Associated Oil Co., General Road (109.95), Bureau of Labor, General Road (5.00), Brinkers Brothers, General Road (79.80), H. G. Beckius, General Road (2.25), Braden-Bell Tractor Co., General Road (15.18), Consolidated Freight Lines, General Road (76.64), Columbia Equipment Co., General Road (492.76), W. J. Clarke, General Road (118.63), Central Welding Works, General Road (4.89), Comrie Motors, General Road (3.01), Collier Motor Co., General

Table listing various claims and amounts, including Road (35.33), Mrs. Pat Doherty, General Road (30.90), Archie Demaris, General Road (8.00), Fletcher Oil Co., General Road (1,677.63), Foster Motor Co., General Road (79.54), Feenaughty Mach. Co., General Road (165.24), Fairbanks Morse & Co., General Road (25.61), L. G. Frazier, General Road (1.90), Funk & McLean, General Road (75.00), Green Grocery, General Road (1.80), Sam Gorfick, General Road (8.70), B. F. Goodrich Co., General Road (105.97), Howard Cooper Corp., General Road (80.29), Holmes & Oliver, General Road (553.75), A. C. Haag & Co., General Road (66.18), Isaacson Iron Works, General Road (4.50), Jackson Implement Co., General Road (147.20), Jack Allen Supply, General Road (397.26), Leopold Volpel & Co., General Road (20.11), Glen Long, General Road (20.75), Milton Hardware Co., General Road (20.73), Oregon Motor Service, General Road (121.45), Oregon Hardware Co., General Road (4.00), Olsen King, Inc., General Road (1.12), Oregon Hide & Junk Co., General Road (25.00), J. E. Olinger & Sons, General Road (56.04), Pendleton Drug Co., General Road (4.25), Penland Brothers, General Road (51.04), Pac. Power & Light Co., General Road (23.69), Pac. Mach. & Tool Steel Co., General Road (16.34), Price Ransom Chev. Co., General Road (36.95), Perkins Motor Co., General Road (55.62), Richfield Oil Co., General Road (33.92), Robertson Heavy Hardware Co., General Road (35.86), Heimer's Garage, General Road (2.20), Standard Oil Co., General Road (268.33), Simpson Auto Electric Serv., General Road (5.97), State Ind. Acc. Comm., General Road (213.46), The Texas Co., General Road (1.17), The Taylor Hardware Co., General Road (153.78), The Texas Co., General Road (32.76), Union Oil Co., General Road (355.43)

Table listing various claims and amounts, including Van Petten Lumber Co., General Road (8.00), Western Road Mach. Co., General Road (114.66), Claude Key, General Road (75.00), General Petroleum Corp., General Road (33.92), Hamley & Co., General Road (1.25), David Horne, General Road (37.50), Larson Printing Co., General Road (43.75), Tum-A-Lum Lumber Co., Freewater, General Road (1.65), The Texas Co., General Road (3.37), Pac. Tel. Co., General Road (20.93), Lyle Potter, General Road (25.00), Al Moody, General Road (137.26), John Barnes, General Road (150.87), John Hodgins, General Road (57.97), Chas. Reimann, General Road (92.21), Roy Mathoney, General Road (95.02), A. J. Sturtevant, General Road (83.20), Elmer Wehner, General Road (56.94), Joe Picard, General Road (121.26), C. H. Wheeler, General Road (96.44), Gail Alspach, General Road (74.82), Roy Brown, General Road (85.91), F. B. Hayes, General Road (145.55), R. J. Wheeler, General Road (132.89), Tommy Bond, General Road (149.69), Chas. Williams, General Road (116.37), C. Hutson, General Road (23.49), Lyle Potter, General Road (132.70), L. Wolf, General Road (74.90), Dode Farrell, General Road (94.57), John Eichner, General Road (104.46), Dick Bush, General Road (99.69), Walter Kramer, General Road (93.20), L. Shockey, General Road (91.20), E. C. Myrick, General Road (99.69), L. McIntyre, General Road (109.29), L. G. Fullerton, General Road (153.33), Ralph Moody, General Road (78.75), Percy Sweet, General Road (95.82), Leroy Lewis, General Road (68.46), A. L. Warnock, General Road (87.50), E. L. Stephens, General

Table listing various claims and amounts, including Road Payroll (88.74), S. P. Westervelt, General Road Payroll (75.06), H. Magruder, General Road Payroll (94.64), John Henry, General Road Payroll (61.74), Walt Picard, General Road Payroll (112.39), Cecil Sams, General Road Payroll (64.36), Stanley Floyd, General Road Payroll (11.85), Rome Kemp, General Road Payroll (86.71), D. Fullerton, General Road Payroll (120.96), Earl Newquist, General Road Payroll (74.60), F. T. Burke, General Road Payroll (78.96), H. Schuging, General Road Payroll (82.60), Frank Krebs, General Road Payroll (83.93), R. R. Bond, General Road Payroll (27.57), F. M. Henson, General Road Payroll (90.09), S. Fullerton, General Road Payroll (154.31), H. M. Bennett, General Road Payroll (113.17), Herb Caldwell, General Road Payroll (111.20), E. H. Hargett, General Road Payroll (120.49), C. O. Pederson, General Road Payroll (121.93), Cliff McDonald, General Road Payroll (117.33), Jack English, General Road Payroll (88.25), F. L. Hodgen, General Road Payroll (75.96), John Byrne, General Road Payroll (65.59), L. Hoefft, General Road Payroll (80.15), Edward Tester, General Road Payroll (26.73), Steve Borich, General Road Payroll (46.10), Wm. Powers, General Road Payroll (46.15), Dale Erwin, General Road Payroll (22.68), Thos. Cuney, General Road Payroll (46.15), Laurel Bouchard, General Road Payroll (12.96), R. E. Wheeler, General Road Payroll (23.47), W. F. Brown, General Road Payroll (184.69), Neil Devore, General Road Payroll (106.27), Henry Forth, General Road Payroll (5.74), E. S. Fox, General Road Payroll (96.45), H. Alderman, General Road Payroll (22.63), Tom Bond, Jr., General Road Payroll (6.48), Frank Taylor, General Road Payroll (98.79)

Crossing the Santiam Pass

The Motorloggers Check Up on Road Conditions and Facilities for Recreation East of Salem

This newspaper is co-operating with The Oregonian and the Oregon State Motor Association in presenting a series of motorloggers designed to stimulate travel in Oregon and the Pacific northwest. This article has been condensed from a full page article to appear in The Oregonian July 3.

UNCLE SAM'S road builders are gradually tying together the last links of the new North Santiam and South Santiam highways, fast motor roads over the middle Cascade range, designed to clip 50 miles from the motoring distances between Willamette valley cities and the sparkling lakes and colorful plateaus of central Oregon.

This summer, for the first time, motorists are already driving the entire distance of the North Santiam highway on the new permanent grade. They encounter clouds of dust, busy road-building machinery and bumpiness of rough grading, but these inconveniences are considered minor to the average motoring Oregonian, who thrills in the exploration of new highways, new mountains, new rivers and new lakes.

The new North Santiam highway starts at Detroit, 60 miles east of Salem and Albany, and rises with easy grades and sweeping curves up the North Santiam river valley 32 miles to its junction with the South Santiam highway at Little Nash junction. The South Santiam highway starts its mountain climb near Cascadia, 45 miles southeast of Albany, and rises 35 miles up the Santiam river to the junction at Little Nash. From that point the combined highway sweeps up the west slope of the mountains to Hogg pass, dips

over and drops down beside sparkling Suttle lake and the tall pines of the upper Metolius. But the South Santiam highway is not yet opened to traffic. A section of several miles about midway between Cascadia and Little Nash is to be built this summer, and the entire grade, although unsurfaced, will be opened for the public next summer. Meanwhile, Oregon's unstopable exploring motorists will use the summer detour road through the timber.

Little has been published about these two new roads, because the United States bureau of public roads does not wish to encourage travel upon uncompleted highways. "There is always the inconvenience, discomfort and danger of driving in clouds of dust, which heavy traffic stirs up on ungraded roads," explained H. D. Farmer, senior highway engineer in charge of forest highways in Oregon. "Persons driving in dust face the danger of head-on collisions or of running off the road."

So the North Santiam highway is not yet being recommended as a travel artery for the general public.

Wide as Portland's Broadway, the new grade lacks much of man's finishing touch. Ten miles of it were oiled during the last two weeks, while about 16 miles between Detroit and Marion Forks are scheduled for surfacing and oiling late this year and early next.

The South Santiam route over Hogg pass has long been designated by the bureau of public roads, the forest service and state highway commission as a future commercial route over the mountains, but the North Santiam



Fishing on Square lake, one mile north of Santiam Highway at Hogg pass summit, is done usually from rafts like this one

route was not officially "discovered" until 1828, three years after a narrow, one-way road with turnouts was constructed from Niagara, eight miles above Mill City, to Detroit, to serve people who previously had only a logging railroad for their connection with the outside world.

Begun in 1931 As soon as the preliminary investigation of the route was made, the North Santiam was added to the state system, and construction was started in 1931. From that year to this the federal government has allotted about \$100,000 annually for construction, adding three to ten miles of grade each year, and now and then a bridge or two.

With the completion of the last bridge over the river this month, the North Santiam grade will be entirely completed and the last detour above Detroit will be eliminated.

But there still remains the 25-mile bottleneck below Detroit, the narrow, one-way dusty road chiseled out of the rocky slopes of North Santiam canyon 13 years ago. The United States bureau of public roads contemplates replacing this within a few years with a wide, smooth, well-graded highway, but this project must wait until the United States engineers definitely decide upon the location and height of a dam they propose to erect in the canyon below Detroit as a part of the Willamette valley project. If the dam is high, it will force the highway to an expensive and difficult location high up the canyon side.

Advantages of the Santiam road route are confined largely to reduced distances and driving times as compared with other routes. From Portland, Bend is virtually as far by this route as by the Wapinitia road, but Suttle lake and the Metolius resorts are brought 55 miles closer to

Portland via a paved short cut through Woodburn, Silverton, Stayton and Detroit.

The distance between Salem and Bend is now only 140 miles via the North Santiam route, compared with 190 miles via Eugene and the McKenzie highway.

Highway engineers expect the Hogg pass route will be more readily kept clear of winter snow than the McKenzie pass. They experimented with snow clearing on the new route during the first half of last winter and found the job not difficult. They learned, however, that danger of snow slides at Hogg rock made the construction of retards at that point desirable, with the result that such work is scheduled for this season.

Rivers Scenic Streams The Santiam route is attractive, too, for a scenic and touring standpoint. Both the North and South Santiam rivers are scenic streams, rushing down from the mountains through deep canyons of rock and timber.

As the joint highway climbs over the summit, fine views of Mount Washington, the Three Sisters and Three-Fingered Jack are played before the motorist in an endless panorama.

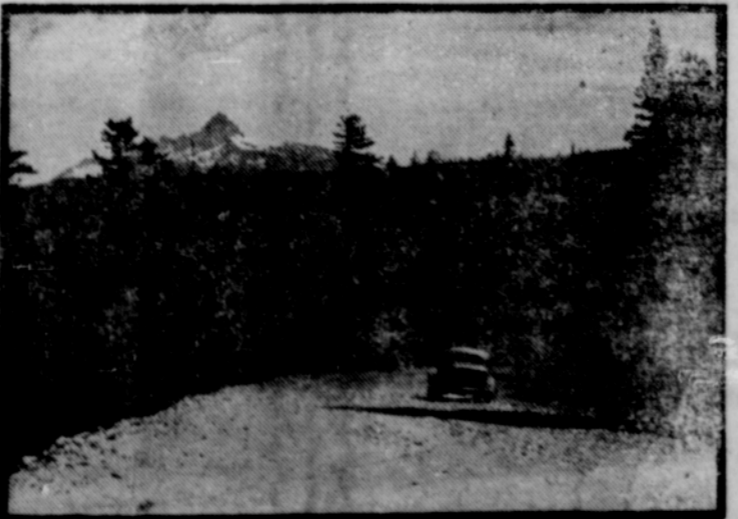
Dropping down the eastern slope, the motorist gets a striking view of Blue lake and Suttle lake, surrounded by deep pine timber far below. The road passes the entrance to the Suttle Lake lodge and forest recreation area at the eastern end of the lake. Two side roads passed in this vicinity lead direct to the Metolius resorts, Camp Sherman and the springs from which Metolius river is born.

Beyond is Sisters, where the Santiam and McKenzie highways join, and where the road to Redmond, Prineville, Mitchell and northeastern Oregon separates from the highway to Bend, the upper Deschutes valley and southeastern Oregon.

Keeps Cool With Coffee



This is National Ice Coffee week, and beautiful Barbara Johnson, "Miss Oregon" and the state's official representative of the Golden Gate International exposition, invites you to cool off with a long, fall drink, in honor of the event.



The new highway grade is as wide as Portland's Broadway, with sweeping curves and easy grades. Three-fingered Jack in distance