

The Hermiston Herald

Published every Thursday at Hermiston, Umatilla County, Oregon, by Pauline M. Stoop and Alfred Quiring, Publishers.

Entered as Second Class Matter December, 1906, Umatilla County, Oregon.



Subscription Rates.

One Year \$2.00
Six Months 1.00
Three Months .50

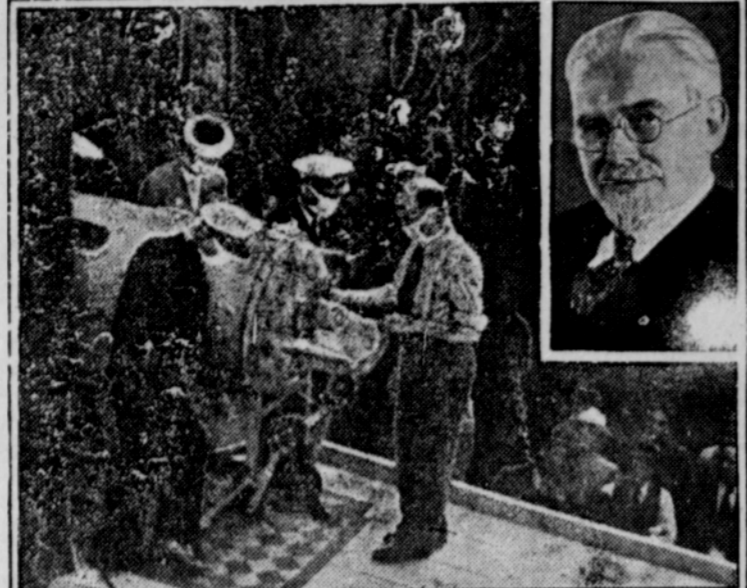
Fairs are not only to show what we are doing and what we have but are also gala events and get together meetings where everybody may meet everybody else in a pleasant mood, and in a common pride.

The Silver Jubilee fair is gaining momentum daily. The board and all superintendents are busy taking care of their duties. Livestock is in good condition and the quality of such exhibits will be the best yet shown.



at The Hermiston Herald.

Science Battles Infantile Paralysis.



NEW YORK, N. Y.—As humanitarians of two continents cheer one of the most dramatic fights medical science ever has waged to preserve a life—the case of Frederick B. Snite, Jr., infantile paralysis victim who faces seven years in an iron lung—hope that the long battle for control of the disease may be nearing success is expressed by those engaged in research.

Jenny Lind's Grave
Jenny Lind, the Swedish nightingale, is buried in Malvern, England.

Red Coral Always Prized
It is red coral that is and always has been prized, not solely for jewelry and buttons, but as a charm to bring safety, health and secrets not revealed to the ordinary person.

A. C. McIntyre, district attorney for Umatilla county, was a business visitor in Hermiston Wednesday. He recently returned from Oakland, Calif., where he attended the International Law Enforcement convention.

Tracy Manly, pastor of the Baptist church for the summer, returned Friday night from two weeks at the Baptist Summer Assembly held at Cascade, Oregon.

Miss Mary Petri arrived Wednesday morning from Fulton, Missouri, to spend the day with Mrs. Georgia Henderson and other friends before going to Portland to visit until school opens the first of September.

A group of young people from the Hermiston Union church Christian Endeavor society returned Sunday from a week at Wallowa lake attending summer conference.

Mr. and Mrs. R. B. Wilcox left Wednesday of last week on a ten day motor trip which took them to Burns by way of Mt. Vernon, then to Klamath Falls and Crater lake. From there they motored over the Redwoods highway and up the Oregon coast to Coquille where they spent some time in the mountains.

Mrs. W. J. Cochran and daughter, who has been spending the summer with her mother, Mrs. Bert Mullins, plans to leave Saturday for her home at Silverton, Ore.

The Missionary Society of the Hermiston Union church met at the home of Mr. and Mrs. C. Warner Wednesday afternoon with Mrs. W. C. Morehouse as leader.

CHURCH NOTES
HERMISTON UNION CHURCH
C. Warner, Pastor.
Bible school, 10:00 A. M.

ALFALFA HAY GROWING GRAIN
THE HAY OR GRAIN IN YOUR FIELD TODAY MEANS MANY HUNDREDS OF DOLLARS IN YOUR POCKET WITHIN THE NEXT FEW WEEKS.

FIRST NATIONAL BANK OF HERMISTON
F. B. SWAYZE, President
Member Federal Deposit Insurance Corporation

Chas. Duvall, Superintendent
11:00 A. M., Sermon.
Christian Endeavor, 7:00 P. M.
8:00 P. M., Sermon.

CHRISTIAN SCIENCE CHURCHES
"SPIRIT" was the subject of the Lesson-Sermon in all Churches of Christ, Scientist, on Sunday, August 8.

The Golden Text was, "No man hath seen God at any time... Hereby know we that we dwell in him, and he in us, because he hath given us of his Spirit" (1 John 4:12, 13).

The Lesson-Sermon also included the following correlative passages from the Christian Science textbook, "Science and Health with Key to the Scriptures," by Mary Baker Eddy.

METHODIST CHURCH
R. R. Finkbeiner, Pastor
Sunday school at 10:00 A. M. Mrs. E. E. Rainwater, superintendent.

Ladies Aid services every first and third Wednesday.
Two new members were received into the Methodist church last Sunday in the persons of Miss Naomi Beletski and Mrs. Everett Rainwater.

R. R. Finkbeiner, pastor of the church, has been invited to serve on the faculty of the Grizzly-Blue Mountain Institute near Pomeroy, Wn., from the 16th to the 21st of August, and will leave Monday morning.

PILGRIM HOLINESS CHURCH
Lawson H. Flora, Pastor.
Regular Sunday services as follows:
Sunday School at 9:45 A. M.
Preaching at 11:00 A. M.

CHURCH OF CHRIST
Columbia School
10:00 A. M. Bible school.
11:00 A. M. Devotional service and communion.

STANFIELD PRESBYTERIAN CHURCH
Jesse K. Griffiths, Minister.
10:00 A. M.—Sunday school.
7:00 P. M.—Young People's meeting.
8:00 P. M.—Evening service.

FULL GOSPEL CHURCH
Miss Virginia Grice, Pastor
Sunday school at 10:00 A. M.
Morning worship at 11:00 o'clock.
Evening Service at 8:00 o'clock.
Communion and missionary service the first Sunday of every month.

HERMISTON TRADING CO. RED & WHITE STORE

- Fruit Cocktail Red & White 2 For 31c
Baked Beans Red & White - 28 oz. 2 For 35c
Brown Raisin Bread Red & White 15c
Brown Beauty Beans No. 300 Can 3 For 28c
Dill Pickles Red & White - 25 oz. 25c
Sandwich Spread Red & White Pints 25c
Milk Red & White - Tall 3 For 21c
Tomato Hot Sauce Blue & White 6 For 25c
Walla Hams Whole or Half LB. 33c
Breakfast Bacon Medium Slab Whole or Half Lb. 30c
Shoulder Veal Roast LB. 18c
Mutton Steak LB. 12 1/2c

Thanks Another Million

- OUR BUSINESS HAS SHOWN A HEALTHY INCREASE EACH WEEK.
COFFEE SHAW'S - In Glass Jar LB. 29c
VINEGAR PURE CIDER GAL. 19c
MUSTARD DRY LB. 29c
DILL WEED LOCAL Large Pkg. 5c
MILK TALL CANS 7c Small Cans 6 For 25c
PEAS - TOMATOES - CATSUP - LARGE OVAL SARDINES
20 OZ. PORK & BEANS - GRAPEFRUIT JUICE - IMPORTED SARDINES IN OLIVE OIL - LARGE CANS SALMON - PINEAPPLE - PREPARED MUSTARD - ETC. - ETC. - ETC.
10c EACH
TEA BLACK or GREEN 1/2 Lb. Pkg. 19c
ALL SPICES 2 OZ. CANS 3 For 25c
CORN FLAKES KELLOGG'S 3 Pkgs. 20c
TOMATO JUICE FULL 15 OZ. CANS 2 For 15c
FLY RIBBONS 8 For 13c

Connor's Cash Store
Smoked and Lunch Meats Groceries - Fruit & Vegetables
PHONE 301

Widening River of Taxes Deluges U. S. Motorists With Higher Cost

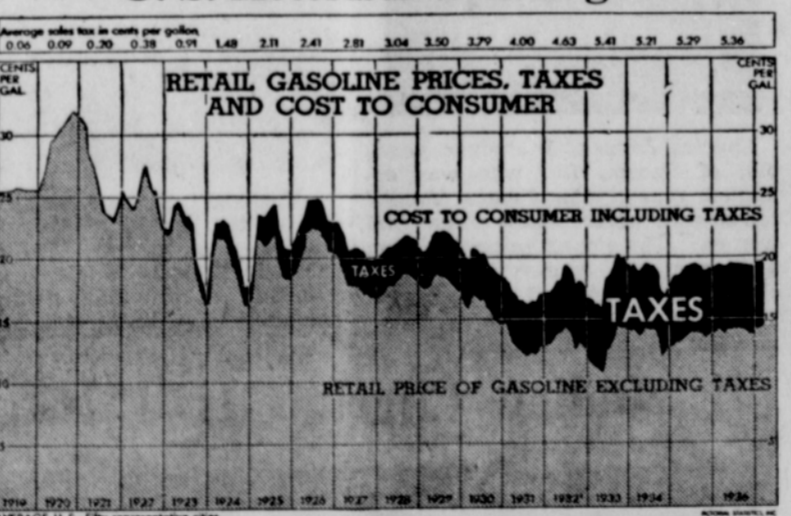


Chart shows how cost of gasoline taxes has increased since 1919, largely offsetting economies resulting from 50% reduction in gasoline prices.

Duplicating and hidden taxes, paid first to federal and then to state governments whenever and wherever gasoline is purchased, make a widening river of taxation deluging motorists with a higher cost.

Levied to finance highways, sales taxes on motor fuel cost only \$1,000,000 in 1919, or a few cents per motorist. In 1936 the cost was close to \$900,000,000, or over \$30 per motorist.

Despite the enormous increase in cost, proportionately less of the revenue is being used for highways. Millions of dollars are diverted to general purposes, thus causing neglect of roads and menacing public safety.

These levies, which constitute a retail sales tax sometimes exceeding 40%, highest ever levied on an essential commodity, make the mo-

SAVE at BOYNTON & KELLEY'S

- FLOUR
Vencedore Brand \$1.33
49 lb. Bag
An all purpose family flour.
LYE
Hooker Brand 25c
3 cans
BLACKBERRIES - PEACHES or CRUSHED PINEAPPLE
NO. 10 TIN 65c
Each
LIBBY'S ROAST BEEF
LARGE 12 oz. CANS
Fine for Slicing 19c
EACH
LOCAL CANTALOUPEs and WATERMELONS are Ice Cold In our window.
TOMATOES
BASKET 9c
BEEF ROAST
Young Steer Beef SAT. ONLY! Lb. 17c
SHORT RIB BEEF SAT. ONLY! LB. 11c
CUBE STEAK
EACH 5c
BACON
Walla Walla's LB. 29c