



Give
The 3 Million Dollar Phonograph
The NEW EDISON

"The Phonograph With a Soul"

Come to hear it at our store.

The supreme realism of the Official Laboratory Model has been proved by 4,000 comparison tests against the actual performances of living artists, before audiences totalling 4,000,000. The instruments used were exact duplicates of the Original Official Laboratory Model, to perfect which Mr. Edison spent three million dollars.

We guarantee the Official Laboratory Model we shall show you, to be capable of passing all these tests of the Direct Comparison.

Hermiston Drug Company
Hermiston, Oregon

Hermiston Pendleton

Geo. W. Elder Real Estate Agency

Acres near Hermiston, Stanfield and Pendleton. Farm land in Oregon, Washington and Idaho on easy payments, some on crop payments.

All kinds of Insurance and Loans

Oregon Hotel Building
J. M. BIGGS,
Manager Hermiston Office



Satin Egg Shell Finish

RECONSTRUCTION!

Now, while the world is doing its "house cleaning," is a good time to begin a "reconstruction period" at home.

Whichever room you start with you will find need for B-H Satin Egg Shell Finish. Although intended for walls and ceilings it makes a beautiful egg-shell enamel on woodwork too. The Kitchen—Library—Bedroom—Hallway or Bath can be made brighter, more attractive and easier to keep clean by a coat of B-H Satin Egg Shell finish—any one of twelve shades.

Be sure to think of Bass-Hueter when considering a painting job—whether a room or an entire house—inside or out.

Let us assist you in the proper choice of materials!

SAPPERS' INC.

Distributors for
BASS-HUETER PAINT COMPANY, San Francisco

NOTICE OF SCHOOL MEETING

Notice is hereby given to the legal voters of School District No. 14 of Umatilla County, State of Oregon, that a School Meeting of said district will be held at the School House on the 10th day of December, 1920, at 3:30 o'clock in the afternoon, to vote on the proposition of levying a special district tax.

The total amount of money needed by the district during the ensuing year is estimated in the following budget and includes the amounts to be received from the county school fund, state school fund, special district tax, and all other moneys of the district.

BUDGET

ESTIMATED EXPENDITURES

Teachers' salaries	\$19,135.00
Furniture	300.00
Apparatus and supplies, such as maps, chalk, erasers, stoves, curtains, etc.	400.00
Library books	100.00
Flags	25.00
Repairs of school houses, outbuildings or fences	1,000.00
Improving grounds	500.00
Transportation of pupils	2,070.00
Tuition of Pupils	
Janitor's wages	1,140.00
Janitor's supplies	200.00
Fuel	600.00
Light and power	350.00
Water	100.00
Clerk's salary and bond	145.00
Postage and Stationary	50.00
For the payment of bonded debt and interest thereon, issued under Sections 117, 144 to 148, and 422 of the School Laws of Oregon, 1917	2,580.00
Interest on Warrants	800.00
Printing and Notices	50.00
Insurance	120.00

Total estimated amount of money to be expended for all purposes during the year \$29,665.00

ESTIMATED RECEIPTS

From county school fund during the coming school year	7,700.00
From state school fund during the coming school year	650.00
Estimated amount to be received from all other sources during the coming school year	1,760.00
Total estimated receipts, not including the money to be received from the tax which it is proposed to vote	10,110.00

RECAPITULATION

Total estimated expenses for the year 29,665.00
Total estimated receipts, not including the tax to be voted 10,110.00
Balance, amount to be raised by the district tax 19,555.00

The amount of money to be raised by this special tax is more than the amount raised by special school district tax in the year immediately preceding this, plus six per cent. It is necessary to raise this additional amount by special levy for the following reasons:

All salaries have been advanced. There will be two or three more teachers required. All supplies have increased in price, and more improvements on building are needed.

Dated this 8th day of November, 1920.
F. B. Swayze
Chairman of Board of Directors
Attest R. A. Brownson,
District Clerk. 10-4tc

City Tax Estimates for 1921
Following is the estimate of the amount of money proposed to be raised by taxation by the City of Hermiston for the ensuing year beginning March 1st, 1921, together with the balances and other matters as required by chapter 234 of the laws of Oregon of 1913.

General Fund

City Recorder	\$ 600.00
City Attorney	180.00
Police	650.00
City Engineer	400.00
Health Officer	120.00
Street Lights	700.00
Election	50.00
Fire Department	300.00
Misc.	250.00
Taxation	\$3250.00

Water Fund

Supt. Salary	\$1380.00
Distalate	3250.00
Mdse.	350.00
Labor	220.00
Misc.	300.00
Int. on bonds	1500.00
Total	\$7000.00

Estimated receipts
Library
Library Fund by taxation \$ 500.00
Street Fund Tax 2500.00

Total \$3000.00
General Fund Total 3250.00

Grand Total by Taxation 6250.00
On November 29, 1920 at 10 a. m. the City Council will meet at the council chambers for the purpose of hearing discussions of said estimates by taxpayers and levying said assessments.

Mabel M. Jensen
City Recorder
10-2tc

In a Quandary.
"I say, I'm in a fix with my girl!" said young Dubbs disconsolately.
"Why?" replied his sympathetic friend, "what's the matter, my boy? Have a row?"
"No, it isn't that. You see, I've been saying so many nice things to her that she's getting conceited. I can't stop it, and I can't keep it up."
"Can't, eh? Why not?"
"Well, you see, if I kept on she'll begin to think she's too good for me, and if I stop she'll think I don't care for her any more."

Supplying Telephone Service

Occasionally subscribers move and ask us for a continuance of telephone service at their new location. They may be told that compliance with their desires is immediately impossible owing to lack of "telephone facilities" in a particular locality. "Why," one will say, "the poles and wire are on the street and the house is already wired."

We wish that the problem were as simple as it sounds. There may be poles and wires, but every wire may be in use in giving service to others. There may be a cable, but every circuit in it may be assigned to telephones already installed. There may be a telephone in the vacant house or apartment to which you move but no spare wires and circuits from your location to the central office. There may even be sections of switchboards in the central office but not available for operation on account of the lack of necessary switchboard apparatus such as ringing keys, relays, etc.

The reason for the shortage for the telephone equipment is simple. During the war period we were unable to maintain our reserve or stock plant as the same materials we use were required and taken for government purposes and for industries favored by the government. Since the war, with the unexpectedly prolonged problems of reconstruction, production and delivery of materials needed to meet even current demands have been delayed. Every business concern is having similar experiences. The manufacturers of telephone equipment have been bending every effort to fill our orders, but they, in turn, are meeting the same difficulties in securing rubber, paper, silk, glass, porcelain, tin, thread, shellac, metal parts and other articles not generally associated in the public mind with telephone service.

At the same time with this abnormal situation with reference to materials there exists an unprecedented demand for telephone service, and even under these circumstances our record is one of fulfillment of demand.

In the first nine months of 1920 we made a total net gain of over 7300 telephones in the State of Oregon. A fact worthy of consideration in our operations in the large number of telephones handled in proportion to net increase. In those nine months we disconnected, connected and moved 41,140 instruments to secure the net gain above mentioned.

We desire to give service as much as a patron wishes to receive it. We desire to promptly comply with the suggestions of public authorities who have taken a proper interest in the situation. We are facing abnormal conditions but we are trying to overcome our difficulties.

The Pacific Telephone and Telegraph Company

DELCO-LIGHT
A New Model
\$4.85



A 3/4 kilowatt DELCO-LIGHT at a greatly reduced price is offered to you. This plant generates plenty of electricity for the average requirements of the farm home, for abundant electric light, power for pumping water and for running the machines ordinarily turned by hand.

Only \$485 f.o.b. Seattle, Spokane, Portland, Butte or Pocatello.

There are larger DELCO-LIGHT models for larger requirements—at prices lower than those paid for former models of the same capacities. All DELCO-LIGHT models have the same unexcelled mechanical features. They are self-venting, self-stopping, air-cooled, have only one place to oil, and are equipped with thick plate, long-lived battery.

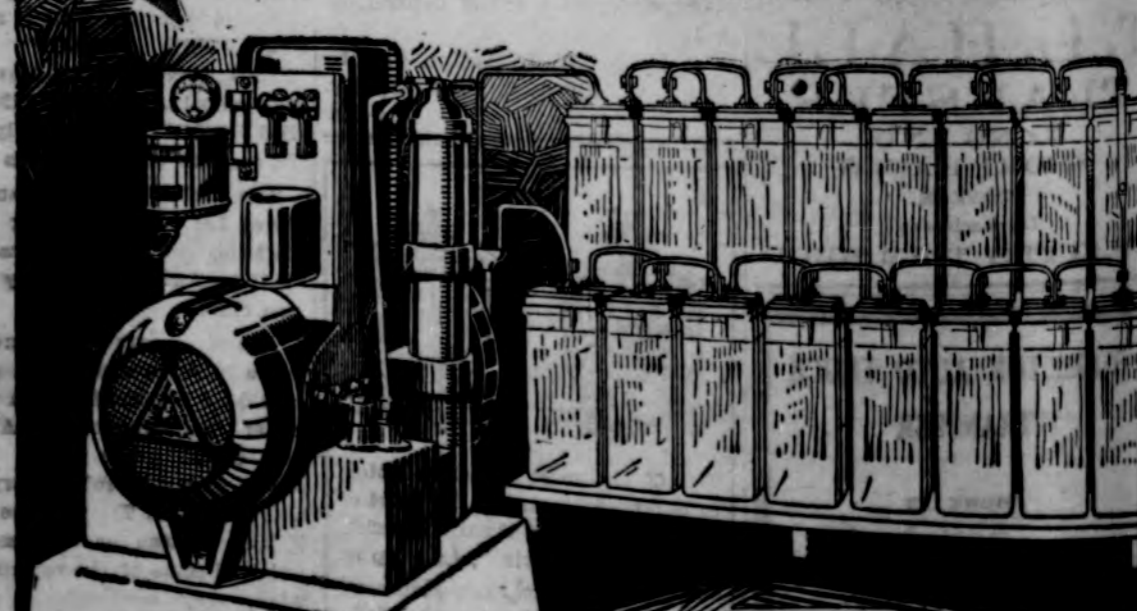
No matter where you live, there is a satisfied user near you, enjoying the comforts, conveniences and labor-saving features of DELCO-LIGHT. Over 125,000 plants in daily usage are your assurance of the continued satisfactory and economical service of all DELCO-LIGHT models. There is a size DELCO-LIGHT to meet your needs.

Write, phone or call for detailed information

F. T. BAKER
PENDLETON

Box 281

Phone 658-M



There's a Satisfied User Near You

Timely Farm Hints

Pruning may be started as soon as the leaves have fallen in western Ore. The trees are dormant at this time and may be safely pruned. In eastern Oregon the pruning may not be done safely until late winter or early spring on account of the cold.—Horticultural, O. A. C.

Potatoes are best when allowed to lie in the ground for 2 or 3 weeks after growing has ceased. This gives them a chance to mature.—Farm Crops, O. A. C.

Nursery stock should be carefully examined for disease before planting. Special care should be taken to see that no borers have entered the roots

or stems of the plant. Many and serious pests have been introduced through lack of inspection of nursery stock by buyers.—Entomology, O. A. C.

Advertise in the Herald. Send the Herald to your...