

# DOES SAVING MONEY APPEAL TO YOU?

We are helping lower the high cost of living by giving you cash prices on our merchandise and saving you all the way from 7 to 10 per cent interest on your money.

## Look at these Prices--They are \$ Savers

Corn Flakes, package	12c	Peanut Butter, lb., bring pail	24c
Post Toasties, package	14c	4 Bars Goblin Toilet Soap	25c
7 Bars Crystal Soap	49c	Gasoline, gallon	30c
Citrus Powder, package	32c	Coal Oil, gallon	20c
Gasoline, bbl. lots <small>When we can get it</small>	27 1-2c	First class Coffee, pound	39c
Two Bars Good Toilet Soap	15c	5 Pound Pail Lard	\$1.48
All Chewing Tobacco, pound	89c	Stock Salt	55c

**Fresh Fruits**      **Gooseberries, 9c per lb.**      **Fresh Vegetables**  
 Peas, Cucumbers, Tomatoes, Strawberries, Lettuce, Apples, Cocoanuts, Bananas,  
 Carrots, Beets, Turnips, Green Onions.

Bring in Your Harvest Order and Let Us Figure for Your business

## ECONOMY CASH STORE

**TWO STORES**      **WHERE CASH BEATS CREDIT**      **TWO STORES**  
 Echo -- Hermiston

Our Motto: Quick Sales, Small Profits      We Help Lower the High Cost of Living

### Americanization Work in Detroit

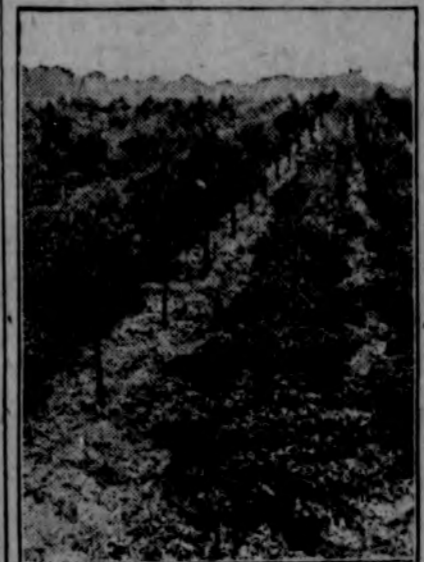


Making Americans is one of the leading industries promoted by the religious awakening in the nation. Superintendent Gless of the City Mission Society of Detroit, here shown with some Roumanians, is representative of the thousands of workers the Northern Baptists have put into the field to reach the foreign-speaking elements in the metropolitan centers.

### LIFE OF GOOSEBERRY PLANTS

Length of Productiveness of Plantation Depends on Soil and Attention Given.

(Prepared by the United States Department of Agriculture.)  
 If a currant or gooseberry plantation is properly cared for, at least 8 to 10 crops may be expected before it becomes unprofitable because of its age.



Bush Fruit Growing Between Trees in Newly Set Orchard.

Productive fields over 20 years old are not uncommon in some sections. Although the number of years a plantation will continue in good bearing condition depends to some extent upon location and soil, the most important factor is the care which it receives. The period of productiveness of both currant and gooseberry plants is longer in northern regions than toward the

southern limits of their culture and longer on heavy soil than on sandy soil.

### BUSH FRUITS NEED TRIMMING

All Dead and Unthrifty Canes of Raspberry and Blackberry Should Be Cut Away.

Some nice day put on a pair of long-wristed leather gloves and trim the raspberries and blackberries. Cut out all dead or unthrifty canes entirely, and prune back the others (including side branches) about one-third. Burn the trimmings and thus get rid of disease and pests.

### DEAL ONLY WITH DAIRYMEN

Not Safe to Buy Dairy Animals at Stock Yards—Calves, Physically Unfit, May Result.

In buying dairy animals it is important to deal only with dairymen. Do not buy from men who purchase calves at stock yards to ship back to the farmers, because it is not always possible to determine the breeding of the calves; and calves that are physically unfit may be shipped.

It takes a lifetime to raise a laugh in the oil regions.

The most difficult thing for an artist to draw is a salary.

More failures are due to lack of will than lack of strength.

A baby before it is christened is an anonymous contribution.

There's always room at the top—but few men care to dwell in an attic.



### A busy man's automobile—

may become shabby from sheer lack of time to have it done over. You need the car daily and you can hardly afford to be without it for the length of time ordinarily thought necessary for repainting.

If this is your problem, B-H Superior Automobile Enamel will solve it.

Paint your car right at home—let it dry while you sleep—drive it to town in the morning! B-H Superior Automobile Enamel dries thoroughly in from three to five hours.

See your friends open their eyes at the glossy, durable finish—the new-looking appearance of a factory job.



### Automobile Enamel

Distributors:

SAPPERS' INC.

### Alfalfa Lands For Sale!!

- 80 Acres of alfalfa land, 48 acres now producing alfalfa. All tools and equipment go with this place at a bargain, \$12,500.
- 40 Acres of alfalfa land unimproved. A splendid buy at \$5,000.
- 40 Acres of alfalfa land, 14 acres in alfalfa. Small farm tools go with place. Good house and barn. \$4,000.
- 20 Acres unimproved alfalfa land, \$2,500.
- 66 Acres alfalfa land, 18 acres in alfalfa good house and barn, \$6000
- 100 Acres alfalfa land, 4 1/2 acres irrigable, 18 acres now in alfalfa. Everything goes with the place.

COME AND LET US SELL YOU A HOME. EASY TERMS

### W. N. HATCH

REAL ESTATE  
 Boardman, Oregon

We are Compelled to Announce that

On and After July 1, 1920, The Hermiston Herald will raise the subscription price to \$2.00 a year.

Subscribe this month and save 50c

NOW \$1.50

T. L. HALL  
 TRANSFER  
 LONG AND  
 SHORT HAULS

J. L. VAUGHAN  
 ELECTRIC FIXTURES  
 AND APPLIANCES

203 E. Court St. Pendleton, Ore.  
 Phone 139

ELLIOTT'S TIRE SHOP

Subscribe for The Herald.