

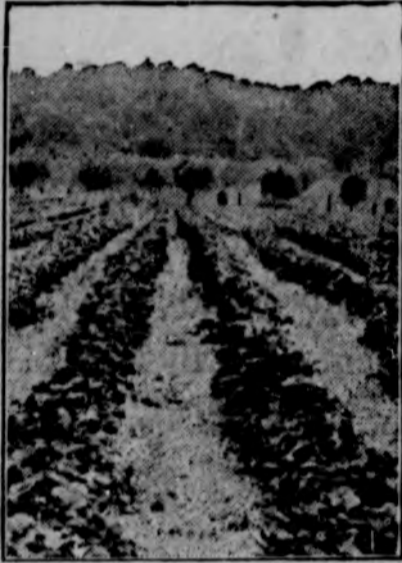
ORCHARD TOPICS

POLLEN IS QUITE ESSENTIAL

Variety of Strawberries With Perfect Flowers Can Produce Fruit Planted by Itself.

(Prepared by the United States Department of Agriculture.)

Two types of flowers, imperfect or pistillate, and perfect or staminate, are produced by different strawberry varieties. Imperfect flowers contain pistils but no stamens, while perfect flowers contain both. Pollen which is produced in the stamens is essential to the setting of fruit. A variety with perfect flowers, therefore, can produce fruit when planted by itself, but one with imperfect flowers cannot set fruit unless perfect-flowering plants are near to furnish pollen through the



With the Hedgerow System, Here Illustrated, More Berries Are Produced Than by the Hill System.

agency of bees or other insects. Where imperfect varieties are used the usual practice in planting is to set one row of a perfect variety for every two or three rows of an imperfect one.

New varieties are being constantly introduced to the trade, but according to the bulletin, few of them possess any special value as compared with others already more or less well known, and most of them soon disappear from the nurseryman's list, or, at least, remain of only local importance.

HOW TO GRAFT APPLE TREES

First Thing to Do is to Secure Young Trees About Size of Pencil—Any Time in Winter.

To graft apple trees the first thing to do is to have young trees a little larger than a pencil. Any kind of apple seed will do to plant to grow these trees, which should be planted during the fall.

Any time until the 15th of March, these trees can be grafted. Cut the little trees off about six inches above the ground, pulling the knife upward and making a smooth slope or slant about one and one-half inches long. Split straight down the pith for about an inch. Then take a limb of the current year's growth from any tree of a good variety, and cut just reverse of the above, so that the two pieces will fit together. It would take a picture to show exactly how this is done. Wrap this well with grass or wax cord. In two years the trees are ready to plant in the orchard.

NATIVES OF COOL CLIMATES

Currants and Gooseberries Are Not Adapted to Long, Hot Summers of Southern States.

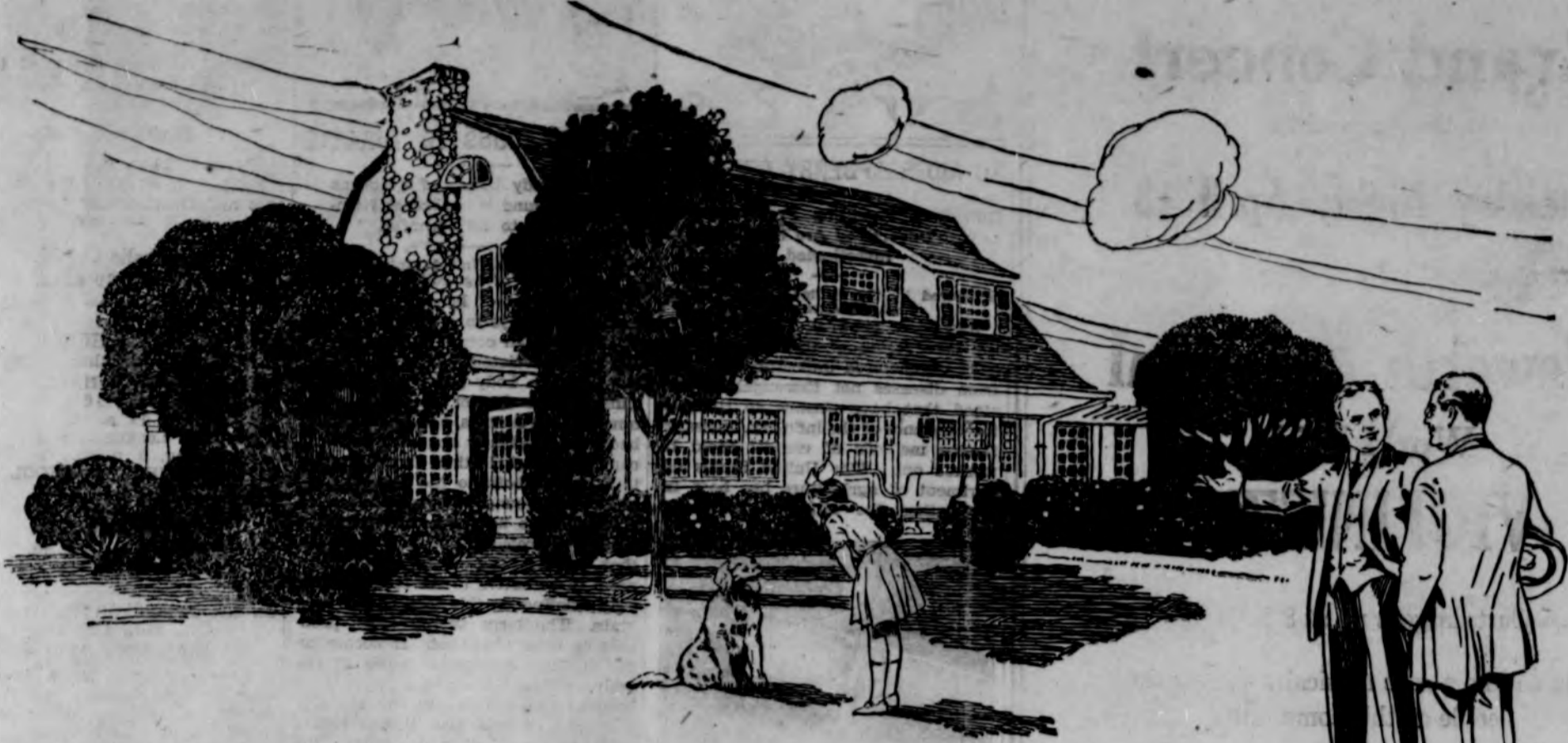
(Prepared by the United States Department of Agriculture.)

Both currants and gooseberries are natives of cool, moist northern climates and in the United States succeed best in the northern half of the country and east of the one hundredth meridian. They are injured by the long, hot summers of the southern states, except in the higher altitudes of the Appalachian mountains. Even in Missouri and Kansas they do not succeed very well. They are not adapted to the hot interior valleys of California, but are grown in the northern coast counties of that state.

SMALL FRUITS NEED MULCH

Any of Ordinary Materials Are Good for Raspberries, Blackberries and Currants.

Any of the customary mulching materials are good for small fruits like raspberries, blackberries and currants. These are shallow rooters and the ground around them should be mulched for the winter. Strawberries should also be mulched but care must be exercised that the manure does not come in contact with the crown of the plant. If the weather is very severe and the plants very exposed it is not a bad idea to lay down raspberries and blackberries and cover them.



"My Home"

He's pretty proud, that friend of yours, as he shows you through his new home and about the grounds, isn't he?

He takes you through every room and shows you each nook and cranny. Asks if that cosy den of his isn't a "dandy" and if the wife's sewing room isn't "pretty fine." Shows you the kiddies' playroom and tells you it's "the best thing in the world to keep the youngsters off the streets."

He explains that the entire house was built exactly as he and his wife had planned it—that the designing and decorating were done according to their own tastes and the rooms laid out to meet their own wishes and requirements.

He takes you about the grounds and shows you the fenced-in yard where the little ones can play to their heart's content. He tells you to sniff the roses in his wife's little flower garden and proudly exhibits a few feet of garden plot where he has planted some of their favorite vegetables.

He's pretty happy, isn't he? And his voice just rings with the pride of ownership as he smiles on it all and says "My Home!" And then you realize as never before what the poet meant when he wrote the words, "Home, Sweet Home."

And as you turn to go back to your rented house you're a little envious of your friend, aren't you, and just a bit ashamed of your own inactivity? There is no reason in all the world why you can't have a home of your own—a home built as you've always dreamed a home should be—a home you've planned and designed and decorated—which is exactly in accordance with the wishes and needs of your family.

Do you know that it does not cost any more to build than to rent? Practically the same amount of money you pay out each month for rent—or even less—will build you a home and entirely pay for it. Where is the sense in paying for the privilege of living in a home when you could just as easily own that home?

Build now! Nothing is to be gained by waiting. Authorities concede that building costs today are somewhat above normal, but they also state that costs cannot be lower until some future time as yet unforeseen. As against this, rents are higher today than ever before, so you are actually losing money every day you delay.

For any information you may desire on any subject pertaining to locations, plans, materials, finishings, furnishings, equipments, costs, information concerning architects, contractors, etc.—call at the Building Information Office. Not a thing to sell but a great deal to give away!



Tum-A-Lum Lumber Company

Designers and Materialers of Homes and Farm Buildings

R. A. BROWNSON, MANAGER

Hermiston, Oregon