

CITY IRRIGATION WATER ASSESSMENT FOR 1920.

Notice is hereby given that, in accordance with Ordinance No. 76 of the City of Hermiston, entitled, "An ordinance to create an irrigation assessment district in the City of Hermiston and to provide for the levy and collection of a special improvement assessment therein to pay for the cost of construction of the irrigation system, maintenance and water, and re-appealing ordinance No. 42," an assessment has been levied upon the following lots and parcels of land in the irrigation district established by said ordinance for the purpose of collecting a special improvement assessment to pay the cost of water for irrigation for the NW 1/4 of the SW 1/4 of section 11 and the NE 1/4 of the SE 1/4 of section 10, both in township 4 N. R. 23 E. W. M. block of the First addition to Hermiston, lots 6, 7 and 10 in block 2 of the Second addition to Hermiston, lots 6, 7, 8, 9 and 10 in block F of the Second addition to Hermiston, and block G of the Second addition to Hermiston, and block H of the Second addition to Hermiston, the land embraced in the irrigation assessment district provided for in said ordinance, and for constructing and maintaining an irrigation system therefor in the amount set forth below.

The total amount of assessment in said irrigation district is \$1,175.00.

The contract price to be paid the United States government for water for irrigation in said district is \$1.50 per acre for two acre feet and 50 cents per acre foot for all water in excess of two acre feet.

The cost of operation and maintenance of said irrigation district is established at \$1,175.00.

The assessment shall become due and payable March 31, 1920, and if not paid by April 15, 1920, shall become delinquent and bear interest from said date at the legal rate.

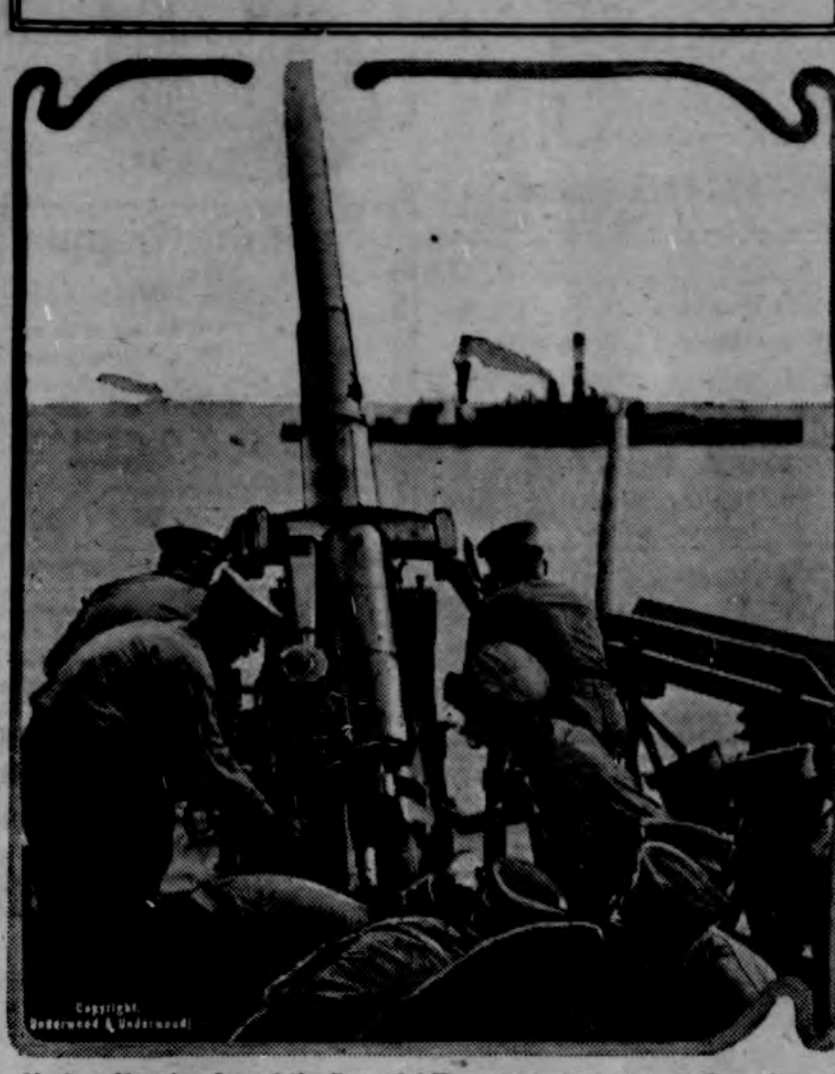
City of Hermiston according to plat filed with County Recorder Nov. 3, 1914.

Lot	Name	Amount
Lot 1, 25 feet, Tum-A-Lum	Lbr. Co.	1.75
Lot 2, 25 feet, Tum-A-Lum	Lbr. Co.	1.75
Lot 3, 25 feet, Tum-A-Lum	Lbr. Co.	1.75
Lot 4, 25 feet, Tum-A-Lum	Lbr. Co.	1.75
Lot 5, 25 feet, Tum-A-Lum	Lbr. Co.	1.75
Lot 6, 53 feet, Tum-A-Lum	Lbr. Co.	3.71
Lot 7, 57 feet, E. Maher		3.99
Lot 8, 59 feet, E. Maher		3.50
Block 2—		
Lot 1, 50 feet, Mrs. Minnie Brown		3.50
Lot 2, 50 feet, Mrs. Minnie Brown		3.50
Lot 3, 50 feet, Mrs. Minnie Brown		3.50
Lot 4, 50 feet, J. S. West		3.50
Lot 5, 25 feet, J. S. West		3.50
Lot 6, 25 feet, J. S. West		3.50
Lot 7, 50 feet, Mikesell		3.50
Lot 8, 50 feet, Mikesell		3.50
Lot 9, 50 feet, Mikesell		3.50
Lot 10, 50 feet, Mikesell		3.50
Lot 11, 50 feet, Mikesell		3.50
Lot 12, 50 feet, Mikesell		3.50
Lot 13, 50 feet, Mikesell		3.50
Lot 14, 50 feet, Mikesell		3.50
Lot 15, 50 feet, Mikesell		3.50
Lot 16, 50 feet, Mikesell		3.50
Lot 17, 50 feet, Mikesell		3.50
Lot 18, 50 feet, Mikesell		3.50
Lot 19, 50 feet, Mikesell		3.50
Lot 20, 50 feet, Mikesell		3.50
Lot 21, 50 feet, Mikesell		3.50
Lot 22, 50 feet, Mikesell		3.50
Lot 23, 50 feet, Mikesell		3.50
Lot 24, 50 feet, Mikesell		3.50
Lot 25, 50 feet, Mikesell		3.50
Lot 26, 50 feet, Mikesell		3.50
Lot 27, 50 feet, Mikesell		3.50
Lot 28, 50 feet, Mikesell		3.50
Lot 29, 50 feet, Mikesell		3.50
Lot 30, 50 feet, Mikesell		3.50
Lot 31, 50 feet, Mikesell		3.50
Lot 32, 50 feet, Mikesell		3.50
Lot 33, 50 feet, Mikesell		3.50
Lot 34, 50 feet, Mikesell		3.50
Lot 35, 50 feet, Mikesell		3.50
Lot 36, 50 feet, Mikesell		3.50
Lot 37, 50 feet, Mikesell		3.50
Lot 38, 50 feet, Mikesell		3.50
Lot 39, 50 feet, Mikesell		3.50
Lot 40, 50 feet, Mikesell		3.50
Lot 41, 50 feet, Mikesell		3.50
Lot 42, 50 feet, Mikesell		3.50
Lot 43, 50 feet, Mikesell		3.50
Lot 44, 50 feet, Mikesell		3.50
Lot 45, 50 feet, Mikesell		3.50
Lot 46, 50 feet, Mikesell		3.50
Lot 47, 50 feet, Mikesell		3.50
Lot 48, 50 feet, Mikesell		3.50
Lot 49, 50 feet, Mikesell		3.50
Lot 50, 50 feet, Mikesell		3.50
Lot 51, 50 feet, Mikesell		3.50
Lot 52, 50 feet, Mikesell		3.50
Lot 53, 50 feet, Mikesell		3.50
Lot 54, 50 feet, Mikesell		3.50
Lot 55, 50 feet, Mikesell		3.50
Lot 56, 50 feet, Mikesell		3.50
Lot 57, 50 feet, Mikesell		3.50
Lot 58, 50 feet, Mikesell		3.50
Lot 59, 50 feet, Mikesell		3.50
Lot 60, 50 feet, Mikesell		3.50
Lot 61, 50 feet, Mikesell		3.50
Lot 62, 50 feet, Mikesell		3.50
Lot 63, 50 feet, Mikesell		3.50
Lot 64, 50 feet, Mikesell		3.50
Lot 65, 50 feet, Mikesell		3.50
Lot 66, 50 feet, Mikesell		3.50
Lot 67, 50 feet, Mikesell		3.50
Lot 68, 50 feet, Mikesell		3.50
Lot 69, 50 feet, Mikesell		3.50
Lot 70, 50 feet, Mikesell		3.50
Lot 71, 50 feet, Mikesell		3.50
Lot 72, 50 feet, Mikesell		3.50
Lot 73, 50 feet, Mikesell		3.50
Lot 74, 50 feet, Mikesell		3.50
Lot 75, 50 feet, Mikesell		3.50
Lot 76, 50 feet, Mikesell		3.50
Lot 77, 50 feet, Mikesell		3.50
Lot 78, 50 feet, Mikesell		3.50
Lot 79, 50 feet, Mikesell		3.50
Lot 80, 50 feet, Mikesell		3.50
Lot 81, 50 feet, Mikesell		3.50
Lot 82, 50 feet, Mikesell		3.50
Lot 83, 50 feet, Mikesell		3.50
Lot 84, 50 feet, Mikesell		3.50
Lot 85, 50 feet, Mikesell		3.50
Lot 86, 50 feet, Mikesell		3.50
Lot 87, 50 feet, Mikesell		3.50
Lot 88, 50 feet, Mikesell		3.50
Lot 89, 50 feet, Mikesell		3.50
Lot 90, 50 feet, Mikesell		3.50
Lot 91, 50 feet, Mikesell		3.50
Lot 92, 50 feet, Mikesell		3.50
Lot 93, 50 feet, Mikesell		3.50
Lot 94, 50 feet, Mikesell		3.50
Lot 95, 50 feet, Mikesell		3.50
Lot 96, 50 feet, Mikesell		3.50
Lot 97, 50 feet, Mikesell		3.50
Lot 98, 50 feet, Mikesell		3.50
Lot 99, 50 feet, Mikesell		3.50
Lot 100, 50 feet, Mikesell		3.50

Lot 1, 25 feet, Wm. Correll	1.75
Lot 2, 25 feet, Wm. Correll	1.75
Lot 3, 25 feet, Wm. Correll	1.75
Lot 4, 25 feet, Wm. Correll	1.75
Lot 5, 25 feet, Wm. Correll	1.75
Lot 6, 25 feet, Wm. Correll	1.75
Lot 7, 25 feet, Wm. Correll	1.75
Lot 8, 25 feet, Wm. Correll	1.75
Lot 9, 25 feet, Wm. Correll	1.75
Lot 10, 25 feet, Wm. Correll	1.75
Lot 11, 25 feet, Wm. Correll	1.75
Lot 12, 25 feet, Wm. Correll	1.75
Lot 13, 25 feet, Wm. Correll	1.75
Lot 14, 25 feet, Wm. Correll	1.75
Lot 15, 25 feet, Wm. Correll	1.75
Lot 16, 25 feet, Wm. Correll	1.75
Lot 17, 25 feet, Wm. Correll	1.75
Lot 18, 25 feet, Wm. Correll	1.75
Lot 19, 25 feet, Wm. Correll	1.75
Lot 20, 25 feet, Wm. Correll	1.75
Lot 21, 25 feet, Wm. Correll	1.75
Lot 22, 25 feet, Wm. Correll	1.75
Lot 23, 25 feet, Wm. Correll	1.75
Lot 24, 25 feet, Wm. Correll	1.75
Lot 25, 25 feet, Wm. Correll	1.75
Lot 26, 25 feet, Wm. Correll	1.75
Lot 27, 25 feet, Wm. Correll	1.75
Lot 28, 25 feet, Wm. Correll	1.75
Lot 29, 25 feet, Wm. Correll	1.75
Lot 30, 25 feet, Wm. Correll	1.75
Lot 31, 25 feet, Wm. Correll	1.75
Lot 32, 25 feet, Wm. Correll	1.75
Lot 33, 25 feet, Wm. Correll	1.75
Lot 34, 25 feet, Wm. Correll	1.75
Lot 35, 25 feet, Wm. Correll	1.75
Lot 36, 25 feet, Wm. Correll	1.75
Lot 37, 25 feet, Wm. Correll	1.75
Lot 38, 25 feet, Wm. Correll	1.75
Lot 39, 25 feet, Wm. Correll	1.75
Lot 40, 25 feet, Wm. Correll	1.75
Lot 41, 25 feet, Wm. Correll	1.75
Lot 42, 25 feet, Wm. Correll	1.75
Lot 43, 25 feet, Wm. Correll	1.75
Lot 44, 25 feet, Wm. Correll	1.75
Lot 45, 25 feet, Wm. Correll	1.75
Lot 46, 25 feet, Wm. Correll	1.75
Lot 47, 25 feet, Wm. Correll	1.75
Lot 48, 25 feet, Wm. Correll	1.75
Lot 49, 25 feet, Wm. Correll	1.75
Lot 50, 25 feet, Wm. Correll	1.75
Lot 51, 25 feet, Wm. Correll	1.75
Lot 52, 25 feet, Wm. Correll	1.75
Lot 53, 25 feet, Wm. Correll	1.75
Lot 54, 25 feet, Wm. Correll	1.75
Lot 55, 25 feet, Wm. Correll	1.75
Lot 56, 25 feet, Wm. Correll	1.75
Lot 57, 25 feet, Wm. Correll	1.75
Lot 58, 25 feet, Wm. Correll	1.75
Lot 59, 25 feet, Wm. Correll	1.75
Lot 60, 25 feet, Wm. Correll	1.75
Lot 61, 25 feet, Wm. Correll	1.75
Lot 62, 25 feet, Wm. Correll	1.75
Lot 63, 25 feet, Wm. Correll	1.75
Lot 64, 25 feet, Wm. Correll	1.75
Lot 65, 25 feet, Wm. Correll	1.75
Lot 66, 25 feet, Wm. Correll	1.75
Lot 67, 25 feet, Wm. Correll	1.75
Lot 68, 25 feet, Wm. Correll	1.75
Lot 69, 25 feet, Wm. Correll	1.75
Lot 70, 25 feet, Wm. Correll	1.75
Lot 71, 25 feet, Wm. Correll	1.75
Lot 72, 25 feet, Wm. Correll	1.75
Lot 73, 25 feet, Wm. Correll	1.75
Lot 74, 25 feet, Wm. Correll	1.75
Lot 75, 25 feet, Wm. Correll	1.75
Lot 76, 25 feet, Wm. Correll	1.75
Lot 77, 25 feet, Wm. Correll	1.75
Lot 78, 25 feet, Wm. Correll	1.75
Lot 79, 25 feet, Wm. Correll	1.75
Lot 80, 25 feet, Wm. Correll	1.75
Lot 81, 25 feet, Wm. Correll	1.75
Lot 82, 25 feet, Wm. Correll	1.75
Lot 83, 25 feet, Wm. Correll	1.75
Lot 84, 25 feet, Wm. Correll	1.75
Lot 85, 25 feet, Wm. Correll	1.75
Lot 86, 25 feet, Wm. Correll	1.75
Lot 87, 25 feet, Wm. Correll	1.75
Lot 88, 25 feet, Wm. Correll	1.75
Lot 89, 25 feet, Wm. Correll	1.75
Lot 90, 25 feet, Wm. Correll	1.75
Lot 91, 25 feet, Wm. Correll	1.75
Lot 92, 25 feet, Wm. Correll	1.75
Lot 93, 25 feet, Wm. Correll	1.75
Lot 94, 25 feet, Wm. Correll	1.75
Lot 95, 25 feet, Wm. Correll	1.75
Lot 96, 25 feet, Wm. Correll	1.75
Lot 97, 25 feet, Wm. Correll	1.75
Lot 98, 25 feet, Wm. Correll	1.75
Lot 99, 25 feet, Wm. Correll	1.75
Lot 100, 25 feet, Wm. Correll	1.75

Block 9—		
Lot 1, 50 feet, J. D. Lowman	3.50	
Lot 2, 50 feet, J. D. Lowman	3.50	
Lot 3, 50 feet, J. D. Lowman	3.50	
Lot 4, 50 feet, J. D. Lowman	3.50	
Lot 5, 50 feet, J. D. Lowman	3.50	
Lot 6, 50 feet, J. D. Lowman	3.50	
Lot 7, 50 feet, J. D. Lowman	3.50	
Lot 8, 50 feet, J. D. Lowman	3.50	
Lot 9, 50 feet, J. D. Lowman	3.50	
Lot 10, 50 feet, J. D. Lowman	3.50	
Lot 11, 50 feet, J. D. Lowman	3.50	
Lot 12, 50 feet, J. D. Lowman	3.50	
Lot 13, 50 feet, J. D. Lowman	3.50	
Lot 14, 50 feet, J. D. Lowman	3.50	
Lot 15, 50 feet, J. D. Lowman	3.50	
Lot 16, 50 feet, J. D. Lowman	3.50	
Lot 17, 50 feet, J. D. Lowman	3.50	
Lot 18, 50 feet, J. D. Lowman	3.50	
Lot 19, 50 feet, J. D. Lowman	3.50	
Lot 20, 50 feet, J. D. Lowman	3.50	
Lot 21, 50 feet, J. D. Lowman	3.50	
Lot 22, 50 feet, J. D. Lowman	3.50	
Lot 23, 50 feet, J. D. Lowman	3.50	
Lot 24, 50 feet, J. D. Lowman	3.50	
Lot 25, 50 feet, J. D. Lowman	3.50	
Lot 26, 50 feet, J. D. Lowman	3.50	
Lot 27, 50 feet, J. D. Lowman	3.50	
Lot 28, 50 feet, J. D. Lowman	3.50	
Lot 29, 50 feet, J. D. Lowman	3.50	
Lot 30, 50 feet, J. D. Lowman	3.50	
Lot 31, 50 feet, J. D. Lowman	3.50	
Lot 32, 50 feet, J. D. Lowman	3.50	
Lot 33, 50 feet, J. D. Lowman	3.50	
Lot 34, 50 feet, J. D. Lowman	3.50	
Lot 35, 50 feet, J. D. Lowman	3.50	
Lot 36, 50 feet, J. D. Lowman	3.50	
Lot 37, 50 feet, J. D. Lowman	3.50	
Lot 38, 50 feet, J. D. Lowman	3.50	
Lot 39, 50 feet, J. D. Lowman	3.50	
Lot 40, 50 feet, J. D. Lowman	3.50	
Lot 41, 50 feet, J. D. Lowman	3.50	
Lot 42, 50 feet, J. D. Lowman	3.50	
Lot 43, 50 feet, J. D. Lowman	3.50	
Lot 44, 50 feet, J. D. Lowman	3.50	
Lot 45, 50 feet, J. D. Lowman	3.50	
Lot 46, 50 feet, J. D. Lowman	3.50	
Lot 47, 50 feet, J. D. Lowman	3.50	
Lot 48, 50 feet, J. D. Lowman	3.50	
Lot 49, 50 feet, J. D. Lowman	3.50	
Lot 50, 50 feet, J. D. Lowman	3.50	
Lot 51, 50 feet, J. D. Lowman	3.50	
Lot 52, 50 feet, J. D. Lowman	3.50	
Lot 53, 50 feet, J. D. Lowman	3.50	
Lot 54, 50 feet, J. D. Lowman	3.50	
Lot 55, 50 feet, J. D. Lowman	3.50	
Lot 56, 50 feet, J. D. Lowman	3.50	
Lot 57, 50 feet, J. D. Lowman	3.50	
Lot 58, 50 feet, J. D. Lowman	3.50	
Lot 59, 50 feet, J. D. Lowman	3.50	
Lot 60, 50 feet, J. D. Lowman	3.50	
Lot 61, 50 feet, J. D. Lowman	3.50	
Lot 62, 50 feet, J. D. Lowman	3.50	
Lot 63, 50 feet, J. D. Lowman	3.50	
Lot 64, 50 feet, J. D. Lowman	3.50	
Lot 65, 50 feet, J. D. Lowman	3.50	
Lot 66, 50 feet, J. D. Lowman	3.50	
Lot 67, 50 feet, J. D. Lowman	3.50	
Lot 68, 50 feet, J. D. Lowman	3.50	
Lot 69, 50 feet, J. D. Lowman	3.50	
Lot 70, 50 feet, J. D. Lowman	3.50	
Lot 71, 50 feet, J. D. Lowman	3.50	
Lot 72, 50 feet, J. D. Lowman	3.50	
Lot 73, 50 feet, J. D. Lowman	3.50	
Lot 74, 50 feet, J. D. Lowman	3.50	
Lot 75, 50 feet, J. D. Lowman	3.50	
Lot 76, 50 feet, J. D. Lowman	3.50	
Lot 77, 50 feet, J. D. Lowman	3.50	
Lot 78, 50 feet, J. D. Lowman	3.50	
Lot 79, 50 feet, J. D. Lowman	3.50	
Lot 80, 50 feet, J. D. Lowman	3.50	
Lot 81, 50 feet, J. D. Lowman	3.50	
Lot 82, 50 feet, J. D. Lowman	3.50	
Lot 83, 50 feet, J. D. Lowman	3.50	
Lot 84, 50 feet, J. D. Lowman	3.50	
Lot 85, 50 feet, J. D. Lowman	3.50	
Lot 86, 50 feet, J. D. Lowman	3.50	
Lot 87, 50 feet, J. D. Lowman	3.50	
Lot 88, 50 feet, J. D. Lowman	3.50	
Lot 89, 50 feet, J. D. Lowman	3.50	
Lot 90, 50 feet, J. D. Lowman	3.50	
Lot 91, 50 feet, J. D. Lowman	3.50	
Lot 92, 50 feet, J. D. Lowman	3.50	
Lot 93, 50 feet, J. D. Lowman	3.50	
Lot 94, 50 feet, J. D. Lowman	3.50	
Lot 95, 50 feet, J. D. Lowman	3.50	
Lot 96, 50 feet, J. D. Lowman	3.50	
Lot 97, 50 feet, J. D. Lowman	3.50	
Lot 98, 50 feet, J. D. Lowman	3.50	
Lot 99, 50 feet, J. D. Lowman	3.50	
Lot 100, 50 feet, J. D. Lowman	3.50	

Atlantic Fleet Proceeding to Guantanamo Bay for Winter Maneuvers



Marines Manning One of the Powerful Three-inch Anti-Aircraft Guns Aboard the Pennsylvania, Flagship of the Atlantic Fleet.

Our Growing Sweet Tooth
Public Paying Highest Price for Sugar Since Days Following Civil War

Mothers' Cook Book
There is only one way to get ready for immortality, and that is to love this life and live it bravely and faithfully and cheerfully as we can.—Henry Van Dyke.

The public is paying the highest price asked in this country for sugar since the days following the Civil War. There are reports from that time of sugar selling as high as 50 cents a pound, and that, of course, for an article much inferior in grade to what some persons have been paying 24 cents a pound for within recent weeks. But there is this notable difference: In Civil War times the high price of sugar caused a noticeable diminution in its use; now, with the price fourfold what most persons consider to be normal, we are using five times as much sugar for each person as we were in the year after the Civil war.

That year, the per capita use of sugar was 18 pounds. In the decade from 1866 to 1875 the price materially improved, and in response the use of sugar doubled to 35 pounds a person. From 1876 to 1885 it had increased to 42 pounds. In the decade from 1886 to 1895 the price of sugar went as low, probably, as at any time in our history, and for the excellently refined article