

Collision Damages Two Machines.
The light Ford delivery truck driven by C. P. Tallman collided at the intersection of Main and Division streets Wednesday afternoon with a motorcycle belonging to Iver Rindero, a young man residing near Gresham. Tallman was traveling south on Main street and in making the turn to the east at Division he was struck by the motorcycle, which was proceeding north on Main. The motorcycle was badly damaged, but Mr. Tallman's machine did not suffer as great a damage,

probably being around \$5 for repairs. He claims he made the proper signal for turning at the corner but that Rindero failed to observe it. The latter states he did not see Tallman give the signal, so it seems to be a question as to what the outcome of the affair will be. The case was brought before Justice of the Peace Brown for settlement, but he advocated that the parties settle the matter between themselves if possible.
For real estate loans see or call B. W. Thorne.—Adv.

GRESHAM LOCALS

Continued from page 3
Adolph Zenger and Earl Stanley are new employees of the Union Oil company from this section. Their work as area salesmen takes them over the territory between Portland and Mt. Hood. Zenger takes the place of Cecil Pulfer who is now in the grocery business with his father in Portland, and his position in the Cecil Metzger store is being filled by Guernsey Wood, who formerly worked there. Veal Howell is also employed in the Metzger grocery after school hours.

The many friends of Mrs. Hattie Riley, who formerly lived in Gresham, will regret to learn that she is in very poor health at the present time in Portland.

The Rebekah Welfare club will meet Monday afternoon, April 5, at the home of Mrs. George Kenney. Mrs. John Metzger and Mrs. A. McManus will serve. All Rebekahs are cordially invited to attend.

Mrs. Winifred Hill came up from Longview, Washington, on Monday and visited with H. S. Clow and family and Mr. and Mrs. Hans Larsen until yesterday. Her husband came Wednesday evening and both returned to Longview early Thursday morning.

Lester Spencer left yesterday for an extended trip through southern California. He is making the tour in his Overland and will visit relatives and friends at Los Angeles and other points.

The enterprising manager of the Gresham greenhouse, T. Bjornstad, reports a thriving pre-Easter sale of lilies and roses to the Portland trade. Thursday he shipped 600 Calla lilies and 2000 cut roses to Portland, the largest consignment he has ever made at this time of the year.

J. F. Barnes, a member of the firm of Barnes & Rorrison, lumbermen who recently came to Gresham from Seattle, has leased the Hoss residence on Maple avenue and expects to move his family in the first of next week. The Misses Mamie and Helen Hoss will occupy apartments at the Mabel Thomas home on Main street. Mr. and Mrs. Fred Hoss, who have been staying at the residence of the late J. H. Hoss for several months, are building a small temporary house on property recently acquired on East Powell street, near Kelly.

Dr. and Mrs. R. H. Todd are home from a week spent at Ridgefield, Washington, with their son, Ray Todd and family. They had the pleasure of witnessing the prune blossom parade which took place Sunday, beginning at Vancouver and stretching out over the prune area east of that city. The prune crop is said to be promising bounteous returns for the year 1926.

Among the rarities of the vegetable world which find their way to the Outlook office is an apricot far ahead of its natural season, brought in yesterday morning by E. J. Gradin, residing in east Gresham. The fruit is perfectly formed, seven-eighths of an inch in length and of a natural green. Mr. Gradin says that there is every indication of an unusually fine and early crop.

Don't forget the dance to be given by the Areme club next Friday evening, April 9, at the Masonic hall. Same good music.—Adv.

**NEW ARRIVALS IN
Summer Wash Fabrics**

Soisette, one of the most popular materials in the mercerized line of wash goods are shown in small and large figures in many colors. **50c**
Absolutely fast colors, yd. 50c
36-inch wide prints, scroll patterns. Nice colors, yard, **25c**
Mercerized voiles, plains colors, plenty of shades, 36 inch, yard, **35c**
Voiles in dark and light figures, Very choice patterns, yard **45c & 50c**
Shangtai silk in plain colors, white, maize, orchid, sea spray, orange, peach, suitable for dresses and under garments, yd. **95c**
See the non-cling fabric for slips. Looks like silk, 12 colors, yd. **50c**
Plain and striped broadcloth. Fine cloth, highly mercerized, yd. **60c**



Women's Neckwear
Sweetheart, figured silk bows, new colors, to harmonize with the new dress goods. priced, each **50c & 75c**
Co-Ed rufflings, made with a soutache cord in the top so the lace can be ruffled instantly. Will fit any neckline. Ecru, colored embroidered figure, yard. **\$1.00**
Same in solid color ecru, yard. **60c**

Our lines of children's three-quarter hose are now in stock. White and light colors, with colored cuff tops. Pair. **25c, 50c, 75c**
We can match your costumes in Ladies' Silk Hose. Pair, **50c, 98c, \$1.50, \$1.98**

WALRAD MERCANTILE CO.
"The House of Quality"
GRESHAM, OREGON
PHONE 1411
We Give Green Trading Stamps

GROCERY SPECIALS

NEWBERG HAM "The ham what am" Whole or half, lb. 39c	MAXWELL HOUSE COFFEE Spcl. heavy blend for Pacific coast trade 1 lb. 57c , 3 lbs. \$1.68
Solar Brand Broken Sliced Pineapple 2 cans 25c	Long's Cane and Maple Syrup. Better grade than ordinary. Pint can 35c , quart 65c 2 quarts, \$1.25
Iowana Corn 3 cans 39c	Seedless Raisins Market Day Raisins 4-lb. package 39c
Otter Minced Clams Special can 25c	Orange Marmalade Kerr's large 24-oz bottle Special 24c
Toilet Soap Including Creme Oil, Peets Mechanic, Bath Tablets and Peter Pan 6 bars 39c	Silver Bar Tomatoes 3 cans 39c
SMALL WHITE BEANS, 3 pounds 25c	MEXICAN RED BEANS, 3 pounds 25c
CLO-WHITE BLUING, larger than Mrs. Stewart's, 10 per cent stronger, bottle 20c	SWEET JUICY ORANGES 3 dozen 85c
CLO-WHITE HOUSEHOLD AMMONIA, very strong, bottle 15c	

A. W. Metzger & Co.
Quality and Service
Phone 1451
Feed 1281

Pre-Easter Display

In helping you to secure the garment, or dress accessory of your choice, we have arranged matchless display of all that is worthy and best. Authentic dress modes, frocks, dresses, coats, hosiery, bags, gloves, undergarments, neckwear, scarfs, umbrellas, pumps, shoes, oxfords, ties, men's furnishings, etc.

New Silk Dresses

\$7.50 \$9.50 \$12.50 to \$18.50



Dresses of exceptional merit in Crepes, Georgettes, also the extremely popular print silk dresses in charming patterns and colors. The assortment includes all the new style tendencies in neckline in sleeves, in flares, in pleatings, and circular effects. Popular colors such as Bois de rose, Jenny rose, harvest, cocoa, dawn, and many in darker colors for the more conservative taste.

Sport Coats and the New Charmine Fancy Coats

\$16.00 to \$27.50

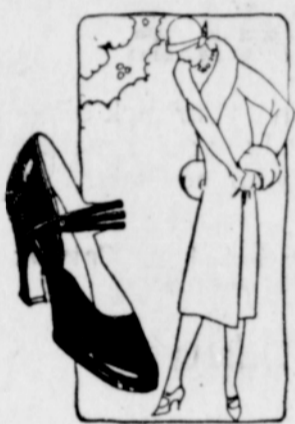
shown here in all the new colors, fabrics, some with fur trimmings and tailored effects, flares and cape models. Remarkable values.

GLOVES

Ladies' Washable Suede Finish Gloves with fancy turn back, colored cuffs, in colors of grey, mode, sand and cocoa. **\$1.00 to \$1.50 pair**



Ladies' and Misses' Patent Leather Pumps, one strap **\$3.25 to \$4.85**



Ladies' Step-in Pumps, plain and with fancy buckle. **\$5.85**
Men's Light Tan Calf Oxfords at. **\$3.95 to \$5.50**
Boys' and Men's Caps. **95c to \$3.50**

New Pouch Bags, under the Arm Bag and Vanity Bags. **\$1.95 to \$4.85**
The new pouch bag comes in Green, Red, Tan and Blue

Munsing Silk Rayon Underwear

Silk Rayon Vests. Colors: peach, flesh, orchid. Sizes 36 to 50. **\$1.50**
Silk Rayon Bloomers. Colors: peach, flesh, orchid. All sizes. **\$2.50**
Silk Rayon Stepins. Colors: peach, flesh, orchid. All sizes. **\$2.50**

HOLEPROOF HOSIERY



Ask for No. 590 Pure Thread Silk Hose, mercerized hemmed top, 20-inch silk leg, mercerized heel, toe, and plated sole. Colors: grain, peach, French nude, new gun metal, satin blonde, shadow, black. Pair. **\$1.25**
No. 2475 Full Fashioned Silk Chiffon Hose, mercerized flare top, 20-in. silk leg, merc. heel, toe and sole. All the new colors at. **\$1.85**

No. 2200 Heavy Pure Thread Silk Hose, full fashioned, 20-inch silk leg, flare top, including a full range of all the new spring colors. Pair. **\$1.95**
Munsing Hosiery, pure thread silk, full fashioned. **\$1.50**
CUTIES SOCKS FOR TOTS.
Sizes 4 1/2 to 6 1/2 at 25c, 35c and 50c
CUTIES SPORT HOSE, 7/8 lengths.
Sizes 7 to 9 1/2, 25c, 35c, 50c

An exceptional good wearing Silk Hose, contains some fibre that adds weight and strength, in all the new colors and a wide range to select from, at. **98c**
Fibre Silk and Lisle Hosiery for women, in French nude, tan bark, piping rock, black and cordovan, at. **50c**

Agents for the Butterick Patterns and Publication **L. A. Wack & Co.**
Park here and shop in comfort
Phone 2221
Gresham, Oregon
Agents for Holeproof Silk Hosiery and Munsing Wear

Mrs. Clarence Kruger is assisting at the women's apparel shop conducted by Mrs. F. C. Jones in the Osburn building.

Mrs. Glenn Rusher, of Albany, visited Tuesday and Wednesday at the C. E. Rusher home in Gresham.

Listen, Farmers. If you need farm machines of any kind, see Ruark at the International Harvester Co., Portland. He pays the freight.—Adv.

It pays to buy from the International Harvester Co. You can always get your parts. We pay the freight. See Ruark.—Adv.

Garden Service. Pruning, landscaping, lawns, spading. Old fashioned gardens a specialty. Complete line of fruit and ornamental trees and shrubs for sale. W. W. Stowe, phone 321.—Adv.

Boys' Suits \$9.85. Two pair full lined knickers. Sturdy woollens, well tailored. Big assortment of patterns. 6 to 18 years. Aylsworth & Martin.—Adv.

Read and use the Want Ads.

GRESHAM FUNERAL PARLORS
WHEN THE LIGHT HAS GONE OUT
Phone 1901
J.E. METZGER DIRECTOR