

GRESHAM OUTLOOK

Published every Tuesday and Friday at Gresham, Oregon, by the Outlook Publishing Co., H. L. St. Clair, Editor and Manager.

One year, \$1.50, six months, 85c, three months, 50c. Single copies, 10c. Combination rates with all the Portland Dailies.

ADVERTISING Rates reasonable. Our representative will call.

Entered as second-class matter March 8, 1911, at the Postoffice at Gresham, Oregon, under the Act of March 3, 1879.

A Telephone Nation.

The telephone is rapidly usurping the position formerly held by the telegraph in control of trains and transmission of railroad business.

Train orders are now being transmitted by telephone on more than 54 per cent of the railroads of the country.

Not only are telephones being used for transmission of train orders, but telephone stations are being installed on many roads at each signal bridge and siding, and are connected with adjacent interlocking or block stations, so that almost constant communication can be had by train crews, with headquarters.

Many railroads have also provided means by which observation cars on certain trains are connected with the city telephone service, so that a passenger up to the time the train leaves the station, may communicate with any point in the city.

Statistical records of the Port of Portland show that copper to the value of \$4,291,020 was exported from Portland during the past year. Waterborne cargoes handled between Portland and Atlantic coast ports during 1925, totaled nearly \$11,000,000, of which, mineral products were about 40 per cent. The largest single item sent to Atlantic coast ports was copper; and large tonnage of lead, zinc and silver.

Carefulness Will Eliminate Danger.

Every winter numerous deaths are caused by carbon monoxide. The Information Bureau of Kansas Public Service companies has prepared the following set of "danger signals":

"When unaccountable headaches come on, especially with two or more persons involved, you have a reason to suspect carbon poisoning if there are any gas stoves, gas grates, or doubtful-fueled furnaces or furnaces about.

"If matches will not burn perfectly in the general air of the rooms, or if there is a sense of drowsiness in rather confined quarters, you have reason to suspect carbon monoxide.

"Suspect monoxide gas if, on arising from a chair or attempting active work, weakness of the knees occurs and it requires special effort to get one's self to the job.

"Suspect the cook stove, whether it is of gas or other type, when these symptoms are aggravated during preparation of a meal.

"Flueless water heaters, whether in bathroom, kitchen or basement, should be constant objects of suspicion, regardless of their type. All of them should have outside flues."

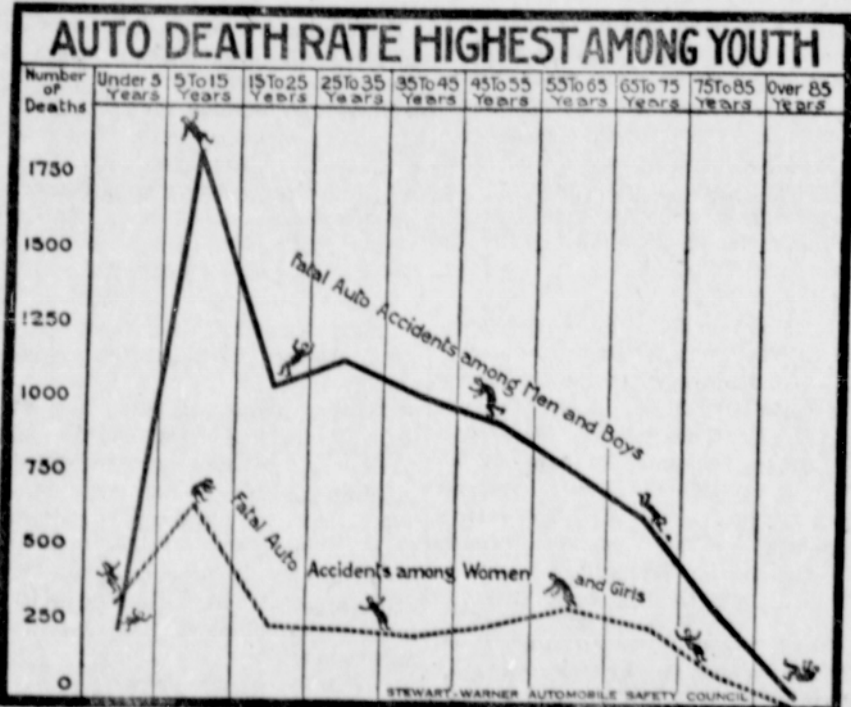
Explained.

The lesson of the day was about Moses and the Promised Land. The teacher asked a little girl why all the cities in the Promised Land had high walls around them.

Wide-eyed with awe, the little girl answered: "That was to keep the milk and honey from running out, ma'am."

Make your telephone earn you more by connecting it with a want ad.

Youth of Nation Tops Death List in U. S. Auto Fatalities



YOUTH pays the heaviest toll in annual automobile fatalities. From five to fifteen years is the period when the greatest number of fatal accidents occur, for both sexes. The chart shows the age distribution of automobile deaths for men and women as given in the latest mortality figures prepared by the government. These figures, says the Stewart-Warner Safety Council for the prevention of automobile accidents, emphasize the need for more playgrounds and increased safety education among school children.

GIRLS MORE ATTRACTIVE THAN MOTHERS WERE

The girl of a generation ago was not as attractive as the girl of today, according to Mrs. George T. Gerlinger, of Portland, member of the University of Oregon board of regents, who addressed in a recent address before a Women's League mass meeting, that "girls now dress more sensibly, with short skirts, a tiny bit of rouge and sensible shoes."

"In my college days," said Mrs. Gerlinger, "girls wore collars from three to four inches high. On our dresses, we had little trains which we carried over our arms, and we wore high-heeled patent leather slippers.

"Today, however," Mrs. Gerlinger added, "young women are sensitive about guidance; they wish to keep their mothers in the background, while in many ways, their mothers could be of great help to them. In our day we had just as much freedom as you have now, but we did not discuss it so much."

Well Equipped.

"Why do you say yours is the most up-to-date church in town, Gardena?" "Well, Ganzoos, it has a garage, radio store, antique shoppe, and crossword puzzle bookshop in the basement,"—Judge.

A Call for Help.

Now will that clever dispenser of joy, Who gave mother a permanent wave, Give us a permanent bath for the boy, And father a permanent shave! —Wholly Unknown.

One!

'Mid Arizona's deserts, Are things for us to frown on, They grow the finest cactus, That ever I sat down on. —Nebraska Awgwan.

SUMMONS.

In the Circuit Court of the State of Oregon for the County of Multnomah, Ellis Davidson, Plaintiff vs. W. H. Bradley, Defendant.

You are hereby required to appear and answer the complaint filed against you in the above entitled suit on or before Wednesday, the 24th day of March, 1926, and if you fail to so appear and answer for want thereof, plaintiff will apply to the court for the relief prayed for in said complaint, to-wit:

That plaintiff have and recover of and from the defendant, W. H. Bradley, the sum of \$525.00 with interest at seven per cent from the 24th day of July, 1925, and attorney's fees in the sum of \$75.00, together with the costs and disbursements of this suit; and that plaintiff's mortgage, executed by the defendant on the 11th day of July, 1925, and recorded in Book 1089, on page 234, Records of Deeds, of Multnomah County, Oregon, and more particularly as described in the complaint herein, be declared a valid first lien upon the property therein described, to-wit:

A tract of land in said County of Multnomah, Oregon, being a part of the Alonzo Gates Donation Land Claim in Township One (1) South, Range Two (2) East of the Willamette Meridian, more particularly described as follows: Beginning at a point in the said claim, 4.526, 24 feet east and 59.76 feet south of the Northwest corner thereof; running thence north along the westerly line of said claim to Guy G. Willis by deed recorded in Book 213 at Page 184, Deed Records of said County, 1924, 1925; thence west, parallel to the North boundary of said claim 400 feet; thence south 108.76 feet; thence east parallel to the north boundary of said claim 400 feet to the point of beginning.

And that said mortgage be foreclosed, and the usual decree made for the sale of said premises by the sheriff of said county, according to law and the practice of this court.

This summons is served upon you by publication thereof by order of the Hon. John H. Stevenson, Judge of the above entitled court, duly made and entered on the 8th day of February 1926, and said order directs publication of this summons not less than once a week for six successive weeks. The date of the first publication of this summons is February 9, 1926. The date of the last publication of this summons is March 23, 1926.

W. J. COOPER, Attorney for Plaintiff, Gresham, Oregon.

ADMISSION 50 cents per person. Friday, Feb. 26. Old Time Dance. Masonic Hall, Gresham.

Efficiency!

"Why, Bridget, did you wash these windows?" "Yes'm, but I only wash the insides —that's the part you look at, ain't it?" —Life.

Trade Mark Applied For.

Notice is hereby given, That the Co-operative Lettuce and Cauliflower Ass'n, a corporation, has made application to the Secretary of State, of the State of Oregon for the issuance to it of a trade mark for the following described wording, to-wit: "Troutdale Co-op Lettuce & Cauliflower Ass'n", which trade mark shall be printed on the end rail of cauliflower, lettuce and cabbage crates.

Notice is further given, that the trade mark will be used on crates and shipments of cauliflower, lettuce and cabbage. This notice is published once a week for three consecutive weeks in the Gresham Outlook, in compliance with Chapter 97, General Laws of 1911, State of Oregon.

(Signed) CO-OPERATIVE LETTUCE & CAULIFLOWER ASS'N. By Geo. H. Chamberlain, Pres. CO-OPERATIVE LETTUCE & CAULIFLOWER ASS'N. By H. E. Boyd, Secretary.

NOTICE OF WITHDRAWAL FROM PARTNERSHIP.

To Whom It May Concern: This is to certify that on or about the 25th day of December, 1925, I withdrew from the partnership of Hotkin & Ryan, and from and after that date, I will not in any manner be responsible for any obligations of said firm. Dated this 16th day of February, 1926. J. HERBERT RYAN.

3 Handy packs for 5¢. Wrigley's P.K. NEW HANDY PACK Fits hand ~ pocket and purse. More for your money and the best Peppermint Chewing Sweet for any money.

HEADACHES and PAINS quickly RELIEVED BY USING REMFA 25 CENTS at DRUG STORES. SHOES WORK AND DRESS SHOES for Men and Boys. Expert Shoe Repairing. GRESHAM SHOE SHOP CARL DAHL Phone 41 Gresham.

TURNER TRUCK SERVICE BLAINE TURNER, Prop. Regular Afternoon Trips Portland to Gresham. General Hauling. Phone Gresham 1689 R. 2, Troutdale. All kinds of Trucking. Slabwood, Wood, Gravel and General Hauling. H. McGinnis Truck Co. BORING, OREGON Phone Gresham 76x. Auto Freight Terminal Portland, Phone East 2304 Gresham, Phone 1201.

Lundquist Truck Line Successor to Morgan Bros. PORTLAND WAY POINTS GRESHAM Local and Long Distance Moving. A. F. HAMMAR Contractor and Builder Eastern Multnomah Representative of Genuine Stone-Tone Stucco Co. Gresham, Ore. Phone 961.

CLASSIFIED, BUSINESS AND PROFESSIONAL ADS.

Horses FOR SALE—A light horse or will trade for one weighing 1400 lbs. E. Sandstrom, Rt. 4, Boring. WANTED TO BUY a farm horse, about 1250 or 1300 lbs. State age and price. Write Melvin Gradin, R. 1, Gresham, Oregon.

FOR SALE—Space in this classified department. Call at office or phone Gresham 1561.

Cattle YOUNG JERSEY COW for sale, will be fresh in a few days. Phone Gresham 365. REGISTERED GUERNSEY BULL for sale. No reasonable offer refused. Mrs. Ellen Nelson, Corbett, Oregon.

FOR SALE—4 Holstein bulls, 1, 2 and 3 years old. C. Minsinger, 210 Board of Trade, Portland.

Poultry BABY CHICKS FOR SALE. Reds 15 cents, whites 12 cents. H. S. Clow, Gresham, phone 26. CHANCE TO IMPROVE YOUR FLOCK at a reasonable price. 3 White Leghorn cockerels, bred from high producing stock (pure Tanager), \$3.50 each, also 1 yearling cock. Bird a great improved breeder at \$5; also 1 Belle City incubator, 140 eggs, in good condition, \$9. Henry Gibson, Boring, Rt. 1, Cottrell and Bluff roads. Call after 5:30 p.m. or on Sundays.

BARRED ROCK EGGS for hatching, \$4 per 100. Mrs. F. H. Miller, 1 1/2 miles west of Lusted schoolhouse on Bull Run road, R. 2, Box 271, Gresham.

BABY CHICKS. White Leghorn and Rhode Island Reds at a reasonable price. 3 White Leghorn cockerels, bred from high producing stock (pure Tanager), \$3.50 each, also 1 yearling cock. Bird a great improved breeder at \$5; also 1 Belle City incubator, 140 eggs, in good condition, \$9. Henry Gibson, Boring, Rt. 1, Cottrell and Bluff roads. Call after 5:30 p.m. or on Sundays.

BABY CHICKS. White Leghorn and Rhode Island Reds at a reasonable price. 3 White Leghorn cockerels, bred from high producing stock (pure Tanager), \$3.50 each, also 1 yearling cock. Bird a great improved breeder at \$5; also 1 Belle City incubator, 140 eggs, in good condition, \$9. Henry Gibson, Boring, Rt. 1, Cottrell and Bluff roads. Call after 5:30 p.m. or on Sundays.

BABY CHICKS. White Leghorn and Rhode Island Reds at a reasonable price. 3 White Leghorn cockerels, bred from high producing stock (pure Tanager), \$3.50 each, also 1 yearling cock. Bird a great improved breeder at \$5; also 1 Belle City incubator, 140 eggs, in good condition, \$9. Henry Gibson, Boring, Rt. 1, Cottrell and Bluff roads. Call after 5:30 p.m. or on Sundays.

BABY CHICKS. White Leghorn and Rhode Island Reds at a reasonable price. 3 White Leghorn cockerels, bred from high producing stock (pure Tanager), \$3.50 each, also 1 yearling cock. Bird a great improved breeder at \$5; also 1 Belle City incubator, 140 eggs, in good condition, \$9. Henry Gibson, Boring, Rt. 1, Cottrell and Bluff roads. Call after 5:30 p.m. or on Sundays.

BABY CHICKS. White Leghorn and Rhode Island Reds at a reasonable price. 3 White Leghorn cockerels, bred from high producing stock (pure Tanager), \$3.50 each, also 1 yearling cock. Bird a great improved breeder at \$5; also 1 Belle City incubator, 140 eggs, in good condition, \$9. Henry Gibson, Boring, Rt. 1, Cottrell and Bluff roads. Call after 5:30 p.m. or on Sundays.

BABY CHICKS. White Leghorn and Rhode Island Reds at a reasonable price. 3 White Leghorn cockerels, bred from high producing stock (pure Tanager), \$3.50 each, also 1 yearling cock. Bird a great improved breeder at \$5; also 1 Belle City incubator, 140 eggs, in good condition, \$9. Henry Gibson, Boring, Rt. 1, Cottrell and Bluff roads. Call after 5:30 p.m. or on Sundays.

BABY CHICKS. White Leghorn and Rhode Island Reds at a reasonable price. 3 White Leghorn cockerels, bred from high producing stock (pure Tanager), \$3.50 each, also 1 yearling cock. Bird a great improved breeder at \$5; also 1 Belle City incubator, 140 eggs, in good condition, \$9. Henry Gibson, Boring, Rt. 1, Cottrell and Bluff roads. Call after 5:30 p.m. or on Sundays.

BABY CHICKS. White Leghorn and Rhode Island Reds at a reasonable price. 3 White Leghorn cockerels, bred from high producing stock (pure Tanager), \$3.50 each, also 1 yearling cock. Bird a great improved breeder at \$5; also 1 Belle City incubator, 140 eggs, in good condition, \$9. Henry Gibson, Boring, Rt. 1, Cottrell and Bluff roads. Call after 5:30 p.m. or on Sundays.

BABY CHICKS. White Leghorn and Rhode Island Reds at a reasonable price. 3 White Leghorn cockerels, bred from high producing stock (pure Tanager), \$3.50 each, also 1 yearling cock. Bird a great improved breeder at \$5; also 1 Belle City incubator, 140 eggs, in good condition, \$9. Henry Gibson, Boring, Rt. 1, Cottrell and Bluff roads. Call after 5:30 p.m. or on Sundays.

BABY CHICKS. White Leghorn and Rhode Island Reds at a reasonable price. 3 White Leghorn cockerels, bred from high producing stock (pure Tanager), \$3.50 each, also 1 yearling cock. Bird a great improved breeder at \$5; also 1 Belle City incubator, 140 eggs, in good condition, \$9. Henry Gibson, Boring, Rt. 1, Cottrell and Bluff roads. Call after 5:30 p.m. or on Sundays.

BABY CHICKS. White Leghorn and Rhode Island Reds at a reasonable price. 3 White Leghorn cockerels, bred from high producing stock (pure Tanager), \$3.50 each, also 1 yearling cock. Bird a great improved breeder at \$5; also 1 Belle City incubator, 140 eggs, in good condition, \$9. Henry Gibson, Boring, Rt. 1, Cottrell and Bluff roads. Call after 5:30 p.m. or on Sundays.

BABY CHICKS. White Leghorn and Rhode Island Reds at a reasonable price. 3 White Leghorn cockerels, bred from high producing stock (pure Tanager), \$3.50 each, also 1 yearling cock. Bird a great improved breeder at \$5; also 1 Belle City incubator, 140 eggs, in good condition, \$9. Henry Gibson, Boring, Rt. 1, Cottrell and Bluff roads. Call after 5:30 p.m. or on Sundays.

BABY CHICKS. White Leghorn and Rhode Island Reds at a reasonable price. 3 White Leghorn cockerels, bred from high producing stock (pure Tanager), \$3.50 each, also 1 yearling cock. Bird a great improved breeder at \$5; also 1 Belle City incubator, 140 eggs, in good condition, \$9. Henry Gibson, Boring, Rt. 1, Cottrell and Bluff roads. Call after 5:30 p.m. or on Sundays.

BABY CHICKS. White Leghorn and Rhode Island Reds at a reasonable price. 3 White Leghorn cockerels, bred from high producing stock (pure Tanager), \$3.50 each, also 1 yearling cock. Bird a great improved breeder at \$5; also 1 Belle City incubator, 140 eggs, in good condition, \$9. Henry Gibson, Boring, Rt. 1, Cottrell and Bluff roads. Call after 5:30 p.m. or on Sundays.

BABY CHICKS. White Leghorn and Rhode Island Reds at a reasonable price. 3 White Leghorn cockerels, bred from high producing stock (pure Tanager), \$3.50 each, also 1 yearling cock. Bird a great improved breeder at \$5; also 1 Belle City incubator, 140 eggs, in good condition, \$9. Henry Gibson, Boring, Rt. 1, Cottrell and Bluff roads. Call after 5:30 p.m. or on Sundays.

BABY CHICKS. White Leghorn and Rhode Island Reds at a reasonable price. 3 White Leghorn cockerels, bred from high producing stock (pure Tanager), \$3.50 each, also 1 yearling cock. Bird a great improved breeder at \$5; also 1 Belle City incubator, 140 eggs, in good condition, \$9. Henry Gibson, Boring, Rt. 1, Cottrell and Bluff roads. Call after 5:30 p.m. or on Sundays.

BABY CHICKS. White Leghorn and Rhode Island Reds at a reasonable price. 3 White Leghorn cockerels, bred from high producing stock (pure Tanager), \$3.50 each, also 1 yearling cock. Bird a great improved breeder at \$5; also 1 Belle City incubator, 140 eggs, in good condition, \$9. Henry Gibson, Boring, Rt. 1, Cottrell and Bluff roads. Call after 5:30 p.m. or on Sundays.

BABY CHICKS. White Leghorn and Rhode Island Reds at a reasonable price. 3 White Leghorn cockerels, bred from high producing stock (pure Tanager), \$3.50 each, also 1 yearling cock. Bird a great improved breeder at \$5; also 1 Belle City incubator, 140 eggs, in good condition, \$9. Henry Gibson, Boring, Rt. 1, Cottrell and Bluff roads. Call after 5:30 p.m. or on Sundays.

BABY CHICKS. White Leghorn and Rhode Island Reds at a reasonable price. 3 White Leghorn cockerels, bred from high producing stock (pure Tanager), \$3.50 each, also 1 yearling cock. Bird a great improved breeder at \$5; also 1 Belle City incubator, 140 eggs, in good condition, \$9. Henry Gibson, Boring, Rt. 1, Cottrell and Bluff roads. Call after 5:30 p.m. or on Sundays.

BABY CHICKS. White Leghorn and Rhode Island Reds at a reasonable price. 3 White Leghorn cockerels, bred from high producing stock (pure Tanager), \$3.50 each, also 1 yearling cock. Bird a great improved breeder at \$5; also 1 Belle City incubator, 140 eggs, in good condition, \$9. Henry Gibson, Boring, Rt. 1, Cottrell and Bluff roads. Call after 5:30 p.m. or on Sundays.

BABY CHICKS. White Leghorn and Rhode Island Reds at a reasonable price. 3 White Leghorn cockerels, bred from high producing stock (pure Tanager), \$3.50 each, also 1 yearling cock. Bird a great improved breeder at \$5; also 1 Belle City incubator, 140 eggs, in good condition, \$9. Henry Gibson, Boring, Rt. 1, Cottrell and Bluff roads. Call after 5:30 p.m. or on Sundays.

BABY CHICKS. White Leghorn and Rhode Island Reds at a reasonable price. 3 White Leghorn cockerels, bred from high producing stock (pure Tanager), \$3.50 each, also 1 yearling cock. Bird a great improved breeder at \$5; also 1 Belle City incubator, 140 eggs, in good condition, \$9. Henry Gibson, Boring, Rt. 1, Cottrell and Bluff roads. Call after 5:30 p.m. or on Sundays.

BABY CHICKS. White Leghorn and Rhode Island Reds at a reasonable price. 3 White Leghorn cockerels, bred from high producing stock (pure Tanager), \$3.50 each, also 1 yearling cock. Bird a great improved breeder at \$5; also 1 Belle City incubator, 140 eggs, in good condition, \$9. Henry Gibson, Boring, Rt. 1, Cottrell and Bluff roads. Call after 5:30 p.m. or on Sundays.

THINK THINK THINK Do not squander time that is the stuff of life is made of.

TRUCKMEN ATTENTION! State permits, liabilities and property damage can be had at greatly reduced rates of John Brown, Powell street, Gresham, phone 2591.

Intention Expert. \$25 will be given to him who proves that I cannot find the deficiency of my machine on starting, lighting and ignition. Main Street Garage, Phone Gresham 1228.

Farm Machinery, Etc. ELECTRIC WASHER, MAYTAG used electric washer, \$25. Phone 1901. WANTED—More people to use the Want Ads. Call Gresham 1561.

HAY. OATS AND CLOVER and timothy, cheap. See P. L. Dunn, Dunn's corner, Bluff road.

Plants, Seeds, Etc. BERRY PLANTS WANTED, Gold Dollars or Marshalls, by Matt Schwesiger, Box 401, Rt. 3, Milwaukie, Oregon.

EARLY ROSE SEED POTATOES for sale. C. B. Allen, Rt. 2, Troutdale, phone Gresham 166.

FOR SALE—Large year-old Mary Washington asparagus roots. Wilson Bros., Troutdale, Oregon.

100,000 IMPROVED OREGON strawberry plants for sale. Thrifty plants, no grubs. \$3 per thousand. A. H. Porter, Springfield, Oregon.

MARSHALL AND NEW OREGON strawberry plants for sale. State inspected, on new ground, \$4 per thousand. Frank Gustafson, phone Gresham 289.

BARTLETT AND ANJOU PEAR trees, 15 years old, for sale. 50 trees or under, 15 cents each, above 50, 10 cents each. J. H. Miller and O. N. Loney, 1/2 mile north Cottrell road, address Boring, R. 1, Box 127.

PLANT TREES NOW. Now is the time to plant trees. We have peach, pear, plum, prune, apple, walnut, and other trees. All kinds of fruit trees, berry plants and grape vines at reduced prices. Nursery located on Powell Valley road, one mile and a half west of Gresham. Send for catalogue and price list. Powell Valley Nursery, Portland, Oregon, Route 1, phone Gresham 122.

WOOD and Sawing. WOOD FOR SALE. Delivered in 4-foot or 16-inch lengths. Maple wood, 16-inch, \$7. W. E. Hossner, Gresham, phone 372.

12 CORDS NO. 1 WOOD FOR SALE at Hillsview, Vogler & Gerber, phone Gresham 30x1.

DRY WOOD FOR SALE. Old-growth, second-growth, country slab, and the blocky wood saw and delivered. C. H. Calkins Wood Co., 513 St. west of Main, Gresham, Box 95, Phone 119x.

FOR WOODSAWING call Steve Marston, phone 385.

WOODSAWING DONE. See me for real service. Floyd Surface, successor to Geo. Shaw, Fairview, Oregon, phone Gresham 22x4.

CALKINS WOOD SAWING, even lengths a specialty. Phone 1196.

Musical Instruments, Radio. FOR SALE—FINE UPRIGHT PIANO, mahogany case. In the Studio of Florence M. Honey, First State Bank building. Easy terms. See Miss Honey.

FOR SALE—Space in this classified department. Call at office or phone Gresham 1561.

Articles--Lost or Found. TO WHOM IT MAY CONCERN. A stray 2-year-old Holstein heifer has been bothering about six weeks, on the Reid place, corner Hensley road and Rose Lane. If not taken care of at once owner must pay damages. Jas. Naylor, phone Gresham 723.

LOST in Gresham near Bentley's Tire shop, gold rimmed glasses. Finder leave at Outlook office.

LOST—Between Sunnyside and Boring, one 12-inch walking plow, two garden rakes, two forks and shovel. Howard. Please notify E. A. Anderson, Route 4, Boring, Oregon.

WANTED—More people to use the Want Ads. Call Gresham 1561.

EMPLOYMENT. JAPANESE WANT WORK in berry fields, cleaning and pruning. Will furnish tools. Have good experience. Will Gresham, Oregon. P. O. Box 25.

WANTED—Plowing and general tractor work. H. L. Langlitz & Sons, Rt. 2, Gresham.

PLOWING AND GENERAL TEAM WORK wanted. Basement digging and grading contracted. E. Wall, Gresham, phone 33x4.

GENERAL TEAM WORK—garden, grading, excavating, etc. Chas. W. Adams, Gresham, phone 119.

SEVERAL JAPANESE WANT WORK in berry fields, cleaning and pruning. Will furnish tools. U. Hasegawa, Gresham, Box 43, phone 3x.

Miscellaneous. FOR SALE—A new chest of drawers. A Blom, west Fifth street, Gresham.

FOR SALE—Winchester rifle, 16-gauge, very fine 430. Baker, Cost 225. Will sell for \$55 cash. Mrs. Bruce Bunn, Barker road near Powell Valley, phone Gresham 125.

FOR SALE—300 cedar posts. All large posts cut from old timber. Also enough 10, 12 galvanized wire for 3 acres berries. A. Feacher, Linnemann station.

BED DAVENPORT, full length, brown leatherette, covered on quartersawed oak, in very good shape, cost new better than \$100, used price \$45. Phone 1901.

CEDAR POSTS FOR SALE—Car load lots. John Hughes, Box 66, Bull Run, Oregon.

GAS RANGE FOR SALE, good as new, 2 ovens, 4 holes, tin baker. Cost \$225. Will sell for \$55 cash. Mrs. Bruce Bunn, Barker road near Powell Valley, phone Gresham 125.

GOOD CEDAR FENCE and berry posts for sale. John Vicklund, phone 273.

KITCHEN RANGE in good condition, \$23. F. Speybrock, 2 miles east of Gresham on Section Line road.

ROAD AND CEMENT GRAVEL, 50c and 75c per yard at pit. Also delivered. L. L. Davidson, Troutdale, Hensley road, Phone 15x1.

Pedigree Blanks. The Outlook has a supply of pedigree blanks, useful for dairymen, stock and poultry raisers. Large, very useful, at 5 cents each, 25 for 85c.

Why have a lot of things around you don't need when some might be glad to get them at a bargain? Try a Want Ad.

PHYSICIANS. Phone, Office 1551. H. H. HUGHES, M. D. Hours: 10-12 A. M. 2-4 and 7-8 P. M. Office—Withrow Building GRESHAM, OREGON

Office 2251 Residence 2253. GEO. INGLIS, M. D. Physician and Surgeon. Special Attention to Eye Diseases and Fitting of Glasses. Office over First State Bank GRESHAM, OREGON

A. W. BOTKIN, M. D. Physician and Surgeon. Rooms 15 and 16, Congdon Bldg. Hours 2 to 5 P. M. Office 1271 Phone Residence 127x Gresham, Oregon

H. V. ADIX, M. D. Physician and Surgeon. Office over Bank of Gresham. Office Phone 1431 or 149. Res. 1488. With Dr. W. J. Ott. Best phone for appointment.

Dr. Mary F. Becker. Chiropractor. ELECTRIC THERAPY. ELECTRIC SWEAT, MINERAL BATHS. Hours: 10 A. M. to 5 P. M. Library Block, Gresham. Phone 122x.

215-216 Mohawk Bldg. Third and Morrison Sts. Over Roberts Bros. Store. PORTLAND, ORE. DR. C. L. HAYNES. Eyesight Specialist. GLASSES. RESIDENCE ROCKWOOD

DENTISTS. Phone: Office 2184, Residence 2185. DR. W. J. OTT. Dentist. Nerve Blocking. Dental X-Ray. Office over Bank of Gresham

DR. JULIUS G. STURE. Dentist. Office in Bank of Gresham Building. In Sandy Wednesdays and Thursdays. Gresham 1231. Phone Sandy 69 and 63x

ATTORNEYS. Main 1249. Phone Gresham 1599. McGuirk & Schneider. Attorneys at Law. Gresham Office Withrow Bldg. PROBATE AND CORPORATION WORK. Portland Office, 501-7 Corbett Bldg.

W. J. COOPER. Attorney at Law. Office over Bank of Gresham. Office 1191. Phone Res. 2408

MUSICIANS. FRIEDA E. BRATZEL. Accredited Teacher of Piano. HAZEL THIEL. Teacher of Dunning System for Beginners. Studio opposite Public Library. Phone 1x. Res. Phone 791