

GRESHAM LOCALS

A number of Masonic friends from the county clerk's office were dinner guests at the J. A. Haley home on Monday evening and afterwards attended lodge in Gresham.

The Rev. A. S. Hisey, who is a member of the conference Epworth League board of control, attended a meeting of that body this afternoon and evening. It will be the duty of the board to lay plans, set dates and map out policies for the three institutes to be held in Oregon next summer, at Cottage Grove, Falls City and Suttle Lake.

C. A. Nutley of Seattle, inspector for the Northwestern Mutual Fire association, was a caller on old friends in Gresham yesterday. Mr. Nutley will be remembered as an aggressive and popular pastor of the Bethel Baptist church 20 years ago. He has a Portland office in the Board of Trade building.

The Sew and So circle of the Methodist Ladies Aid will meet at the home of Mrs. B. L. Walrad next Wednesday afternoon, January 16. All members are urged to be present.

An event in Portland next Sunday of much interest to music lovers will be the twelfth annual rendition of "The Messiah" at the public auditorium at 3 o'clock in the afternoon by 60 voices of the Portland Oratorio society under the direction of Joseph A. Finley. Some of the best known soloists of Portland will take the leading parts. Guy D. Jones of Gresham will sing the tenor arias. Five accompanists will be used, among them Miss Ruth Heinrich on the piano and Wm. R. Boone on the pipe organ for the choruses. Leslie Walrad of Gresham will take part in the singing.

Word comes from Oregon Agricultural College that Melvin Brugger of Gresham, junior in agriculture, is circulation manager of the Oregon Countryman, the magazine published

January Specials

Men's Wool Sport Coats

Brown Heather, Reduced from \$3.95 to **\$3.25**

The Royal Knit Sport Coat is a heavy brown heather, has four pockets, sizes 40 to 46, reduced from \$5.75 to **\$4.75**



Men's Heavy NEW Army Breeches

All wool, reduced from \$4.25 to **\$3.75**
Men's Heavy Wool Mixed Shirts at **\$2.25**
Men's Heavy All-Wool dark plaid Shirts **\$4.75**

Fishermen and Hunters—Get a pair of our guaranteed red rubber Sport Boots, none better. Reduced from \$7.25 to \$6.25

Odd Lots of Ladies' Wool, Silk and Wool hose to close out at 25 per cent off regular price
Ladies' Winter Weight Cotton Union Suits, low neck, knee lengths, reduced from \$1.00 to **85¢**

OUTING FLANNELS

27-in. Light and Dark Colors, good grade, now **22¢**
36-in. Outing Heavy weight, reduced to **24¢**
27-in. White Outing Flannel reduced to **18¢**

UMBRELLAS

A Real Bargain in Women's Umbrellas, have beautiful handles, a splendid quality of pure silk, assorted colors, Reduced from \$8.95 to **\$6.95**

WALRAD MERCANTILE CO.

"The House of Quality" Gresham Phone 1411

SPECIAL OFFERINGS OF THE 20th Century Grocery

For four days, beginning Sat., Jan. 12 and lasting until Wed. night, Jan. 16

CANNED GOODS

- HILSDALE ASPARAGUS TIPS, tall cans, each 29c, 6 cans **\$1.69**
- MISSION PIMENTOS, halves, each 12c, 3 for **35c**
- SLICED PINEAPPLE No. 1 tall cans, each 20c, 6 for **\$1.15**
- MISSION APRICOTS, light syrup, large No. 2 1/2 cans, each 20c, 6 for **\$1.15**
- DEL MONTE CATSUP, pints, glass, each **22c**
- LILY OF THE VALLEY Early June Peas, No. 2 cans, each 22 1/2c, 6 cans for **\$1.25**
- LILY OF THE VALLEY, cut Refuge Beans, No. 1 tins **15c**
- DEL MONTE COUNTRY Gentleman Corn **17 1/2c** each, 6 for **\$1.00**
- HEINZ MEDIUM PORK and BEANS, each 13c, 6 for **75c**

OTHER SPECIALS

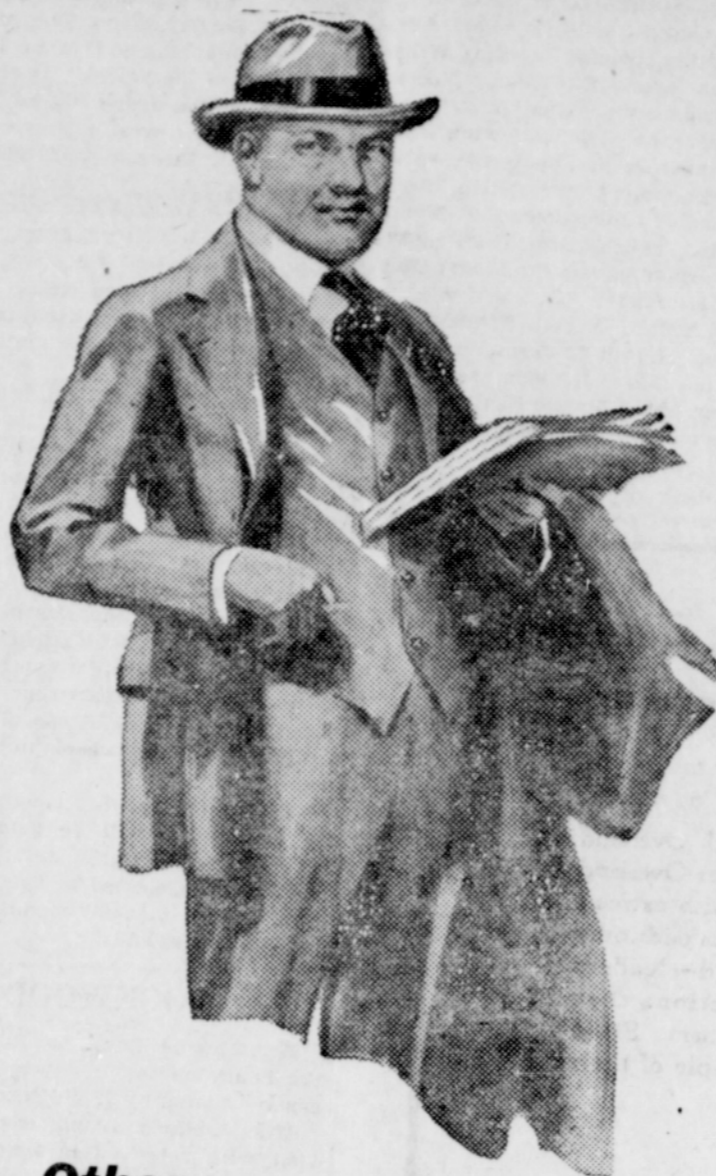
- COMB HONEY, section **25c**
- SEEDLESS RAISINS, large pkg. 11c, 5 for 50c
- Red Bird Matches, large packages, 5 for **25c**
- LAYER FIGS, excellently healthy food, lb. **15c**
- ROYAL BAKING POWDER, 12-oz. can **40c**
- BON AMI CAKE **10c**
- BULK SHORTENING, very finest quality, pound **17 1/2c**
- BACON BACKS, streak of fat and streak of lean, by the half or whole piece pound **23c**
- SIDE BACON, half or whole piece, 8 to 10 pound size, pound **25c**
- SPEARMINT GUM package **4c**
- LIFE SAVERS each **4c**
- PEPPER, 2-oz. cans each **5c**

FLOUR—Kerr's, Crown, Olympic and White Mountain, 49 pound sack \$1.59.

ROYAL WHITE SOAP 6 bars 25c, 10 bars **39c** LARGE PRUNES pound **10c** PURE HONEY, pint jar each **29c**

20th Century Coffee—The pride of our organization, pound 35c 3 pounds **\$1.00** "Roasted today, on your table tomorrow"

Really no use in looking for a better place, and so conveniently located.



Men—

Here's a Suit Sale, the equal of which you will not find elsewhere. We are reducing our stock to the minimum before spring goods arrive. Hart, Schaffner & Marx, Kuppenheimer and other good makes at amazing reductions during our Annual January Sale.

--BUY NOW--

\$35 and \$30 Suits \$24
\$45 and \$40 Suits \$29

Models, Patterns and Sizes for Men and Young Men

OVERCOATS REDUCED IN PRICE

Aylsworth & Martin
MEN'S WEAR SHOES
GRESHAM

Other MONEY SAVERS

Boys' 2-Pant Suits **\$7.95**
\$4 and \$5 Mens Hats **2.85**
\$2.50 Caps **1.75**
\$1.75 Underwear **1.45**

\$6.50 Ladies' Shoes, vici and calf skin, medium heel **\$3.95**

\$7.50 Ladies' Shoes, high heels **\$2.50**

\$5 Pumps, odd lots **\$1.00**

Our January Clearance Sale Now in Full Force

Prices have been slashed to "Clean House" effectively. To those who are not acquainted with our clearance Sales, we say knowingly, that you will miss the biggest bargains of the entire year if you fail to take advantage of the extraordinary economies offered in this store.

Just Received, One Solid Case Wolverine 2-in-1 Blankets
Size 66x84, weight of two blankets woven in one, in pretty Indian designs. Placed on this Clearance Sale at, each **\$5.89**

Bargains Prevail throughout the entire store. Everything is Reduced for this Clearance Sale.

L. A. WACK & CO.

Phone 2221 Gresham, Oregon

The Dorcas circle of the Methodist Ladies' Aid will meet at the home of Mrs. Mary McAllister on Wednesday afternoon, January 16, at 2:30. On the same afternoon the S. E. circle will meet with Mrs. Benj. Cameron.

The regular meeting of Gresham grange will be held next Saturday, January 12. Initiatory work will be put on the morning session. Following the dinner at noon the lecture hour will be turned into a social affair and an old fashioned candy pull will be enjoyed.

Mr. and Mrs. Frank Eder and Mr. Frank Townsend from McMinnville spent the week-end at the home of Mr. and Mrs. P. B. Eder.

The undenominational services are being well attended each Sunday afternoon. Also the mid-week prayer meetings on Tuesday evening. Everyone is cordially invited to attend the services next Sunday afternoon, beginning at 2 o'clock. Rev. S. F. Pitts will preach. Sacrament will be served.

Ross Cooper, son of Mr. and Mrs. W. J. Cooper, arrived last week from Milwaukee, Wisconsin, where he has been attending dental college and will be at home here with his parents. He expects later to resume his studies at the Pacific Dental college.



BETHEL BAPTIST
"The Glad Hand Church"

Bible School 10 a. m., Sermon at 11 a. m. and 7:30 p. m. Lord's Supper the first Sunday of the month. Bible Study and Praise Service Wednesday, 7:30 p. m. "Our Liberator," Thursday, 7:30 p. m. "Universal Brotherhood is the Goal" "Come thou with us and we will do thee good." PROF. G. R. SCHLAUCH, Pastor.

82% Die Penniless

Insurance men tell us that 82% of all men die PENNILESS! This means that but 18% of us are financial successes. The reason for this TERRIBLE average is simply because most men do not SAVE. To which Class do you belong? We cannot both SPEND and HAVE. It is really not hard to be a success. Work faithfully and save SOMETHING consistently. Keep those savings in a safe place and let them alone where they can work day and night at compound interest. Start your savings account here today.

If a young man of 20 would save \$12 a year, at the age of 65 he would have \$1510.44 (4% compounded).

First State Bank

GRESHAM, OREGON

A STRONG BANK