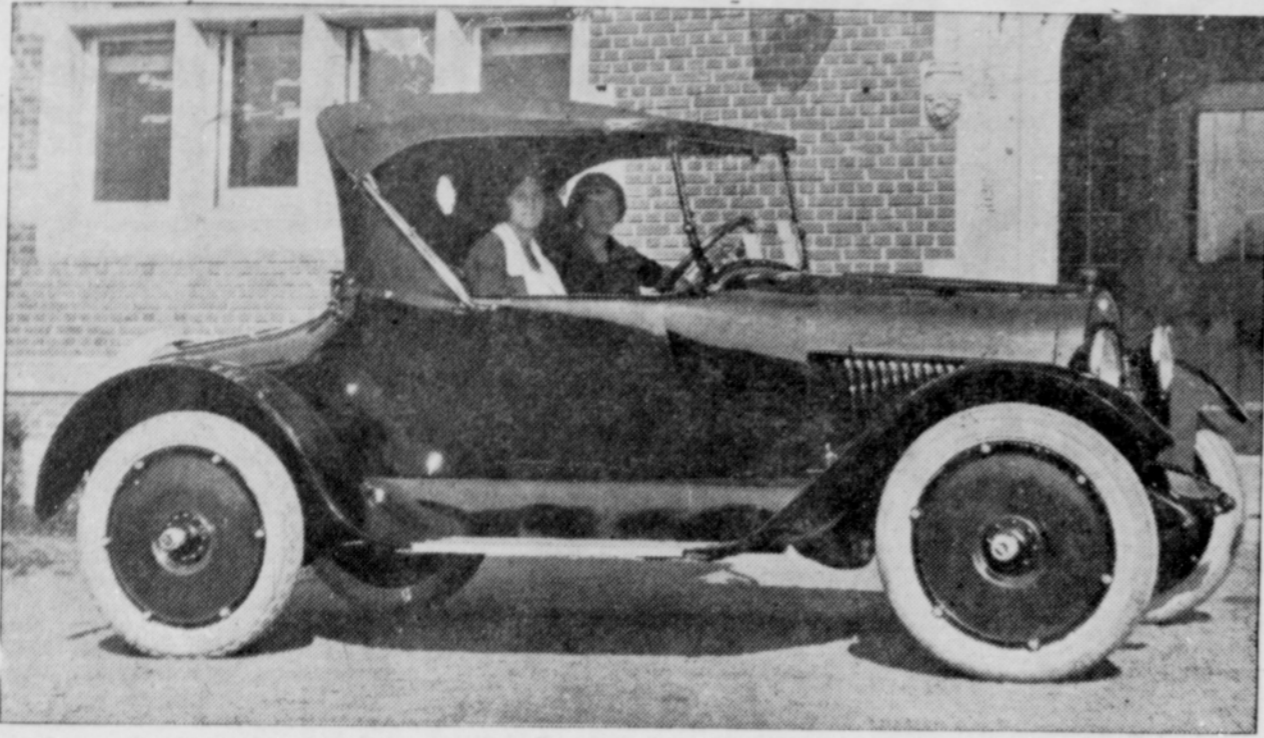


SMITH MOTOR CAR CO. HANDLES VERY POPULAR LINE OF CARS



The F. B. (Baby Grand) Chevrolet roadster shown above, is the last word in stream line body design. The high hood is carried back in regular curves, ending in a beautifully moulded one-piece back. There is a copious luggage space in the back and a small parcel compartment just back of the seat that can be reached from within the car. The 1922 cars are finished in black baked enamel, the most durable finish known. The motor is a long stroke four, with valve-in-head feature, heated intake manifold and unit power plant developing 42-horse power. This car has won many hill climbing contests, and with the long stroke motor idles down smoothly to four miles per hour on high gear.

PHILADELPHIA FIRM CUTS MOTORING COST

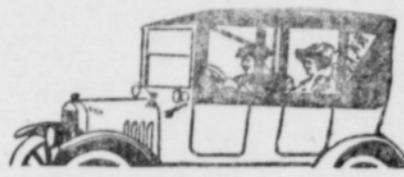
"Prices below the level of 1914 would seem incredible," said Mr. C. E. Osburn. "Yet in some manner the manufacturers of the Philadelphia Diamond Grid Batteries have accomplished it."

The battery being discussed can be used on nine out of ten cars. There is no similar battery of equal efficiency nor any other that has been so openly guaranteed to give one year's continuous service as these special type Ford, Buick and Dodge Batteries. And because Philadelphia Diamond Grid Batteries have the habit of outliving the cars themselves is one reason my shop is popular. Of course, a lot of the men who buy these special type batteries don't understand that they contain patented quarter sawed hard wood separators. If they did know that, and knew what it meant, they would know why the makers could afford to give such a sweeping guarantee.

One thing that is sweeping this country is vacuum cleaners.

Politicians seem to think that to turn about is fair play.

Want ads. add to your profit.



Chevrolet Auto Tops Coming.

The Smith Motor Car Company, Chevrolet dealers, will soon receive a shipment of the Close-Tite auto tops for Chevrolets and Fords. These tops have just recently been placed upon the market in the West, and represent the cheapest and lightest sedan tops yet produced. These tops are very novel in design and though sold at a very low price, are fully as tight and comfortable as a regular sedan or coupe. Unlike other separate tops this one is used as a part of the regular touring top, thus adding but less than forty pounds to the weight of the car. The doors are made of spring steel, fabric and large windows of Pyraline unbreakable glass which operate vertically. These tops can be installed on Ford touring cars, Ford roadsters and the Chevrolet touring car at a very reasonable price.

Safety first pays well. The inventor of safety pins made \$2,000,000.

DODGE CAR MADE FINE RECORD DURING WAR

The most popular medium priced car sold in this territory is the Dodge, handled by Southard and Southard, of the Gresham Garage. The car of today, while improved in many parts, in design and appearance has changed only a little from the earlier Dodges. The Dodge Company follows much the same plan as some of the highest priced automobile companies, and makes only a slight change in body design from year to year. Thus the Dodge owner who has a 1917 model, with a little paint and polish can make his car look as good as a 1922 model.

The Dodge saw hard and active service in the army, both here and abroad, during the war. Of all the cars a chauffeur had to pick from, when he had to go through a road where to stop meant instant death, and there was also that lurking possibility even while traveling, the Dodge was the dependable car he would choose.

Dodge can be bought in touring, roadster, sedan and coupe body styles and in a screen side for light delivery and hauling.

Phone want ads. to 1561.



The 1922 Chevrolet

Embodies more than 20 Improvements, which, appraised conservatively, add from \$75.00 to \$100.00 of extra value to the car.

Among these changes are:

New rear end throughout with spiral-bevel gears and new departure ball bearings. Equally as strong and quiet as in any car of any price.

Hand emergency brake.

Timkin roller bearings in front wheels.

New noiseless tappets adjustable on rocker arms.

Improved carburetor.

Willard threaded rubber battery.

Seats lowered 4 inches to provide high comfortable backs.

New speedster top with gypsy curtains.

Steel fellows on wheels to prevent spokes loosening.

New method of clutch assembly.

Larger king bolts to reduce wear.

Spring hood clamps and no-glare head lights.

Since this new model came out more Chevrolets have been sold than during the same period in any previous year.

The new Chevrolet is a completely equipped car, very attractive in appearance and is the cheapest car on the market to operate without exception.

We cordially invite you to call at our sales room and inspect this new model Chevrolet. It would surely make a most desirable and practical Xmas present.

"Close-Tite" Sedan Tops for Fords and Chevrolets

We will soon receive a shipment of Close-Tite Tops for converting Ford and Chevrolet open cars to sedans and coupes. For a very moderate charge your open car can be converted to a comfortable warm closed car that will shut out all the rain and cold, and can be changed instantly to an open car. The CLOSE-TITE is the cleverest sedan top yet produced, and what is more important, is sold so reasonably that any Ford or Chevrolet owner cannot afford to deprive himself of the comforts of the closed car.

Phone or call on us to drive to your place and show you this new sedan

PRICES OF CLOSE-TITE TOP INSTALLED ON YOUR CAR.

Ford Touring Car.....	\$65.00
Ford Roadster	48.00
Chevrolet Touring Car.....	75.00

Smith Motor Car Co.

GRESHAM, OREGON



Willard STORAGE BATTERY

IT LASTS!

Don't go out and buy a battery by guess-work! Rather, fix your mind firmly on this-KEY-FACT and let nothing swerve you from it.

When you find the battery with the longest-lasting INSULATION you have found the longest-lasting BATTERY.

For the insulation between the plates is generally the weak point! The action of the acid—the jouncing and bouncing of

the car—even time itself—all tend to destroy ordinary separators.

Willard Threaded Rubber Insulation is durable. It lasts the life of the plates. It saves re-insulation trouble and expense.

The builders of 185 makes of cars and trucks pay an additional price for Willard Threaded Rubber Insulation to assure to the users of their product the lowest battery cost per mile of uninterrupted service.

GRESHAM STORAGE BATTERY CO.

S. S. PUGH, Manager

Latourell Building

GRESHAM

Phone 2331

